

the Lighthouse

Events | Benevolence | Industry News

Winter 2016


*Merry
Christmas
2016*

from The Lighthouse Club



明建會

The Lighthouse Club Asia Pacific Region

Australia | Cambodia | Hong Kong | Macau | Malaysia | Philippines | Singapore | Thailand | Vietnam



Aliis Cum Humanitate

Season's Greetings

Tier 1: Hong Kong Construction
(APAC Legal 500 2017)

First tier: Hong Kong Front End
Construction Law Firms
(Doyles 2016)

First tier: Hong Kong Construction
Litigation Law Firms
(Doyles 2016)

Clyde & Co has '**one of the
best construction practices
in the region**'
(APAC Legal 500 2016)



Ian Cocking
Partner, Hong Kong
T: +852 2287 2802
E: ian.cocking@clydeco.com



Gilbert Kwok
Partner, Hong Kong
T: +852 2287 2804
E: gilbert.kwok@clydeco.com

35 years
年 in Hong Kong
香港

www.clydeco.com



Season's Greetings

Continental Engineering Corporation operates in Taiwan, Hong Kong, Macau, India and Malaysia, constructing high-speed rails, tunnels, viaducts, highways, specialist buildings and other infrastructure projects.

**For more information, please visit www.continental-engineering.com
or contact CEC Hong Kong Branch
TEL: (852)29601398 FAX: (852)29601399**

商界展關懷
caringcompany^{2015/16}
Awarded by The Hong Kong Council of Social Service
香港社會服務聯會頒發

**大陸工程公司**
CONTINENTAL
ENGINEERING CORP
A MEMBER OF CONTINENTAL HOLDINGS

Chairman's Message

Dear Members,

The festive season is almost upon us and I am sure that across our branches thoughts are turning to family, friends and the giving spirit that this time of year engenders.

Those very thoughts also highlight and provide a focus on the core values of the Lighthouse Club, good fellowship with our colleagues across the industry and the charitable works which the Club undertakes in so many areas.

The good fellowship is something we take for granted in LHC and it is deeply apparent in all of the branches I have visited and social occasions in which I have participated over the past two years.

In what can often be a very confrontational working environment the Lighthouse Club provides a "safe haven" where colleagues across the industry can relax and enjoy each other's company in a convivial and open atmosphere.

I am sure that our founders would be very pleased at the bonhomie of the many gatherings which take place every month across APR.

Quite rightly, the second value of charitable works is even more in focus at this time of year. The Club provides vital support and assistance to the needy in our industry throughout the year and this has been the highlight of previous Chairman's messages.

Every branch contributes to this in its own way and the range of support we provide is impressive indeed. In the spirit of the season, I both applaud the work you all are doing in this regard and encourage a renewed effort through the Christmas period and the coming year.

Finally, I wish all of you a very Merry Christmas and a Happy and Prosperous New Year.

Bob Park
Chairman
The Lighthouse Club,
Asia Pacific Region



About The Lighthouse Club

The Lighthouse is the magazine of the Lighthouse Club Asia Pacific Region, which was established in 1998. The Lighthouse Club was originally established in England in 1956 and first came to Asia in 1986 with the formation of a Branch in Hong Kong. The Lighthouse Clubs that were in existence in 1998 in Asia agreed to the formation of the Lighthouse Club Asia Pacific Region.

The aims of the Lighthouse Club worldwide are to promote good fellowship amongst its members who work in or are associated with the construction industry and to provide charitable assistance to those in need within the construction industry and to their dependents in qualifying cases.

In addition to the charitable works of the individual branches of the Lighthouse Club, the Lighthouse Club Asia Pacific Region has two related Hong Kong based charities which provide charitable assistance throughout the Asia Pacific region:

- The James Battersby Lighthouse Club Educational Trust which provides assistance for education and training to qualifying young persons.
- The Lighthouse Club Asia Pacific Region Benevolent Trust which provides assistance to relieving poverty and financial need to persons currently or previously employed in the building and civil engineering industries and allied trades.

For more information and membership / sponsorship enquiries please contact the Membership Secretary or Deputy Chairman of the Lighthouse Club Asia Pacific Region at lighthousehk@gmail.com. To advertise in this magazine please contact publisher@rofmedia.com or lighthousehk@gmail.com

Official website : www.lighthouseclub.asia
The Lighthouse is online at www.issuu.com/rofmedia



In This Issue



16

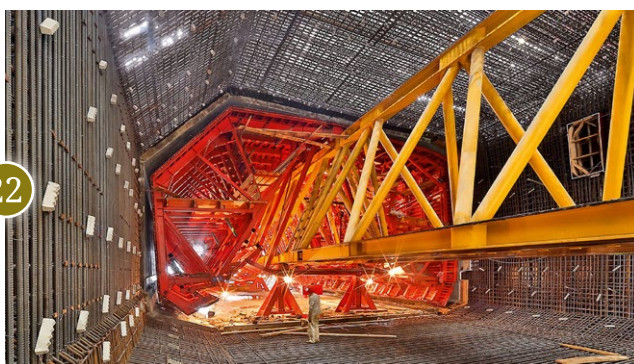
High performance art

Hip Hing Construction is helping create an iconic building

PERI

Your reliable partner for upcoming challenges

22



Benevolence

- 8 Lighthouse Club Asia Pacific Region Treasurer's Report
- 10 Second annual Lap Dog Challenge raises over HK 1 million
- 12 Beneficiaries of the Educational Trust share their appreciation

Features

- 16 Hip Hing's Patrick Kwan discusses progress at iconic Xiqu Centre
- 22 Scaffolding, formwork and peace of mind from PERI Hong Kong

Regional Branch Updates

- 26 Hong Kong
- 34 Macau
- 36 Singapore
- 38 Kuala Lumpur
- 42 Australia
- 44 Manila

Sponsors

- 52 Lighthouse Club Asia Pacific Region Sponsors 2016

THE LIGHTHOUSE Winter 2016

The Lighthouse Club Asia Pacific Region
Suite 1901-2, Hopewell Centre,
183 Queens Road East, Wanchai, Hong Kong

Tel : +852 2736 9885
Fax : +852 2687 2252
lighthousehkg@gmail.com

Administrator : Elaine Man

Editorial Committee :
Mike Atkin / Vincent Connor / Steve Tennant
John Battersby / Mike Staley / Elaine Man

Publisher : Mike Staley
E : publisher@rofmedia.com
T : +852 3150 8988

Advertising : Bryan Chan
E : bryan@rofmedia.com
T : +852 3150 8912

Designer : Parnell Chan

Published by ROF Media

APR Executive Committee

Chairman
Bob Park
bobpark@rmparkconsulting.com

Immediate Past Chairman
Keith Buckley
keith.buckley@cotai.venetian.com.mo

Chairman Elect
Rod Noble
roderick.noble@39essex.com

Deputy Chairman
John Battersby
johnbattersby@bkasiapacific.com

Secretary
Steve Tennant
stevetennanthongkong@gmail.com

Treasurer
Phil Clarke
phil.clarke@cotai.venetian.com.mo

Membership Secretary
Jim Chessell
jchessell@bkasiapacific.com

Bangkok
Gareth Hughes
gareth.hughes@rsmthailand.com

Ho Chi Minh City
Colin Johnston
cjohnston@bkasiapacific.com

Hong Kong
John Battersby
johnbattersby@bkasiapacific.com
Steve Tennant
stevetennanthongkong@gmail.com
Bob Park
bobpark@rmparkconsulting.com

Kuala Lumpur
Bert de Munck
bert.demunck@plus3.com.my

Macau
Keith Buckley
keith.buckley@cotai.venetian.com.mo

Manila
Guenter Taus
guenter.taus@jec.com

Phnom Penh
Euan Ritchie
ritchie@artisansurfacefinishes.com

Singapore
George Wall
gwall@asgardprojectsolutions.com
Jim Chessell
jchessell@bkasiapacific.com

Australia
Paul Roberts
Paul.Roberts@aquenta.com.au
Nick Longley
nick.longley@hfw.com

THERE'S ONLY ONE SOLUTION

MERRY CHRISTMAS



www.insite.com.hk

The leading light in dispute resolution.



Contract Dispute Consultants has built an impressive track record in resolving complex construction disputes.

Call us on **852 2470 6033** to see how we can help you.

Unit 1405, Bonham Trade Centre, 50 Bonham Strand, Sheung Wan, Hong Kong
t (852) 2470 6033 f (852) 2470 6133 e info@contractdispute.com.hk



www.contractdispute.com.hk

Season's Greetings

and best wishes for the New Year from all the partners and staff at Pinsent Masons.

Hong Kong

Vincent



Dean



Nicholas



Peter



Singapore

Mohan



Jon



Chen Han



Nicholas



China

Hew



Michelle



Sam



Helena



Australia

Andrew



Peter



Michael



Greg



Pinsent Masons

The Lighthouse Club Hong Kong - Treasurer's Report

The Lighthouse Club's 30th Anniversary events raise HK\$1.08 million for its charities

The Lighthouse Club's 30th Anniversary events have generated a surplus of HK\$1,082,740 which has been donated to the Club's three charities.

Members will have read in previous editions of The Lighthouse about a variety of hugely successful events held in late May to celebrate the 30th Anniversary of The Lighthouse Club in Asia. Through the very generous support provided by our sponsors and the patrons who attended the International Construction Conference, the Construction Technology Expo, the Lighthouse Club International Cocktail Reception and the 30th Anniversary Lighthouse Club Ball, the 30th Anniversary events generated a surplus of HK\$795,000. The surplus has been distributed equally between the Lighthouse Club Hong Kong Benevolent Fund, the James Battersby Lighthouse Club Educational Trust and the Lighthouse Club Asia Pacific Region Benevolent Trust, with each receiving HK\$265,000.

A further HK\$287,740 was raised for the charities at the 30th Anniversary Gala Ball. A sum of HK\$79,905 was realised through games and the sale of raffle tickets and the auction generated HK\$207,835. The funds raised at the 30th Anniversary Ball will be distributed to the charities as follows:

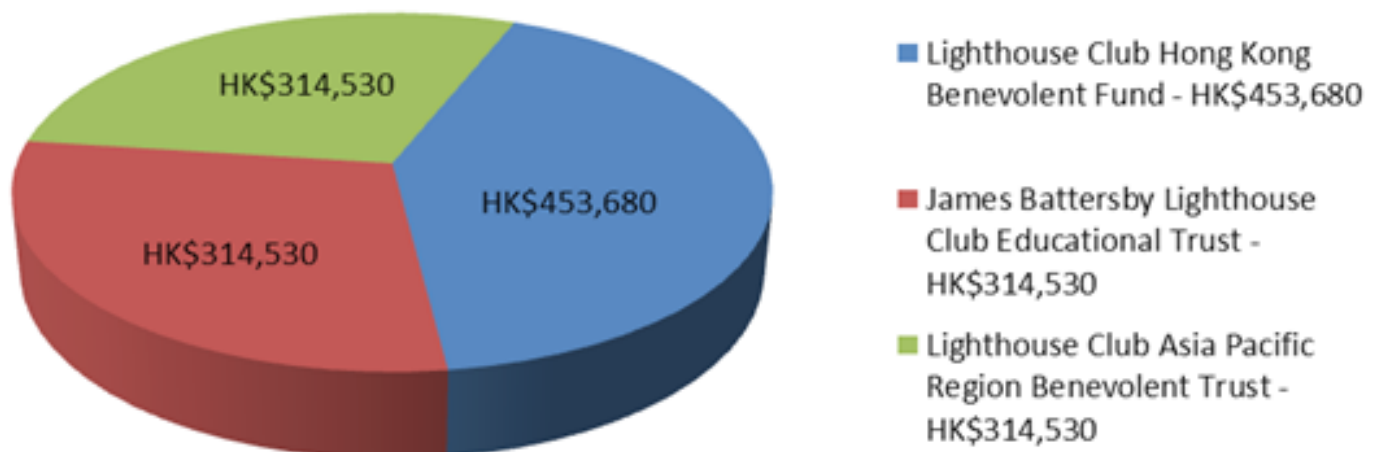
- the Lighthouse Club Hong Kong Benevolent Fund – HK\$188,680, and
- the James Battersby Lighthouse Club Educational Trust and the Lighthouse Club Asia Pacific Region Benevolent Trust – HK\$49,530 each.

Whereas, generally the funds have been split equally between the three charities, the greater share of the funds raised through the auction at the 30th Anniversary Ball has been distributed to the Lighthouse Club Hong Kong Benevolent Fund. This is because Mission Possible, who have been a great supporter of the Lighthouse Club Hong Kong and very generously donated 11 of the auction items, specifically asked that the funds generated by the items they donated go to the Hong Kong charity.

The 30th Anniversary of the Lighthouse Club in Asia has been very successful from a fundraising perspective and will enable much needed financial support to continue to be provided to those, and the families of those, in need. The Committees of the Lighthouse Club Hong Kong Branch and the Asia Pacific Region, the Trustees of the Lighthouse Club's three charities and, most particularly, the beneficiaries of the money paid out to deserving cases by the charities, wishes thank all of the sponsors and the patrons of the 30th Anniversary events for their support of the charitable activities of the Lighthouse Club in Hong Kong and Asia Pacific.

If you have any queries regarding the financial affairs of the Club please feel free to contact the Treasurer via lighthousehk@gmail.com

Allocation of the 30th Anniversary surplus of HK\$1,082,740 to the charities



The Lighthouse Club's charities provide financial assistance to construction workers who for reasons of illness or accident cannot work, or in the event of a construction worker's death provide assistance to the deceased's family. These payments usually take the form of a lump sum payment or a monthly pension.

Through the three stories below, we have illustrated some of the cases and financial support which has been provided by the charities in 2016.

Help for this whole family

A monthly pension of HK\$5,100 and a monthly educational allowance of HK\$850 are being provided to the widow of a Hong Kong construction worker who passed away while working in China. The monthly pension and education allowance is helping the widow to look after her pre-school age daughter and her 80 year old mother in law.

The construction worker suffered serious burns and ultimately passed away in hospital, after a gas water heater exploded when he was taking a shower in the dormitory accommodation provided by his employer while working in China.

Providing assistance and care

A monthly pension of HK\$5,100 and a monthly educational allowance of HK\$850 are being provided to the wife of a scaffolder who fell from height at a construction site in 2015 and later passed away in hospital.

The scaffolder was the family's breadwinner. His wife does not work as she needs to stay home to take care of their son who suffers from autism, which also requires him to take medicine regularly.

Keeping the family together

A one off donation of over HK\$17,000 has been provided to fund the purchase of a specialist bed to enable a quadriplegic former construction worker to move back to his home, thus allowing him to live with his family once again.

The worker fell from height at a construction site in 2012. After several years of treatment and rehabilitation he had recovered to the extent that, subject to him having a special bed, he could move from the rehabilitation centre back to his home and live with his family. As the worker's family could not afford the specialist bed that he required, the Lighthouse Club funded the purchase of the bed.

If having read these stories any member is aware of a similar case which may qualify for assistance from one of the charities in Hong Kong or the Asia Pacific Region, please refer it to your Branch Committee so that it can be put forward for consideration by the Benevolent Sub-Committee and the Trustees.



Sponsored by VSL Intrafor Hong Kong, "Summer Fun Day" aimed to provide a support network for families of construction workers and their dependents suffering hardships resulting from injuries or illnesses or fatality.

Lap Dog Challenge – On track to fill the Lighthouse coffers!



This time last year, Mark Van Beers of WT Partnership had an outlandish idea of a bunch of fit people running around an athletics track a colossal number of times to raise money for a charity. In April this year, Mark kicked off the “Lapdog Challenge” with all proceeds to go to the Lighthouse Club and from just a few emails to some of Mark’s buddies across the street, four firms threw their immediate support behind the initiative:

WTP Dragages ISG/Commtech Gammon Leighton

Each company was tasked with “appointing” 5 runners who would simply run around the 400m track at Stanley Ho Sports Ground an inordinate number of times and their companies would gather sponsorship accordingly.

A huge thanks to some people who have been on the case since day 1 and without each of them the event simply wouldn’t have happened:

Dragages – Alan Donnet and Melissa Kung. Some large sponsors and all the great runners supplies on the event day. Plus the only female runner!

Gammon – Nigel White, Kevin O’Brien, Steve Jenkins and Candy Chan. Loads of sponsors and for providing the singlets which were perfect.

ISG / Commtech – Tim Threlkeld, Andy Knellar and Emily Yip. Found and booked the track plus that magnificent private grandstand and again many sponsors.

Leighton Asia – Yvonne Lo, Sylvia Chung, Joe Yiu, Tina Lai, Craig McGrory, Karl Speed and Dean Cowley for their support.

The response was incredible and the pledges were overwhelming. Key sponsors were K.Wah and Henderson Land who pledged \$90,000 between them.

The event gained huge momentum when Ir Dr. Derrick Pang personally pledged to match \$ for \$ any money raised by the Lapdogs!

So on Sat 5th Nov, 25 runners including Ameline from Dragages, our only female contender, hit the track a little after 7am and basically didn’t stop running for 5 hours!! Their commitment was humbling with runners asking, once they’d completed their committed number of laps, if they could run more laps to raise more money!!

When the last runner finally stopped just before 12pm, a whopping 1846 laps were consumed! Most of the runners thought it was going to be easy but quickly realized running lap after lap after lap after lap is a very difficult task! There was lots of chit chat and laughter amongst the runners for the first hour or so but it suddenly became quiet after that!

A great effort by the boys from Leighton to win the Company Trophy for most laps and a brilliant solo effort by Alex Tang who ran 49km on the day!

Company	Laps	Top 5 Individuals	Company	Laps
Leighton	486	Alex Tang	Leighton	122
Dragages	417	Martin Williams	Leighton	103
ISG / Commtech	368	Franck Gauthier	Dragages	101
Gammon	301	Simon Bowen	Leighton	100
WTP	274	Dennis Chu	Dragages	91
Total	1846			

Oh, what was raised? Well, in total from all the generous sponsors including the amazing matching scheme, an incredible, whopping **HK\$1.14M**.

The Lighthouse Club HK humbly thanks Mark Van Beers for his time, relentless effort and commitment to actually make this happen! Hats off to you Mark!

We’re already talking about Lap Dog Challenge 2017. If you would like to submit a team, please contact Lighthouse Club Hong Kong.



2016 Lighthouse Club Lap Dog Challenge

Thank you for your support in raising a total of HK\$1,148,888 for the Lighthouse Club Benevolent Fund.

Participating companies:



Special acknowledgment:

Ir Dr. Derrick Pang, President of the Lighthouse Club

Premium sponsors:



恒基兆業地產集團
HENDERSON LAND GROUP



Sponsors:

(In alphabetical order)

3C Synergy
Advance Concrete Drill Cut Co. Ltd.
Advisian
Ah D Transportation
Allied States
ATAL
Atelier Pacific
Bachy Soletanche
BBEM
Buddy Engineering Ltd.
BYME
Chesco Engineering Ltd.
Chi Tung Ironware Welding Engineering
Chicardo Investment Ltd.
Chiu Ming
Chung Shun Construction Ltd.
Commanding View
Crawford
Dextra Pacific Ltd.
Dragages HK staff
Engineering Surveys Ltd.
Enviro-Tech
Far East Metal & Hardware
Ferrier Chan & Partners
FEWA

Freyssinet
Full Win Marble & Granite Co., Ltd.
Fully Engineering
G4S Security Systems (HK) Ltd.
G-Cladds Ltd.
Good Mind Engineering Ltd.
Haley & Co
Hong Kong Nihon Cement
INKA Ltd.
JEB
Keep Born Ltd.
Keystone Electric Wire & Cable
Kinform Timber Co. Ltd.
Kobelco
Kwun Tung Machinery Engineering Ltd.
Lik Hung Crane Hire
Luen Fat Scaffolding Eng Ltd.
Luen Yick Tai
Mice Engineering
Ming Shing Materials
Minter Ellison
Modern Concrete
Mr. Barry Sin
Mr. Boyd Merrett
Mr. Dean Cowley

Mr. John Moss
Mr. Ka Lun Ip
Mr. Karl Speed
Mr. Matthew Deayton
Mr. Paul Hart
Nam Tai Security
Newtech Technology
Norton Rose Fulbright
NSS Far East Ltd.
P&A Engineering Ltd.
Pacific Marble
Pat Davie Ltd.
Peaceman Cable
Pinsent Masons
Proficiency Cranes
ProjexAsia
QBE
Right Lead Construction
RMD Kwikform Hong Kong Ltd.
Roxas (Asia) Engineering Ltd.
Sanfield Industries Ltd.
Shui Wing Engineering
Shun Cheong Trade and Development Co., Ltd.

Skyhill
Southa Technical Ltd.
Suman Engineering Ltd.
Sunflower
Supermoon Ltd.
Swire Properties
Tapbo Civil Engineering Co., Ltd.
Tammex Engineering Ltd.
Tin Wo Engineering
Tong Kee
Trigon Building Materials
Tung Shun Transportation
United Engineering
VSC
Wai Hing Iron Works Ltd.
Welltune Transportation
Wide Grand
Willis Towers Watson
Wing Kei
WT Chan & Associates
WT Partnership HK staff
Yat Lam Transportation Co.
Yat Tong Eng Co., Ltd.
Yau Kee Construction

Educational Trust Beneficiaries

During a recent trip to the Philippines to attend a Lighthouse Club Asia Pacific Region Committee Meeting, the Lighthouse Club Manila's 20th Anniversary "Roaring Twenties" Gala Ball and a couple of days in the BK Philippines Inc office, John Battersby, Adam Nelson and Janey Rogers had the pleasure of meeting one of the beneficiaries of the Lighthouse Club's James Battersby Educational Trust Fund. In fact, it was the second time Janey had met Beverly as they had both attended one of the Lighthouse Club Manila's monthly gatherings where Beverly gave a very heartfelt "thank you" speech to the assembled members. Delightful it was, then, to be reintroduced to her in our office by the General Manager, Maria Cecilia de Castro (Ces) as one of her newest employees.

Here is her (slightly edited!) story:

I am Beverly Singson Samson, one of the beneficiaries of the Lighthouse Club Manila. I'm a graduate of the Western Mindanao State University in the south of the Philippines. My family home is on Basilan. My college life, however, was spent in Zamboanga City which is the 2nd largest city in Mindanao. There is a lot of beautiful scenery in Mindanao.

I first met Ma'am Ces in Zamboanga City when she was on a mission to find students for the Lighthouse Club scholarship. I told her of my circumstances, that my Mum was a housewife and my Dad worked at the Lamitan Dock (Lamitan being my home town on Basilan). Ces was on her way back to Manila that day but spent time talking to me and finding out more about me. She also gave me some good advice about overcoming life's difficulties. When I was told I would be able to go and study Engineering at University I was overwhelmed.

I graduated with a Bachelor of Science in Electrical Engineering in March of this year, gained my Electrical Engineer's License in September and started working at BK Philippines Inc on the 2nd November.

I want to succeed like Ma'am Ces; I want her to be proud of me and not to regret that she gave me a chance to change my life. She gave me the opportunity to do my practicum at BK Philippines Inc and let me stay at her house whilst completing the on-the-job training.

When I attended the Lighthouse Club get-together I met with Ma'am Me-anne and other Lighthouse Club members. It was a great evening. When I spoke about my gratitude to the Club I could feel how much they cared and how important the whole concept of the Lighthouse Club was to them.

I could not have achieved what I have today without the support of the Lighthouse Club and I am very glad that they came into my life. Their effort and support are very precious to me. Thank you, thank you very much. I wish you all the best and Godspeed.



From left to right: Maria Cecilia de Castro (Ces), Beverly Singson Samson and John Battersby



Words of Appreciation

To begin, I would like to thank The Lighthouse Club Kuala Lumpur for everything they have provided me, including the sponsorship for my university's tuition fees and this opportunity to be published in the magazine.

I am Belle, a 1st year student currently studying Bachelor of Science (hons) Architecture in University Tunku Abdul Rahman (UTAR).

Architecture was indeed a tough course, and I suffered during my first and second semesters. It has never been easy, but a choice I am glad to make. I would say this whole year has been a very challenging yet exciting year for me. I begin the year with something I had no basic knowledge in, ending it with the growing interest to learn more. There is no ending for learning, for which I will never have enough knowledge in this wonderful course. To be honest, Architecture has been expanding my thoughts, growing my urge to learn more and more.

Not just architecture, I've spice up my university life with all sorts of talks and events, clubs and societies. Especially by being the committee of a club or an event, I got to know a lot of amazing people sharing the same interest as I do. Through these events, I did not only boost my social skills but also learnt a lot of new knowledge from them. That was how I developed my leadership and management skills too. Though there are still uncountable things I hope to achieve in my university life, I went beyond a lot of my limitations, and cross out a few in my bucket list.

There has been hard times, like the time I was asked in front of everyone to hand in my fees, the time I was almost chased out by a lecturer for not paying, or the time I have to think of alternatives when my father refuse to pay for my fees. It really is not a delightful past to talk about. I did not come from a rich family, nor did I have a perfect family. Sometimes when things are broken, it cannot be fix; when a family is broken, it remain as it is. However, the past is in the past, I do prefer looking at the current and future.

I really appreciate LHCKL who made this possible, for me to not worry about my fees and enjoy my study in university. It truly is my honor, to have LHCKL and members standing with me to go through the obstacles I am facing. The scholarship given, it is not only to pay my tuition fees, but also as a sign of support, that will always be there with me through thick and thin.

Thank you. Sincerely, honestly, thank you Lighthouse Club Kuala Lumpur.



Thank you letter from Family

I would like to sincerely thank the Lighthouse Club HK Benevolent Fund for all their support.

About 2 years ago, my husband was diagnosed with a serious medical condition and was not able to work. The doctors did not have any idea on when he will recover or if he would be able to work. Month after month went by, I hoped that he will get better and be a husband and father again.

I was alone – raising our child, supporting our household and taking care of my husband. After 18 months of his illness, I was barely holding my family life together when without warning, I was made redundant from my job. By that time, I was mentally and psychically exhausted and close to a nervous breakdown.

Without a job and desperately looking for work, your generous charitable gift help our family tremendously. I could pay rent, several months of my daughter school fees, my husband's medical bills and many other living expenses. Your gift saved my family and allowed me to "take a breath" to find the strength to move forward.

Thank you, Lighthouse Club for your kindness.

Letter of Appreciation

To: The Lighthouse Club

My husband passed away on site and left behind me and my son. We were facing great financial difficulty as we had lost our breadwinner. The financial assistance received from the Lighthouse Club relieved our financial pressure and helped us to get through the most difficult time of our lives. My son would not be able to continue his studies if not for the help from the Lighthouse Club. We wholeheartedly appreciate the help offered by the Lighthouse Club.

My son knows that the assistance is not something he should take for granted, hence he has been studying very hard. His dream is to be a physiotherapist so that he can help injured people and, in particular, injured construction workers to recover.

Thanks once again to everyone in the Lighthouse Club! We wish you good health and happy life.

Regards
Ms. Su



SEASON'S GREETINGS AND BEST WISHES FOR 2017 FROM THE TEAM AT HFW

With a team of over 25 lawyers in Asia Pacific, Holman Fenwick Willan's construction team works with contractors, owners, operators, consultants, funders and insurers across the whole spectrum of a construction project – from procurement, risk assessment and management through to dispute resolution.

Our track record includes some of the largest and most technically complex projects in the world, particularly energy and infrastructure.

For further information about how we can help your business, please contact:

Nick Longley

Partner, Hong Kong/Melbourne
T: +852 3983 7680/
+61 (0)3 8601 4585
E: nick.longley@hfw.com

Martin Downey

Partner, Hong Kong
T: +852 3983 7684
E: martin.downey@hfw.com

Nick Watts

Partner, Sydney
T: +61 (0)2 9320 4619
E: nick.watts@hfw.com

Matthew Blycha

Partner, Perth
T: +61 (0)8 9422 4703
E: matthew.blycha@hfw.com

Haydn Dare

Partner, Jakarta
T: +62 816 816 729
E: haydn.dare@hfw.com

Colin Dodd

Consultant, Hong Kong
T: +852 3983 7681
E: colin.dodd@hfw.com

David Ulbrick

Special Counsel, Perth
T: +61 (0)8 9422 4701
E: david.ulbrick@hfw.com

Brian Rom

Special Counsel, Melbourne
T: +61 (0)3 8601 4526
E: brian.rom@hfw.com

Lawyers for international commerce

hfw.com

São Paulo London Paris Brussels Geneva Piraeus Beirut Riyadh Kuwait Dubai Singapore
Hong Kong Shanghai Perth Melbourne Sydney



Ask FUGRO

Throughout 2016, Fugro has been showcasing specific examples of how its innovative solutions help customers around the world.

If you want to know how
#AskFugro

www.fugro.com/ask

High performance art



Text: Michael Hoare
Images: Hip Hing Construction
Redenrings: WKDCA

Bringing a piece of eagerly anticipated architecture into being brings with it accolades as well as a unique set of pressures to work under close public scrutiny; in its work on the West Kowloon Arts District's Xiqu Centre, Hip Hing Construction is helping create an iconic building

For more than two decades, Hong Kong has waited for the arrival of the West Kowloon Arts District. It's not there yet, but led by the soon-to-be-completed Xiqu Centre, the 40 hectare peninsula is on the way to becoming a spectacular addition to the city's cultural and social offering some time between 2020 and 2021.

With a workforce of 1,000 on site at its peak, the Xiqu Centre is at the eastern edge of district at the junction of Canton Road and Austin Road, will be the first showpiece construction to be completed on the site. The job of constructing the Bing Thom Architects and Ronald Lu and Partners' design relies on the expertise of Hip Hing Construction Co., Ltd. "Hip Hing is very proud to be awarded the Xiqu Centre project, the first major performing arts venue of the West Kowloon Cultural District," says Hip Hing Executive Director Patrick Kwan Mei Sing.

West Kowloon currently has one building in service, the M+ Pavilion, which opened in September, but the Xiqu Centre – xiqu is the pinyin representation of the Putonghua for Chinese Opera – will become the first of the headline structures in situ.

The opening of the centre for Chinese opera has not yet been set, but is most likely to be in 2018. It's a striking design, significant for its high-value architecture. While the M+ Pavilion is designed to blend into its environment, particularly important while the remainder of the contemporary arts museum is built around it, the Xiqu Centre stands out.

The centre's seven-storey design is said to represent qi, or the concept of flow, through its curved planes and arched openings. Positioned at the arts district's entrance, the building represents a gateway, in the form of a pavilion, and presents its openness at each of its four corners. Generous covered public space at ground level represents a traditional Chinese courtyard.

With its distinctive draped curtain walls spilling over from the roof to the ground, the Xiqu Centre will house everything from shops and restaurants to a teahouse with a performance stage. The centre will include an area dedicated to arts education and public leisure space, and boast a second theatre with a contemporary design that seats more than 1,000 people.

For Hip Hing, the site presents its own issues, primarily the constraints of working next to the MTR's Express Rail. Kwan says the work has been a challenging exercise.

"This landmark cultural venue also requires sophisticated engineering solutions to tackle the challenges in erecting the 2,400-tonne theatre structure to 45 metres above Canton Road," he says. "The mega-steel structure was prefabricated at the ground level and jacked up slowly by heavy-lift method."





In May, the main theatre structure was lifted into its final position at the top of the building. It makes for spectacular viewing, if you haven't already seen the lift.

"The architectural design of the Xiqu Centre is in a highly irregular layout, which means that good project co-ordination and planning are critically important to optimise engineering solutions. The trilateral collaboration and trust between Hip Hing, the client and consultants is essential throughout the design and construction process."

Each of the challenges aside, Hip Hing has maintained its emphasis on site safety and environmental protection. The project was granted the Innovation and Excellence, Green and Safety Projects Hong Kong Diamond Award and the New Build, Green and Smart Integration Award by the Chartered Association of Building Engineers. The work has also claimed a silver award from the Construction Industry Safety Award Scheme.

Supervising the Xiqu Centre project has been a significant project for Kwan. He joined Hip Hing as a site engineer in 1985 and has been Executive Director since 2016. He graduated in 1980 from the Polytechnic of Central London, which is now known as the University of Westminster, with First Class Honours in Civil Engineering. He is a member of the Hong Kong Institution of Engineers, the Institute of Civil Engineers and the Institution of Engineers, Australia.

"The engineering solutions for the Xiqu Centre are one-of-a-kind," he says. "We engaged three heavy-duty tower cranes. Currently, they are three of the highest tower cranes in Hong Kong. For the heavy lifting process, we employed specialists from Mainland China to operate 12 400-tonne hydraulic jacks."

If the roof's lift was the pivotal moment in the construction so far, Kwan acknowledges that its fabrication was an equally difficult task.



“Fabricating the roof with complicated geometry is not an easy task, but its enormous size and weight also meant difficulties in site erection and logistics,” he says.

“Before we carried out the heavy lifting, we carried out a comprehensive design check for all permanent structures and optimised temporary works for fabrication and construction. There was a lot of risk assessment and safety provisions out in place for the high-level work and fail-safe measures for heavy lifting.”

“We implemented phased logistics planning to allow for delivery of fabricated structural steelwork, accommodation of heavy duty mobile cranes, as well as to free up spaces within a congested working space to build aerial working platforms for ground assembly of trusses.”



As is befitting for what should be an iconic building, sustainability has been built-in, from the design to the delivery. From Building Information Modelling at the design stages, to integrated Facility Management, and the district-wide integration of Building Management System with the remainder West Kowloon, there are important sustainability measures.

“One of our missions will be providing the interface for the future district-wide cooling system,” says Kwan. “Furthermore, Photovoltaic panels and intelligent lighting control will be installed. With these sustainability measures, the Xiqu centre is targeted to obtain a BEAM Plus Gold Rating.”

Inside and out, and from planning through to its construction, the Xiqu Centre is on track to be an outstanding building, made with ingenuity and care by companies with the highest standards, companies like Hip Hong Construction.



協興
HIP HING

新創建築集團成員
Member of NWS Holdings



SEASON'S GREETINGS!

and Best Wishes for the New Year from
the Global Construction Practice Team
of Navigant

THE CONSTRUCTION TEAM'S SERVICES INCLUDE:

- Quantum & Delay Experts
- Claims Preparation
- Project Scheduling
- Dispute Resolution
- Training & Seminars

CONTACTS:



Gary Crossley, Managing Director
gcrossley@navigant.com



Jon Prudhoe, Managing Director
jon.prudhoe@navigant.com

SINGAPORE

460 Alexandra Road
#22-05 PSA Building
Singapore, Singapore 119963
Tel: +65 6276 9050

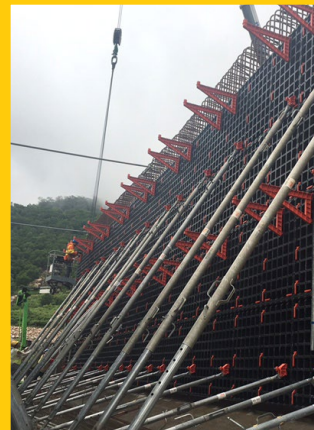
Hong Kong

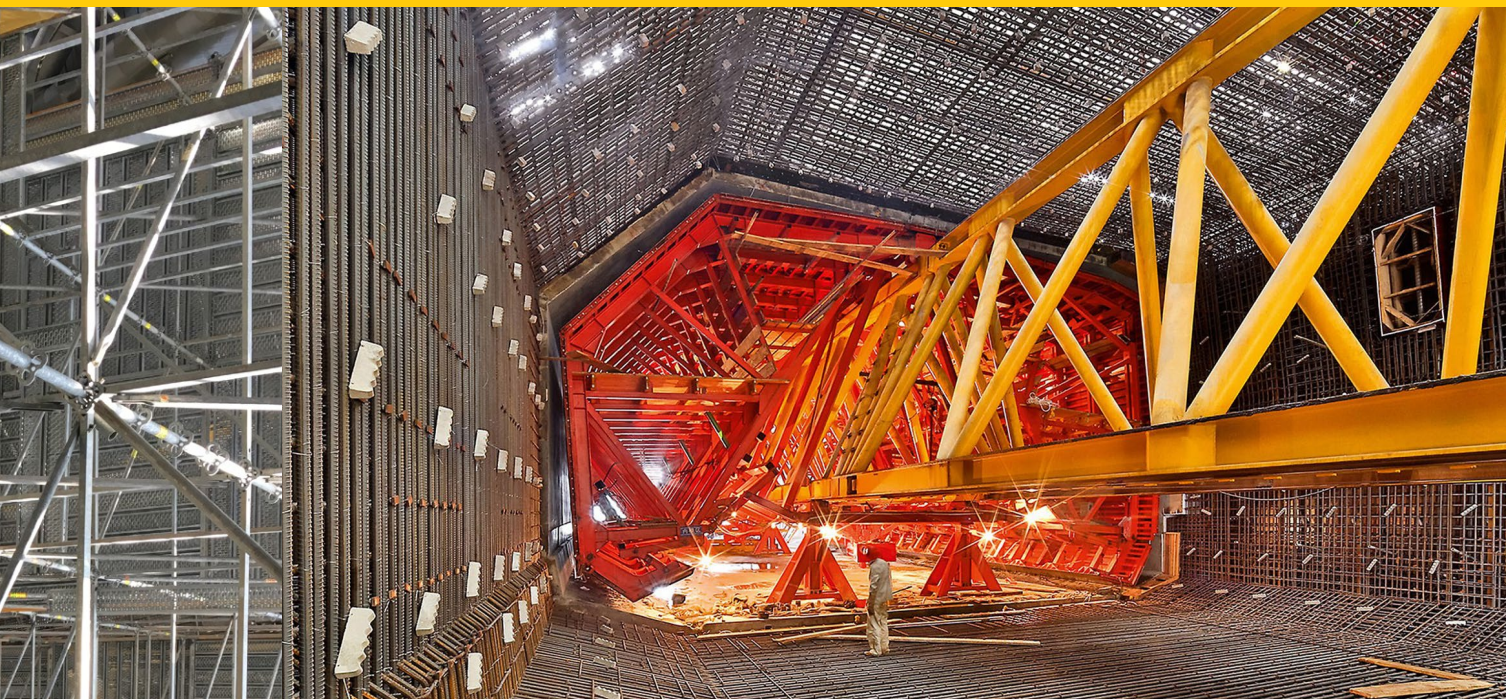
108 Gloucester Road
Dah Sing Financial Centre Suites
2901-2904, 29th Floor
Wanchai, Hong Kong, China
Tel: +852 2233 2500



PERI

Your reliable partner for upcoming challenges





PERI is one of the global leaders in manufacturing and supplying formwork, shoring and scaffolding systems, as well as delivering customized engineering solutions. In 2015, PERI further expanded its foothold in the APAC region, and PERI Hong Kong became the most recent subsidiary of this family-run German Corporation.

Operational Efficiency

We see customer satisfaction as the most important product of PERI—maximizing customer benefit is always our priority. In order to deliver PERI products and services to our customers in the most cost-effective manner, we emphasize flawless cooperation and efficient communication among departments. Development, production and quality assurance work hand in hand for consistent high quality on a sustained basis.

Logistics Management

We believe a close-knit network of logistics sites is the key to fast availability of materials for every project. We strive to provide customers with the best material in the right quantity, at the right time, in the right place. Through the rental of PERI material, we reduce the capacity utilization risk for our customers and also ensure consistent quality of formwork, shoring and scaffolding systems. From order-processing to delivery, every process is clearly defined to provide a high level of transparency.

Customer Training

We value the importance of delivering our knowledge and years of experience to customers anytime, anywhere. We seize every opportunity to organize seminars and workshops not only to demonstrate the latest PERI innovations, but also to train participants for the day-to-day use of PERI products and reveal practical tips and tricks. We have successfully organized customer training sessions and mock up demonstrations in 2016, more are coming in 2017.

Continuous Support

We are your reliable partner for the whole construction process in all phases of the projects – before, during and after. We are there for you – with efficient and safe formwork and scaffolding systems, the right solutions for every requirement and our full support. If required, our supervisors are happy to provide on-site support for a safe and effective use of PERI solutions.

Project Highlights

Throughout 2016, PERI Hong Kong has participated in various projects including:

- West Kowloon Teminus, Guangzhou-Shenzhen-Hong Kong Express Rail Link
- M+ Museum, West Kowloon Cultural District
- Liantang / Heung Yuen Wai Boundary Control Point
- Shatin to Central MTR Link, multiple projects

PERI services for your projects - Formwork, scaffolding and engineering from one source

Lighthouse Club Asia Pacific Region Committee Meeting, Manila, Philippines, 12th November 2016

After two very busy evenings on the 10th and 11th November, being the Battersby Kingsfield Limited's annual cocktail party and the Lighthouse Club Hong Kong Branch Annual Dinner, a rather jaded crew of assorted-country Lighthouse Club Members headed to HKIA to catch flights to Manila. The early-birds, John Battersby, Steve Tennant, Richard & Michelle Poulter, managed an uneventful journey. For some of the rest, there were tales of luggage left on platforms at Hong Kong Station, long walks to one of Cathay's lounges, mad dashes to the plane (that moment when you realise the lounge isn't announcing flight boardings...), finding nowhere to stow your hand luggage, being seated next to the Chelsea supporter who proceeds to tell you the history of that Club for the next two hours... Such is the life of the APR Committee member!

In any event, we all arrived safely at Ninoy Aquino International Airport, crammed into the BK Philippines company vehicle and were whisked off to the Marriott, no more than a hundred yard walk as the crow flies, but a half hour car journey in Manila's traffic. Arriving at the hotel, we checked in and were all but a few minutes late of the starting time for the 3rd Committee Meeting of 2016/2017.

It was a well-attended meeting with lots of interesting discussion after which a few of the more talkative attendees adjourned to the bar for much-needed beer. Following that, we all found ourselves with a little time to get ready for the evening's entertainment: Lighthouse Club Manila's 20th Anniversary "Roaring Twenties" Annual Party.

With goody bags for the girls (the writer found a miniature of her favourite tipple in hers!), cigars for the boys, lots of gangsters, flappers, feathers, pearls,



long-cigarette holders and 1920s jazz playing in the background, the evening started off with a variety of cocktails at the Gin Bar which were followed by wine on the tables and finished up with yet more gin! In between, there was a splendid dinner, raffles, auction, lots and lots of dancing, balloons, more dancing, solo singing but most of all, laughter throughout the evening.

And what did we discuss in the meeting? Those from different clubs gave a summary of their activities; the membership sub-committee reported on a few constitutional issues which need reviewing; the Design for Safety Award 2017 was mentioned – and a good thing too as it seemed that not all countries had heard about it! -; we heard about the Young Members Group (YMG) and Women In Construction (WIC) activities in Hong Kong and how it was hoped that other clubs could form their own YMG/WIC; decisions were made on locations for future meetings, including Australia and Myanmar in the next few months.

On a serious side, the Asia Pacific Region does its best to bring together people from the branches. After all, we all have the same aims. It not only supports those places where a branch cannot be properly formed, like Vietnam and Cambodia, but it also wants to find out more about the people giving up their time to help others. This is one of the main objectives of the Lighthouse Club and as we make the transition from The Lighthouse Asia Pacific Region to The Lighthouse Club International, our future global organization, we hope that all Clubs everywhere continue to attract people as members who are willing to put something back and help those in need.





*Season's
Greetings*

*The Partners and Staff of Deacons
wish you a Happy Festive Season
and a Prosperous New Year.*

Deacons' award-winning construction practice provides a high-quality, integrated service, tailored to our clients' specific requirements. We frequently advise a range of market-leading international and domestic employers, contractors and consultants, as well as financial institutions and government organisations in prestigious projects across the region. With well-established offices in Beijing, Shanghai and Guangzhou, we have deep roots in the regional markets.

For further information, please contact



Joseph Kwan, *Head of Litigation & Dispute Resolution*

Tel: +852 2825 9324

joseph.kwan@deacons.com.hk



Cheung Kwok Kit, *Partner*

Tel: +852 2825 9427

kwokkit.cheung@deacons.com.hk



Joseph Chung, *Partner*

Tel: +852 2825 9647

joseph.chung@deacons.com.hk

Lighthouse Club Annual Dinner

Room N201, Hong Kong Convention and Exhibition Centre

11 November 2016

Text: Mike Atkin

Hosted by the eternally affable Richard Poulter, Social & Fundraising Committee Secretary and events guru, the evening got off to a suitably liquid start with pre-dinner drinks outside the venue overlooking the harbour. 238 people were called to 20 tables for dinner.

Richard headlined his preamble with the Lapdog Challenge, a long distance running event around a 400 metre track. Derrick Pang, esteemed member of the Benevolent Committee, had generously pledged to match, dollar for dollar, the total amount raised by all other sponsors of the event. The furthest distance run by a competitor was over 100 laps, equivalent to a marathon distance. The average was 50 laps, or a half marathon. Two trophies were presented, one for best team and one for best individual. Team Leighton won the first and their Alex Tang individual prize. A splendid effort. A giant cheque was presented on stage.



The keynote speech was made by Derrick Pang, featuring a brief history of the Lighthouse Club along with a very personal tale of how as a 14 year old he was instructed by his family to stay at school and not waste time on construction, “a most deadly industry”. He was also advised to “look after your workforce” and “follow what your heart tells you to do”. Derrick, now Deputy Chairman of Chun Wo Development Holding Ltd. has done just that.



John Battersby followed Derrick onto the stage. He reasoned that rather than looking back over the last 30 years, why not look forward? John called Derrick, Cordia Yu, Shannon Ho and Prasad Ekanayake to the stage and explained that they would speak instead of him. He then shared the new Lighthouse Club video containing soundbites from the four youngsters along with a beautifully crafted tale of the 30th Anniversary events. This was rounded off with a toast to "The Club".

While the pink hats made their way around the venue, the food, as always, was seamlessly distributed, consisting of pumpkin potage, seabass tranche or beef wellington, apple and rhubarb crumble, coffee or fine tea. Top notch as always.

Richard finished off the evening with well wishes to all of those heading on to Wanchai and also those on the 8am flight to Manila for the Asia Pacific Region meeting and Manila 20th Anniversary celebrations.





LETTER OF APPRECIATION

On behalf of the attendees of HKU, I would like to express our sincerest gratitude to the Lighthouse Club for the invitation to the Lighthouse Club Annual Dinner 2016. Additionally, we are grateful for the sponsorship from the following people:

Mr. Bob Park (President of the Continental Engineering Corporation)

Mr. Hugh Wu (Chairman of the Lighthouse Club)

Prof. Steve Rowlinson (Professor at HKU & Executive Committee Member of the Lighthouse Club)

Attending the dinner gave us a good experience. We were able to interact with people from the construction industry, learn and share ideas with them. The insights gained were very valuable in a number of ways. For those of us who have never attended a Lighthouse Club event before, the Annual Dinner provided an excellent introduction, and many of the students have signed up to be members by the end of the evening. As new student members of the club, we look forward to building our potential to understand and work with the industry through such events.

We would take this opportunity to mention that we are interested in helping organise and participate in future events of the club; formal or informal.

Safety, Health & Environment (SHE) Day 2016

CLP Power staged its Safety, Health & Environment (SHE) Day 2016 at Black Point Power Station on 5th November 2016. The theme of this year was "My Commitment, My Responsibility". Various game booths and activities were organized and recognitions were presented to staff and contractors with outstanding contributions to safety.

About 6,000 participants including staffs, contractors and their family members joined this joyful event.



One of the new initiatives this year is the "360 SHE Engagement". We invited participants to take photo with PowerKid, a character created to deliver a message to young children about energy conservation and the need for environmental protection and greener lifestyles, and with their families and friends on social media to show their commitments on SHE.

In another new initiative named "4 in 1 Photo Competition", CLP Staff were invited to submit their ideas of SHE Commitments related to oneself, family, colleague and friends through a 4-in-1-photo. The winners of the competition were invited to share their tips on daily safety, health and environment commitments.



The Lighthouse Club would like to thank CLP for donating entry tickets to the families assisted by our charities.

Meet Laura Dekker



The Women In Construction Group were delighted when they were given the opportunity to hear a presentation from Laura Dekker, the young Dutch lady who sailed single-handedly around the world when she was just 14 years old. Laura was in Hong Kong to take part in the Hebe Haven 24 hour Charity Dinghy Race on 5th/6th November 2016 but gave up an evening to entertain an audience of 50+, hosted by King & Wood Mallesons, and tell us about her extraordinary life:

Laura Dekker has had the sort of transient life that most of us will never experience. Born and brought up, virtually, at sea, this remarkable young lady decided she would circumnavigate the world at the age of 8, a dream which she started when she was 14 and finished at 16.

The daughter of a boat builder father and street-performer mother, Laura was born in New Zealand during one of her parents' voyages around the world. Growing up in many different countries and experiencing different cultures, albeit for only days at a time, moulded her into a resilient, self-sufficient and totally independent person at a very young age. Not surprisingly then, does she appear to have more of a connection with boats and the sea than when faced with large or small audiences. Her comfort zone is obvious from the many photographs taken of her at sea on her beloved "Guppy", the 38 foot ketch which transported her from Holland to St Maarten in the Caribbean, all the way around the world via the Cape of Good Hope and beyond, back to the country of her birth.

During her trip, Laura met various people on remote and not-so-remote islands. In particular, was one family who helped her when she injured her foot & refused to let her leave until it had healed properly. These islanders had no Westernised medical facilities and used traditional methods from

Mother Nature to apply to the wound. It took only a few days until she was well enough to continue. Had she not, she may have ended up with a permanent injury.

Laura also had a temporary "passenger" - an exhausted gull took refuge on "Guppy" for a few days only to leave a rather unpleasant parting gift! When some of the boat's electrical equipment started malfunctioning Laura couldn't work out what the problem was, until she climbed one of the boat's masts and checked out the solar panels at the top. You know the phrase "when the **** hits the fan" - in this case, it was all over the panels! Just one of the minor perils of being at sea...

At 21 and now married, Laura has lost none of the passion for sailing and is about to embark on the purchase of a new, bigger boat in which she can offer a sailing experience off the coast of Patagonia where, in her words, "people will be able to see there is so much".

Indeed, there's a lot of sea out there but we're yet to meet somebody who lives and breathes it as much as Laura. An amazing lady and a great story.



Women in Construction - Yoga in Tamar Park

by Diana Hutchinson

With the iconic, beautiful and colourful Hong Kong skyline as our backdrop, the Women in Construction group enjoyed a break in the rain (just prior to the T8 signal being issued on Friday) to have a glorious Thursday night of Yoga. Set in the beautiful Tamar Park, the yoga group set up a spot on the grass beside some bootcamp groups. In contrast to the bootcamp's hardcore exercises, the lovely Gillian as our instructor lead us in some gentle stretches, downward dogs and sun salutations, with relaxing music, to unwind and de-stress from our workdays.

The group also all had a bit of a laugh toward the end of the class when Gillian got everyone to step up the pace and move into a difficult balancing position called a 'Crane/Bakasana.' Gillian also stretched the group further to finish the class upside down in a wheel/backbend bridge position which everyone attempted! A very big thank you to Gillian for leading a wonderful Yoga class and a big thank you also to those who participated and came along to the Yoga in the Park.



Sale of Car

Our member lawyer Henry Sherman found a novel and practical way to help the Hong Kong charities.

Henry was planning on selling his car, and offered to pay the proceeds of the sale to the Hong Kong charities.

With Henry's agreement and assistance, we put the car up for auction amongst the members. After an enthusiastic bidding period, the successful bidder was Darryl Gray of Leightons.

The sale has been completed, Darryl is the happy new owner of the car, and the charities have been the recipients of the proceeds of the sale.

A big thank you to both Henry and Darryl, and also to all other members who took part in the bidding process.





BKAsiaPacific

Season's Greetings

BKAsiaPacific

www.bkasiapacific.com

For over 30 years BKAsiaPacific has been providing a comprehensive network of Commercial and Contract Management; Dispute Resolution; Project Management; Quantity Surveying; Planning and Programming; Training and Professional Development services to the local and international construction industries.

Key Contacts

Hong Kong

John Battersby

johnbattersby@bkasiapacific.com

Nicholas Seymour

nseymour@bkasiapacific.com
+852 26872267

Singapore

Wilson Cheung

wcheung@bkasiapacific.com
+65 62742291

Malaysia

H T Ong

htong@bkasiapacific.com
+60 3 79872212

Thailand

John Baker

johnbaker@bkasiapacific.com
+66 2 6622306

Philippines

Cecilia De Castro

mcdecastro@bkasiapacific.com
+63 2 8452618

Vietnam & Cambodia

Colin Johnston

cjohnston@bkasiapacific.com
+84 8 38215458

Macau News



The Lighthouse Club Macau (LCM) currently has more than 200 members, including 20 corporate members and 100 individual members. As the construction of major resorts in Macau is coming to an end, 2017 will be challenging in terms of maintaining membership and finding new members.

Monthly functions were held in September sponsored by Hilti (HK) Ltd, in October sponsored by Willis (Hong Kong) Ltd and in November 2016 by Lai Si Construction and Engineering Company Limited. Sponsorship for our monthly functions for 2017 is being followed up.

The Lighthouse Club Macau second annual Golf Day was held on 04 November 2016 at Caesar's golf course in Cotai. Originally planned to be held on 21 October, the event had to be rescheduled because of the typhoon 8 signal being hoisted on that day. The event was very successful.

Our thanks go to our generous sponsors, who sponsored holes and prizes:

- Lai Si (Team 1)*
- Min Da (Team A)*
- Circle (Team A)*
- Sun Ming Sang*
- Tong Lei*
- Pine Wood (F.E.) Intl. Ltd.*
- Modern Concrete Drill Cut (Macau) Co., Ltd.*
- HMS Golf Club*
- San Fong Seng*



Following the golf competition a BBQ dinner was held at Sands Cotai Central, Sheraton Hotel pool deck. The dinner was sponsored by Top Builder Group. The award ceremony was held during the dinner with many competitors winning prizes. Thanks also to our treasurer, Phil Clarke, who organized the event.

In 2016 to date LCM has made donations of almost MOP300,000 to the next of kin of six workers who were involved in fatal construction accidents in Macau and also to one worker who lost his eyesight. This is once again a demonstration of how the Lighthouse Club helps victims of construction accidents.

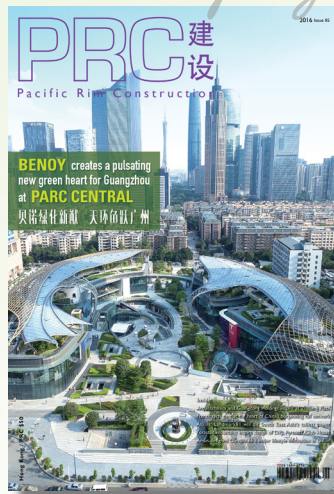
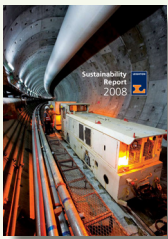


Merry Christmas

& HAPPY NEW YEAR

100% committed to serving the local building industry

ROF Media is the Hong Kong media group focused solely on building and construction. We create high-quality customised publications for a broad range of leading businesses. Since 2002 we have been providing effective solutions targeting high net worth individuals for our clients' tailor-made marketing materials, in print and online.

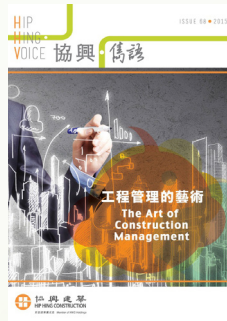


READ THESE BOOKS ONLINE NOW!



Newsletters

Books



Catalogues



SCAN HERE

for more of our custom publishing services

ROF Media

+852 3150 8988
info@rofmedia.com
www.rofmedia.com

Singapore News



The end of the year has continued to be busy for the Lighthouse Club in Singapore, especially with the high point of the Dinner & Dance taking place during November, where the club succeeded in raising S\$14K to support those in the industry in need. Along with the annual golf tournament, the Dinner & Dance is one of the major fund raising events that takes place during the year!



Corkjoint made good on its commitment to provide a space on its stand at the BuildTech Asia in Singapore. This provided the branch with the opportunity to have a permanent presence during the entire trade show helping to raise the profile of the Lighthouse Club in Singapore and the wider region.

In addition to the Dinner & Dance the Lighthouse Club Singapore had a joint Curry Quiz night with the Society of Construction Law – this was very well attended and contributed to the club’s coffers. Fundraising efforts continue through a variety of avenues, the backbone of which remains the monthly meetings, kindly supported by our sponsors, with Hill sponsoring the November get together, and attended by a growing number of members keen to promote the Club’s work in Singapore. These are held on the second Thursday of every month. This is usually accompanied by a raffle with the lucky winners leaving with a variety of meat.



The end of year Christmas get together is always a special event for Singapore, not only are there the usual festivities, but this is also an opportunity for members to donate gifts for children who unfortunate enough to be in hospital during the holiday period. These are then donated to one of the local hospitals by the committee.





AIM Group Ltd
3605 AIA Tower
183 Electric Road
Hong Kong
T: +852 2572 6533
F: +852 2572 7966
www.aimgrp.com

TO ALL OUR CLIENTS, ASSOCIATES AND FRIENDS



MERRY CHRISTMAS AND A HAPPY NEW YEAR

News from Malaysia

All our events are posted on Facebook: www.facebook.com/LighthouseClubKL

The Lighthouse Club of Kuala Lumpur has had a busy period with a One-Day International Conference and a Golf Day at Templer Park in September 2016 and our Annual Party at the KLRCA in November 2016

As at November 2016 the Lighthouse Club KL has 115 members of which are 6 corporate members.

LHC KL Monthly Get Together's were held at El Sid's on 14 July 2016, Jarrod and Rawlins Jalan Bangkung on 4 August 2016, Havana on 1 September 2016 and at El Sid's again on 6 October.

LHC KL last Get Together of 2016 will be held in Jarrod and Rawlins Jalan Bangkung on the 1st of December.

Kuala Lumpur Annual Golf Day

The Plus 3 Lighthouse Club of Kuala Lumpur "Claret Jug" Golf day was held Saturday Afternoon on 24th September at Templer Park Golf Club few kilometres just outside KL off the Rawang – KL Highway and as always the Golf Club facilities were excellent and the course itself provides a great backdrop. The weather was good although sticky but had none of the haze that beset us last year.

This however did not deter the 58 participants (slightly up on last year) consisting of LHC members and guests from various KL golfing societies who had an enjoyable day on the course with the drinks cart providing laughs on the way.

As form of fund raising we run a 2 club competition: who could hole out in 2 strokes on any hole and to use the golf terms is a birdy on Par 3, an Eagle on par 4, and Albatross on Par 5; there were 6 winners.

This year's competition played the same format as last year i.e. a 2 man Better Ball Stapleford Competition over 18 holes unfortunately the scorecards issued by the club were not in accordance with a team format compounded by many who play golf seemingly unable to fill a scorecard correctly creating an endless problem resulting in a nightmare to establish the final scores causing a little bit of discontentment during prize giving.

The golf club provided both light buffet lunch, and dinner where at prize giving and the raffle draw took place. Possibly the sign of the times as sponsorship was down this year compared to previous but we still managed to break the even point.

Golf winning prizes were provided by VK Enterprises and raffle prizes of whiskey, wine were donated by various individuals.

Our thanks go to the following sponsors: Plus Three Consultants, Driver Trett, BK Burns and Ong /Entrustly, Winners for the day:



Novelties:

Nearest to pin: holes 8th and 11th won by Jon Woollins -3'7" and Emy Yap 9'9" respectively

Longest Drive: John Paterson – 318 yds

Nearest to the line: Domenice Duncan -3'0"

Competition Winners:

1: Twin Norway – Ole Gismo & Lars Gismo – 52 points

2: Strokes of Luck – Dan Whitehouse & John Campbell – 48 points

3: US Embassy: Monet Men & Guy Stout - 46 points

Thanks also goes to the LHC Volunteers for being the fun Drink Cart Drivers and assistance at registration always appreciated: Clarise Low, Bev Stubbs, and John Arkinstall.

We look forward to next year.

One-Day International Conference on Avoiding and Resolving Construction Disputes

The Lighthouse Club of Kuala Lumpur (LHC) in collaboration with The Chartered Institution of Civil Engineering Surveyors (ICES) and The Chartered Institute Of Building (CIOB) had successfully organized a One-Day Conference on 22 September 2016 at the Armada Hotel, Petaling Jaya, Malaysia. This conference was the first of its kind where the proceedings, after deducting all expenses incurred, will be donated for good cause to charitable bodies, such as Ti-Ratana Welfare Society and the Lighthouse Club of Kuala Lumpur.

The Construction Industry in Malaysia is, just as in other regions, dynamic and constantly changing and it brings many challenges to be resolved by those who are involved in these projects. Inevitably problems related to project and contract management will surface due to the unique nature of each project. As such it is in the interest of industry players and especially the professional institutions to promote good practices from Malaysia and the Asia Pacific region and create awareness and understanding of the root causes that lead to disputes.

This one-day conference had the following speakers and topics:

Dispute Avoidance and Resolution from the perspective of a construction practitioner by Robert Pegg of BK Asia Pacific. The focus of this topic was about the important developments made in advancing various forms of disputes resolution in the past few years, especially in Hong Kong. Some examples were Adjudication, Mediation, Non Contractual Partnering and NEC Contracts.

Integrated Project Management by Tan Sri Dr. Ir Jamilus Hussein of KLIA Premier Holdings and he offered his experiences on the KLIA development and specifically the Project Objective, Delivery Value, Project Control, Project Phasing and Project decisions and TCQOI (Time, Cost, Quality, Organization & Information) in such projects.

Construction Management and Safety by Anthony Edwards of Daewoo Engineering and Construction. Anthony highlighted the importance of Project Management Planning, Safety, Time Management, Cost and Contract Administration Management, Quality Assurance and Quality Control, Engineering.

Defects – Implications and Management by Sr Ong Hock Tek of BK Burns and Ong. HT presented his paper on What are defects, Relevant contractual provisions, Who is responsible for the defects, Relevant legal cases, Defects management and the common problems in issuing of Certificate of Practical Completion due outstanding/ non-compliant works which leads to disputes.



Ar. Steven Thang Boon Ann of NVT Architects shared his experiences on Review PAM Form of Contract 2006 which included a look back into the history of the PAM Form of Contract in general, previous reviews, CIPAA, the impact of Technology and he highlighted the contract documents that often lead to disputes.

Mr. Ben Olbourne of Thirty Nine Essex Chambers spoke on 'Resolution of Disputes through Alternative Dispute Resolution'. He also touched on key features, advantages & disadvantages and recent developments of Mediation and Litigation as well as Arbitration.

The last speaker Mr. Lam Wai Loon of Harold & Lam Partnership presented his paper on CIPAA Updates and Recent Cases.

The highlight of the Conference was a lively panel discussion with all speakers moderated by Mr. Roderick Noble, President of the Lighthouse Club of Kuala Lumpur. Many questions were brought up by the delegates which caused excitement and laughter among the speakers and delegates.

With the success of this conference the Lighthouse Club of Kuala Lumpur is encouraged to organize more conferences with institutions like ICES and CIOB to share practical experiences to the practitioners in the Construction Industry where the proceedings will go to charity.



Kuala Lumpur Annual Dinner

The Lighthouse Club of Kuala Lumpur Annual Charity Party welcomed more than 150 guests at the picturesque terrace of Kuala Lumpur Regional Arbitration Centre. As the guests strolled past the Sponsor banners that lined up the walkway, a young boisterous team of LHC Volunteers were busy signing up new members and selling raffle tickets.

The night kicked off with a welcome speech by our President Roderick Noble. Guests were introduced two LHC KL Sponsored Malaysian students studying Quantity Surveying and Architecture at our local universities and Silver Helmet Safety and Health for Site Personnel Winner Miss Candy Lai. Whilst everyone dined and mingled, live music by Rainstack added flavour to the food.

After dinner guests were ushered into the ballroom and fellow LHC KL member Tan Swee Im, having invited Sponsor representatives to draw for the Raffle, successfully auctioned off a romantic weekend stay at The Mandarin Oriental (compliments of Thirty Nine Essex Chambers) and three bottles of whiskey donated by CREG Tunnelling, BK Burns & Ong and Pro Consort, it was pleasing to note some of the winners re-donated their prizes back for a redraw. The purchase of raffle tickets and the auction bidders helped LHC KL raise its highest raffle collection for the year.





As the night continued, guests danced away to classic floor filling tunes played by the live band. Many stayed on to mingle into the night, some having to be kicked out as the lights were being switched off.

A big thank you goes out to our generous Volunteers and our sponsors Plus Three Consultants, AGS Four Winds, CREG Tunneling, Crown Line Group, Driver Trett, Hill International, IPEC Project Systems, Matchtech, RW William, RB International, Techsol, Tony Gee and Partners, our band sponsors Tan Swee Im, Siva and Partners, Thirty Nine Essex Chambers and venue sponsor KLRCa for making it a most enjoyable evening.



Updates from Australia's Branches

Australia branch held the AGM on 17th November in Brisbane, we recruited a number of new volunteers and we are looking forward to a busy and successful year in 2017.

Following the success of the Balls held in July and August this year in Brisbane and Perth, we intend to make them annual events.

We look forward to welcoming the APR Committee to Sydney in early 2017.

Brisbane (Queensland) Chapter

Brisbane get-togethers are always third Thursday of each month from 5.30pm – 7.30pm.

Thanks to the sponsors so far:

- 22 September 2016 – Hill International
- 20 October 2016 – Aquenta Consulting
- 17 November- Driver Trett

Upcoming get-together dates and sponsors:

- 15 December – Father Christmas
- 19 January – TBC
- 16 February - TBC

Venue: Pav Bar, Stamford Plaza Hotel, Edward Street.



Melbourne (Victoria) Chapter

The Victorian Chapter is keen to grow attendance and is actively pursuing sponsorship and clientele for the monthly Get-Together's. Our mailing list exceeds 50 potential members and the average turnout is between 15 and 20.

The inaugural Summer Ball is planned for 24 February 2017 at The Langham and we anticipate a good turnout.

The monthly Get-Togethers are held between 5.30pm and 7.30pm at the Belgium Beer Café, 5 Riverside Quay, Southbank.

Thanks to the sponsors so far:

- 8 September – Currie & Brown
- 13 October 2016 – FTI Consulting
- 10 November 2016 – Holman Fenwick Willan

Upcoming get-together dates and sponsors:

- 8 December 2016 – Hill International
- 12 January - TBC

Venue: Belgium Beer Café, 5 Riverside Quay, Southbank

We are currently exploring possible opportunities for joint events.

Perth (Western Australia) Chapter

We continue to strive to become the prominent construction-oriented group in Perth.

At the start of the year we announced that we were aiming for 100 full paid memberships for the year. We're currently at 95, so we just need a little push to reach our goal. Thanks to the Western Australian community for helping us to get there.

We continue to meet at the Terrace Hotel, St. George's Terrace, Perth, on the last Thursday of every month. The branch has events on the following dates – with many thanks to our sponsors for each:

- 26 January 2017 – Sponsored by Clifford Chance
- 23 February 2017 – Sponsored by FTI Consulting
- 30 March 2017 – Sponsored by T|B|H



Sydney (New South Wales) Chapter

The NSW Chapter continues with its monthly events but are keen to expand upon the numbers that attend.

We have decided to change our venue to promote a fresh impetus. Our new meeting venue is the Verandah Main Bar, 55-65 Elizabeth Street, Sydney, NSW 2000.

The monthly Get-Togethers are being held on the last Thursday of each month between 6.00pm and 7.30pm at our new venue:

- 24 November 2016 – joint get together with the Society of Construction Law Australia – sponsor Driver Trett
- There will be no meeting in December 2016.
- 19 January 2017 – Aquenta Consulting
- 23 February 2017 – Sponsor to be arranged.

Joint events have been organized with SOCLA and potentially Tree of Knowledge. Approaches made to both NAWIC and RICS but joint events are yet to be arranged.



MTR, HONG KONG

Deep beneath the frenetic streets of one of the world's busiest cities, Laing O'Rourke is delivering critical urban infrastructure that will drive Hong Kong's future transport needs.

One of the world's largest privately owned construction and infrastructure companies, Laing O'Rourke pursues innovations that will challenge and change the way the construction industry goes to work.

With operations in South East Asia, Europe, North America, Australia, New Zealand and the Middle East, Laing O'Rourke is committed to fully understanding the needs of its clients, protecting and enhancing the value of their assets, and delivering on its promises – regardless of the scale or complexity of the challenge.

20th Anniversary Gala Fundraiser



More than 300 guests; partners, colleagues and friends enjoyed a night of entertainment at the Lighthouse Club Manila's Gala fundraising event of the year on 12 November 2016 at Marriot Hotel Manila, celebrating Lighthouse Club Manila Branch 20 years' anniversary.

The 1920's finery on display was a sight not to be missed, with colour, glamour and fabulous hair wowing everyone.

The Philippines National Anthem was sung by Natasha Thoburn, before guests were entertained by Replay who entertained with a lively selection of old and new music.

Some special moments caught on camera.

The Lighthouse Club Manila receives funding from Lighthouse Club Hong Kong Regional Charities; the James Battersby Education Trust and the Asia Pacific Region Trust.

All funds raised in Philippines are matched 90% by these two trusts for qualified scholars. 32 students are currently being supported at levels from grade school through university and vocational training.

Acknowledgement was given to John Battersby, the founder of the Lighthouse club in Asia 30 years ago, and Jeremy Plumley who founded the Manila Lighthouse Club 20 Years ago.

Phil Thoburn who is LHCM longest serving member, was also recognized. These three gentlemen's commitment and support is much appreciated.





Diamond Sponsors were RMD Kwikform, and Etihad Airways. TKHS provided physical logistics and manpower. Many others contributed generously. Etihad prizes were economy tickets to any Etihad destination.

A sit down dinner was complemented by a buffet dessert, followed by dancing, and camaraderie.

In keeping with LHCM tradition both live and silent auctions were held, and there was a raffle. Guests were very generous and considerable funds being raised.

The Events Committee Amanda Parker, Arlene Elliot and Elisa Thoburn receiving flowers and thanks for their tireless efforts in making this event a success for the scholars and special projects of the Light House Club Manila. Thank you also to all guests and members.





Cebu Mactan International Airport

DESIGN SUPPLY INSTALL

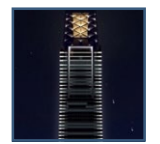
Curtain Wall
 Unitized, Semi-Unitized, Double Skin, Structural Silicone Glazing, Glass Walls, Point-Fixed Glazing, etc.



Roof Cladding
 Stadium and Airport Roofing, Factory Cladding Works, Membrane Roofs, Canopies, Structural Steel, Skylights, etc.



Architectural Lighting
 Accent Strips, Graze Lights, Flood Lights, Signage and Features, Embedded Lights, Museo Lights, Lasers, Search Lights



Special Projects
 Retail Boutiques, Shop Fronts, Entrance Ways, Feature Ceilings and Walls, Balustrades, Free Form Metal Structures



Innovative Construction Solutions

Our in-house designers and engineers are able to support clients through every stage of the project from concept to creation. We help clients to realize projects in the Asia Pacific region and beyond.



ASPECT ASIA

Chartered Quantity Surveyors
Construction Consultancy Services



Aspect Consulting Asia Ltd

Units A & B, 10/F Neich Tower,
128 Gloucester Road, Wan Chai, Hong Kong
Tel: +852 2827 6068 Fax: +852 2827 6168
E-mail: info@aspectasia.com.hk
Website: www.aspectasia.com.hk

Best wishes for the
festive season from the
construction team at
King & Wood Mallesons

We nailed it!

Tier 1 Construction Law Firm
Chambers Asia Pacific and
Asia Pacific Legal 500

**KING & WOOD
MALLESONS**
金杜律师事务所

The Power of Together



Paul Starr
T +852 3443 1118
paul.starr@hk.kwm.com



Edmund Wan
T +852 3443 1119
edmund.wan@hk.kwm.com



Richard Lyons
T +852 3443 1138
richard.lyons@hk.kwm.com

www.kwm.com

Asia Pacific | Europe | North America | Middle East

20 Years

an individual
professional
practice

Gerry Tucker

MBA, FICE, FInstCES, FCI Arb
gt@gerrytucker.com

**Gerry
Tucker
Ltd**

Construction, Infrastructure & related IT - Asia & Middle East

- Project Facilitation, Procurement, Contracts & Claims
- Dispute Prevention, Management & Resolution

Dubai +971.56.223.7199 | +852.9484.3379 **Hong Kong**

www.gerrytucker.com

Pausing to Celebrate & Give Sincere Thanks to all my Clients & Business Partners

First Clients

Bachy Soletanche Group

Berjaya Star City Substructure
Kuala Lumpur, Malaysia
Mr Richard Bromley
1996

Gammon – Balfour Beatty JV MTRC 520

Lantau & Airport Railway – Trackwork
Hong Kong
Mr John Kirton
1996 – 1998

Most Enduring Client

Larsen & Toubro Ltd

Projects in India + Bahrain, Kuwait, Oman, Qatar, Saudi Arabia & UAE
Mr SN Subrahmanyam
2006 – 2016

Business Partners for Two Decades

Wilson & Co

Accounts & Tax
Hong Kong
Ms Christine Suen Kwai Ching

HSBC / Hang Seng Bank

Social Responsibility Partner

Christina Noble Childrens Foundation

www.cncf.org.hk

Let's talk.



Plus 3 sends its warmest wishes to all our clients, friends and families for a peaceful and joyous Christmas and New Year.

Plus 3 helps put your construction projects back on track and back on budget, across Asia.

So, after the holidays, give us a call and let's talk.

For more, visit us at www.plus3.com.my.

Malaysia Plus Three Consultants (M) Sdn Bhd
Contact: Michael McIver
Suite B-3A-12, Block B, Plaza Mont' Kiara,
No. 2, Jalan Kiara, Mont' Kiara, 50480 Kuala Lumpur.
Tel.: +6 03 6201 0996 E-mail: kl@plus3.com.my

Hong Kong Plus Three Consultants (HK) Ltd
Contact: Stephen Tennant
Suite 901, Level 9, The Hong Kong Club Building,
3A Chater Road, Central, Hong Kong
Tel:+852 2851 2528 E-mail: hk@plus3.com.my

SEASON'S GREETINGS

TO ALL OUR PARTNERS IN CONSTRUCTION



Hogan
Lovells

Laying the foundations for success

We've been helping clients on construction projects in Asia for over 30 years.

We wish you all an enjoyable festive season and look forward to supporting your projects in 2017.

Key contacts:

Timothy Hill, Partner, Hong Kong, timothy.hill@hoganlovells.com

Damon So, Partner, Hong Kong, damon.so@hoganlovells.com

James Kwan, Partner, Hong Kong, james.kwan@hoganlovells.com

Kent Phillips, Partner, Singapore, kent.phillips@hoganlovells.com

Terence Wong, Partner, Shanghai, terence.wong@hoganlovells.com

www.hoganlovells.com

Hogan Lovells is an international legal practice that includes Hogan Lovells International LLP, Hogan Lovells US LLP and their affiliated businesses. Images of people may feature current or former lawyers and employees at Hogan Lovells or models not connected with the firm.

www.hoganlovells.com

© Hogan Lovells 2016. All rights reserved.



Ryder

Everything architecture

Our goal is simple – to improve the quality of the world around us and, in doing so, improve people's lives. An approach embedded in the origins of Ryder which remains a touchstone today.

www.ryderarchitecture.com

Newcastle London Glasgow Liverpool Hong Kong



THE CONTRACTS GROUP LTD

COMMERCIAL, CONTRACTUAL & MANAGEMENT CONSULTANTS TO THE CONSTRUCTION INDUSTRY

WE WISH OUR CLIENTS, FRIENDS
AND COLLEAGUES ALL THE BEST
FOR A

Very Merry Christmas &
a Happy, Healthy &
Prosperous New Year



Tel : (852) 2529 1696, Fax: (852) 2866 2725, Email : info@contractsgroupltd.com, Web : www.contractsgroupltd.com



Your projects shape cities.
We shape your projects.



Owned, developed and delivered by



PROJECTION

Our Clients are experts at designing, building and managing multi-billion dollar projects across the world. We are experts in bringing these elements together in one place, in a way that fits your business.

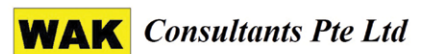
Our industry leading software platform, Scenario Advantage has been servicing mega-projects across Asia Pacific since the mid-90s. Our team of professional consultants have been hired from the industries we serve. We have helped Project Owners and Contractors of all sizes deliver on their ambitions of projects that are on-cost, on-time and to specification.

Our solution is modular and flexible, allowing you to add capabilities as you require them. We are able to integrate our solution with third-party offerings to deliver Senior Management instant access to a single source of truth from anywhere in the world.



Lighthouse Club - Asia Pacific Region Sponsors



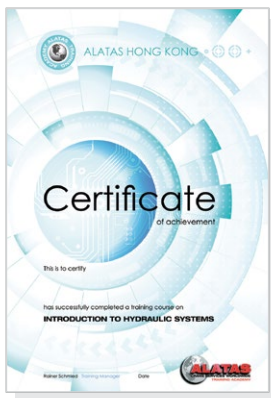
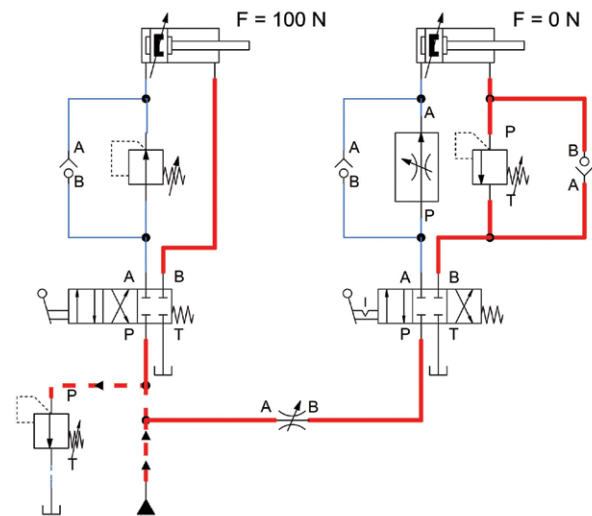


BASIC HYDRAULICS TRAINING



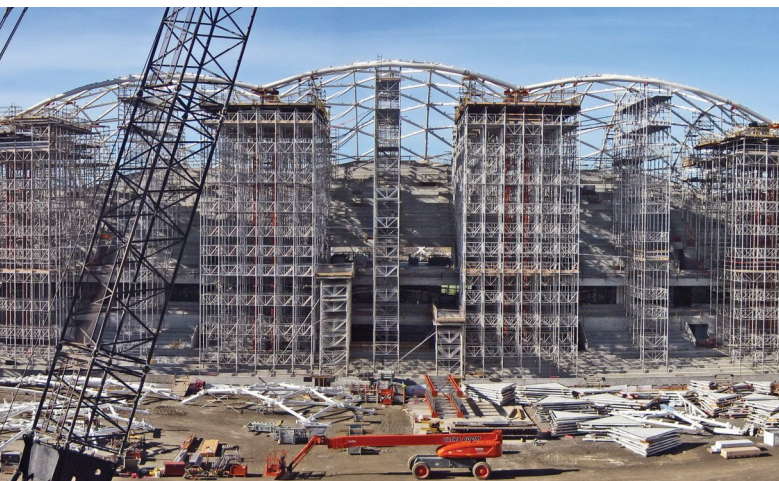
Training Contents:

1. Physical Principles in Hydraulics
2. Symbols used in hydraulic diagrams + Drawing comprehension
3. Open & Closed circuits
4. Pressure Control Valves
5. Flow Control Valve
6. Components in Hydraulic systems
7. Operational & Maintenance Requirements of Hydraulic Systems
8. Trouble Shooting in hydraulics
9. Requirements for overhauling hydraulic components
10. Practical Exercise – Setting up and Testing a hydraulic circuit with training simulator
11. Practical Exercise – Inspection of a hydraulic pump
12. Examinations



Location	: Alatas Hong Kong Training Center
Duration	: 4 Days
No. of participants	: Min. 6 / Max. 8
Language	: English / Cantonese
Prerequisites	: Engineering Foundation / Diploma





Bringing
structures
to life

- RMD Kwikform Asia Pacific provides innovative, productive and safe formwork, shoring and scaffolding systems.
- We are part of a worldwide company that provides a high level of technical and sales support coupled with the latest generation formwork and shoring systems.
- Our extensive product range enables us to provide the best solution to assist you with your next project.
- Our Sales Team consult with their customers to provide the best solution at a competitive price and they provide support throughout most aspects of the project.
- Our renowned engineering capability enables us to work together with our client's construction team to develop, design, and detail cost-effective engineered solutions that are practical, productive and safe.

RMD Kwikform Philippines, Inc

Units 2406-2409 Raffles Corporate Center,
F. Ortigas Jr. Ave., Ortigas Center,
Pasig City, Phils. 1605
Tel: +632-696-7635
Fax: +632-661-6456
E-mail: rmd.philippines@rmdkwikform.com

RMD Australia

66 Bennet Ave, Melrose Park
Adelaide, South Australia 5039
Tel: +61 8 8179 8200
Fax: +61 8 8179 8201
Email: rmd.australia@rmdkwikform.com

RMD Kwikform Hong Kong Ltd.

22/F, Excel Centre,
483A Castle Peak Road,
Cheung Sha Wan, Kowloon
Hong Kong
Tel: +852 2415 4882
Fax: +852 2745 0232
Email: rmd.hongkong@rmdkwikform.com

RMD Kwikform Singapore Pte Limited

29 Tanjong Penjuru (S)
609026 Singapore
Tel: +65 6863 4252
Fax: +65 6863 4275
Email: rmd.singapore@rmdkwikform.com



Wall and slab: one system. Universal. Lightweight. Simple.

PERI DUO – The innovative formwork system

The Hong Kong Construction Industry is facing tough challenges: a shortage of workers and a high demand of residential developments in the years to come. PERI DUO is the solution. A simple formwork system to build safely, quickly, efficiently, eco-friendly and economically.



The universal lightweight formwork which is characterized by its particularly low weight and very easy and simple handling.

Not only the fact that the material used is new but also the overall concept. With an extremely small number of different system components, walls, foundations, columns, slabs and beams can be efficiently formed. In addition to the panels, including the formlining, most DUO accessories are also made of a polymer-based composite material.

Find out more at www.duo.peri.com

PERI Hong Kong, 19D, Tower B, Billion Centre, 1 Wang Kwong Road, Kowloon Bay, Hong Kong
Phone +852 3102 7900, Fax +852 3188 9258



Formwork
Scaffolding
Engineering

www.perihk.com