

the Lighthouse

Events | Fundraising | Industry News

Winter 2015

HKIA adds 3rd Runway

明建會

The Lighthouse Club Asia Pacific Region

Australia | Cambodia | Hong Kong | Macau | Malaysia | Philippines | Singapore | Thailand | Vietnam



Aliis Cum Humanitate

Seasons greetings!

“ Legal 500: **Tier 1** for
Hong Kong Construction



Ian Cocking
Partner, Hong Kong
T: +852 2287 2802
E: ian.cocking@clydeco.com



Gilbert Kwok
Partner, Hong Kong
T: +852 2287 2804
E: gilbert.kwok@clydeco.com

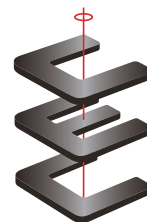




Season's Greetings
On the occasion of
CEC's 70th Anniversary

Continental Engineering Corp. operates in Taiwan, Hong Kong, Macau, India and Malaysia, constructing high-speed rail, tunnels, viaducts, highways, specialist buildings and other infrastructure projects.

For more information, please visit www.continental-engineering.com or contact International Business Division of CEC
TEL: (852)29601398 FAX: (852)29636199



大陸工程公司
CONTINENTAL
ENGINEERING CORP

▼ A MEMBER OF CONTINENTAL HOLDINGS

Chairman's Message

Since our last magazine was published we have held regional meetings in Kuala Lumpur in October and Manila in November 2015. The meetings coincided with a social get together in Kuala Lumpur and the annual ball in Manila, both of which were extremely enjoyable events and demonstrated the enthusiasm and dedication of our Lighthouse Club committees and members.

The proposal on the table to make the Lighthouse Club a global entity is gaining momentum. This proposal will need careful consideration over the coming months so that we can arrive at a decision and an appropriate action plan in the middle of 2016. Congratulations to the Macau branch who celebrated their tenth anniversary in October 2015.

About The Lighthouse Club

The Lighthouse is the magazine of the Lighthouse Club Asia Pacific Region, which was established in 1998. The Lighthouse Club was originally established in England in 1956 and first came to Asia in 1986 with the formation of a Branch in Hong Kong.

The aims of the Lighthouse Club worldwide are to promote good fellowship amongst its members who work in or are associated with the construction industry and to provide charitable assistance to those in need within the construction industry and to their dependents in qualifying cases.

The Lighthouse Clubs that were in existence in 1998 in Asia agreed to the formation of the Lighthouse Club Asia Pacific Region with the following objectives:

- To support and where necessary co-ordinate the work of charitable assistance undertaken by the branches of the Lighthouse Club within the Asia Pacific Region
- To promote the establishment of further autonomous branches of the Lighthouse Club in the Asia Pacific Region
- To promote good fellowship between the members and branches of the Lighthouse Club in the Asia Pacific Region

Official website : www.lighthouseclub.asia

The Lighthouse is online at www.issuu.com/rofmedia



The Lighthouse Club Asia

2016 will also see increased activity related to the 30th anniversary of the Lighthouse Club in Hong Kong and the 60th anniversary of the Lighthouse Club in United Kingdom, both occurring in 2016. The Manila branch will also be celebrating their 20th anniversary in 2016.

As we move towards the year of the Monkey, I wish all our members and their families throughout the region, a very Merry Christmas and also a prosperous and safe New Year.

Keith Buckley
Chairman
The Lighthouse Club,
Asia Pacific Region



In addition to the charitable works of the individual branches of the Lighthouse Club, the Lighthouse Club Asia Pacific Region has two related Hong Kong based charities which provide charitable assistance throughout the Asia Pacific region:

- The James Battersby Lighthouse Club Educational Trust which provides assistance for education and training to qualifying young persons
- The Lighthouse Club Asia Pacific Region Benevolent Trust which provides assistance to relieving poverty and financial need to persons currently or previously employed in the building and civil engineering industries and allied trades where such persons and/ or their dependents are suffering hardship as a result of accident, disability or ill health.

For more information and membership / sponsorship enquiries please contact the Membership Secretary or Deputy Chairman of the Lighthouse Club Asia Pacific Region at lighthousehk@gmail.com. To advertise in this magazine please contact publisher@rofmedia.com or lighthousehk@gmail.com

THE LIGHTHOUSE Winter 2015

The Lighthouse Club Asia Pacific Region
 Suite 1901-2, Hopewell Centre,
 183 Queens Road East, Wanchai, Hong Kong

Tel : +852 2736 9885
 Fax : +852 2687 2252
lighthousehk@gmail.com

Administration Secretary : Ms Elaine Man

Editorial Committee :
 Steve Tennant
 John Battersby
 Vincent Connor
 Mike Staley
 Elaine Man

Published by ROF Media

Publisher : Mike Staley
 Designer : Parnell Chan

E : publisher@rofmedia.com
 T : +852 3150 8988

Executive Committee

Chairman

Keith Buckley
keith.buckley@cotai.venetian.com.mo

Immediate Past Chairman

Willie Kay
willie@wakmc.com

Chairman Elect

Bob Park
rmpark50@gmail.com

Deputy Chairman

John Battersby
johnbattersby@bkasiapacific.com

Secretary

Steve Tennant
stevetennanthongkong@gmail.com

Acting Treasurer

John Battersby
johnbattersby@bkasiapacific.com

Membership Secretary

Jim Chessell
jchessell@bkasiapacific.com

Bangkok

Gareth Hughes
gareth.hughes@rsmthailand.com

Ho Chi Minh City

Colin Johnston
cjohnston@bkasiapacific.com

Hong Kong

John Battersby
johnbattersby@bkasiapacific.com
 Steve Tennant
stevetennanthongkong@gmail.com

Bob Park
rmpark50@gmail.com

Kuala Lumpur

Rod Noble
roderick.noble@39essex.com

Macau

Keith Buckley
keith.buckley@cotai.venetian.com.mo

Manila

Guenter Taus
guenter.taus@jec.com
 Sam Powell
samuel.powell@hmrphils.com

Phnom Penh

Euan Ritchie
ritchie@artisansurfacefinishes.com

Singapore

George Wall
gwall@asgardprojectsolutions.com
 Jim Chessell
jchessell@bkasiapacific.com

Australia

Paul Roberts
Paul.Roberts@aquenta.com.au
 Nick Longley
nick.longley@hfw.com

In This Issue



Airport Expansion

Planning is well advanced
for the third runway at
Hong Kong International Airport

8-15

Regional Branch News

- 31 Macau
- 34 Kuala Lumpur
- 38 Singapore
- 41 Ho Chi Minh
- 42 Manila
- 45 Hong Kong

Sponsors

- 48 Lighthouse Club Asia Pacific Region
Sponsors 2015



Educational Architecture

In Singapore the learning environment
is reimaged for the 21st Century

18-22



Solar Revolution

Renewables are shaking up
the Australian energy sector

26-29

Season's Greetings

and best wishes for the New Year from all the partners and staff at Pinsent Masons.

Hong Kong



Singapore



China



Australia



Today's world moves beyond borders.

A WORLD OF DIFFERENCE IN IMMIGRATION

Fragomen Worldwide is the world's leading provider of immigration services. Immigration is not just one of many practices within our firm—it is our sole focus and it shows. From our offices around the globe, we help businesses and individuals with the full range of immigration matters, and develop immigration strategies that achieve their goals. See how your view of the world changes when you work with a firm totally focused on immigration.

AUSTRALIA

Alex Paterson, Partner
Fragomen (Australia) Pty Limited
APaterson@Fragomen.com, +61 2 8224 8540

Teresa Liu, Partner
Fragomen (Australia) Pty Limited
TLiu@Fragomen.com, +61 2 8224 8518

Chris Spentzaris, Partner
Fragomen (Australia) Pty Limited
CSpentzaris@Fragomen.com, +61 3 9613 9301

CHINA

Becky Xia, Partner
Fragomen (Shanghai) Co. Ltd.
BXia@Fragomen.com, +86-21-61829960

HONG KONG, TAIWAN, MACAU

Magdalene Tennant, Partner
Fragomen (Hong Kong) Ltd.
MTennant@Fragomen.com, +852 2151 2189

MALAYSIA

Guat See, Partner
Fragomen Malaysia Sdn. Bhd
GSee@Fragomen.com, +60 (0)3 2280 3699

SINGAPORE

Mark Buchanan, Partner, Asia
Fragomen Singapore Pte. Ltd.
MBuchanan@Fragomen.com, +65 6854 5174

Dalia Wong, Practice Manager
Fragomen Singapore Pte. Ltd.
DWong@Fragomen.com, +65 6854 5175

REST OF ASIA

Kenneth Lau, Director
Asia Pacific Coordination Center
Fragomen Singapore Pte. Ltd.
KLau@Fragomen.com, +65 6854 5168

FRAGOMEN
WORLDWIDE

Fragomen has more than 40 offices and serves more than 170 countries worldwide.

Visit www.fragomen.com.

3rd Runway for Hong Kong International Airport

To cater for rapid growth and passenger and cargo traffic



An aerial photograph of the Hong Kong International Airport terminal and tarmac. The terminal building features a distinctive series of arched, glass-roofed sections. Numerous aircraft are parked at gates, including Turkish Airlines, Air Canada, and Cathay Pacific. The foreground shows various airport buildings and ground service equipment. The background includes the airport's runways and taxiways, with a cityscape visible in the distance under a clear blue sky.

To accommodate future air traffic growth, Hong Kong's Airport Authority (AA) has put forward plans to expand Hong Kong International Airport (HKIA) into a three-runway system (3RS). The proposal details the strengthening of Hong Kong's status as an international aviation hub, as well as generating economic growth and extensive job opportunities. It was approved by the Executive Council in March this year.

Reaching Half of the World's Population Within Five Hours of Flying Time



* Source: United Nations 2013 data
 No.3 - The United States (0.32 billion)

Since its opening in 1998, passenger traffic, cargo traffic and air traffic movement have increased by 121%, 169% and 140% respectively. In 2014, the airport served 63.3 million passengers, handled 4.38 million tonnes of cargo and accommodated 391,000 air traffic movements (ATMs). Suffice to say that today HKIA has grown to become one of the world's busiest airports and has more than 100 airlines connecting to approximately 180 destinations worldwide, including 47 in mainland China.

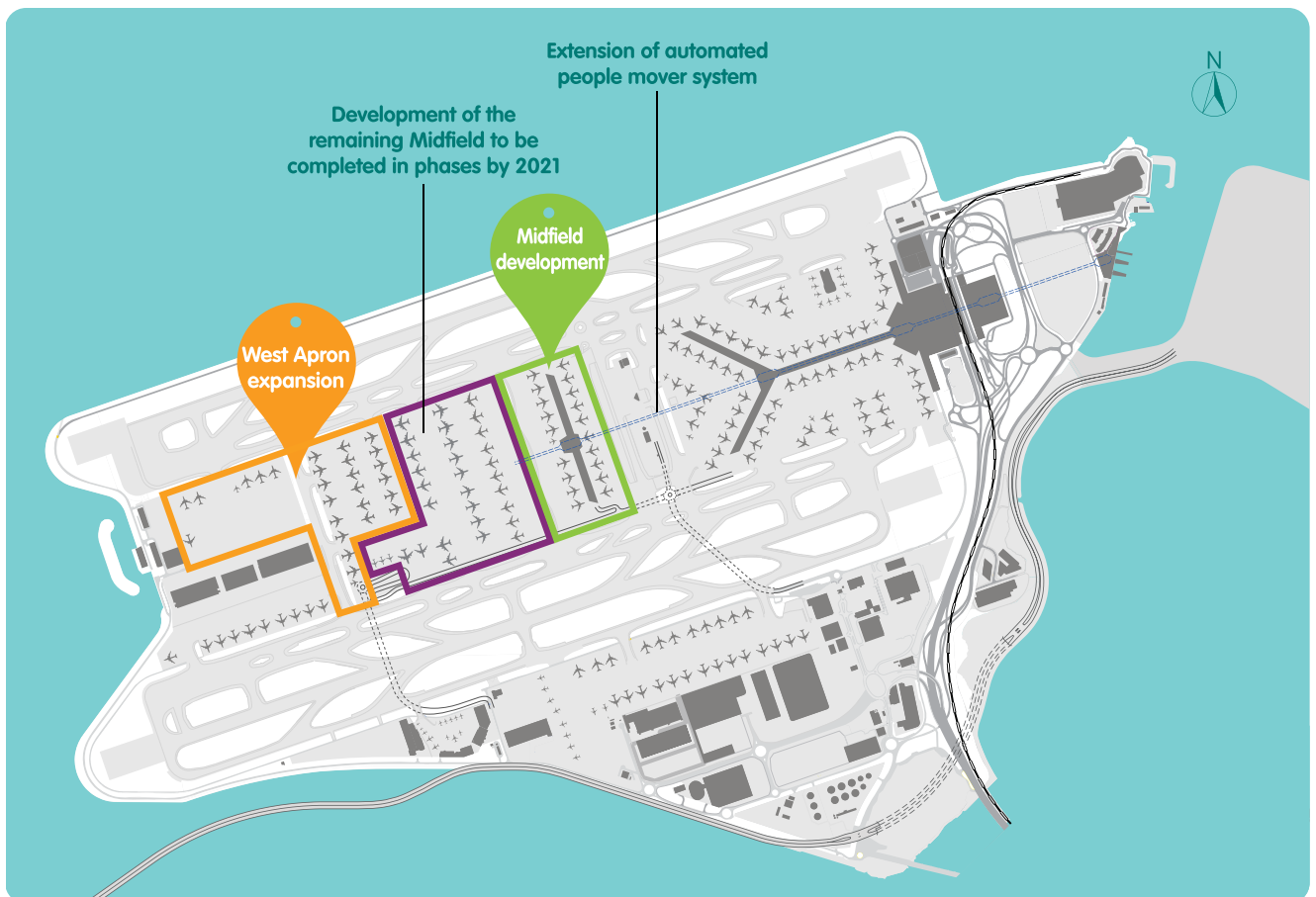
Indeed, further statistics from Hong Kong's Census and Statistics Department (2013) show that in 2012, the airport's direct, indirect and induced contributions to the local economy amounted to HK\$94 billion, representing 4.6% of the city's gross domestic product (GDP). The airport also supports Hong Kong's four economic pillars – financial services, trading and logistics, tourism, and producer and professional services – which, according to government statistics, together accounted for around 58% of GDP in 2013. The direct, indirect and induced employment made possible by HKIA represent over 4% of the city's total workforce.

With airport expansion set to create more business, more jobs and a more convenient service for 'Asia's World City', the advantages, not least the necessities, of a third runway are undeniable. And with rising traffic demand the current two-runway system is nearing capacity. Medium-term measures to meet traffic growth has seen Hong Kong's AA invest HK\$12 billion in new facilities. This includes the midfield development project, which will include a 105,000 square metre, five level concourse, 20 parking stands, and extension of the automated people mover (APM) system connecting the Midfield with Terminal 1 and other passenger facilities.

Investment has also been made into the expansion of the West Apron, consisting of 28 parking stands, a cross-runway vehicular tunnel linking to the cargo area in the south, and other related supporting facilities. Before any third runway project can commence in 2016, with completion estimated at 2024, the AA is also planning to enhance the capacity of Terminal 1 and its handling capacity of passengers and baggage. Upon completion of the Midfield development by the end of 2015, HKIA will be able to handle an additional 10 million passengers each year.



These measures can only help deal with medium-term air traffic demand. To meet the fast-growing passenger and cargo traffic in the long run, it is necessary to expand HKIA into a 3RS.



More Than Just a New Runway

Expanding HKIA into a 3RS is a lot more than building an additional runway. The project includes seven core projects and facilities as shown in the below map.



New Passenger Concourse and 57 parking positions

Floor area: **283,000 sq m**

Building a new passenger concourse with more than 280,000 square metres of floor area, a total of 57 new parking positions (frontal: 34, remote: 23) and an apron. The existing two-runway system (2RS) provides 86 passenger stands (frontal: 59, remote: 27). By the end of 2015, when the Midfield Concourse is completed, the 2RS will have an extra 20 passenger stands.



New runway

← **3,800m**

Building a 3,800-metre-long new runway and its supporting taxiway systems. The existing north runway will also be reconfigured.



Reclamation

650 hectares of land

Using non-dredge methods, including deep cement mixing technique

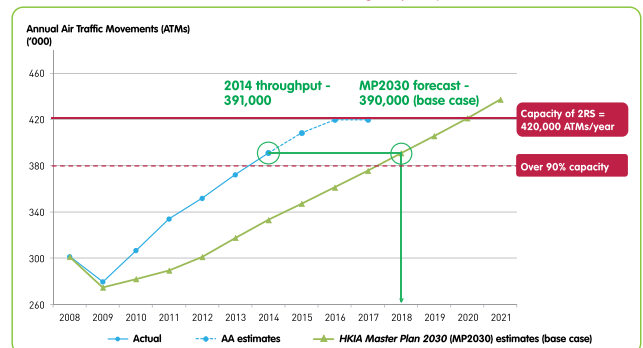
Equivalent to 34 Victoria Parks, or 100 artificial islands for the New Wing of Hong Kong Convention and Exhibition Centre.

Comprehensive road network and transportation facilities



Airport	Expansion Plan (year of completion)	Passenger Traffic Capacity (year)	Cargo Traffic Capacity (year)	Remarks
Seoul Incheon	Will construct a fourth (2020) and fifth runway, and a second terminal (2017)	62 million (2020)	5.8 million tonnes (2020)	
Singapore Changi	Will convert a military runway into a third runway (2020); and will construct a fourth (2017) and fifth terminal (2025)	135 million (2025)		
Guangzhou Baiyun	Will construct a fourth (2020) and fifth runway, and a second terminal (2018)	80 million (2020)	2.5 million tonnes (2020)	Third runway commissioned in February 2015
Shanghai Pudong	Will construct a fifth runway (2017)	80 million (2020)	4.7 million tonnes (2020)	Fourth runway commissioned in March 2015
Shenzhen Bao'an	Will construct a third runway (2018) and a fourth terminal (2025)	45 million (2020)	2.4 million tonnes (2020)	

2014 Air Traffic Movements Showed that 3RS is Urgently Required



Source: IATA Consulting estimates; the AA for actual statistics and estimates



New Automated People Mover system

Top speed: **80** km/h



Building a 2,600-metre-long new APM system connecting Terminal 2 with the new passenger concourse. This new APM system takes 2.5 minutes to travel from Terminal 2 to the new concourse. It can transport up to 10,800 passengers per hour.



New Baggage Handling System

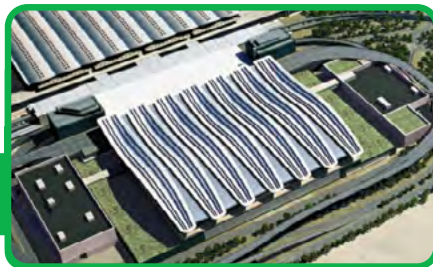
Baggage transport speed: **25 - 36** km/h



Building a new baggage handling system (BHS) linking Terminal 2 with the new passenger concourse. The new system will be able to transport the first baggage to the luggage belt within 20 minutes of passengers' arrival and the last baggage within 40 minutes – about the same amount of time currently required.

Expansion of Terminal 2

Providing arrivals, departures and full-fledged passenger services



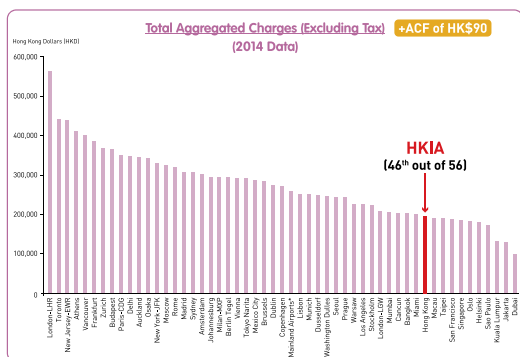
The expanded Terminal 2 and new concourse will be able to serve 30 million additional passengers annually as stated in the *HKIA Master Plan 2030*.

What is clear is that Hong Kong must maintain its competitive advantage as an aviation hub. With international air traffic expert IATA Consulting expecting the 3RS to allow HKIA to handle over 100 million passengers, with close to nine million tonnes of cargo and 607,000 ATMs, if a third runway is not built, supply of aviation services will undoubtedly fall short of demand. Within this scenario ticket prices are undoubtedly set to increase, with airlines focusing on more lucrative routes such as Seoul Incheon, Singapore Changi, Guangzhou Baiyun, Shanghai Pudong and Shenzhen Bao'an, all of which are currently expanding their facilities.

Expanding HKIA into a 3RS, however, is a lot more than building an additional runway. In addition to a new 3,800 metre runway and supporting taxiway systems, the project is set to include six further core projects and facilities:

- New passenger concourse and 57 parking positions covering a floor area of 283,000 square metres
- New 2.6km automated people mover system connecting Terminal 2, with a top speed of 80km/hour with the ability to transport up to 10,800 passengers per hour
- New baggage handling system (BHS) linking Terminal 2 with new passenger concourse
- Reclamation of 650 hectares of land
- Expansion of Terminal 2, providing arrivals, departures and full-fledged passenger services able to serve 30 million additional passengers (as stated in the HKIA Master Plan 2030)
- Additional and comprehensive road network and transportation facilities

Despite adding a HK\$90 ACF (short-haul economy origin-destination passengers), HKIA's ranking among 56 airports is still on the lower end



* Mainland Airports refer to Beijing, Guangzhou Baiyun, Shanghai Pudong, and Shenzhen Bao'an; All of which have the same charges for international flights. Source: Aeronautical Charges Benchmarking Study, LeighFisher (2015)



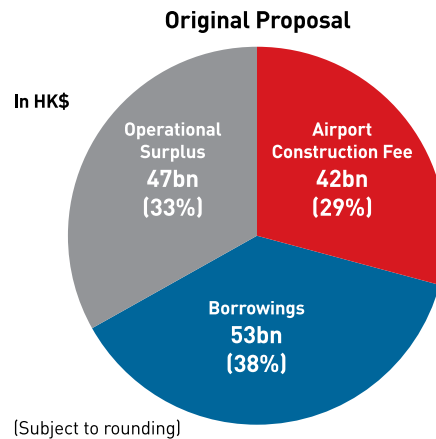
Information and images courtesy of Hong Kong Airport Authority



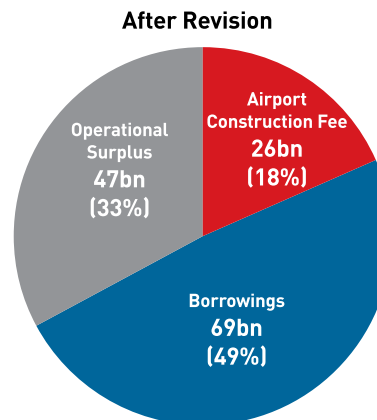
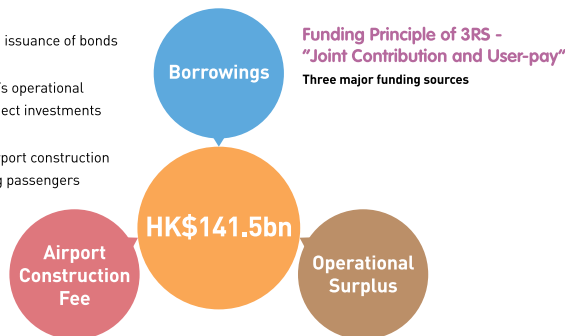
The scale of the 3RS project represents the largest and highest-budgeted construction in the city since the establishment of the Hong Kong Special Administrative Region (HKSAR). Total costs are estimated to reach HK\$141.5 billion at today's prices, a figure almost equivalent to building a new airport next to the existing one. That said, factors leading to the high cost include high local construction cost as well as construction taking place while the airport is in operation, and investment of up to HK\$22 billion in environmental protection measures.

Upon completion of the 3RS, HKIA is expected to serve 30 million additional passengers annually, according to the HKIA Master Plan 2030. The concourse facilities could be further expanded if necessary, which will help accommodate an additional 20 million in passenger traffic.

Comparison with Revised Financial Arrangement



1. Bank loans and issuance of bonds
2. Retaining HKIA's operational surplus for project investments
3. Charging an airport construction fee to departing passengers

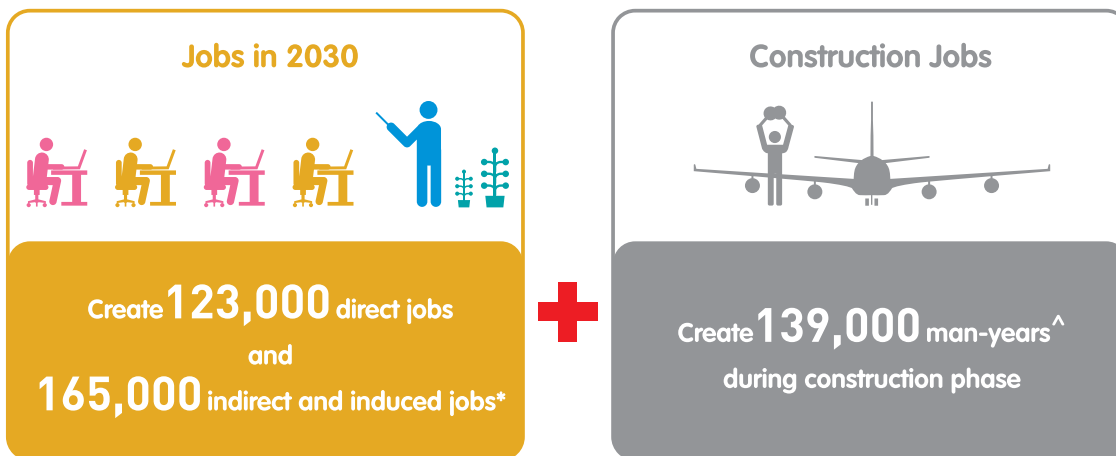


Based on the international experience that shows that investing in airports generates higher economic returns than other types of infrastructure, it is important to understand the economic implications of expanding HKIA. Indeed, in a 2015 study commissioned by AA, Enright, Scott & Associates (ESA) estimated that the 3RS would generate combined direct, indirect and induced contributions equivalent to 5% of Hong Kong's GDP forecast for 2030. Direct jobs associated with HKIA would reach 123,000 by 2030 and

indirect and induced jobs would increase to around 165,000. Further, under the 3RS, the airport's economic net present value (ENPV) up to 2061 is estimated to increase by HK\$455 billion compared to the ENPV of HK\$591 billion generated by the 2RS. In short, the 3RS will bring enormous economic benefits to the city.

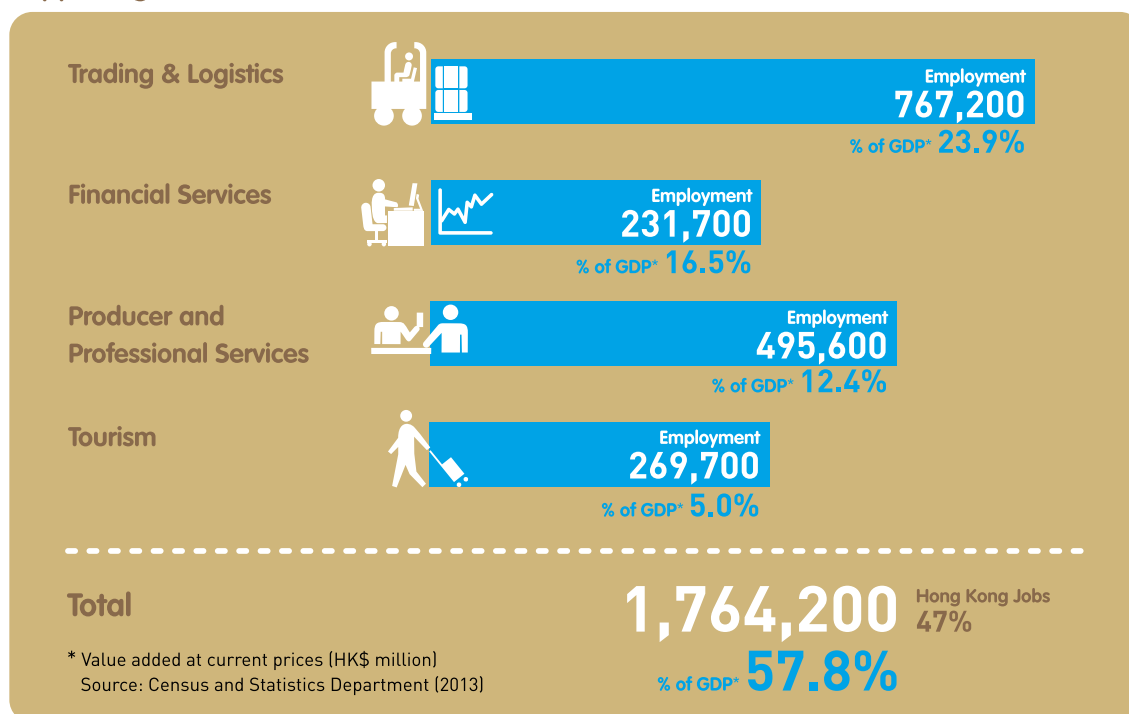
Environmental factors are also a key consideration of the 3RS project, with the AA committed to tacking its potential environmental impact.

Job Opportunities under 3RS



* Direct, indirect and induced value added
[^] A "man-year" is defined as one person employed full-time for one year
 Source: Enright, Scott & Associates Ltd (2015)

Supporting Four Pillar Industries



Season's Greetings

And best wishes for the new year from the partners and staff of Berwin Leighton Paisner*.

With legal experience stretching across every stage of the construction lifecycle and across three continents, you can continue to entrust us with your most important and complex infrastructure projects.



“
One of the leading
construction lawyers
in Hong Kong.”
Chambers Asia

www.blplaw.com/hongkong

*We practice in Hong Kong through Berwin Leighton Paisner (HK) LLP in association with Haley Tam & Co

For further information please contact :

Glenn Haley
Tel: +852 3143 8450
glenn.haley@blplaw.com

Ilan Freiman
Tel: +852 3143 8456
ilan.freiman@blplaw.com

Geoff Shaw
Tel: +852 3143 8457
geoffrey.shaw@blplaw.com





Ronacrete

Wishes all of our clients

***a Merry Christmas &
a Happy New Year***

Inside the hive mind

A complex, circular-shaped hub for learning in the 21st century takes aspects of technology, communication and education, combining them in a beehive of industry and modernity





A new building at Nanyang Technological University does away with corridors and classrooms to create a flexible learning environment that is pushing the boundaries of educational architecture.

The Learning Hub in Singapore provides 56 tutorial rooms without corners or an obvious “front” or “back” of the room. The building was opened in March after a three-year build.

The Learning Hub is 12 towers – built to a height of 8 storeys or 38.3 metres – each a stack of rounded tutorial rooms, tapering inwards at their base around a central atrium. The structure, with a gross floor area of about 14,000 square metres, is designed to interweave social and learning spaces into a dynamic environment that encourages more relaxed interactions between students and academics.

The new spaces support Nanyang’s “flipped classroom” theory that sees knowledge transfer from teacher to students online before classes. Contact hours in class are used for engagement in discussion and debate.

And the structure reflects the modern digital reality of education. The multi-function rooms are thought to drive interactive, small group teaching and active learning. Academics can configure them to better engage their students, and there are fewer barriers for students collaborating.

Rethinking Education

“The new Learning Hub provides an exciting mix of learning, community and recreational spaces for NTU students, professors and researchers from various disciplines to gather and interact,” says NTU senior associate provost for undergraduate education Kam Chan Hin. “By bringing people and their ideas together, NTU can spark future innovations and new knowledge that increasingly happen at the intersection of disciplines.”

The clustered seating in the new rooms is designed for students to discuss their ideas in small groups, before sharing and presenting their ideas with the rest of the class.

The building is part of Nanyang’s HK\$4.26-billion redevelopment of the university, the first in 20 years.

The work has been designed by Heatherwick Studio and executed by lead architect CPG Consultants as a part of the university’s redevelopment plan.

Practice principal Thomas Heatherwick says the most important commodity on today’s university campus is space that can be used in a social setting. “The Learning Hub is a collection of handmade concrete towers surrounding a central space that brings everyone together, interspersed with nooks, balconies and gardens for informal collaborative learning,” he says.





新創發展成員
Member of NWS Holdings



MERRY CHRISTMAS

AND
SINCERE WISHES
FOR A
HAPPY 2016



Service from the heart

Carrying an average of 10 million* passengers worldwide every weekday, the MTR operations now reach into other cities in mainland China and overseas, connecting and growing the communities with caring service.

* figure in 2014

caring for life's journeys



The building will stay opened until late, allowing students to gather, share knowledge and collaborate across disciplines. The Learning Hub is meant to reassert the role of an educational building in the 21st century.

Heatherwick established the practice in 1994 and has gone on to create a number of iconic works, from the British Pavilion at the Shanghai World Expo 2010, to the modernisation works of Pacific Place in Hong Kong, the Bund Finance Centre in Shanghai and the cauldron of the 2012 London Olympics.

Practical Matters

“Heatherwick Studio’s first major new building in Asia has offered

us an extraordinary opportunity to rethink the traditional university building. In this information age, the most important commodity on a campus is social space to meet and learn from each other.

Singapore’s building codes and Nanyang’s environmental aspirations meant that a concrete construction was necessary. To improve the aesthetics, stair and elevator cores have been embedded with 700 drawings cast into the concrete, referencing everything from science to art and literature.

Treatments on the external surfaces of the building lend the appearance of a project that appears to have been handmade from wet clay.

With high year-round temperatures in Singapore, the building’s





atrium is open and permeable. It is naturally ventilated, maximising the circulation of air around the towers of tutorial rooms. Each room is cooled using silent convection, doing away with the need for energy-heavy air-conditioning fans. Energy-efficient light and motion sensors have been placed in classrooms, toilets and staircases.

The design incorporates a generous amount of natural foliage, including internal vertical greenery and rooftop terraces. The reduction in solar glare and heat gain further minimises the need for active cooling. The Learning Hub building was awarded Green Mark Platinum status by the Building and Construction Authority of Singapore, the highest possible standard for a building of this type.

CPG Consultants are the lead architect and sustainability consultants for The Learning Hub. “The most exciting aspect of this project is to see such an inspired design develop into a uniquely contextual and functional building,” says CPG project lead Vivien Leong. CPG is a full service design consultancy that is the modern embodiment of the former Public Works Department of Singapore.

The former government department has a portfolio that includes terminals 1 and 2 at Changi Airport, the National Museum of Singapore and Gardens by the Bay, the striking indoor gardens on the city’s waterfront.

CPG was also the architect for Nanyang’s School of Art, Design and Media, a building that has been acclaimed for its distinct identity of three intertwining blocks, lush green roof and curtain wall.

Heatherwick studio



We're here to help when things don't go as planned.



Contract Dispute Consultants has built an impressive track record in resolving complex construction disputes.

Call us on **852 2470 6033** to see how we can help you.

Unit 1405, Bonham Trade Centre, 50 Bonham Strand, Sheung Wan, Hong Kong
t (852) 2470 6033 f (852) 2470 6133 e info@contractdispute.com.hk



www.contractdispute.com.hk

SEASON'S GREETINGS



TO ALL OUR PARTNERS IN CONSTRUCTION



ADR Partnership Limited
1711 Citicorp Centre
18 Whitfield Road
North Point, Hong Kong
t: (852) 2234 5228 f: (852) 2234 6228 e: info@adrpartnership.com

ADR | Partnership
Partners in Alternative Dispute Resolution
www.adrpartnership.com



*Season's
Greetings*

*The Partners and Staff of Deacons
wish you a Happy Festive Season
and a Prosperous New Year.*

Deacons' award-winning construction practice provides a high-quality, integrated service, tailored to our clients' specific requirements. We frequently advise a range of market-leading international and domestic employers, contractors and consultants, as well as financial institutions and government organisations in prestigious projects across the region. With well-established offices in Beijing, Shanghai and Guangzhou, we have deep roots in the regional markets.

For further information, please contact



Joseph Kwan, *Head of Litigation & Dispute Resolution*

Tel: +852 2825 9324

joseph.kwan@deacons.com.hk



Cheung Kwok Kit, *Partner*

Tel: +852 2825 9427

kwokkit.cheung@deacons.com.hk



Joseph Chung, *Partner*

Tel: +852 2825 9647

joseph.chung@deacons.com.hk



Solar Revolution

Australian households have taken to solar power generation in a big way with as many as every second home generating its own, sustainable power supply. What is happening in the Lucky Country that is making the solar revolution a solar-powered solution?

Feature courtesy of PRC Magazine : Text : Michael Hoare





In sunny Australia, it should come as no great surprise that there has been a rapid uptake of domestic solar-power generation. This abundant resource is being tapped by at least one household in every five to create electricity or create hot water.

Australia leads the world in having the highest number of individual installations of solar panels, with the number of rooftop systems in use rising from 8,000 in 2007 to more than 1 million in 2013. Solar power usage is as high as 51 percent of households in Browns Plains in outer suburban Brisbane, followed by 46 percent of households in Mandurah, a densely populated seaside area south of Perth.

Power generated by photovoltaics (PV), the technology and semiconducting materials to convert solar energy into direct current electricity, have also been installed on a number of major public buildings, and commercial-scale PV power plants are in operation. By 2013 the price of photovoltaics was less than half the cost of using grid-generated electricity in country of the 23 million people and the total electricity-generating capacity of the solar sector in Australia now stands at 4,200 megawatts.

Construction companies in Australia and the retro-fitting industry that has sprung up are using a technology that is increasingly cost-effective, environmentally-friendly and practical due to emerging storage technologies.

Tariff-Driven Development

Government incentive schemes, feed-in tariffs in some states and territories, soaring electricity prices and a drop in the cost of solar panel production in Australia have all contributed to the uptake of PV power.

The Australian government has set a 20-percent mandatory target for renewable energy generation by 2020. Feed-in tariffs for electricity generated by solar PV systems see a premium paid to producers, effectively funding the rollout of PV systems on a broader scale.

At the University of New South Wales, researchers are looking into integrated building systems, developing low-carbon precincts and how to engage communities.

The Co-operative Research Centre on Low Carbon Living is also engaged in investigating innovative options for reducing the costs of introducing solar power systems. One team is currently focused on solar taking solar into the mainstream. Their research on next-generation products includes a unique photovoltaic-thermal system, roofing materials that double as solar panels and heating devices.

The centre's director, Professor Deo Prasad, said the built environment was responsible for about 40 percent of Australia's energy use, and homes account for 16.5 percent of emissions from electricity generation. He says the biggest opportunity for emissions reductions were in buildings.

"Solar power is increasingly becoming the energy source of choice in buildings in Australia," he says. "Coupled with energy efficiency this

clearly is not only the lowest carbon option but also becoming the most cost-effective with equivalent of A\$.15 per KWh – this is what they call grid-parity price.

“This has resulted in a steady decline in utility level demand for grid electricity. When coupled with onsite storage many homes in Australia should be able to go net zero energy over the next few years.”

Storage Upside

While costs are falling and awareness improving, storage has traditionally been seen as the bottleneck for solar power. Professor Prasad said consumers were becoming increasingly aware of modern storage technologies, such as the Tesla battery system, which was also contributing to the uptake of solar power.

The Tesla ‘Powerwall’ is a home battery that charges using electricity generated from solar panels, or when utility rates are low, and powers a building in the evenings. It also provides a backup electricity supply.

Home storage systems are significant factor in alleviating the traditional limitations of solar power which used to be a deterrent to uptake.

“Home level storage systems help align solar generation with peak demand and hence are good for householders as well as utilities,” says Prasad. “Storage at precinct scale and network scale are also emerging and will enable much better optimised energy generation and demand management in the future.”

District Distribution

Prasad says Australia, after a slow start, was seeing a rapid uptake of solar in buildings and that solar at a whole precinct, or neighbourhood, level was also becoming quite an effective solution in Australia.

“This coupled with TriGen-type technologies (which combine cooling, heat and power) allows rapid decarbonisation of the electricity sector,” he says.

The centre’s research is currently focusing on building integrated solar with thermal energy capture, which, when deployed effectively for heating, cooling and other needs of buildings, makes the business case even stronger, he said.

The photovoltaic-thermal system has regular solar cells on the surface which double as a heating device. Hot air is caught underneath the panels and piped into the building.

A prototype has already demonstrated the system can produce a 25 degree Celsius air flow throughout winter. The technology also cools solar panels at the same time, improving solar cell efficiency and overall generation.

The team are also working on a thermally-driven air conditioner which would use heat from solar panels to recharge a system that takes moisture from the air, a vital part of air conditioning, particularly in a humid climate.

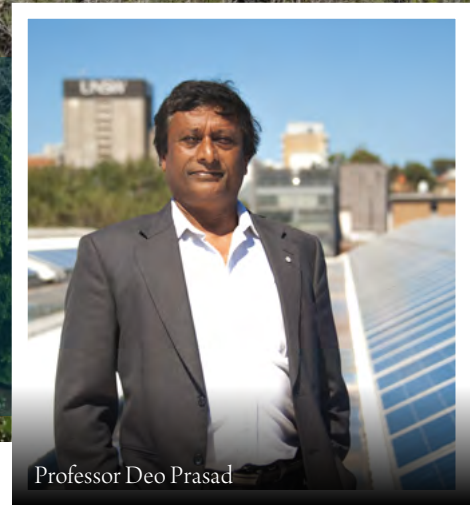




Background On The Image UNSW Energy Building –

The \$123.5 million Tyree Energy Technologies Building (TETB) has been designed to provide a space where research, education and industry can collaborate to develop and then practically implement sustainable energy technologies.

The TETB has received a 6 Star Green Star Design rating, awarded by the Green Building Council of Australia, making it the fourth 6 Star education facility in Australia and a first for UNSW. This accreditation represents world leadership in environmentally sustainable building practices.



Professor Deo Prasad

Off-Grid, On-Trend

While solar panels are an increasingly common sight on rooftops across residential areas, Australian architects are showing that design does not have to be sacrificed for utility.

Charles Wright Architects’ award-winning Stamp House is a cantilevered concrete, carbon-neutral house which was built off-the-grid on a wetland site in Cape Tribulation, Far North Australia with no connection to services of any kind.

Wright, an Australian architect with offices in Melbourne, Port Douglas and Shanghai, said the property was built within open grassland pastures between swamp wetland and beachfront rainforest. The design had to factor in the environment which included potential for cyclones, king storm tides and flooding.

“Our clients liked the idea of enhancing and reintroducing the original wetland character of the site before the filling and cattle grazing use,” he says. “They had a strong desire to develop a sustainable and robust estate which would ideally operate as carbon neutral in its off-grid location.”

Wright said the cantilevered, cyclone-proof structure was sited over an engineered water eco-system as a way to intent on enhancing the site’s natural wetland attributes and beauty.

“We consciously designed a prototype for tropical living, wherein the voids of the section and the incisions in the plan continually generate shade and ventilation ... the airflow is balmy and constant, the daylight bounces in from the lake and the pool, and any non-tempestuous rainfall serves as a pleasantly diverting cooling device,” he says.

Waste Not

Wright said the project was carbon neutral in operation – the building generates all renewable energy, harvests and recycles rainwater and treats all waste.

“We wanted all energy to be renewable and non-reliant on fossil fuel generation. The rooftop solar panel and inverters PV array is a 18 KW system with an extensive battery and back-up storage facility located in the undercroft,” he said.

“The different colour tone observed to the roof elements is a ceramic compound coating providing insulation achieving an R4+ rating to the coated areas of concrete. All other areas are insulated internally within wall cavities using foil and bulk insulation.

“The masterplan for the site looked at utilising the grassland areas to protect and maintain all rainforest vegetated zones. We also used existing access driveways and upgraded them with re-surfacing as required, with any new portions in approach to the house and garage located within cleared grassland pastures.”

Wright said also key to the sustainability focus was a detailed engineering response to issues of water supply and treatment of waste, which included gaining government permits to draw from local water supplies for irrigation.

“Water harvested from the roof runs back through cast-in and lagged downpipes in the central harvesting tank, sanitary drainage and power are also coordinated in detail for every bespoke beam arrangement,” he said.



HFV'S GLOBAL CONSTRUCTION TEAM IS HERE TO HELP

Holman Fenwick Willan is an international law firm assisting contractors, consultants and government in the construction, engineering and infrastructure, and allied sectors.

We focus on a range of projects in Asia, Australia, Middle East and Europe, including large infrastructure projects such as a rail and bridges, ports and terminals, energy, mining and commercial developments. Our lawyers advise on:

- Construction contract preparation, contract review and tender processes
- Construction insurance
- Contract administration and claims
- Professional indemnity claims
- Construction disputes including adjudication claims

For further information about how we can help your business, please contact:

Nick Longley

Partner
Hong Kong/Melbourne
T: +852 3983 7680/
+61 (0)3 8601 4585
E: nick.longley@hfw.com

Vincent Liu

Partner
Hong Kong
T: +852 3983 7682
E: vincent.liu@hfw.com

Colin Dodd

Consultant
Hong Kong
T: +852 3983 7681
E: colin.dodd@hfw.com

Amanda Davidson

Partner
Sydney/Singapore
T: +61 (0)2 9320 4601/
+65 6411 5300
E: amanda.davidson@hfw.com

Matthew Blycha

Partner
Perth
T: +61 (0)8 9422 4703
E: matthew.blycha@hfw.com

Lawyers for international commerce

hfw.com

Macau 10 years old

The Lighthouse Club Macau celebrated their tenth anniversary in October and a celebratory Golf Day and Dinner were held on 16 October. The day was very successful and our generous sponsors ensured that more than MOP160,000 was raised for the LCM benevolent fund.

The golf tournament was held at the Orient Golf Club on nearby Hengqin Island.

The results were:

1st Place

ISG Asia / BYME Engineering (Macau) Ltd

2nd Place

Lai Si Construction & Engineering Company Ltd

3rd Place

Circle Engineering Co. Ltd – “Team of Glory”

Our sponsors were - Top Builder Group, BYME Engineering (Macau) Ltd, Tong Lei Engineering and Construction Ltd., Circle Engineering Co Ltd, Pine Wood (F.E) International, Min Da Construction & Engineering Company Ltd, PHM Engineering (Macau) Co. Ltd, Lai Si Construction & Engineering Company Ltd, Sun Ming Sang Construction & Engineering Company Ltd, San Fong Seng Construction & Engineering Company Ltd and Sinryo Corporation.



The barbeque/buffet dinner was held on the Sala pool deck of the Sheraton Hotel at Sands Cotai Central, Macau.

Due to the success of the event we intend to make Golf Day an annual event.

The Lighthouse Club Macau now 239 members, including 26 corporate members and 126 individual members and our membership continues to grow.

We have continued our monthly social functions which continue to be generously sponsored and also provide a platform for fund raising.

The monthly function was held in November at Venetian, Café-Deco sponsored by Willis (Hong Kong) Ltd. Forthcoming events will be held in December sponsored by Tong Lei Engineering and Construction Ltd. and in January sponsored by Sika Hong Kong Ltd.



Lighthouse Club Macau Anniversary – 10 years assisting families of fatal construction accident victims

by Paulo Barbosa

The Lighthouse Club Macau, a locally registered construction charity that provides financial assistance to the families of workers involved in fatal construction-related accidents, is celebrating its tenth anniversary this week. Tomorrow, a golf tournament will be played by twenty teams in Hengqin to celebrate the club's anniversary. Following the tournament, which also doubles as a fundraising event, the golfers will return to Macau for a dinner on the Sheraton pool deck at Sands Cotai Central.

Since its inception, the club has supported 44 cases of either construction-related fatalities or serious injuries, eight of which have occurred in Macau this year, the club's chairman Keith Buckley, 67, told the Times. The deaths which had occurred in local construction sites have typically been a result of "a high level of construction activity and a relatively unskilled workforce," he adds.

The charity raises funds either through sponsorship deals or by holding regular functions. Unlike in Hong Kong, where there are some major donors, in Macau the donors are either sponsors of the club's events, club members, or contractors. The club has two types of membership –

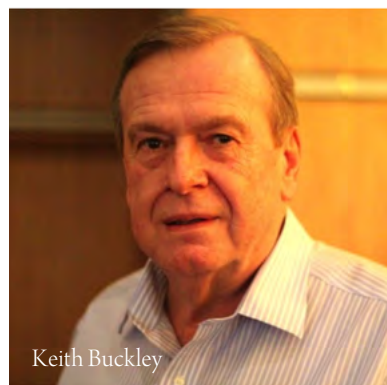
individual and corporate –

and around 230 members.

The Lighthouse Club channels the money raised at functions to a "benevolent fund" administered by a committee. Whenever there is an accident, the group meets to analyze the details of the accident and the affected worker's personal circumstances. For example, the worker's marital status and whether or not they have children are areas of consideration. After this assessment is done, a donation is made.

"Sometimes the insurance company takes a long time to pay. We do a quick payment to the family," Mr Buckley explains. The donation amount ranges between MOP30,000 to MOP40,000. But there are also cases in which the support is used to pay the school fees of minors directly affected by the tragedy. In those cases, regular payments are made over a number of years.

The club is also planning to introduce other types of support, like offering beneficiaries the opportunity to enroll in construction related degrees. "We haven't started it yet, but we have some ideas, because the money in our fund is quite good," the club's chairman says.



Keith Buckley

Another plan currently being considered is the establishment of a system to recognize local companies as proactive supporters of safety in the industry. In other branches of the club, a "Golden Helmet Award" is awarded to companies, an idea that could be replicated in Macau.

A British citizen, Keith Buckley has vast international experience. He has been the chairman of the local club for the past four years and is also the chairman for the Asia-Pacific region in 2015. As the executive project director of Hsin Chong Engineering (Macau) Limited, he has been involved in the construction of Sands China's projects in Macau and took part on the raising of the Cotai strip, an area which was previously flooded with water.

Mr Buckley recognizes the major construction projects currently undertaken in Macau are "very large, technically challenging and built on a fast-track basis," all posing challenging safety issues, although the situation has since improved.

"This year, for example, I expected to hear of more fatalities, because the place is booming. But when I first came to Macau, which was in 2003, the standards of safety were low. On the original Sands, we tried to develop quite a strong safety scheme and then I heard that some of the workers didn't want to work on our site because the safety rules were so strong. Now that's not a problem. If you go in the [construction] sites, I think nearly 100 percent of the workers wear safety helmets," the chairman explained.

Nevertheless, safety problems persist. In the early years of construction in Cotai, many workers came from Hong Kong, where the construction sector was suffering due to the SARS epidemic. Since the neighboring region had higher safety standards than Macau, the

construction works were less problematic. The situation changed and now most of the workers come from Macau and mainland China.

According to Keith Buckley, the Chinese workers are “not very old, lack construction experience, and so are not very well educated in safety. We see some very bad things on site. When a worker joins one of our sites, he has to have a safety induction; he is told what to do and what not to do. But still you must have some desire to protect your life. It is not good enough for me to say ‘don’t do this, don’t do that’, you must understand what is dangerous.”

He further stated that accidents happen “because to join the construction industry is quite easy” and consequently “workers are not educated in safety and their basic safety knowledge is inadequate.

Many of the accidents are caused by the individual, not because there is inadequate lighting, or safety railings, it’s usually because the worker commits an error. It can be something like running down the stairs to get the bus and falling because the stairs on a construction site are not like the stairs in a finished building, they are rough,” Buckley observed,

adding that one of the areas with lower safety standards is probably the most dangerous, which is putting the façade on the buildings.

The fact that the major projects in Macau tend to be built at a faster pace also hinders safety, because “contractors are under pressure to finish in time, and when you put people under pressure, they may take risks. Of course we don’t tell them to take risks and cut corners, but sometimes they do,” often as a means of saving time.

Regarding the assistance usually issued to those directly affected by accidents in Macau, Mr Buckley noted that in order to obtain a construction license from DSSOPT, employment compensation insurance is needed. The insurance policy has limits, but the fact that all workers are insured makes the framework here better than those in other Asian jurisdictions, where the workers are not necessarily insured.

Macau Daily Times article regarding the LCM 10th anniversary.
<http://macaudailytimes.com.mo/lighthouse-club-macau-anniversary-10-years-assisting-families-of-fatal-construction-accident-victims.html>



Kuala Lumpur Charity Climb - From tragedy to triumph

On the 5th of June 2015, a massive 6.0 magnitude earthquake hit the East Malaysian state of Sabah, the biggest earthquake to occur in Malaysia since 1976. Eighteen climbers on Mount Kinabalu at the time of the quake lost their lives, including a number of school children and mountain guides, whose families' livelihood depended on climbing tourism. There were over 62 resulting aftershocks between 1.6 and 5.2 in magnitude. The base camp and popular non-peak hostel Laban Rata suffered structural damage and have been closed for the foreseeable future. Surrounding areas such as Ranau have suffered due to the damage to access roads and as a result have needed emergency supplies, particularly water distribution.

With the tragedy occurring a mere ten days before the Lighthouse Club Kuala Lumpur volunteers were due to climb, the team were tasked with making arrangements which would still honour the Lighthouse Club and its values, as well as completing a physical activity as promised to both individual and corporate sponsors. The team contacted charities in the area, including the Mount Kinabalu park association to seek out volunteering opportunities. Despite their best efforts, the team were unfortunately unable to visit Mount Kinabalu at all, due to the majority of the damage occurring some distance up the mountain- too dangerous for those who had not climbed before. With this in mind, the team looked towards charities and causes where they could really make a difference in the Sabahan community.

The Lighthouse Club Kuala Lumpur would like to thank all of our generous sponsors; CTE limited, Gregrep, BK Asia Pacific /Proforce / Entrusty, Plus Three Consultants, Tan Swee Im & Partners, Techsolco, Tony Gee and Partners, Debra Tye, AGS Four Winds and all of our individual sponsors for their selfless understanding in the aftermath of the quake. Without your support the resulting charity trip could not have occurred.



The three volunteers able to make the trip were Anjelica Catling, Sabrina Thakur and Emily Dyas who came from Plus Three Consultants, Techsol and Tan Swee Im, P.Y Hoh & Tai respectively. After arriving in Kota Kinabalu they travelled to Kota Marudu- a township 125km from Kota Kinabalu. Anjelica, Sabrina and Emily spent two days at Skycommunity Hostel- where 34 school children

from rural areas or disadvantaged families are provided with a place to sleep, eat and receive tuition to help with school and bible study.



Without a place to live near the two government schools which the students attend- many would not have access to standardised formal education, or would not receive any education at all, instead working in rural communities from a young age. Due to the overwhelming need for hostels like Skycommunity, students who apply must meet a minimum grade requirement, in order to maintain a work ethic at the hostel which focuses largely on peer support and development. Up to eight students share one small bedroom at the hostel, bunk beds fill the rooms with only enough space to slide between them. Due to the small amount of free space, the students are only permitted a few personal belongings; items like clothes, shoes, books and uniform are shared amongst everyone.

The hostel relies entirely on donations, save for a small monthly fee which the children pay to be associated with Skycommunity. Every day student 'teams' within the hostel prepare four meals for all 34 students, clean the house and surrounding grounds as well as help and encourage each other through study. The children wake up at 4:30am to prepare a cooked breakfast and packed lunch before they leave for school- and those who do not have afternoon classes come back to prepare dinner. After 'supper' the children were busy practicing in their own orchestra- the result of a generous donor a few years ago for the instruments- in preparation for a number of performances this summer. After a brief discussion and dinner, every student sits down for two hours of study time- before heading to bed at around 10:30pm. It is an extremely long day for all of the students, but their hard work pays off- many of the form five and six students are achieving 80% or above in their STPM subjects.

The volunteers gave two evening English study sessions with the form five and six students in preparation for Malaysian University English Test (MUET) examinations. The students identified conversation and speaking as their weakest skill, so after a few pointers on grammar and past/present tense, the girls ran 'role play' exercises where teams of two or three created various scripts such as visiting a restaurant, going shopping and booking a package holiday. The 'actors' had to incorporate a range of selected vocabulary such as

'reservation', 'recommendation', 'luxurious' etc. as well as at least five different questions per script. They were then given feedback after the performance to help them understand correct phrasing and how to improve their conversation skills. It was surprising to hear that despite an element of MUET being a speaking exam, all of the students agreed they had never practiced English in this way, or spoken English outside of the questions given in the textbook.



The incredible couple who run the hostel, 'Uncle Frederik & Auntie' were married the day before they came to live at and manage the hostel... married with 34 kids! They are loved by all of the students and work tirelessly to provide the best life that they can for those who live there. They are parents, tutors, advisors and orchestra conductors, to name a few! Frederik spent a number of years in the UK and in West Malaysia as a civil

engineer, before returning to Sabah to be closer to family, where he practiced as a project manager and consultant. When he was made aware of the hostels' re-opening (it had previously been closed due to poor management) he realised that this was an opportunity to devote his life to these children who needed it the most, and admits he has never regretted the decision.

A number of students who came to live at the hostel when it re-opened six years ago have gone on to college and university, and this is the dream for many, the majority of which are 'grade A' students. The volunteers had a chance to give a talk to the whole hostel about their own careers in engineering and law, as well as a bit about applying to university and living abroad. The students were eager to ask questions about choosing a degree, applying and what motivates the volunteers to pursue these careers. A popular point of discussion was 'girls don't do engineering' - and how passionately this view was discouraged!

"From waking up as early as Sam and having a non-stop action packed day which included school, cooking, cleaning, after school studies and instrumental

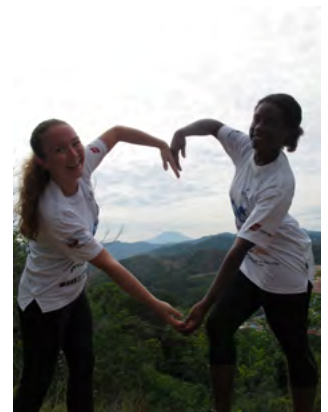


practice, it was incredible to see how much energy the students had by the end of the night - especially as we were probably more tired at the end of each day than the students! Teaching English was a joy because all the students were so eager to learn and didn't shy away, particularly when we were practicing English orally with them." - Sabrina Thakur

After two incredible days at Skycom, it was time to return to Kota Kinabalu. After speaking with the Mount Kinabalu parks association, unfortunately the park would not be open to climbers even for short treks at the base or visits into the park grounds for the foreseeable future. Eager to honour their side of the bargain, the volunteers sought out an alternative climb to the summit of Bukit Padang, a popular training ground for those attempting the mountain. The three hour hike to the summit resulted in amazing panoramic views of both Kota Kinabalu and Mount Kinabalu in the far distance. With temperatures reaching a whopping 38 degrees by midday, the trek was by no means a replacement for the mountain expedition, but a challenging substitute nonetheless.

"The deadly earthquake that occurred as we were preparing our trip to Sabah shattered my dreams of climbing Mount Kinabalu this year. However, our weeks of training in the gym and trekking around suitable trails around Kuala Lumpur were not wasted. We were able to find a substantial alternative - Bukit Padang. Bukit Padang is an infamous training route for Mount Kinabalu climbers. Although it was a mere fraction of the height of Kinabalu, we chose the hardest of the six available trails which when coupled with scorching temperatures of 35°, provided some challenge to our hike. At the peak of Bukit Padang there was an unexpected surprise - a clear view of the majestic Mount Kinabalu. I felt a slight pang of sadness not being able to climb Mt. Kinabalu but still grateful we were able to see its beauty." - Anjelica Catling

The current situation in Kinabalu Park is that mountain climbing to Laban Rata has resumed as of 1st September of 2015, while the trail to the summit is expected to be opened by 1st December 2015. Despite the cancellation of the climb our sponsors stayed committed to sponsor this charity trip that has raised over RM 35,000 for the Lighthouse Club Kuala Lumpur. The final balance can only be made up once all refunds have been received. It is both sponsors requests and Lighthouse Club Kuala Lumpur idea to look also for suitable projects around Kinabalu Park, and especially those families that have been affected by this unusual natural disaster in Malaysia.



Bursary

Thank you Lighthouse of Kuala Lumpur for funding me this scholarship. I was grateful and honoured to be the recipient of this scholarship.

I am currently studying Quantity Surveying and I have just begun the second trimester of my first year course. It has always been my passion to be involved in construction sites since I was a little girl. Thank you MBAM and Lighthouse Club Kuala Lumpur, I am one step closer to that goal.

Because of your generosity, I can spend more time on my studies, research and extracurricular activities and less time worrying about my finances. I would also like

to equip myself with soft skills like leadership, communication skill by taking part actively in extracurricular activities.

With this award, the financial burden of pursuing my course is lessened on my family which allows me to focus more on my studies. I will work hard to honour your scholarship commitment. However, your generosity has inspired me to help others and give back to the community. I hope one day I will be able to help others achieve their goals just as you have helped me.

Thank you again.
Li Jun



Kuala Lumpur committee

President

Roderick Noble

Vice-President

Stephen Healey

Treasurer

Lim Ling Ling

Secretary

Bert de Munck

Assistant Secretary

Clarise Low

Ordinary Committee members

Evan Ho

HT Ong

Anthony Edwards

Ravendran Rasalingam

As at 31 October 2015

the Lighthouse Club KL has 84 members and 5 corporate members.

On 4 3 September 2015

LHC KL had our Monthly Get Together in "El Sid's". The evening was sponsored by IPEC Systems.

On 1 October 2015

LHCKL had our Monthly Get Together in "El Sid's", which was sponsored by Tony Gee and Partners.

On 5 November 2015

LHC KL's Monthly Get Together was held in "El Sid's" and Megalift was the sponsor of the evening.

On Thursday 3 September 2015

our last Monthly Get Together was organized in "El Sid's" and sponsored by IPEC Systems

Agenda Lighthouse Club KL:

Saturday 14 November 2015
Annual Dinner at KLRCA

Thursday 3 December 2015
Monthly Get Together

Thursday 7 January 2016
Monthly Get Together

Thursday 17 February 2016
Chinese New Year Get Together
sponsored by
BK Burns & Ong / Entrustly



Golf Day – Plus 3 Claret Jug held 24th October 2015

The Annual LHC Golf Day took place on hazy Saturday afternoon at the Templer Park Golf Club, there were 14 full flights i.e. 56 participants which included 4 ladies. The main competition for the day was 2 man team Better Ball Stableford where the best point score from the team was taken on each hole accumulated to achieve winning score.

There were some interesting team names – Duncan Disorderly, Murphy Tazz Stout to name a few, and with participation of the ladies it was decided to have a mini individual Stableford compo for them which was closely fought with Lim Ling Ling winning by 2 points (27), followed by Vanessa (25), Amanda (24) and Jenny (23).

The Main Competition “The Plus 3 Claret Jug” was won by team “The Stags” – Gordon Anderson (h/c 22) and Bob Boyd (h/c 9) on 46 points followed on a count back by “Real Stags” (Jim Stevenson/William Watt) and in 3rd place “Stags” (Anil Tenula /Louis Shepard).

There were the usual novelty prizes:

- Longest Drive**
won by Louis Shepard – a monster 345 yds.
- Nearest to the pin (Par 4) with 2nd shot**
William Watt
- Straightest Drive (nearest to the line)**
100 mm - Dr Tan
- Nearest to the Pin (Par 3)**
Mike Scott
- The Worse Golf**
Tony G: Bill Addington/Evan Ho

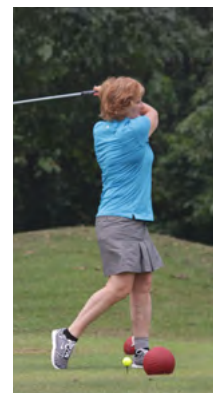
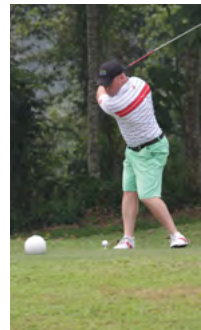
This 2015 LHC Golf day has been one of the most successful and the club would like to thank its main sponsors:

Plus 3, Asian Tigers, Turner Townsend, Hill International, Driver Trett, Eastlink, Pullman Hotels who gave a compliment one night in Prince Hotel and several individuals who donated prizes.

It also has to be said that without the support of several golf societies in particular Stags, Sags who contributed a third of the participants to the competition the numbers would have been significantly reduced as for LHC KL had a disappointing number of participants, it also has to be said some of the sponsor fielded 3 flights too on behalf of LHC KL thank you and especially the Stags who dominated the prizes and returned the compliment by contributing heavily to the raffle and one particular individual who won the “one night” returned it back to be auctioned off.

Thanks must also go to Nicky and her staff at Templer Park Golf Club who without their help the day would have not run so smoothly and thanks to both Rachel and Ling Ling for their assistance.

We are already looking forward to next year’s Golf Day where will try to be as successful as this year. However LHC KL hope to see more LHC Members participating next year.



Singapore News

Following on from the fun and frolics that was the summer Golf Tournament, the Singapore branch got all fast and furious with the annual F1 event in Singapore. This has been an eventful period for the Singapore branch with the usual selection of social events to raise funds for the branch coffers as well as a number of events that have contributed significantly to raising the profile of Lighthouse Club both within the industry as well as to the broader Singapore society.

November saw the annual dinner and dance being held at the Tanglin Club, with the great and the good from Singapore's construction industry decked out in their finery for an evening of dinner dancing and general entertainment. Nuala and RaHa did a fantastic job pressing the crowd for raffles tickets; with prizes including a staycation on Sentosa and a number of golf related prizes. Then there was Eric... who kindly donated his incense burner... clearly he has another career ahead of him as a motivator at auctions; as he did a fantastic job of securing a generous price.

It was great to seem a number of people recognized for the substantial effort that they have made and continue to make to the work of the club, especially Willie Kay for the work that he also carries out in the region and Raha and Graham in Singapore.

A number of exciting events are still planned for the coming months; these include the Christmas Party, on 10th December, where members will enjoy a very special 12 days of Christmas. This is also an opportunity for members to donate toys which will be donated to one of the local children's hospitals

The Lighthouse Club Singapore has continued its fundraising efforts through a variety of avenues, the backbone of which remains the monthly meetings, kindly supported by our sponsors and attended by a growing number of members keen to promote the Club's work in Singapore. These are held on the second Thursday of every month.

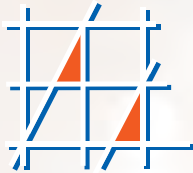
Support continues to be given to needy individuals both in Singapore and the region. As well as those who have been injured in industrial accidents. We are also continuing to strengthen our link with Transient Workers Count Too (TWC2) as an avenue to connect with those that are in need of our support.

Plans are already being formed up for next year, with the majority of the venues already secured for the monthly gatherings. Another amazing race is planned for March and of course the annual golf tournament in August.





Season's Greetings



**ASPECT
ASIA**

Chartered Quantity Surveyors
Construction Consultancy Services

Aspect Consulting Asia Ltd

Units A & B, 10/F Neich Tower, 128 Gloucester Road, Wan Chai, Hong Kong

Tel: +852 2827 6068 Fax: +852 2827 6168

E-mail: info@aspectasia.com.hk Website: www.aspectasia.com.hk

Willis

Managing Risks and Employees' Benefits for the Construction Industry

- Risk Profile surveys and marketing reports
- Risk identification, assessment and mitigation
- Business Continuity Planning and Management
- Enterprise Risk Management & Crisis Management
- Independency and Supplier dependency analysis
- Due Diligence, training, benchmarking

Willis Hong Kong Limited

18/F, Lee Garden One | 33 Hysan Avenue | Causeway Bay | Hong Kong | Tel: +852 2827 0111 | www.willis.com



**Building relationships with
our local communities
through our association
with the Lighthouse Club.**

**KING & WOOD
MALLESONS**
金杜律師事務所

The Power of Together

Best wishes for the festive
season from the construction
team at King & Wood Mallesons.



Paul Starr
T +852 3443 1118
paul.starr@hk.kwm.com



Edmund Wan
T +852 3443 1119
edmund.wan@hk.kwm.com



David Bateson
T +852 3443 1018
david.bateson@hk.kwm.com



Richard Lyons
T +852 3443 1138
richard.lyons@hk.kwm.com



Rachel Chan
T +852 3443 1146
rachel.chan@hk.kwm.com

www.kwm.com



Ho Chi Minh City News

Social Events

The monthly Networking Events for 2015 will be/have been held on:-

DATE	LOCATION	SPONSOR
08-Oct	The Orient	Hilti – the venue was painted their corporate red!
13-Nov	The Orient	Sika
13-Dec	The Orient	AIM

Membership

We continue to increase the list of paid up members

Fundraising Events

The annual Christmas Dinner is planned for 27th November at the Intercontinental Hotel

The inaugural Annual LHC Ho Chi Minh City Construction Charity Golf Day is planned for 11th December at the Vietnam Golf and Country Club

Sponsorship

LHC HCMC is actively seeking more corporate sponsorship for events

Benevolent Activities – How the funds are spent

Saigon Children's Charity – We have continued our sponsorship of 5 children from low income families into its 2nd year. This allows them to continue their tertiary education in construction related fields.

HCMC University of Architecture – 4 students are still being sponsored through college, and they are now in their 3rd year.

New sponsorship – Bao's father worked as an electrician on construction sites until he was badly injured in a motorbike accident and was unable to support his family. Bao recently passed his entrance exams and is now studying Material Engineering at the University of Technology. We have been pleased to be able to pay his tuition fees and provide him with a living allowance so that he can continue his studies.

Proposed Activities – The committee continues to discuss internships for students and recent graduates, office and site visits, safety seminars and vocational courses.



Malcolm Poole conducting the LHC audience in Orient Bar



Bao (far right) and his family

Manila Report

The fundraising successes of 2014 resulted in a significant increase in the uncommitted funds available in Manila. This coupled with the ongoing support of JBET and the APR have resulting in an increase in the number of students (31) the club is now supporting, as well as providing medical assistance on a case by case basis where possible.

The success of the monthly social events, normally held on the 3rd Thursday at The Marriot Hotel has continued throughout 2015. Company sponsorship has been obtained for each event, and themed evenings such as quiz nights and the pool party have been particularly successful. The dynamics and profitability of these evenings improve with the number of attendees, and it remains a focus of the Board of Trustees to find ways to ensure a minimum of 50-60 attend each event.

As in previous years the major fund raising event is the Annual Event held in November. After the success of the Formal Black and White Ball held in 2014; the Event's Committee led by Amanda Parker, ably supported by Arelene Abelardo-Elliot, Elisa Thoburn and Me-anne Manuel, decided that the 2015 event which was held in the Grand Ballroom of the Marriot Hotel on 7th November 2015 would be a Rodeo. The event was attended by around 350 people and from the focal centerpiece of the Saloon, complete with Barrel tables, mechanical bull and mock up barn, to the final dance the evening was a great success.



**SAVE
THE DATE!**
Saturday, 12th November 2016

20th
ANNIVERSARY

Annual Charity Event

Sponsorship was provided by many companies including the cactus plants and shot glasses on the tables, the pre-dinner refreshments, the wonderful raffle prizes, and the live entertainment. Special thanks must go to the following who were all recipients of recognition awards presented on the evening:

- Diamond Sponsors Etihad Airways for providing the top three raffles prizes of pairs of economy class tickets around the world.
- Platinum Sponsors RMD Kwikform for their ongoing financial support and DeeConcrete who provide the wonderful band Replay, complete with dancers for the evening.
- The team from TKHS who provided the most fantastic logistical support from warehousing to transportation.

The raffle and the auction, which this year was augmented by the services of Helping Hands Auction Group, were both well supported and funds raised by the evening is PHP 750,000.



"Amanda, congratulations to you (and your team) to yet another phenomenal, outstanding job for Saturdays Rodeo party - was a hit and so well organized.

Cheers and look forward to next years party.... :-)"

Guenther Taus

"I fully reiterate Guenter's sentiments. Fantastic work by you and your team, the event was outstanding and everyone told me how much they enjoyed the night.

The whole event was seamless, so we do all appreciate how much effort you put in to bring it all together."

Samuel Powell -

Just a short note to say thank you and your team for such a great event last night. My guests and I thoroughly enjoyed the evening. The food was excellent, the band - brilliant and the banter unforgettable!

Looking forward to next year!

Julian Smith



"Although I don't really remember that last couple of hours, this event was really great and we all had a great time. Well done for putting on such a great event!"

Samuel Wilson



THE CONTRACTS GROUP LTD

COMMERCIAL, CONTRACTUAL & MANAGEMENT CONSULTANTS TO THE CONSTRUCTION INDUSTRY

WE WISH ALL OUR CLIENTS, FRIENDS AND
COLLEAGUES ALL THE BEST FOR A VERY

Merry Christmas & Happy New Year

EXECUTIVE DIRECTORS:

CHRIS MORGAN • COLIN B. LEE • PETER L. K. TANG

Tel : (852) 2529 1696, Fax: (852) 2866 2725, Email : info@contractsgrouppltd.com, Web : www.contractsgrouppltd.com

Let's talk.



Plus 3 sends its warmest wishes to all our clients, friends and families for a peaceful and joyous Christmas and New Year.

Plus 3 helps put your construction projects back on track and back on budget, across Asia.

So, after the holidays, give us a call and let's talk.

For more, visit us at www.plus3.com.my.

Malaysia Plus Three Consultants (M) Sdn Bhd
Contact: Michael McIver
Suite B-3A-12, Block B, Plaza Mont' Kiara,
No. 2, Jalan Kiara, Mont' Kiara, 50480 Kuala Lumpur.
Tel: +6 03 6201 0996 E-mail: kl@plus3.com.my

Hong Kong Plus Three Consultants (HK) Ltd
Contact: Stephen Tennant
Suite 901, Level 9, The Hong Kong Club Building,
3A Chater Road, Central, Hong Kong
Tel: +852 2851 2528 E-mail: hk@plus3.com.my

Hogan
Lovells

Blueprint for success

For over 30 years we have helped clients successfully complete projects across Asia

We wish you all an enjoyable festive season and look forward to supporting your projects in 2016!

Key Contacts

Hong Kong

Timothy Hill, Partner
timothy.hill@hoganlovells.com

Damon So, Partner
damon.so@hoganlovells.com

China

Terence Wong, Partner
terence.wong@hoganlovells.com

Japan

Patric McGonigal, Partner
patric.mcgonigal@hoganlovells.com

Joseph Kim, Partner
joseph.kim@hoganlovells.com

Singapore

Alex Wong, Partner
alex.wong@hoganlovells.com

Approximately 2,500 lawyers / 45+ offices / 25+ countries

www.hoganlovells.com

Hogan Lovells is an international legal practice that includes Hogan Lovells International LLP, Hogan Lovells US LLP and their affiliated businesses. Images of people may feature current or former lawyers and employees at Hogan Lovells or models not connected with the firm.

www.hoganlovells.com

© Hogan Lovells 2015. All rights reserved.



Young Members Group Joint Happy Hour Drink

On the 24th of September in Hong Kong, the Lighthouse Club Young Members Group and the Urban Land Institute Young Leaders Group came together for a joint networking "happy hour" drink in Central, Hong Kong.

The Lighthouse Club Young Members Group Hong Kong focus on creating events that are aimed at embracing networking, fundraising and fellowship within the construction industry. Towards this aim, the Young Member Group is organising monthly happy hour drinks where they invite other institutes to expand their network. For this event, the Young Members Group teamed up with the Urban Land

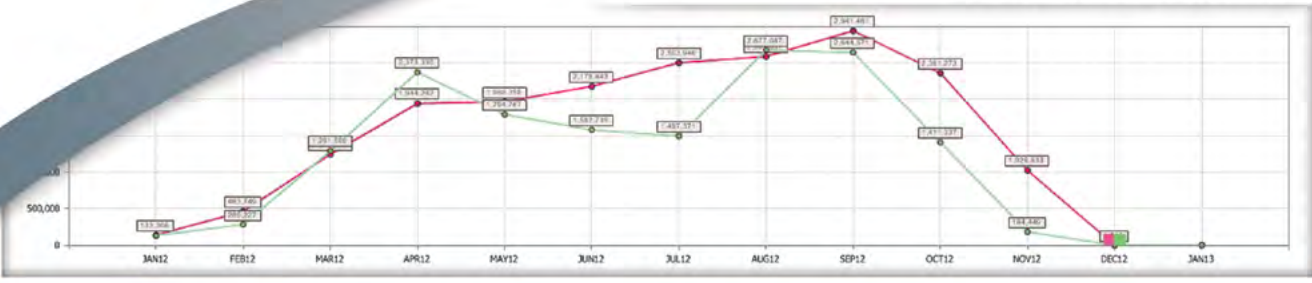
Institute Young Leaders Group, to organize an exciting networking get together.

The event was well attended, fun and vibrant. Douglas Wu, the vice chairman from the ULI Young Leaders Group and Prasad Ekanayake, the chairman of LHC Young Members Group both introduced their respective institutes.

Many thanks to Chun Wo Holdings and Urban Land Institute who generously sponsored this event.



Where will your project be tomorrow? + Earned Value & Forecasts



...Does everything your ERP system does not do.

Ask us about:

Project Management Project Accounting
Document Management Workforce Management

Projection Group... We Own, Develop and Deliver.

www.projection-group.com

Hong Kong: +852 2973 6243
Australia

Philippines: +63 917 559 6525
Hong Kong Philippines

Email: info@projection-group.com
Middle East

Building Value for Sustainable Cities

Over six decades of solid experience has given Paul Y. Engineering a strong reputation as a leading construction and engineering services group in Hong Kong. We have been at the heart of some of the most challenging and impactful construction projects that have shaped the iconic skylines of Hong Kong and many other Asian cities. We serve our valuable client-base by delivering the full spectrum of integrated solutions, from concept to completion and ongoing management. Building value for sustainable cities is the key to our success.

Building Construction / Civil Engineering / Foundation / E&M Services / Fitting Out





Bringing
structures
to life

- RMD Kwikform Asia Pacific provides innovative, productive and safe formwork, shoring and scaffolding systems.
- We are part of a worldwide company that provides a high level of technical and sales support coupled with the latest generation formwork and shoring systems.
- Our extensive product range enables us to provide the best solution to assist you with your next project.
- Our Sales Team consult with their customers to provide the best solution at a competitive price and they provide support throughout most aspects of the project.
- Our renowned engineering capability enables us to work together with our client's construction team to develop, design, and detail cost-effective engineered solutions that are practical, productive and safe.

RMD Kwikform Philippines, Inc

Units 2406-2409 Raffles Corporate Center,
F. Ortigas Jr. Ave., Ortigas Center,
Pasig City, Phils. 1605
Tel: +632-696-7635
Fax: +632-661-6456
E-mail: rmd.philippines@rmdkwikform.com

RMD Australia

66 Bennet Ave, Melrose Park
Adelaide, South Australia 5039
Tel: +61 8 8179 8200
Fax: +61 8 8179 8201
Email: rmd.australia@rmdkwikform.com

RMD Kwikform Hong Kong Ltd.

22/F, Excel Centre,
483A Castle Peak Road,
Cheung Sha Wan, Kowloon
Hong Kong
Tel: +852 2415 4882
Fax: +852 2745 0232
Email: rmd.hongkong@rmdkwikform.com

RMD Kwikform Singapore Pte Limited

29 Tanjong Penjuru (S)
609026 Singapore
Tel: +65 6863 4252
Fax: +65 6863 4275
Email: rmd.singapore@rmdkwikform.com

Lighthouse Club - Asia Pacific Region Sponsors

Aedas

ADR | Partnership
Partners in Alternative Dispute Resolution



AON
Empower Results®



BESTJOIN

BIMS
Group Limited

BK Asia Pacific

BERWIN LEIGHTON PAISNER



俊和發展集團
CHUN Wo DEVELOPMENT HOLDINGS LIMITED

CLYDE & CO
其禮律師行

coins
Construction Industry Solutions



DEACONS
的近律師行



FRAGOMEN

F T I
CONSULTING



Gammon

GOLIK
高力集團

HILL
Hill International



協興
HIP HING
新創建築集團成員
Member of NWS Holdings



howden

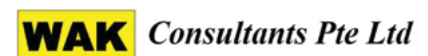


KING & WOOD
MALLESONS
金杜律师事务所



MAYER · BROWN
JSM

MinterEllison





SEASON'S GREETINGS

and Best Wishes for the New Year from
the Global Construction Practice team
of Navigant

The Construction team's services include:

- » Quantum & Delay Experts
- » Claims Preparation
- » Project Scheduling
- » Dispute Resolution
- » Training & Seminars

Navigant is a globally based consultancy and provider of specialist dispute resolution services which includes Forensic Accounting; Insurance Claims; Global Investigations & Compliance; Legal Technology Solutions and Financial Risk Management.

ASIA LOCATIONS »

Hong Kong Office

Suites 2901-2904
Dah Sing Financial Centre
108 Gloucester Road
Wanchai, Hong Kong
+852 2233 2500

Singapore Office

460 Alexandra Road
#22-05 PSA Building
Singapore 119963
+65 6276 9050
asia@navigant.com

navigant.com

CONTACTS »



Garry Crossley
Managing Director
gcrossley@navigant.com



Jon Prudhoe
Managing Director
jon.prudhoe@navigant.com

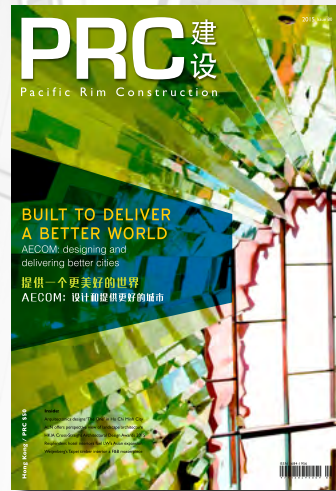
NAVIGANT
CONSTRUCTION

100% committed to serving the local building industry

EDITING

ROF Media is the only Hong Kong based Media Group focused solely on building and construction. Our services include the development of individual tailor-made solutions through to the design and production of entire publications. All to aid dynamic communication.

ONLINE



DESIGN

PRINTING



PHOTOGRAPHY



STAY IN TOUCH
Subscribe to
ROF MEDIA
E-Newsletter

ROF Media

+852 3150 8988
info@rofmedia.com
www.rofmedia.com



WE HAVE THE TOOLS TO BUILD YOUR FOUNDATION

At Allied World our expertise and range of coverage for the construction industry includes:

- Erection All Risks (EAR)
- Contractors All Risks (CAR)
- Third Party Liability (TPL) in conjunction with C/EAR cover and stand alone
- Advance Loss of Profit (ALoP) in conjunction with C/EAR cover
- Construction Employees' Compensation (Con – EC)
- Environmental Impairment Liability (EIL)
- Projects of all sizes and types – Innovative Risk Solutions

HONG KONG CONTACTS

Construction – EC
Owen Davis
owen.davis@awac.com
+852 2968 3253

Construction & Engineering
Jacob Hewitt
jacob.hewitt@awac.com
+852 2968 3307

Construction – TPL & EIL
Ian Oviden
ian.ovenden@awac.com
+852 2968 3077



This information is provided as a general overview for agents and brokers. Coverage will be underwritten by an insurance subsidiary of Allied World Assurance Company Holdings, AG ("Allied World"). Such subsidiaries currently carry an A.M. Best rating of "A (Excellent)." Coverage is only offered through licensed agents and surplus lines brokers. Actual coverage may vary and is subject to policy language as issued. Risk Management services are provided or arranged through AWAC Services Company, a member company of Allied World. © Allied World Assurance Company Holdings, AG. All rights reserved. November 2015.

alliedworldinsurance.com