



the Lighthouse

Events | Fundraising | Industry News

Summer 2016

Lighthouse Club Asia Pacific Celebrates 30 Years in Asia

明建會

The Lighthouse Club Asia Pacific Region

Australia | Cambodia | Hong Kong | Macau | Malaysia | Philippines | Singapore | Thailand | Vietnam



Aliis Cum Humanitate



Serving the world's community with the highest level of dedication

From our base in Hong Kong, the MTR Corporation has steadily expanded overseas. With operations in Shenzhen, Beijing, Hangzhou, Stockholm, Melbourne and London, we are serving communities and connecting people in these cities with the same level of dedication and heartfelt service that you enjoy in Hong Kong.

caring for life's journeys





Hong Kong International Airport (HKIA) has a global network covering over 190 destinations worldwide, including 47 in the Mainland. HKIA is one of the busiest aviation hubs in the world which handled 68.5 million passenger trips and moved 4.38 million tonnes of cargo in 2015. HKIA is committed to sustainable growth and development, and aspires to be the finest in the world.



www.hongkongairport.com

Land of *Success*

Built on a tradition of partnership, integrity and excellence since 1889, our prestigious commercial and luxury retail properties are landmarks of success in Asia's leading cities.

www.hkland.com



 **Hongkong Land**

 **俊和發展集團**
CHUN WO DEVELOPMENT HOLDINGS LIMITED

Build
a better future
with **TRUST & COMMITMENT**



Proposed Commercial Redevelopment at Jaffe Road, Causeway Bay, Hong Kong



Central-Wan Chai Bypass: Tunnel (North Point Section) & Island Eastern Corridor Link



Wan Chai Development Phase II: Central-Wan Chai Bypass at Hong Kong Convention and Exhibition Centre

Your Trusted Partner in Construction



Founded in 1939, Hsin Chong is one of Asia's longest-standing construction and property groups, providing comprehensive construction, property and related services. Over its rich history of experience, Hsin Chong has taken part in a wide range of major and high profile construction and infrastructure projects in and outside of Hong Kong.



Hsin Chong Group Holdings Limited

Hsin Chong Center, 107-109 Wai Yip Street, Kwun Tong, Kowloon, Hong Kong

T +852 2579 8238 | F +852 2516 6596 | www.hsinchong.com | info@hcg.com.hk



Designated Workers for Designated Skills Effective from April 2017

Unregistered Skilled Workers are Forbidden from Carrying Out Skilled Works*

「專工專責」2017年4月生效
沒有技工註冊 禁止在地盤做工種工作*

DEADLINE
截止日期: 30/9/2016



Workers with 10+ years' skilled work experience
Senior Workers Registration Arrangement

10年或以上工種經驗 資深工人註冊安排

Direct registration through
verification of work experience
(one-off special arrangement)

核實年資 直接註冊
(屬一次性安排)

☎ 2873 1911

Workers with less than 10 years' skilled work experience
Apply for trade tests

少於10年工種經驗 報考工藝測試

Pass trade test to register as a skilled worker
(Applicants passing trade tests will be offered
cash allowance on a first-come-first-served basis)

通過測試 註冊技工
(測試合格, 可獲津貼, 名額有限, 先到先得)

☎ 2100 9000



* Except works under "Instruction and Supervision" and "Exempted Works".
「指示及督導」下工作及「豁免工作」除外。

Chairman's Message

I would like to start my year in office by thanking my predecessor Keith Buckley for his work as Chairman over the past year. Keith now becomes Immediate Past Chairman and we will continue to work together to develop Lighthouse Club, Asia Pacific Region (LHC, APR).

The year ahead will mark significant milestones and map out a new way forward in the development of the Club.

In Hong Kong the Club has celebrated its 30th Anniversary with a series of events which you will see covered throughout this edition.

In UK the 60th Anniversary of the Club is being marked by visits to Canary Wharf and Crossrail, a Cocktail Reception, an International Conference and a Gala Ball.

About The Lighthouse Club

The Lighthouse is the magazine of the Lighthouse Club Asia Pacific Region, which was established in 1998. The Lighthouse Club was originally established in England in 1956 and first came to Asia in 1986 with the formation of a Branch in Hong Kong.

The aims of the Lighthouse Club worldwide are to promote good fellowship amongst its members who work in or are associated with the construction industry and to provide charitable assistance to those in need within the construction industry and to their dependents in qualifying cases.

The Lighthouse Clubs that were in existence in 1998 in Asia agreed to the formation of the Lighthouse Club Asia Pacific Region with the following objectives:

- To support and where necessary co-ordinate the work of charitable assistance undertaken by the branches of the Lighthouse Club within the Asia Pacific Region
- To promote the establishment of further autonomous branches of the Lighthouse Club in the Asia Pacific Region
- To promote good fellowship between the members and branches of the Lighthouse Club in the Asia Pacific Region

Official website : www.lighthouseclub.asia
The Lighthouse is online at www.issuu.com/rofmedia

 The Lighthouse Club Asia

A number of committee members from APR will participate and any member who is in London over 7th to 9th July will be made most welcome.

2016 will see a major step forward for the LHC, APR as it morphs into LHC International with the objective of developing the Club in new countries and enhancing support to existing Clubs.

2016/17 APR committee meetings are proposed in Bangkok, Singapore, Manila, Hong Kong and Australia and I look forward to meeting local members on each occasion.

I would like to end by noting the appointment of John Battersby as Honorary Life Chairman of APR. The award recognizes the huge contribution John has made over many years to the LHC in APR and is well deserved. I congratulate John and thank him on behalf of the whole of the Lighthouse Club.

Bob Park
Chairman
The Lighthouse Club,
Asia Pacific Region



In addition to the charitable works of the individual branches of the Lighthouse Club, the Lighthouse Club Asia Pacific Region has two related Hong Kong based charities which provide charitable assistance throughout the Asia Pacific region:

- The James Battersby Lighthouse Club Educational Trust which provides assistance for education and training to qualifying young persons
- The Lighthouse Club Asia Pacific Region Benevolent Trust which provides assistance to relieving poverty and financial need to persons currently or previously employed in the building and civil engineering industries and allied trades where such persons and/ or their dependents are suffering hardship as a result of accident, disability or ill health.

For more information and membership / sponsorship enquiries please contact the Membership Secretary or Deputy Chairman of the Lighthouse Club Asia Pacific Region at lighthousehk@gmail.com. To advertise in this magazine please contact publisher@rofmedia.com or lighthousehk@gmail.com

The Lighthouse Club Asia Pacific Region
Suite 1901-2, Hopewell Centre,
183 Queens Road East, Wanchai, Hong Kong

Tel : +852 2736 9885
Fax : +852 2687 2252
lighthousehk@gmail.com

Administrator : Elaine Man

Editorial Committee :
Mike Atkin / Vincent Connor / Steve Tennant
John Battersby / Mike Staley / Elaine Man

Publisher : Mike Staley
E : publisher@rofmedia.com
T : +852 3150 8988

Advertising : Bryan Chan
E : bryan@rofmedia.com
T : +852 3150 8912

Designer : Parnell Chan

Published by ROF Media

APR Executive Committee

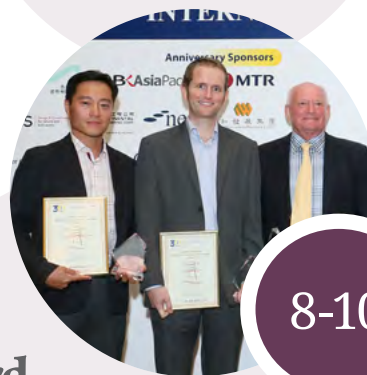
Chairman
Bob Park
bobpark@rmparkconsulting.com
Immediate Past Chairman
Keith Buckley
keith.buckley@cotai.venetian.com.mo
Chairman Elect
Rod Noble
roderick.noble@39essex.com
Deputy Chairman
John Battersby
johnbattersby@bkasiapacific.com
Secretary
Steve Tennant
stevetennanthongkong@gmail.com
Treasurer
Phil Clarke
phil.clarke@cotai.venetian.com.mo
Membership Secretary
Jim Chessell
jchessell@bkasiapacific.com
Bangkok
Gareth Hughes
gareth.hughes@rsmthailand.com
Ho Chi Minh City
Colin Johnston
cjohnston@bkasiapacific.com
Hong Kong
John Battersby
johnbattersby@bkasiapacific.com
Steve Tennant
stevetennanthongkong@gmail.com
Bob Park
bobpark@rmparkconsulting.com
Kuala Lumpur
Bert de Munck
bert.demunck@plus3.com.my
Macau
Keith Buckley
keith.buckley@cotai.venetian.com.mo
Manila
Guenter Taus
guenter.taus@jec.com
Phnom Penh
Euan Ritchie
ritchie@artisansurfacefinishes.com
Singapore
George Wall
gwall@asgardprojectsolutions.com
Jim Chessell
jchessell@bkasiapacific.com
Australia
Paul Roberts
Paul.Roberts@aquenta.com.au
Nick Longley
nick.longley@hfw.com

In This Issue



Design for Safety Award

The inaugural International Design for Safety Award and Lighthouse Club International Cocktail Reception rounded out a successful week of celebrations in Hong Kong



8-10

Features

- 33 Pomeroy Studio announces completion of pioneering carbon-negative house
- 36 Tower cranes pivotal to construction of cable stayed bridge in Bay of Cadiz

Regional Branch Updates

- 41 Hong Kong
- 44 Kuala Lumpur
- 49 Singapore

Sponsors

- 56 Lighthouse Club Asia Pacific Region Sponsors 2016

Events

Calendar of forthcoming member's events July to September

International Construction Conference

Held over two days in May, The International Construction Conference combined themes including caring construction, collaborative contracting and continuing professional development



11-13

Dazzling Masquerade Ball Lights Up the Convention Centre

A highlight event of 2016, the 30th Anniversary Lighthouse Club Ball was a spectacle of colour and excitement for the hundreds of mask-wearing revellers



18-29



The Lighthouse Club
The Construction Industry Charity
Celebrating 30 Years in Asia

INTERNATIONAL COCKTAIL RECEPTION INTERNATIONAL DESIGN FOR SAFETY AWARD



A celebration

30 years in the making

A celebration 30 years in the making, the Lighthouse Club International Cocktail Reception and first International Design for Safety Award was an unqualified success, rounding out a week of celebrations in Hong Kong.



As the club has developed to become a pillar of the construction industry in each of the communities in which it operates, these awards are destined to become an important part of both.

The awards evening on May 27 was hosted by the club's Hong Kong branch and saw the Hong Kong government's Deputy Director of Housing for Development and Construction at the Housing Authority, Ada Fung, present the top awards. Ms Fung, an architect who is also chairman of the Construction Industry Council Safety Committee, is a former winner of the Golden Helmet Award for her services to safety.

The International Design for Safety awards were born out of a desire to raise awareness of the role of the designer in safety, and to highlight exemplary designers that consider the people working at the sharp-end of the industry.

The leading award from the evening was given to Ted Lawton, the Engineering Development Manager at Gammon Construction. Mr Lawton claimed the inaugural award for putting into place a combination of civil engineering and mechanised construction to provide a safe working site by applying jump forms for the construction of large buildings.

The design significantly reduces the labour involved and so cuts the amount of time workers are exposed to a potentially dangerous situation. The design removes the risk of falls from height, finger traps as well as a greatly reduced need for cranes on site.

Other presentations were made to Arup's Simon Pickard, for mitigating significant health and safety risks on the M+ Museum site in West Kowloon, Ken Ko Wing Nin at Chun Wo, David Law at Aurecon and Paxson Chan at Arcadis.

The entries were of a uniformly high standard, which made the work of the volunteer judges even more difficult than expected. The club would like to thank Hugh Wu, Steve Rowlinson, Duncan Inglis, Mark Divers, Steve Tennant, Lewis Cheung, Brenda Yip, Mark Gibbon and Daron Leung for their efforts in judging.

The evening's official welcome at the event was made by John Battersby, the Chairman of The Lighthouse Club Hong Kong Branch and Deputy Chairman of The Lighthouse Club Asia Pacific Region.



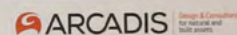
The Lighthouse Club
The Construction Industry Charity
Celebrating 30 Years in Asia

INTERNATIONAL COCKTAIL RECEPTION INTERNATIONAL DESIGN FOR SAFETY AWARD

Anniversary Sponsors



Award Sponsor



Anniversary Sponsors





It was significant that Mr Battersby had such an important role. The event celebrated 30 years since the Lighthouse Club Hong Kong Branch was formed, in 1986, and 60 years since the Lighthouse Club was formed in Britain. Mr Battersby is of course central to the club's operation and himself a driving force in the club's development in Asia.

In his speech, he had the important task of thanking outgoing Chairman Hugh Wu after 22 years of service and welcoming newly elected Deputy Chairman Cordia Yu.

"It is 20 years, almost to the day when I stood in this room and welcomed some of you to the first ever international gathering of The Lighthouse Club," Mr Battersby told the evening's guests. "That was in 1996 when the then President, Ian McAlpine, and the former Chairman of the Club in Britain, Martin Roddy, who is with us again this evening, joined us for that special occasion."





A Meeting of Minds

The International Construction Conference was a two-day event surrounding The Lighthouse Club's 30th Anniversary events in late May. The event, held on May 26 and 27 at the Hong Kong Convention and Exhibition Centre, had combined themes of caring construction, collaborative contracting and continuing professional development.



While there were several conference themes, the over-arching idea was to deliver continuing professional development opportunities for individuals seeking to build on their own capabilities and be better prepared to deal with the challenges facing the construction industry internationally.

Delegates and other construction industry members made the most of the opportunities for personal and professional networking throughout the two days.

The opening sessions on the first day began with a grand opening keynote by Carrie Lam Cheng Yuet Ngor, the Chief Secretary for Administration in the Hong Kong Government. In her 27 years as an administrative officer, Mrs Lam has served in various bureaux and departments. She was Director of Social Welfare from August 2000 to October 2003, Permanent Secretary for Housing, Planning and Lands (Planning and Lands) from November 2003 to May 2004, and Director-General of the Hong Kong Economic and Trade Office in London from September 2004 to March 2006. She was Permanent Secretary for Home Affairs before assuming the post of Secretary for Development.

Attendees were then treated to a presentation by Douglas Oakervee, a British construction industry legend, who compared his experience in Europe and Hong Kong when it comes to delivering quality infrastructure projects. Mr Oakervee was formerly the chairman of the Crossrail railway project linking London's east, England's southeast and Heathrow. In Hong Kong, he was the Project Director of Provisional Airport Authority.

Kevin Poole, Executive Director, Third Runway, The Airport Authority Hong Kong, offered a survey of 60





years of development of Hong Kong's International Airport from Kai Tak Extension to 3RS at Chep Lap Kok.

President of the Hong Kong Institution of Engineers, Chan Chi Chiu, was also among the headline speakers, delivering his insights into 40 years of developing engineering as a profession in Hong Kong. The presentation also touched on emerging roles for engineers and issues involved in continuing development.

Additionally, Mark Wiltshire, Engineering Manager, Project C901, Kier-Laing O'Rourke-Kaden; Robert Gordon, Director – Infrastructure, Asia, Arcadis; and Christopher To, the Executive Director of the Construction Industry Council, made significant presentations.

No less important, the second day began with Philco Wong, Projects Director, MTR Corporation Limited, discussing sustainability; saw presentations by Seved Robin, Project Director of the Tuen Mun- Chek Lap Kwok Link – Northern Connection Subsea Tunnel project for Dragages, and Ada Fung, the Deputy Director of Housing for the Hong Kong Government, and Ted Lawton, Engineering Development Manager



at Gammon Construction offer his award-winning leadership on site safety.

During the concurrent breakout sessions and on-site presentations, contractors, suppliers, specialists, consultants, law firms and other construction service suppliers, offered unique insights into the construction industry. Collaborative contracting through Target Cost and NEC by Stephen Hamill, Project Manager-WIL, MTR Corporation, Staley Lo, Direct and General Manager, Paul Y and Robert Pegg, Battersby Kingsfield" and "30 years of development of the Professional Quantity Surveyor and the Future Role of the PQS in the Continuing Development of HK by Paul Wong, Chairman, Quantity Surveyor Division, HKIS



44
TH
ANNIVERSARY OF
HIP HING
CONSTRUCTION



COMMITTED,
PROFESSIONAL
AND UNITED

THE HIP HING SPIRIT



協興
HIP HING

新創建集團成員
Member of NWS Holdings



NEC Accreditation Suite

The NEC Gold Standard

ECC Project Manager Accreditation
ECC Supervisor Accreditation
TSC Service Manager Accreditation

Advanced level training
for aspiring and practicing
project leaders

Unique NEC
accreditations

Embedding best practice
in organisations, upskilling
managers and their teams

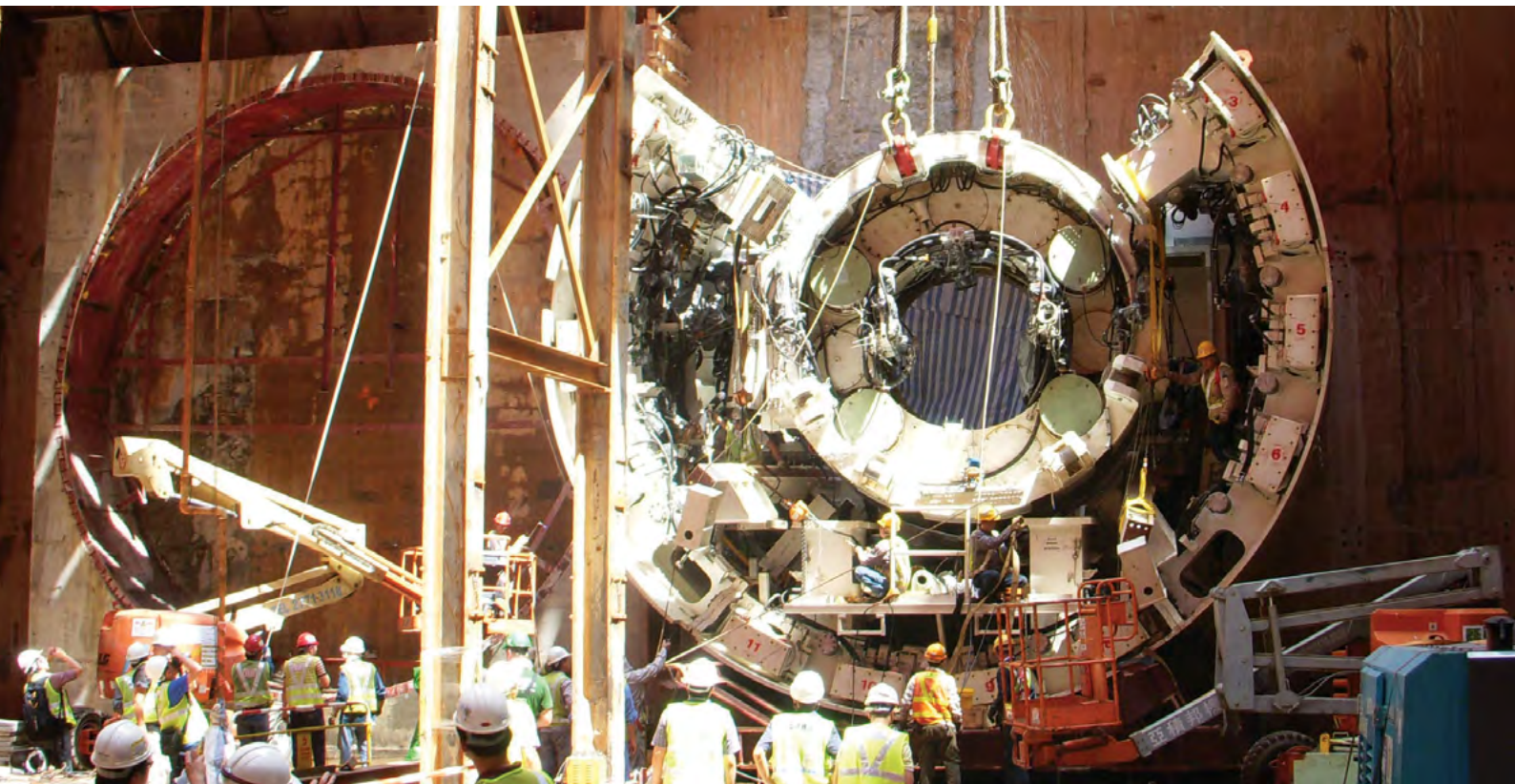
Recognised
by employers



Discover more at
necontract.com/accreditation

Embedding Safety Through Smarter Design

Delivering Exceptional Client Outcomes Safely



Arcadis is the leading global Design & Consultancy firm for natural and built assets. Applying our deep market sector insights and collective design, consultancy, engineering, project and cost management services, we work in partnership with our clients to deliver exceptional and sustainable outcomes throughout the lifecycle of their natural and built assets.

We are 27,000 people active in over 70 countries that generate €3.4 billion in revenues. Within Asia we can call upon the skills and resource of over 5,000 professionals based throughout the region.

For more information please contact:

T: (852) 2911 2233

E: hyder.hk@arcadis.com

www.arcadis.com

SHAPING THE CITY SINCE 1955

www.dragageshk.com

HONG KONG LINK ROAD

HONG KONG-ZHUHAI-MACAO BRIDGE

Shaping a **Better Life**



A member of the Bouygues Construction group

Lighthouse Club Asia Pacific Celebrates 30 Years in Asia







"So the theme for 30th Anniversary Lighthouse Club Ball in Hong Kong?" pondered the Social and Fundraising Committee at the kick off meeting over a bottle of red wine and tapas.

"Gotta be Pearls right...and...diamonds...no... and mermaids...no...and pirates?" Various "ands" sank without trace, some torpedoed, some of their own volition. Pearls and Black Tie Masquerade Ball ended up making it onto the flyer. Supporting acts, side shows and distractions bobbed to the

surface and ebbed away but some clear cut jewels remained and were carefully polished. The night of the event, as usual, arrived with more haste than expected.

Final rehearsals were still going on while guests started to arrive at the Convention Centre on the dot of seven to pose for photos at the sponsored banner outside. Those without masks were prompted to buy one from our stall and the bar staff began serving drinks.





By the time of the dinner gong at 7.45pm, a lively ensemble of 300 dapper men and elegant ladies had gathered and the procession into dinner began. The tables were stylishly decorated with subtly lit feather arrangements, along with a pearl encrusted safety helmet and a golden balloon bobbing above it on a ribbon. Richard Poulter led the traditional game of Heads & Tails, which was won by Mark Panckhurst.

The Table Captain was democratically elected as the wealthiest person, that person then giving way to the person claiming to have had the most recent sexual encounter. The lucky Table Captain, now selected, donned the safety hat and started



their duties by collecting HK\$100 from each person at the table. They then popped the golden balloon. The Poulterers drew the number from the tombola and the winner's table was identified. The person on the that table with the ticket under their chair won a voucher for HK\$5,000 for Mandarin Oriental kindly donated by Contracts Group. Elaine Man was the lucky winner. What are the chances?

Weaving their way through the 26 tables were Sean Macfarlane and his assistant Henry Harrius,



Over 30 Years in Hong Kong

Regulated by RICS

Battersby Kingsfield Limited (“BK”)

is the Hong Kong based operating company of the BKAsiaPacific Group. BK was formed in Hong Kong in 1985, providing bespoke quantity surveying services to the construction industry within Hong Kong. Over the last 30 years it has grown to incorporate other core services and operating locations and has combined with specialist expertise from other companies to create the BKAsiaPacific Group. BKAsiaPacific currently operates from 7 offices covering 8 countries across the Asia Pacific Region and employs over 140 staff.

- Over 30 years of Professional Construction Services
- Chartered Quantity Surveyors
- Local Resources and Experience
- International Expertise
- Over 140 staff in 7 Countries across the Asia Pacific region

Core Services

Quantity Surveying

Project Management

Commercial and Contract Management

Planning and Programming

Dispute Resolution

Training and Professional Development

Serving Clients with integrity, reliability and professionalism



BKSURCO Training

Conferences, seminars and workshops are regularly conducted for employees of Government Departments, Developers, Contractors and their Consultants, including the following:

- Commercial and Contract Management seminars & workshops
- NEC Training seminars & workshops for employers, contractors and consultants
- Target Cost workshops
- In-house and Public conferences & workshops for the construction industry
- Development and support of Approved Development Schemes for Chartered ICES



BK has been delivering quantity surveying and commercial and contract management training courses for over 20 Years

two magicians wowing the relatively sober guests with their sleight of hand card, coin and every day object based tricks, along with Young Members tirelessly selling raffle tickets.

Rather than the usual break for bidding on sponsored items and prizes, each table also had four electronic tablets and these were used to bid for the vast array of items available throughout the event, the ongoing bidding information being shown on large screens to the left and right of the stage.

This auction had been running online for a week and many items already had prices above their retainer, ensuring that there was a swift start to bidding. Ranging from the ever popular cases of wine and artworks to holidays in the Peak District and the Maldives, there was something for all pockets and tastes.





Paul Sapiera and his band struck up and the starter was deftly served by an army of well trained staff accompanied by free flowing wine. With that, the night was up and running. And what a night.

It is always important to get the story of the Lighthouse Club across to potential new members and sponsors and this was done by a series of short interludes during the proceedings that were presented by Young Members. One particularly strong area of development over the last year has been the Young Members and they stepped up for this event, with Adam Christian Nelson, Monique Hansen, Shannon Ho and Prasad Ekanayake leading from the front in both the organizing and performing on the night.

John Battersby was made honorary Life President of the Asia Pacific Region. The award recognizes

the huge contribution John has made over many years to the LHC in Asia and is well deserved. He took the opportunity to tell of the early days of the Lighthouse Club in Hong Kong and how Jenny Deli had requested and become the first female member of the LHC.

Dave Parkin, a long standing Committee Member, also stole the stage to marshal everyone to their feet three times for toasts, the second to The Queen, and the third to The Queen's 90th Birthday. Even the mums were amused. Other entertainment came from Richard Poulter and Mike Atkin with their Little People sketch, ably assisted in the arm department by Michelle



Asia Pacific
T-CRAFT
寶嘉
Dragages
Hong Kong
興
HING
HSIN 新昌
CHONG



Poulter and Monique Hansen. John Secker made two visits to the stage, joining the band to sing his own version of the Beatles' Back in the USSR. The hotly anticipated entertainment highlight was announced by Michelle Poulter calling for Hugh Wu, John Battersby, Barry Adcock, Glenn Haley and Jenny Deli to join her on the stage.

Before they could move from their seats, enter stage left five Young Members led by Carmen Ching wearing oversized lifelike masks of the recently mentioned Committee Members. Their choreographed version of the Bee Gee's Staying Alive was met with rapturous clapping and prompted John and Jenny to briefly join their younger impersonators on the dancefloor.





More food and wine was served and consumed and the dancefloor filled and heaved with revelers, the band giving a further rendition of Staying Alive for all to strut their best John Travolta stuff and throw some moves.

Festivities wrapped up around midnight, with the organisers remaining to assist with the clean up and Vincent Connor and friends to assist cleaning out the Cocktail Bar (kindly sponsored by Tai Lang Chung). The After Party was at Joe Bananas, where John Battersby led the team as if he were indeed a Young Member. There was talk of this year's event being the best ever. That is until next year of course, assuming that Elaine Man will be involved to make everything tick.

Special thanks must go to EFT-Craft, title sponsor of the evening, Mission Possible for that HK\$75,000 villa in France and to the team at the Hong Kong Convention & Exhibition Centre for their swift action in dealing with all of our requests from redirecting the lighting to pick out the Little People to rearranging the external space to cater for Adam's football extravaganza.





ENGINEERING THE FUTURE

MTR, HONG KONG

Deep beneath the frenetic streets of one of the world's busiest cities, Laing O'Rourke is delivering critical urban infrastructure that will drive Hong Kong's future transport needs.

One of the world's largest privately owned construction and infrastructure companies, Laing O'Rourke pursues innovations that will challenge and change the way the construction industry goes to work.

With operations in South East Asia, Europe, North America, Australia, New Zealand and the Middle East, Laing O'Rourke is committed to fully understanding the needs of its clients, protecting and enhancing the value of their assets, and delivering on its promises – regardless of the scale or complexity of the challenge.

A KEY PARTNER FOR HIGHLY TECHNICAL PROJECTS

For more than 60 years, VSL and its subsidiary Intrafor have been at the forefront of specialised civil engineering. The cornerstones of our success are a strong international presence in 30 countries, our taste for innovation and our highly skilled team. With 370 patents registered, our dedicated R&D Department strives continuously to develop and improve our proprietary systems. We communicate best practices to our staff through the VSL Academy - our Bangkok-based training centre – with the aim of always delivering the best quality to our clients while maintaining the highest safety standards.

Specialist in:

- Post-tensioning for buildings and infrastructure
- Bridge construction
- Foundations and ground engineering
- Containment structures
- Structural repairs and retrofits



info@vsl.com
www.vsl.com
www.intrafor.com





Our Construction practice

Deacons' award-winning construction practice provides a high-quality, integrated service, tailored to our clients' specific requirements. We frequently advise a range of market-leading international and domestic employers, contractors and consultants, as well as financial institutions and government organisations in prestigious projects across the region. With well-established offices in Beijing, Shanghai and Guangzhou, we have deep roots in the regional markets.

For further information, please visit www.deacons.com.hk or speak to our contacts listed.



Joseph Kwan

Head of Litigation & Dispute Resolution

Tel: +852 2825 9324

joseph.kwan@deacons.com.hk



Cheung Kwok Kit

Partner

Tel: +852 2825 9427

kwokit.cheung@deacons.com.hk



Joseph Chung

Partner

Tel: +852 2825 9647

joseph.chung@deacons.com.hk

Pioneering Carbon-Negative Home, The B House, Unveiled In Singapore

Pioneering operational carbon-negative home generates more green power than it consumes, costs the same as similar properties in the area, and draws on many of the passive design techniques used in Singapore's iconic Black and White colonial bungalows

Pomeroy Studio, has announced the completion of their pioneering operational carbon-negative home: the B House, in Singapore. The home, which is highly water, energy and waste efficient, offsets the energy requirements of its occupants (i.e. operational carbon zero) through the use of solar energy, and provides surplus energy that could in the future be fed back into the grid. The B House employs many of the passive design techniques used in Singapore's colonial Black and White bungalows; and when coupled with modern technology, results in one of the most sustainable detached modern homes in the region at the same price point as the neighbouring residential developments.

"The owner of the B House was keen to push the boundaries of sustainable design for a private commission of two family bungalows in Bukit Timah, Singapore" said Founding Principal Prof. Jason Pomeroy, continuing "the home sought to ensure that the occupants would never have energy bills again, and greatly reduced water bills. The challenge therefore was to create a zero carbon house at the same cost of a bungalow comparable in scale. What started as a carbon zero project would eventually become a pioneering operational carbon negative house in Singapore"

The B House drew on many of the lessons learnt from Asia's first carbon-zero prototype home, the Sime Darby Idea House (2010) in Malaysia, which was also designed by Prof. Pomeroy, an expert in sustainable



design and zero-carbon development. Whilst the Idea House reinterpreted the techniques embedded in the Malay Kampong House, B House provided an opportunity for Pomeroy Studio to study the traditional Black and White bungalow of Singapore. Such buildings featured generous roof overhangs, large Verandahs for outdoor living and entertaining, and variable shutters that could keep the sun out but allow the air to percolate in. Learning from its passive design techniques and space planning principles allowed for their subsequent reinterpretation for the 21st century tropical house.

Like the Black and White bungalows before it, the B House takes a 'form-matching-climate' approach that embraces the climatic conditions of Singapore in order to reduce energy and water use. The house is orientated and shaped to minimise heat from the East and West sun – reducing solar heat gain and maximising cross ventilation through the prevailing wind. Airflow is further facilitated through strategically placed window openings and high ceilings. North and South façades comprise of low, medium and high-level windows and shutters that act like a series of valves in a similar fashion to its historical predecessor. These can be opened and closed in multiple configurations to regulate airflow, prevent rain, and provide shade whilst filtering light during the hottest or wettest seasons. Daylight penetration is further optimised through shallow floor plates that permit all habitable rooms to receive 100% natural light.



Colonial and Asian dwellings were marked by the presence of Courtyards and Verandahs, serving as places of social interaction while also cooling the buildings themselves, as the breeze entering into the home through such spaces would be cooled by the surrounding foliage. The B House features both. Verandahs line both wings of the house, channelling cooler air into the interiors, and the central Courtyard is strategically placed between the more public formal reception area and private areas. This ensures that natural light and ventilation percolate into the interior spaces, and also acts as an outdoor social space.

The passive design techniques drawn from the traditional Asian dwellings provided a low energy base from which Pomeroy Studio were able to incorporate the latest green technologies and practices, giving the house its carbon-negative credential. The design of the house is modular, allowing pre-fabricated modules to be manufactured off-site, improving quality and reducing wasteful off-cuts. This pre-fabricated 'kit-of-parts' also increased the speed and efficiency of construction by 50% as compared to a similar sized residential building. Furthermore, materials with low eco-toxicity and high recyclable content were used throughout, and water-harvesting equipment with a water saving system forecasted to save up to 465m³ of water per year.

The household energy consumption for a typical family of five in a 'normal' home is estimated at 12,500 kWh per year, while a family of five in the passively designed B House is estimated to consume approximately 8,000 kWh per year. The 100m² of polycrystalline





photovoltaic solar panels on the roof are expected to generate 16,720 kWh per year, meaning that the B House effectively acts as power station that provides surplus energy that could be supplied back into the grid for income generation.

By looking to the past to shape the future, the B House highlights the importance culture and tradition plays in addressing many of the environmental challenges facing Singapore and Asia, "The future of sustainability is not just about technology, but, like the B House, draws on the essence of culture and tradition to create built environments that are carbon-free and truly reflect their inhabitants' way of life" said Pomeroy, adding "We are delighted to have been given the opportunity to design this carbon negative home in Singapore. This project complements our Studio's continued research into the field of zero-carbon development and its application to commercially orientated projects. We are proud to have been able to push the boundaries of sustainable design at the same price point as the 'business as usual', whilst retaining a commitment to the culture of place".

The B House has been awarded the Building Construction Authority's (BCA) Green Mark Platinum Award, the highest award for environment-friendly buildings in Singapore.

DESIGN TEAM

Prof. Jason Pomeroy (Principal and Director-in-Charge), Yoshi Shimada (Associate Principal), Deepshi Bhogal (Senior Sustainability Consultant), Mayank Kaushal (Senior Sustainability Consultant), Elizabeth Garcia (Architectural Design)

For more information please visit www.pomeroystudio.sg
Photographs © Robert Such



Linden Comansa shows brains and brawn in Cadiz

The tower cranes that built the new bridge across the Bay of Cadiz are gone now, but the tale of how the cranes were put up, put to work and then taken down again lives on among the builders

From anywhere on the shore of the Bay of Cadiz, the Puente de La Pepa now dominates the view. The newly opened bridge connects the ancient peninsular city of Cadiz to the Spanish mainland. This year, for the first time in eight years, the bridge dominates the view alone, unaccompanied by the two Linden Comansa tower cranes deployed during those years to build it. The assembly and disassembly of the cranes was a feat of engineering just as intriguing as the construction of the bridge itself.

The cable-stayed bridge is 3,092m long, and each of its two pylons is 185m high, with a main span of 540m between them, soaring 69m above sea level. Its construction was a mighty project, requiring the deployment of two equally mighty Linden Comansa 21LC400 tower cranes belonging to the construction company Dragados. In Hong Kong, Linden Comansa cranes were used in building the North Lantau Hospital and The Royal Garden Hotel in Kowloon.

The Dragados 21LC400s were positioned where the pylons of the Puente de La Pepa now stand, one on the bay shore, the other in the middle of the bay. The company Eleva Grúas Torre was in charge of erecting, maintaining and dismantling the cranes. Eleva Grúas Torre manager Tomás Criado says “The two cranes reached a maximum height of 195.6m. Strong wind gusts are very common in the Bay of Cadiz, with much greater strength at such height, which hampered a lot all the tasks carried out by our team.”

Putting up the 21LC400 in the middle of the bay required a mobile crane on a barge to assemble the tower crane to the minimum height for installation of a hydraulic climbing cage. This then allowed the addition of 10 sections until the 21LC400 reached a height 69.2m – enough for construction of the pylon to begin. As the pylon rose, so did the 21LC400, until it towered 195.6m above the sea. Each 21LC400 needed four ties to its respective pylon to be able to work at such a height.



The Linden Comansa cranes lifted first the steel and concrete for the pylons, and then the cables that support the deck of the bridge. For eight years, their 110kW hoisting engines kept them working swiftly and efficiently. During construction, the metal anchors that attach the cables to the pylons were redesigned, increasing their weight to over 23t – more than the 18t capacity of the cranes. A huge mobile crane was brought in to solve the problem on land. But solving the problem in the middle of the bay meant Linden Comansa's R&D department had to beef up quickly the 21LC400 crane's kinematics and counterweights to enable it to lift the weight.

Their job done, the 21LC400s were dismantled. But they first had to remove themselves the highest of their ties to their respective pylons. The highest of the ties bracing the crane in the middle of the bay was 23m long and weighed 10t. But the pylon got in the way of the 21LC400's jib. So sections of the jib had to be removed to make it short enough to manoeuvre. This

meant using an articulating crane, fitted on top of the pylon for bridge maintenance, to remove 30m of the jib and the corresponding counterweights, and place the pieces on top of the pylon so that the 21LC400 could lower them to the deck of the bridge. The tower crane jib then had room to remove the highest of the ties bracing it to its pylon. Disassembly took 21 working days.

The 21LC400 on land was closer to the pylon it was braced to, and the articulating crane on top of the pylon could not reach the jib-end of the tower crane. So a jib section dismantling device, designed by Linden Comansa's engineering team, was used to shorten the 21LC400's jib by 20m, enough to allow the articulating crane to finish the job of reducing the length of the jib – and so, again, give the tower crane jib room to remove the highest ties bracing it to its pylon. Disassembly, in sometimes unfavourable weather, took 17 working days.

APPOINTED PERSON

acc. to BS7121 – Code of Practice for Safe Use of Cranes

- ▶ The Hong Kong Code of Practice for Safe Use of Mobile Cranes specifies that a competent person shall plan any combined lift with mobile cranes.
- ▶ The Appointed Person Training according to British Standards gives the participants the knowledge and the certificate of competency to plan and supervise lifting operations.



Training Contents:

1. The Load, its characteristics and method of lifting
2. Calculation of the Total Load
3. Selection of a suitable crane(s), understanding crane Duty Charts
4. Selection of suitable Lifting Equipment, Types, Understanding of Charts, Calculation using Mode Factors
5. Positioning of the Crane, Taking into account Outrigger Center Point Loadings, Ground Bearing Pressures, Mat Sizes, Proximity Hazards
6. Environmental Conditions
7. Producing Drawings to Aid in Planning
8. Risk Assessment
9. Method Statement



Location :	Alatas Hong Kong Training Center
Duration :	3 Days (Class room based)
No. of participants :	max. 10
Language :	English
Prerequisites :	Experience in working with cranes, Technical Background



The course will be held by an instructor who is certified according to Standard BS7121 and LOLER. There will be an examination and certificate will be issued upon successful completion.



The Lighthouse Club Asia Pacific Region to become “Lighthouse Club International”

At an International Summit Meeting of Lighthouse Clubs in Hong Kong at the occasion of the Lighthouse Club celebrating 30 years in Asia since the Lighthouse Club Hong Kong Branch was established in 1986, members of The Lighthouse Club Asia Pacific Region (“LHCAPR”) resolved to change its name and broaden its scope to become “Lighthouse Club International” with full backing of the Board of the Lighthouse Construction Industry Charity from the UK.

Essentially, Lighthouse Club International will continue to follow the objectives of LHCAPR which are to

- support and, when necessary, co-ordinate the work of charitable assistance to persons within the Building and Civil Engineering Industry who suffer hardship which is undertaken by the branches of the Lighthouse Club in various countries;
- promote the establishment of further branches of the Lighthouse Club in countries where none have been properly constituted;
- promote good fellowship between the members and branches of the Lighthouse Club;
- provide a facility for those people in the construction industry in countries and territories where there is no properly constituted Lighthouse Club to join the Lighthouse Club and participate in its fellowship and charitable objectives locally and overseas,

but worldwide instead of being limited to the Asia Pacific Region.

This will enable the Lighthouse Club to develop into a truly global organisation.

Should anyone require further details, please contact johnbattersby@bkasiapacific.com.



Charity Golf 2015 – Singapore



Chinese New Year Get-Together 2016 – Malaysia



Safety Leadership Awards 2016 – Hong Kong



Financial Assistance – Kidney Transplant – Philippines



Family Fun Day (for beneficiaries of Benevolent Fund) 2013 – Hong Kong



We Build Connections

CEC is one of the principal contractors for the US\$ 17 billion Taiwan High Speed Rail (THSR).

Continental Engineering Corporation operates in Taiwan, Hong Kong, Macau, India and Malaysia, constructing high-speed rails, tunnels, viaducts, highways, specialist buildings and other infrastructure projects

For more information, please visit www.continental-engineering.com or contact CEC Hong Kong Branch.

TEL: (852)29601398 FAX: (852)29601399

商界展關懷
caring company 2015/16
Awarded by The Hong Kong Council of Social Service
香港社會服務聯會頒發


大陸工程公司
CONTINENTAL
ENGINEERING CORP
A MEMBER OF CONTINENTAL HOLDINGS

Executive Committee 2016/2017

President
Derrick Pang

Officers
Chairman
John Battersby

Deputy Chairman
Cordia Yu

Secretary
Glenn Haley

Treasurer
Neil Roberts



Sub-Committees

Benevolent Committee
Philco Wong, Cordia Yu, Steve Tennant

Golf Society
Glenn Haley, Richard Poulter

Financial Committee
Neil Roberts, Barry Adcock

Magazine/Website/Communications
Mike Atkin, John Battersby

Membership
Robert Gordon, Robert Park, Janey Rogers

Seminars/Conferences/Exhibitions
John Battersby, Vincent Connor

Safety Committee
Mark Divers, Steve Rowlinson

Social & Fund Raising
Richard Poulter, Richard Frederick,
David Parkin

Vision & Strategic Planning
Vincent Connor, Hugh Wu

Young Members Group
Prasad Ekanayake, Anel Idriz, Adam Nelson

Women in Construction
Shannon Ho, Bobo Chow

Administration
Michelle Poulter, Elaine Man

Committee Meeting

On Saturday 30 April, the members of the Hong Kong Committee accepted an invitation to hold their monthly meeting at The Waterfront restaurant on Lamma. Not surprisingly, this prompted a large turnout and even Hugh Wu, who loves his Saturday morning golf, agreed to attend!

Peter Berry, who the more long-standing members will remember, also joined the throng later for lunch.

Peter was one of the instigators of the Pay For Safety Scheme in 1995 – the purpose of which was to remove construction site safety from competitive tendering by paying for

a range of scheduled safety related items at pre-fixed and profitable rates. Failure on the part of a contractor to fully comply with the relevant specification for a safety item would be punished by the non-payment of that item. Interestingly, Peter now believes it's time for the scheme to be reviewed. Perhaps others have a similar viewpoint ...

After the Chairman (still Hugh at the time) declared the meeting over (probably after his 3rd or 4th beer!), John Battersby announced that lunch was on him. A most enjoyable afternoon stretched into early evening and a few stragglers were seen dashing for the ferry as the sun set.



Treasurer's Report

The audited accounts of the Lighthouse Club Hong Kong Branch (HKB) for the year ended 31 December, 2015 were presented to and approved by the Members at the AGM on 6 May, 2016. The audited accounts of the Lighthouse Club Hong Kong Benevolent

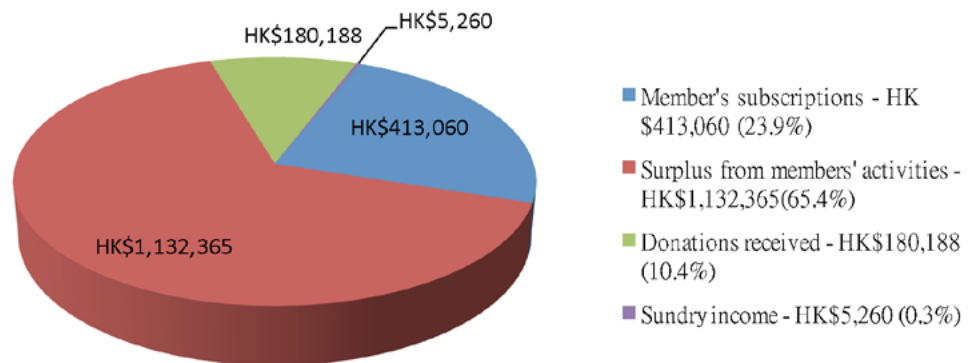
Fund (HKBF) for the year ended 31 December, 2015 were presented to and approved by the Trustees on 14 May, 2016. A summary of the HKB and HKBF accounts is set out below for members' information.

Hong Kong Branch

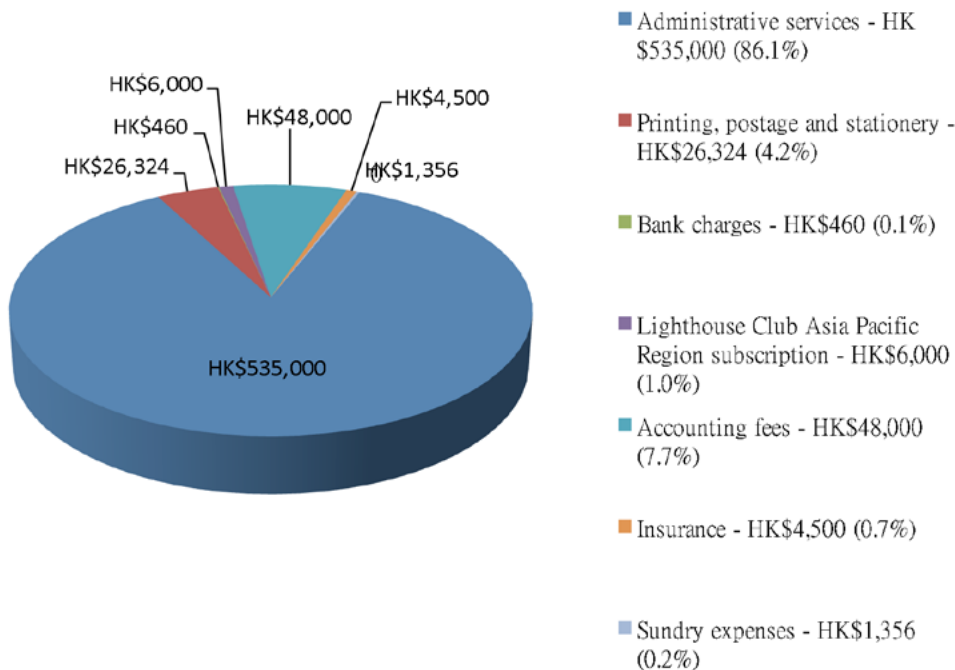
The HKB returned a surplus in 2015 before donations of HK\$1,109,233.

The HKB's income and expenditure during the year were as follows:

HKB Income 2015 - HK\$1,730,873



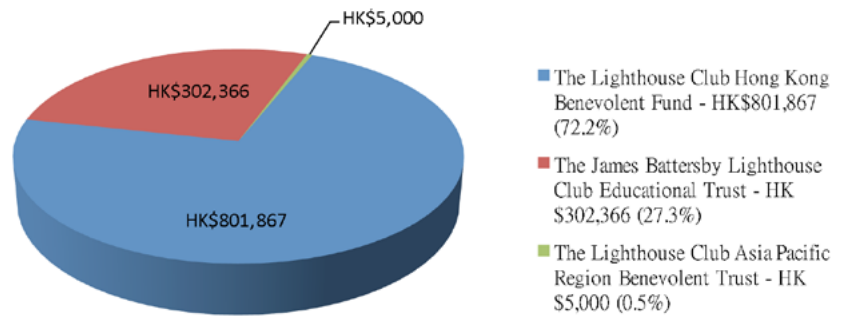
HKB Expenditure 2015 - HK\$621,640



Donations made by the HKB in 2015

100% of the HKB's surplus generated in 2015 was donated to the Lighthouse Club Charities as follows.

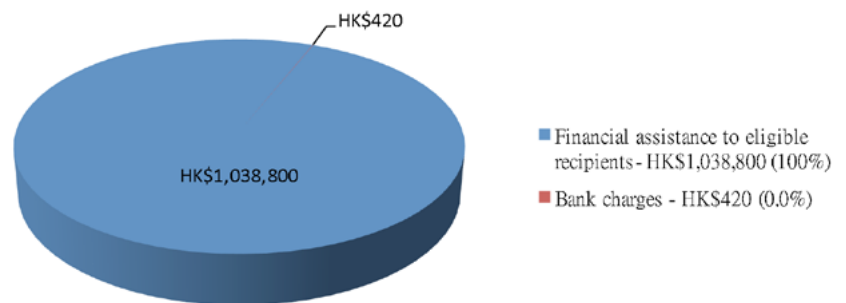
HKB Donations 2015 - HK\$1,109,233



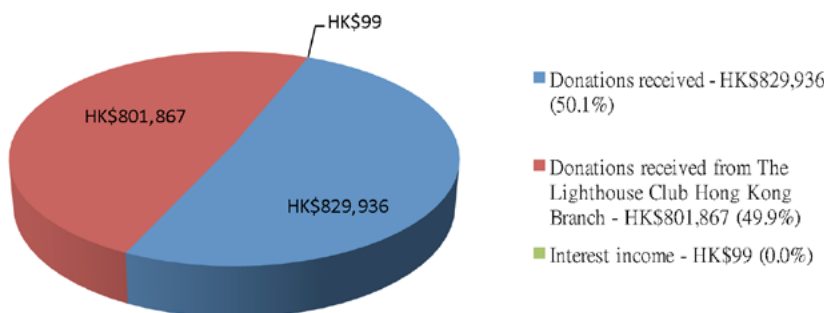
Hong Kong Benevolent Fund

The HKBF returned a surplus in 2015 of HK\$592,682. The HKB's income and expenditure during the year were as follows:

HKBF Expenditure 2015 - HK\$1,039,420



HKBF Income 2015 - HK\$1,631,902



The HK\$1.039 million of financial assistance provided by the HKBF supported 28 cases in 2015.

Other charitable activities

The Hong Kong Construction Association (HKCA) continued to make funds available under their Accident Relief Fund (ARF) to assist the Club in its charitable work. During 2015 the HKCA ARF supported 11 cases with funding of almost HK\$578,000.

When payments from the tied funds of HK\$100,000 and the contributions of approximately HK\$110,000 made by The James Battersby Lighthouse Club Educational Trust to Hong Kong

beneficiaries are taken into account, Lighthouse Club charities paid out HK\$1.83 million and provided assistance to 47 cases in Hong Kong in 2015.

If you have any queries regarding the financial affairs of the Club please feel free to contact the Treasurer via lighthousehk@gmail.com



SAFETY AND HEALTH AWARDS 2016 MALAYSIA



Master Builders Association Malaysia (MBAM) organised the 2016 Annual Safety & Health Conference 2016 on 10 & 11 May, 2016. Part of the conference is the award ceremony for the Safety and Health Awards 2016 which is organised by the Lighthouse Club of Kuala Lumpur and MBAM.

The theme of this year's safety conference was "Safety in Heavy Lifting". Lifting operations are inherent to many occupations in the construction industry. The costs of accidents related to lifting operations are immense. Therefore, together through this conference the objective was to find ways to enhance the safety aspect of lifting operations through the sharing of ideas and the leveraging of resources, and seek common solutions towards addressing this occupational safety and health hazard that concern us all in Malaysia.

This year's Safety Conference took a more global perspective on construction safety by inviting a number of experienced and knowledgeable speakers to share their latest construction safety technology and best practices with the participants.

The highlight of the Conference was the Presentation of Safety & Health Awards 2016. The award presentation is initiated to offer a vehicle to recognise and reward the achievements of those who work tirelessly to enhance and highlight the safety level of the project work site.

MBAM Safety & Health Awards 2016 were presented in two categories as follows:

MBAM Golden Award for Leadership in Safety & Health;
Winner: YBhg. Dato' Sri Ir. Dr. Judin Bin Karim

MBAM Safety & Health Award for Site Personnel;
Winner: Ms Candy Lai Yu Tian

YBhg. Dato' Sri Ir. Dr. Judin Bin Karim was the CIDB Chief Executive from 2011 – 2015. He was instrumental in the signing of a Memorandum of Understanding between CIDB Malaysia and MBAM on 15th April 2014 that set out the basis for co-operation between the two organisations with a view to enhancing occupational safety and health (OSH) in the construction industry through OSH

development, accreditation, certification and training for construction personnel. Through this cooperation, MBAM and CIDB Malaysia has embarked on roadshows and trainings such as for Safety & Health Assessment System in the Construction Industry (SHASSIC) and Hazard Identification Risk Assessment and Risk Control (HIRARC) Workshop throughout the nation especially among the small time contractors. Besides that, construction safety guidelines are also jointly published. Trade Foreman training were also jointly conducted not only to enhance the skills of the workers but also to cultivate the mindset of “do it right and do it safe”.

During his tenure at CIDB, he had personally pushed forward the agenda to drive construction industry towards excellence through formulation of Construction Industry Transformation Programme (CITP). The CITP identified 4 major thrust including Safety, Quality & Professionalism. He drives the need for industry to change the 3D (dirty, dangerous, demanding) image and to ensure safety and welfare of construction workers and public are looked after. The CITP address the need to enhance safety aspect and workers welfare through various strategies. He was also the chairman of Expert Panel formed under the directive of the Cabinet.

Ms Candy Lai Yu Tian is an Environmental Safety & Health Assistant Manager currently involved in a building project, Parcel F in Putrajaya. Among projects she previously involved include the design and built of Sunway Pinnacle, Sunway Medical Centre, Sunway South Quay, Batalion 4 Pasukan Gerakan Am (PGA) and Balai Polis Semenyih.

She is an individual who has played significant roles in ensuring the Safety and Health practices are always strictly adhered to at project sites. With extensive experience in the construction industry, she has long acknowledged that Servant Leadership is crucial in ensuring the dynamics of the project team and has exercised the values throughout her career. She is a registered Safety and Health Officer with DOSH and holds a Master Degree in Occupational Safety and Health Management. Among her other qualifications, she is a registered



CIDB SICW trainer, and is also a registered Assessor for Safety and Health Assessment System in Construction (SHASSIC) with CIDB Malaysia.

The main challenge she is facing now focuses primarily on the client requirements of her current project which are more stringent and with higher benchmarking, especially in the area of Permit to Work (PTW) system and Zero Tolerance rules, of which both are widely practised in the Oil & Gas industry.

YBhg. Dato' Sri Ir. Dr. Judin Bin Karim was awarded a Golden Helmet Trophy and a certificate while Ms Candy Lai Yu Tian won RM 5,000.00 in cash, a Silver Helmet and a certificate proudly sponsored by VINCI Construction Grands Projets Sdn. Bhd, Freyssinet PSC (M) Sdn. Bhd., Al Ambia Sdn Bhd, 39 Essex Chambers and Hilti (Malaysia) Sdn. Bhd. The Lighthouse Club of Kuala Lumpur and MBAM records appreciation to the said sponsors for their strong support extended to MBAM's effort in promoting and enhancing the safety & health of the construction industry.



KL ELECTS COMMITTEE

www.facebook.com/LighthouseClubKL



The LHC KL's AGM was held on Thursday 7 April 2016 and a new committee has been elected:

- Roderick Noble – President
- Stephen Healey – Vice-President
- Anthony Edwards - Treasurer
- Bert de Munck – Secretary
- Clarise Low, Roberto Arcia, HT Ong, Andrew Merrilees – Ordinary Committee members

As at 31 May 2016 the Lighthouse Club KL has 108 members of which are 5 corporate members.

LHC KL Monthly Get Together's were held at El Sid's on 3 March 2016, Jarrod and Rawlins Bangkung (in conjunction with the AGM) on 7 April, El Sid's on 5 May 2016 and the Quiz night was held on 2 June 2016 at Heineken Malaysia.

Upcoming Get Together's:

- Thursday 14 July 2016 at El Sid's
- Thursday 4 August 2016 at Never Mine it's yours
- Thursday 1 September 016 at Jarrod and Rawlins Bangkung



We're here to help when things don't go as planned.

Contract Dispute Consultants has built an impressive track record in resolving complex construction disputes.

Call us on **852 2470 6033** to see how we can help you.

1405 Bonham Trade Centre, 50 Bonham Strand, Sheung Wan, Hong Kong
 t (852) 2470 6033 f (852) 2470 6133 e info@contractdispute.com.hk



www.contractdispute.com.hk

The Academy of Experts
Expert Training for Expert Witnesses Worldwide

EXPERT WITNESS FEELING EXPOSED?

ACADEMY TRAINING
FOR EXPERTS
CAN **HELP**
YOU SUCCEED

JOIN US FOR OUR NEXT PROGRAMME
IN HONG KONG - NOVEMBER 2016

- The Expert's Report
- Role & Responsibilities of the Expert
- Going Into Court



www.academyofexperts.org

**THE
ACADEMY
of
EXPERTS**

The Academy of Experts
3 Gray's Inn Square
London WC1R 5AH
United Kingdom

☎ +44 20 7430 0333
☎ +852 3010 1269
✉ admin@academy-experts.org
🐦 @tae_experts

AA

Annual Kuala Lumpur Quiz Night Attracts Members and Friends

Our annual quiz Night in Kuala Lumpur was held on Thursday 2nd June, by 7pm a crowd of charitable Lighthouse Club quiz and beer fanatics including guests gathered at The Heineken Tavern for some fun networking and to ready themselves for the mind-boggling Quiz competition.

With the help of free flow of Paulaner, Kirin Beer, Affligem, Kilkenny, Tiger, Guinness, Heineken, Strongbow Cider, Smirnoff Ice.... random teams were formed and new alliances were made. A total of approx. 60 LHC KL Members and guests were breaking sweat with questions on Music, General Knowledge, Sports and Engineering. After 2 toiling hours and a close battle for the number one spot the best team and Golden Spade winners were the Kangaroo Kung-Fu Fighters (Michael McKenzie, Howard Ambercrombie, Clarise Low, Paul Simmons and Lee Warner). The Wooden Trowel as worst team was Team Jan, while the Supporting Prizes went to Team Hi-Hi (Hilti) for being the smartest dressed team and Team RT as the loudest team in the tavern.

The Quiz Night was successful with great member participation and the generous sponsorship from 39 Essex Chambers, Sid's Pub and Heineken Malaysia for their venue, drinks and food.



NORTON ROSE FULBRIGHT

Norton Rose Fulbright
is a proud sponsor of the
Lighthouse Club Asia Pacific

**Heading into unexplored territory?
We're there.**

Our far-reaching global footprint brings with it far-reaching knowledge. This allows us to deliver bold new ideas in established markets and react first in emerging markets all around the world. From complex regulation to local laws and customs, our experience allows us to tackle the terrain with certainty. So whether your next step represents geographical or intellectual progress, you can feel confident taking it with us.

Law around the world
nortonrosefulbright.com

Financial institutions | Energy | Infrastructure, mining and commodities

Transport | Technology and innovation | Life sciences and healthcare

Fun, Fellowship and Fundraising Attracts New Members in Singapore

A number of representatives from Singapore attended the Lighthouse Club's 30th Anniversary celebrations in Hong Kong; this was an excellent opportunity to catch up with old friends as well as to keep up to date with the latest developments within the industry.

There was a well-attended quiz night a Champions Golf, which resulted in the legal minds of Pinsent Masons crushing the opposition to secure a most magnificent merlion statue as first prize.

A number of exciting events are planned for the coming months; these include a family day at Champions Golf at the end of July, the Annual Charity Golf Tournament on the 12th of August. There will also be a wine and cheese evening on 23 October and of course the Dinner and Dance on 5 November at the Tanglin Club.

The Lighthouse Club Singapore has continued its fundraising efforts through a variety of avenues, the backbone of which remains the monthly meetings, kindly supported by our sponsors and attended by a growing number of members keen to promote the Club's work in Singapore. These are held on the second Thursday of every month.

Support continues to be given to needy individuals both in Singapore and the region. As well as those who have been injured in industrial accidents. We are also continuing to strengthen our link with Transient Workers Count Too (TWC2) as an avenue to connect with those that are in need of our support.

In addition during the June get together contribution was made to the National University of Singapore to support disadvantaged students that are studying construction related subjects.



Lighthouse Club, Singapore

Charity Golf Day Friday, 12th August 2016

RAFFLES COUNTRY CLUB, LAKE COURSE

Wanted Golfers Who Need To Have a Great Day Out For a Good Cause!

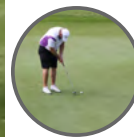
Enjoy good golf, beer on the course and the presentation dinner with some great prizes

The Lighthouse Club is the Construction Industry Charitable Society in Singapore

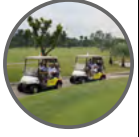
Our aim is to promote fellowship and co-operation amongst all members and help to develop a Benevolent Fund.

We help to provide financial assistance to victims of accident or illness within the construction industry and to their dependents where a fatal or permanently disabling accident has occurred.

The motto of the Lighthouse Club is "Altit cum Humanitate" which translates as "Consideration for Others"



WE NEED A GOLD SPONSOR



For registration or sponsoring this event please email:

- **Karen Yau**
- karenyau22@gmail.com

or

- **Janelle Stewart**
- Janelle.Stewart@amida-recruit.com

For registration we will require:

- Golfers Names
- Handicap
- Email
- Contact number
- Dinner (Y/N)
- T-Shirt size
- LHC Member (Y/N)

REGISTER NOW!!!

TO AVOID DISAPPOINTMENT

Individual Fee:

- **\$295** for LHC members & guest
- **\$395** for non-LHC members (inclusive of 1 year LHC membership)

Flight Fee:

- **\$1,180** for LHC members & guest /
- **\$1,580** non-LHC members (inclusive of 1 year LHC membership)

Golf Format: Texas Scramble




Lighthouse Club Singapore
www.lighthouseclub.org.sg


The Lighthouse Club (Singapore) is registered with the Registry of Societies, Government of Singapore under Enique Entry Number T00550060E

Quality advice and deliverables that will make a real difference




 **Expert Witness**
Expert opinion on complex quantum and delay issues.




 **Claims Support**
Preparation and defence of contractual claims for extensions of time and additional payment.



 **Contract Advice**
Independent opinions and contract reviews for risk and opportunity.



 **Dispute Resolution**
Expert support in mediation, adjudication, arbitration, litigation and alternative dispute resolution.



ADR | Partnership

Partners in Alternative Dispute Resolution

1711 Citicorp Centre, 18 Whitfield Road, North Point, Hong Kong
t: (852) 2234 5228 f: (852) 2234 6228 e: info@adrpartnership.com

www.adrpartnership.com

To discuss your project requirements, please contact **James Longbottom, Patrick O'Neill or David Longbottom on (852) 2234 5228**



COSTS ANALYSIS LITIGATION CONTRACTS EOT CLAIMS
CLAIMS ADVICE REVIEW SUPPORT
STRATEGY RETENTION VALUATION MEASUREMENT
CLAIMS PAYMENT MEDIATION COSTS
ANALYSIS STRATEGY ARBITRATION
MANAGEMENT

Bill Palmer Contract Services

Bill Palmer Contract Services Company Limited
11/F., New Hennessy Tower, 263 Hennessy Road, Wan Chai, Hong Kong
www.bpcs.com.hk



Viewing your project from a different perspective...

Aspect Asia has a wealth of experience in providing specialist skills in the commercial management of projects and in the resolution of a wide range of construction disputes.



- ▲ Commercial and contractual advice
- ▲ Preparation, defence and management of claims for time and costs



- ▲ Expert Witness services
- ▲ Dispute Management



- ▲ Forensic Planning and Delay Analysis
- ▲ Commercial and Project Management
- ▲ Quantity Surveying

Contact : Nick Adams

Aspect Consulting Asia Ltd

Units A & B, 10/F, Neich Tower, 128 Gloucester Road, Wan Chai, Hong Kong

Tel: +852 2827 6068 Fax: +852 2827 6168 E-mail: info@aspectasia.com.hk

Website: www.aspectasia.com.hk

Civil Engineering Contractor Specializing in Foundation & Site Investigation Works



VIBRO 惠保(香港)有限公司
VIBRO (H.K.) LIMITED
新加坡成员 Member of NWS Holdings

11/F, Chevalier Commercial Centre,
No. 8 Wang Hoi Road, Kowloon Bay, Hong Kong
Tel: (852)2137-5500 Fax: (852)2137-5599
Website: <http://www.vibro.com.hk> Email: email@vibro.com.hk

Congratulations to the **Lighthouse Club**
for 30 years in Asia!



Ian Cocking
Partner, Hong Kong
T: +852 2287 2802
E: ian.cocking@clydeco.com



Gilbert Kwok
Partner, Hong Kong
T: +852 2287 2804
E: gilbert.kwok@clydeco.com

www.clydeco.com

International law firm, Clyde & Co has

Tier 1 Construction in
Hong Kong

APAC Legal 500 2016

‘One of the best
construction practices
in the region’

APAC Legal 500 2016



THE CONTRACTS GROUP LTD.

Commercial, Contractual and Management Consultants
to the Construction Industry

WE DELIVER
SOLUTIONS



RISK
MANAGEMENT



PRE-CONTRACT
SERVICES



PROJECT
MANAGEMENT



CLAIMS, CONTRACTUAL AND
DISPUTE MANAGEMENT



DISPUTE RESOLUTION



EXPERT WITNESS

Reducing risk, delivering a forecasted outcome.



Project

Owned, developed and delivered by



Scenario Project gives you the software that you need to run your project with visibility, control and confidence.

- Project Cost Controls
- Financial Management
- Maintenance Management
- Hire Asset Management
- Labour and Time Management

Projection Group Hong Kong

30/F, 3005 Universal Trade Centre
3-5A Arbutnot Road, Central, Hong Kong
+852 2973 6243

Helping Hong Kong businesses keep projects on-cost and on-time since the mid-90s.
www.projection-group.com



HFW'S GLOBAL CONSTRUCTION TEAM IS HERE TO HELP

Holman Fenwick Willan is a global law firm assisting businesses in the construction sector. Our lawyers advise on a range of projects, including energy, transportation, major infrastructure and commercial developments.

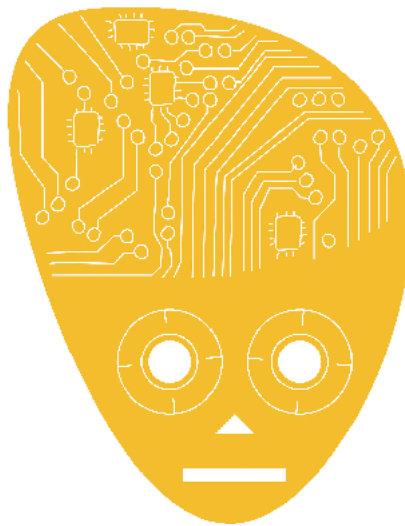
For more information about how we can help your business, please contact:

- | | | | | |
|---|--|--|--|---|
| Martin Downey
Hong Kong, Partner
T: +852 3983 7788
E: martin.downey@hfw.com | Nick Longley
Hong Kong/Melbourne, Partner
T: +852 3983 7680/
+61 (0)3 8601 4585
E: nick.longley@hfw.com | Colin Dodd
Hong Kong, Consultant
T: +852 3983 7681
E: colin.dodd@hfw.com | Amanda Davidson
Sydney/Singapore, Partner
T: +61 (0)2 9320 4601/
+65 6411 5300
E: amanda.davidson@hfw.com | Matthew Blycha
Perth, Partner
T: +61 (0)8 9422 4703
E: matthew.blycha@hfw.com |
|---|--|--|--|---|

Lawyers for international commerce

hfw.com

São Paulo London Paris Brussels Geneva Piraeus Beirut Riyadh Kuwait Abu Dhabi Dubai Singapore Hong Kong Shanghai Tianjin Perth Melbourne Sydney



Bringing innovation to life.

We're helping our clients be disruptors, not the disrupted.

To find out more visit www.innovative.legal

www.pinsentmasons.com | www.Out-Law.com
© Pinsent Masons LLP 2016



LEADING INDEPENDENT CONSULTANTS

ecology
arboriculture
landscape

aec

Our team offers a full range of technical and scientific expertise, from familiarity with planning and environmental legislation, unparalleled fieldwork experience and careful handling of sensitive environmental issues.

ECOLOGY:

- ECOLOGICAL IMPACT ASSESSMENT
- HABITATS AND SPECIES: SURVEYS, MONITORING, & AUDITS
- HABITAT DESIGN & CREATION, PLANNING & CONSTRUCTION
- ECOLOGICAL ADAPTIVE MANAGEMENT
- WILDLIFE HABITAT RESTORATION & CREATION
- GIS MAPPING & ENVIRONMENTAL DATA MANAGEMENT

ARBORICULTURE:

- TREE CONDITION & RISK ASSESSMENTS
- SMALL TO LARGE SCALE TREE SURVEYS
- TREE MAINTENANCE WORKS
- TREE MANAGEMENT PLANS
- GPS PLOTTING OF TREES & MAPPING
- PRE/POST DEVELOPMENT SURVEYS
- TREE FELLING APPLICATIONS

For more details visit www.aechk.hk



Let's talk.

Not just an invitation, but the way we work best.

Plus 3 helps put your construction projects
back on track and back on budget, across Asia.

So give us a call and let's talk.



Find out more at www.plus3.com.my.
Plus 3 in Malaysia and in Hong Kong.

Malaysia

Plus Three Consultants (M) Sdn Bhd
Contact: Michael McIver
Suite B-3A-12, Block B, Plaza Mont' Kiara,
No. 2, Jalan Kiara, Mont' Kiara, 50480 Kuala Lumpur.
Tel : +6 03 6201 0996 E-mail : kl@plus3.com.my

Hong Kong

Plus Three Consultants (HK) Ltd
Contact: Stephen Tennant
Suite 901, Level 9, The Hong Kong Club Building,
3A Chater Road, Central, Hong Kong
Tel: +852 2851 2528 E-mail: hk@plus3.com.my

Aon Risk Solutions

Congratulations to the Lighthouse Club on its 30th anniversary in Hong Kong

Contact our Construction Insurance Specialists at +852.2861.6666 or visit aon.com for more information

Aon Hong Kong Limited
28/F Tower 1 | Times Square
1 Matheson Street | Causeway Bay
Hong Kong

Risk. Reinsurance. Human Resources.

AON
Empower Results®

Lighthouse Club - Asia Pacific Region Sponsors

ADR | Partnership
Partners in Alternative Dispute Resolution



AON
Empower Results®



BACHY SOLETANCHE
法國地基建築公司

BERWIN LEIGHTON PAISNER

BESTJOIN

BIMS
Group Limited

BK Asia Pacific



俊和發展集團
CHUN WO DEVELOPMENT HOLDINGS LIMITED

CLYDE & CO
其禮律師行

coins
Construction Industry Solutions



DEACONS
的近律師行



FRAGOMEN

F T I
CONSULTING

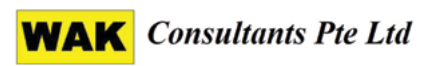


Gammon

GOLIK
高力集團

HILL
Hill International





Forthcoming Events

of Autumn 2016

July

Friday 8

Hong Kong Get Together
Insiders, 17 Fenwick Street, Wanchai

Thursday 14

Kuala Lumpur Get Together
El Sid's, 1 Jalan Setiapuspa

Ho Chi Minh City Networking Drinks

Game on Bar, 115 Hồ Tùng Mậu, Bến Nghé, 1,
Hồ Chí Minh

Singapore Get Together

Urban Fairways, 168 Robinson Road,
from 6.30pm to 11.30pm

Melbourne Networking event

Belgium Beer Cafe, 5 Riverside Quay, Southbank
from 5.30 to 7.30pm

Friday 15

Macau Get Together
FEAST Restaurant, G/F Sheraton Grand Macau Hotel,
Sands Central, Taipa

Saturday 16

Brisbane Winter Ball
Pullman Brisbane King George Square, Corner Ann and
Roma Streets from 7.00pm till 1.00am

Thursday 21

Brisbane Networking event
The Pav Bar & Courtyard, 39 Edward St,
from 5.30 to 7.30pm

Manila Wine, Cheese and British Rock event

The Hub, Marriott Hotel, from 6.30pm to 9.30pm

Thursday 28

Perth Networking event
Best Western Premier, The Terrace Hotel,
237 St Georges Terrace, from 5.30 to 7.30pm

Sydney Monthly Get Together

The Rooftop Terrace, Metropolitan Hotel,
No. 1 Bridge Street, from 5.30 to 7.30pm

Hong Kong Eddie Ward Dinner

Royal Hong Kong Yacht Club, Kellett Island,
Causeway Bay

Phnom Penh monthly gathering

Venue TBA

Thursday 4

Kuala Lumpur Get Together
Never Mine, No 30, Jalan Changkat Bukit Bintang

Friday 5

Hong Kong Monthly Get Together
and Annual General Meeting
Insiders, 17 Fenwick Street, Wanchai

Wednesday 10

Macau Monthly Social Gathering
Cafe Deco, Venetian

Thursday 11

Ho Chi Minh City Networking Drinks
Game on Bar, 115 Hồ Tùng Mậu, Bến Nghé, 1,
Hồ Chí Minh

Thursday 11

Melbourne Networking event
Belgium Beer Cafe, 5 Riverside Quay,
Southbank, from 5.30pm to 7.30pm

Friday 12

Singapore Golf Day
Raffles Country Club, 450 Jalan Ahmad Ibrahim,
from 11.30 am to 11.00 pm

Thursday 18

Brisbane Monthly Get Together
The Pav Bar & Courtyard, 39 Edward Street,
from 5.30pm to 7.30pm

Manila Social Event

The Hub, Marriott Hotel

Thursday 25

Perth Monthly Get Together
Best Western Premier, The Terrace Hotel,
237 St Georges Terrace, from 5.30pm to 7.30pm

Phnom Penh monthly gathering

Venue TBA

Sydney Networking event

The Rooftop Terrace, Metropolitan Hotel,
No. 1 Bridge Street, from 5.30pm to 7.30pm

Friday 26

Perth Winter Ball
Parmelia Hilton Perth, 14 Mill Street,
from 5.30pm to 7.30pm

August

Thursday 1

Kuala Lumpur Monthly Get Together
Jarrod & Rawlins, Jalan Bangkung, Bangsar

Friday 2

Hong Kong Monthly Get Together
Insiders, 17 Fenwick Street, Wanchai

Thursday 8

Ho Chi Minh City Networking Drinks
Game on Bar, 115 Hồ Tùng Mậu, Bến Nghé, 1,
Hồ Chí Minh

Melbourne Networking event

Belgium Beer Cafe, 5 Riverside Quay,
Southbank, from 5.30pm to 7.30pm

Thursday 8

Singapore Network Night
Venue TBA

Wednesday 14

Macau Monthly Social Gathering
Cafe Deco, Venetian

Thursday 15

Brisbane Networking event
The Pav Bar & Courtyard, 39 Edward Street,
from 5.30pm to 7.30pm

Manila Social Event

The Hub, Marriott Hotel

Thursday 29

Phnom Penh monthly gathering
Venue TBA

Perth Networking event

Best Western Premier, The Terrace Hotel,
237 St Georges Terrace, from 5.30pm to 7.30pm

Sydney Networking event

The Rooftop Terrace, Metropolitan Hotel,
No. 1 Bridge Street, from 5.30pm to 7.30pm

September



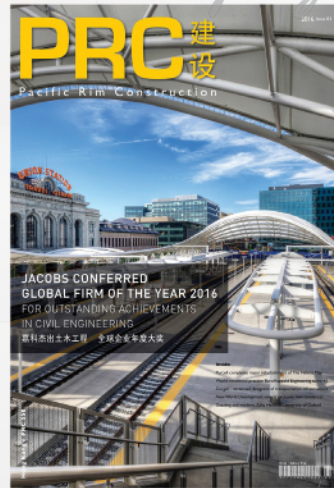
100% committed to serving the local building industry

ROF Media is the Hong Kong media group focused solely on building and construction. We create high-quality customised publications for a broad range of leading businesses. Since 2002 we have been providing effective solutions targeting high net worth individuals for our clients' tailor-made marketing materials, in print and online.

Reports

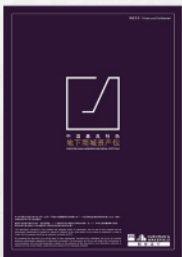


Magazines



Newsletters

Books



Catalogues

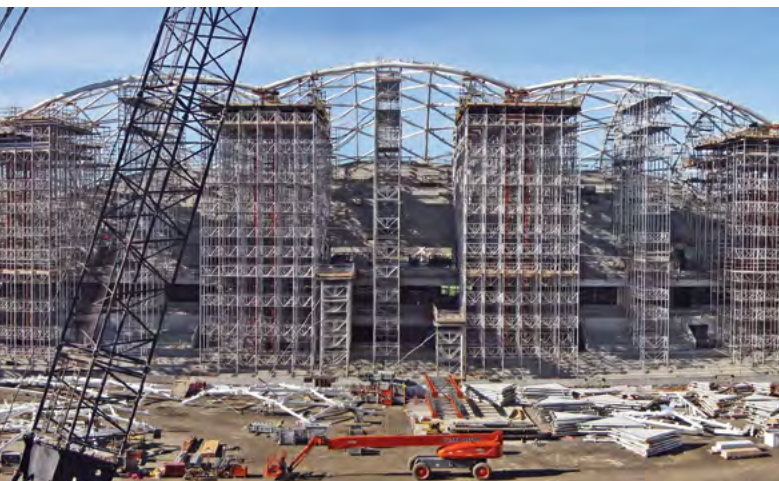


SCAN HERE

for more of our custom publishing services

ROF Media

+852 3150 8988
info@rofmedia.com
www.rofmedia.com



Bringing
structures
to life

- RMD Kwikform Asia Pacific provides innovative, productive and safe formwork, shoring and scaffolding systems.
- We are part of a worldwide company that provides a high level of technical and sales support coupled with the latest generation formwork and shoring systems.
- Our extensive product range enables us to provide the best solution to assist you with your next project.
- Our Sales Team consult with their customers to provide the best solution at a competitive price and they provide support throughout most aspects of the project.
- Our renowned engineering capability enables us to work together with our client's construction team to develop, design, and detail cost-effective engineered solutions that are practical, productive and safe.

RMD Kwikform Philippines, Inc

Units 2406-2409 Raffles Corporate Center,
F. Ortigas Jr. Ave., Ortigas Center,
Pasig City, Phils. 1605
Tel: +632-696-7635
Fax: +632-661-6456
E-mail: rmd.philippines@rmdkwikform.com

RMD Australia

66 Bennet Ave, Melrose Park
Adelaide, South Australia 5039
Tel: +61 8 8179 8200
Fax: +61 8 8179 8201
Email: rmd.australia@rmdkwikform.com

RMD Kwikform Hong Kong Ltd.

22/F, Excel Centre,
483A Castle Peak Road,
Cheung Sha Wan, Kowloon
Hong Kong
Tel: +852 2415 4882
Fax: +852 2745 0232
Email: rmd.hongkong@rmdkwikform.com

RMD Kwikform Singapore Pte Limited

29 Tanjong Penjuru (S)
609026 Singapore
Tel: +65 6863 4252
Fax: +65 6863 4275
Email: rmd.singapore@rmdkwikform.com