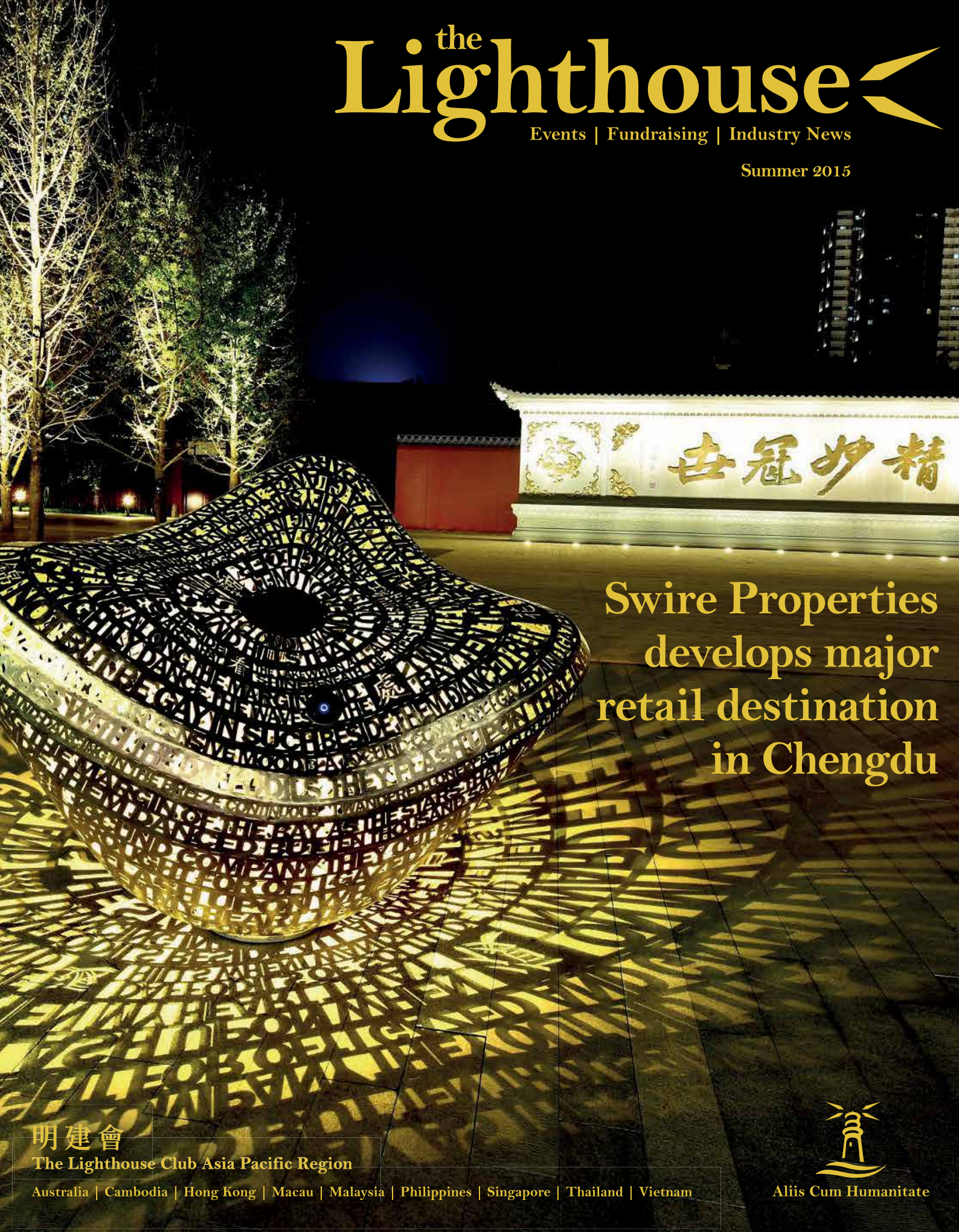


# the Lighthouse

Events | Fundraising | Industry News

Summer 2015



Swire Properties  
develops major  
retail destination  
in Chengdu

明建會

The Lighthouse Club Asia Pacific Region

Australia | Cambodia | Hong Kong | Macau | Malaysia | Philippines | Singapore | Thailand | Vietnam



Aliis Cum Humanitate



協興建築  
HIP HING CONSTRUCTION

新創建集團成員 Member of NWS Holdings

[www.hiphing.com.hk](http://www.hiphing.com.hk)

Delivering high quality projects,  
caring for the environment,  
investing in our people

*Hip Hing Construction — the contractor you can trust*



Tseung Kwan O Hospital



Interlink, Tsing Yi



ARGENTA,  
Mid-levels West

# Internationally recognised construction industry experts

## FTI Consulting Construction Solutions

### What We Do

We are a group of internationally recognised construction industry professionals, engaged for our delivery of service excellence. We offer a broad range of contract advisory services to assist owners, contractors and construction law firms in the prevention, mitigation or resolution of construction disputes.

### Prevention

- Procurement advice
- Tender process management
- Contract drafting and negotiation
- Due diligence
- Risk management
- Policy/procedural development for dispute avoidance
- Project scheduling/programming

### Mitigation

- Commercial advice
- Contractual advice
- Contract administration (secondments)
- Claims assessment (quantum and planning)
- Project recovery strategies

### Resolution

- Strategic dispute management services
- Claims preparation and analysis
- Expert witness services (quantum and planning)
- Forensic planning and scheduling
- Alternative dispute resolution
- Litigation support
- Capital Project Advisory Services (CPAS)

The Construction Solutions practice within FTI Consulting includes quantity surveyors, engineers, planning professionals, project managers and claims delay specialists, many with dual qualifications in law and arbitration.

With backgrounds in both commercial contracting and professional practice, our consultants are experienced in technical, commercial and legal matters, enabling them to identify key issues quickly and to find the optimum solutions for our clients.

For more information about our Construction Solutions practice or other FTI Consulting advisory services, please contact:



Graham McNeill  
Head of Asia Pacific, Construction Solutions  
+852 3768 4674  
graham.mcneill@fticonsulting.com



## THE LIGHTHOUSE Summer 2015

The Lighthouse Club Asia Pacific Region  
Suite 1901-2, Hopewell Centre,  
183 Queens Road East, Wanchai, Hong Kong

Tel : +852 2736 9885  
Fax : +852 2687 2252  
lighthousehk@gmail.com

Administration Secretary : Ms Elaine Man

### Editorial Committee :

Steve Tennant  
John Battersby  
Vincent Connor  
Mike Staley  
Elaine Man

Published by ROF Media

Publisher : Mike Staley  
Designer : Parnell Chan

E : publisher@rofmedia.com  
T : +852 3150 8988

### Executive Committee

#### Chairman

**Keith Buckley**  
keith.buckley@cotai.venetian.com.mo

#### Immediate Past Chairman

**Willie Kay**  
willie@wakmc.com

#### Chairman Elect

**Bob Park**  
rmpark50@gmail.com

#### Deputy Chairman

**John Battersby**  
johnbattersby@bkasiapacific.com

#### Secretary

**Steve Tennant**  
stevetennanthonhkong@gmail.com

#### Acting Treasurer

**John Battersby**  
johnbattersby@bkasiapacific.com

#### Membership Secretary

**Jim Chessell**  
jchessell@bkasiapacific.com

#### Bangkok

*To be advised*

#### Ho Chi Minh City

**Colin Johnston**  
cjohnston@bkasiapacific.com

#### Hong Kong

**John Battersby**  
johnbattersby@bkasiapacific.com  
**Steve Tennant**  
stevetennanthonhkong@gmail.com

**Bob Park**  
rmpark50@gmail.com

#### Kuala Lumpur

**Rod Noble**  
roderick.noble@39essex.com

#### Macau

**Keith Buckley**  
keith.buckley@cotai.venetian.com.mo  
*To be advised*

#### Manila

**Guenter Taus**  
guenter.taus@jec.com

#### Phnom Penh

**Euan Ritchie**  
ritchie@artisansurfacefinishes.com

#### Singapore

**George Wall**  
gwall@asgardprojectsolutions.com  
**John Davies**  
john.davies@idrissolutions.sg

#### Australia

**Paul Roberts**  
Paul.Roberts@aquenta.com.au  
**Nick Longley**  
nick.longley@hfw.com

# Chairman's Message

This is my first message as Chairman of the Lighthouse Club Asia Pacific region and I am honored to be given this task for the next twelve months I would like to thank Willie Kay, the outgoing Chairman for his hard work and look forward to working further with him.

In the role of Chairman I will try, together with our committee, to continue the growth of funds both regionally and locally.

In May we held our regional meeting in Singapore which was followed, in the evening, by a very enjoyable social function. Our next meeting is August in Perth, Australia and is an indication of the continuing regional growth of the Lighthouse Club.

I have been based in Macau for twelve years and unfortunately this year, there have been five construction fatalities. It is a result of a high level of construction activity and a relatively unskilled workforce. We work in a high risk environment and we must, as construction professionals, do our utmost to promote a safe working culture and environment. I would like to see all branches exploring and taking initiatives to achieve this.

I look forward to meeting Lighthouse members in our branches the coming year.



**Keith Buckley**  
Chairman  
The Lighthouse Club,  
Asia Pacific Region

## About The Lighthouse Club

The Lighthouse is the magazine of the Lighthouse Club Asia Pacific Region, which was established in 1998. The Lighthouse Club was originally established in England in 1956 and first came to Asia in 1986 with the formation of a Branch in Hong Kong.

The aims of the Lighthouse Club worldwide are to promote good fellowship amongst its members who work in or are associated with the construction industry and to provide charitable assistance to those in need within the construction industry and to their dependents in qualifying cases.

The Lighthouse Clubs that were in existence in 1998 in Asia agreed to the formation of the Lighthouse Club Asia Pacific Region with the following objectives:

- To support and where necessary co-ordinate the work of charitable assistance undertaken by the branches of the Lighthouse Club within the Asia Pacific Region
- To promote the establishment of further autonomous branches of the Lighthouse Club in the Asia Pacific Region
- To promote good fellowship between the members and branches of the Lighthouse Club in the Asia Pacific Region

In addition to the charitable works of the individual branches of the Lighthouse Club, the Lighthouse Club Asia Pacific Region has two related Hong Kong based charities which provide charitable assistance throughout the Asia Pacific region:

- The James Battersby Lighthouse Club Educational Trust which provides assistance for education and training to qualifying young persons
- The Lighthouse Club Asia Pacific Region Benevolent Trust which provides assistance to relieving poverty and financial need to persons currently or previously employed in the building and civil engineering industries and allied trades where such persons and/ or their dependents are suffering hardship as a result of accident, disability or ill health.

For more information and membership / sponsorship enquiries please contact the Membership Secretary or Deputy Chairman of the Lighthouse Club Asia Pacific Region at lighthousehk@gmail.com. To advertise in this magazine please contact publisher@rofmedia.com or lighthousehk@gmail.com

Official website : [www.lighthouseclub.asia](http://www.lighthouseclub.asia)

The Lighthouse is online at [www.issuu.com/rofmedia](http://www.issuu.com/rofmedia)



**Features****Top That**

IBI expertise replaces roof in major factory refurbishment

**9-12****Taikoo Li**

Chengdu's ancient history informs dynamic new retail destination

**16-21****In This Issue****28-30****Risk Conference**

Managing Health & Safety and Commercial Risks Effectively

**6-7****Interview**

CIC hosts a forum with Britain's Institution of Civil Engineers

**22-25****LHC Asia Pacific Region News**

[22-23] Eddie Ward Dinner

Honoured guest Mike Rowse addresses industry event

[24] Lighthouse Club farewells an old friend

[25] Asia Pacific region committee meeting

**35****Advertorial**

KLKJV partners with Hilti on MTR South Island Line

**Regional Branch News**

32-36

Hong Kong

38-40

Kuala Lumpur

41

Singapore

42

Bangkok

43

Macau

44-45

Australia

48-49

**Sponsors**

Lighthouse Club Asia Pacific Region Sponsors 2015

50

**Events**

Calendar of forthcoming member's events Aug-Oct

# Building for the future

**Britain's Institution of Civil Engineers shares its wisdom on infrastructure delivery with its Hong Kong members**

Anyone living in increasingly urbanised Asia is familiar with the scale and potential for disruption caused by building massive infrastructure projects. Up to one-fifth of the world's population is projected to live in mega-cities by 2030, and infrastructure development is set to accelerate and the challenges multiply.

Every infrastructure project is designed to make cities function better. Hong Kong is home to the world's best infrastructure, according to last year's World Economic Forum. Among the most prominent projects are the high-speed rail link to Guangzhou, the Hong Kong-Zhuhai-Macau Bridge, expansion of the MTR and the third runway at Hong Kong International Airport.

Planning in Hong Kong takes an average of almost five years from inception to the start of construction. The city is the most expensive place in the world to build anything, according to consultancy EC Harris.

## Collaborative approach

Professor David Balmforth, the president of the Institution of Civil Engineers in London, discussed the future of infrastructure planning in Hong Kong and the Asia-Pacific region in January. As an organisation promoting best practices, the ICE is working on Shaping Hong Kong, a report exploring how civil engineering can help achieve a low-carbon, high-density way of living. The final report is due in October.



(Left and Right) Mr Lee Shing See of the Construction Industry Council and Professor David Balmforth, President Institution of Civil Engineers, London

In his presentation at the Zero Carbon Building in East Kowloon, Balmforth outlined the necessity of implementing the New Engineering Contract (NEC), promoted by the ICE, which gives greater emphasis to collaboration and transparency than the customary – and dominant – adversarial approach. Balmforth says infrastructure completion is not only at the mercy of slow planning and high costs, but projects are also under pressure to be resilient and responsive to problems such as climate change and population growth.

High costs come early in a project's life, and are generated by lack of direction and clarity in design, and a culture that gives priority to sticking to a budget rather than reducing costs. But that may be changing. After the success of 30 pilot projects under the scheme, the Hong Kong government has committed itself to NECs for all its projects this year and next. The programme will equip "construction professionals with the skills necessary to be able to manage a high standard of specialised project using the NEC3 ECC".

The emphasis is on partnership and collaboration. The ECC or Engineering and Construction Contract programme began in Britain in 2013, and the Construction Industry Council envisages the programme becoming the industry standard throughout the Asia-Pacific region.



Feature courtesy of PRC Magazine. Images courtesy of Development Bureau, MTRC, Leighton Asia

## Process improved

An example of the benefits of the approach is the Fuk Man Road Nullah improvement in Sai Kung, finished six months early and 5 percent under budget. “There will always be cost fluctuations in any form of construction contracting. There will be labour costs, materials costs. The weather adds costs,” says Balmforth.

“What is more important is how we manage those costs. That brings me back to the partnering approach. It’s much easier to manage cost if you’re in a collaborative work [environment] than if you’re in the traditional adversarial pattern. An adversarial contract fosters blame. A partnering contract fosters collaboration.”

Sustainable and cost-effective infrastructure delivery is crucial for economic growth and improved quality of life, and Balmforth believes the two go hand-in-hand. “Developing and operating infrastructure is intrinsically linked with not just the environment, but with the whole quality of life. To create good, sustainable communities for the future you have to have all parts of the jigsaw working together, of which infrastructure is a very important part,” he says.

“But it is only a part. It’s not a case of: ‘Let’s build the infrastructure and then cope with the environment.’ It’s the other way around. Infrastructure needs to work as a part of the bigger picture and not in isolation.”

## Environmental focus

Hong Kong’s less-than-stellar environmental record is well documented. The city suffers at the hands of precisely the kind of infrastructure it apparently needs desperately.

But Balmforth is unconvinced the situation is that dire, and argues that Hong Kong could become a beacon for the rest of the world.

“I think there are a number of important lessons Hong Kong can share with the rest of the world. It’s hugely urbanised,

rapidly growing, it’s got large volumes of traffic movement and constrained borders. Many cities will be facing those problems,” he says, suggesting that the city is in a position to lead a sustainable urbanisation charge.

“In the way [Hong Kong] pioneered major infrastructure, there’s an opportunity here to pioneer future solutions, the next stage of urban development. There’s a massive opportunity to unpeg some of those difficult questions for the future. If we can’t deal with some of those issues here, where can we do it?”



Image courtesy of Leighton Asia





# The Pinsent Masons Lecture – to be delivered by Lord Hope of Craighead

The Pinsent Masons Lecture, now in its third year, will this year be delivered by **Lord Hope of Craighead**.

Following a hugely successful career at the Bar, Lord Hope was appointed as a Judge in 1989, issuing widely-praised decisions over many years.

He was latterly appointed in 2009 as one of the first Justices of the Supreme Court of the United Kingdom – of which he became its first Deputy President. In 2015 he was elected as Convenor of Crossbench peers in the House of Lords; has just been appointed as President of the Abu Dhabi Global Market Court; and is also now an international arbitrator – hence the title of his Lecture: “A Return to Arbitration – some reflections”.

It is an honour to welcome Lord Hope back to Hong Kong. He is an exceptional and engaging speaker and as we expect a ‘full house’, please reserve your place very soon as places for this free, public event will be registered on a ‘first come, first served’ basis. We look forward to your company.

To reserve your place please contact James Astin at [james.astin@pinsentmasons.com](mailto:james.astin@pinsentmasons.com).

**Date:** Thursday, 10 September 2015

**Time:** 6.15pm for a 6.30pm start

**Venue:** The Chinese University of Hong Kong Graduate Law Centre, Second floor of the Bank of America Tower in Central



[www.pinsentmasons.com](http://www.pinsentmasons.com) [www.Out-Law.com](http://www.Out-Law.com)

© Pinsent Masons LLP 2015

  
Pinsent Masons



# Top that

**Building refurbishment specialist IBI needed all the expertise it has acquired over nearly two decades to take the roof off the KOHO building and give it a new one**

Excerpt from the 2015 front cover feature of PRC Magazine Issue #75. Text by Michael Hoare. Images IBI & ROF Media.

Contractor IBI Ltd faced a top-down challenge when it secured Hong Kong's KOHO project, the conversion of a 14-storey light industrial building on Hung To Road in Kwun Tong into office premises. In its 17 years in business, IBI has done at least 15 similar alteration and addition projects, several in conjunction with Pamfleet, the lead development company in the KOHO conversion.

IBI's hard-earned experience has placed it in a perfect position for more retrofitting and refurbishment contracts.

"IBI has forecast that wholesale building conversions will provide a vital solution for the future growth of Hong Kong's commercial stock," says company director Neil Howard.

"There is an ever-increasing shortage of sites for new commercial space, and businesses are increasingly willing to move outside of their traditional CBD locations to secure more cost-efficient solutions."

One of the more demanding aspects of IBI's KOHO undertaking was the removal of the roof of the building and the substitution of a stronger roof that would bear the weight of a new building services installation essential if the former factory was to become A-grade offices. The building had housed a company that made polyethylene and textiles. It had no provision for air conditioning, so the original roof was too weak to bear the chillers and back-up generators needed to keep office workers cool.

## Neighbours at work

Making the job more difficult was the character of the surrounding area. Kowloon East is a busy district containing offices, hotels and homes, all of which generate considerable pedestrian and vehicular traffic. IBI had to be mindful of the general public and of other companies operating in adjacent buildings, and was obliged to make as little noise as possible to avoid disturbing the neighbouring businesses.

The tight schedule and the demanding conditions increased the need for ingenuity and efficiency. "Each site has a unique set of parameters and challenges, and because of this an experienced construction team is required to provide adaptive solutions to the unique challenges and site conditions that present themselves," says IBI director Steven Smithers.

IBI had to demolish the roof slab and columns, while being careful to avoid damaging any of the rest of the structure. As the roof could not bear the weight of heavy-duty demolition equipment, the painstaking demolition of the roof slab took two months of the 10 months the company had to do the job. Having to work through Hong Kong's notorious rainy season made the task no easier.



## Take the stairs

Careful demolition of the old slab was just part of the challenge. Then the debris had to be disposed of. The usual external chute commonly seen in Hong Kong, like a waterslide for rubbish, would have been hazardous to the public. Instead, the rubble had to be taken out through the inside of the building, meaning muscle power had to substitute for the force of gravity that a chute would have exploited.

After the demolition came the construction, and the creative stage was where IBI really shone – even though the same constraints applied. The site was too restrictive for the installation of a tower crane to bring materials to the higher floors. Instead, IBI took the materials up the internal stairways or used a small derrick at the front of the building.

After the new roof had been constructed there was the task of installing the MEP plant equipment – a job made harder by the derrick’s load limit being five tonnes. The environmental requirements of the LEED rating system and BEAM standard imposed further constraints. IBI’s managers say that, from their perspective, the KOHO job meant considerable coordination headaches because work had to be done on many fronts at the same time. Coordination was essential to ensure the safety of the workers and general public without delaying progress.



# Quality advice and deliverables that will make a real difference.



### Expert Witness

- Expert opinion on complex quantum and delay issues.



### Claims Support

- Preparation and defence of contractual claims for extensions of time and additional payment.



### Contract Advice

- Independent opinions and contract reviews for risk and opportunity.



### Dispute Resolution

- Expert support in mediation, adjudication, arbitration, litigation and alternative dispute resolution.

If you wish to discuss your project requirements, please contact James Longbottom, Patrick O'Neill or David Longbottom on (852) 2234 5228.



## Great condition

IBI not only replaced the roof. It also removed all the old external walls, installed a wall façade system that used panels of glass measuring 3 metres by 2 metres and fitted out two new lift lobbies on the ground floor.

The company had one important thing going for it. The quality of the original structure was better than that of other buildings it had helped convert. Senior project manager Li Wai Hong says: "IBI have previously worked on some building refurbishment projects where the structural integrity was in a very poor state and required significant repair works. KOHO's existing structure was in great condition for a building built in 1977."

IBI was established in Hong Kong in 1997. It now has a workforce of 100 people at offices in Hong Kong and Macau.

It is a market leader in building refurbishment and in the fitting-out of premises for corporate, retailing, hospitality and education use. But the KOHO project showed that what really sets IBI apart is its hands-on team of managers, its openness, its enthusiasm for collaborative consultation and its dedication.



# YOUR INFRASTRUCTURE PROJECT YOUR COMMERCIAL OBJECTIVES YOUR RISKS MANAGED



With legal experience stretching across every stage of the construction lifecycle and across three continents, you can continue to entrust us with your most important and complex infrastructure projects.

---

For further information please contact :

**Glenn Haley**  
Tel: +852 3143 8455  
[glenn.haley@blplaw.com](mailto:glenn.haley@blplaw.com)

**Ilan Freiman**  
Tel: +852 3143 8456  
[ilan.freiman@blplaw.com](mailto:ilan.freiman@blplaw.com)

**Geoff Shaw**  
Tel: +852 3143 8457  
[geoffrey.shaw@blplaw.com](mailto:geoffrey.shaw@blplaw.com)

We practice in Hong Kong through Berwin Leighton Paisner (HK) LLP in association with Haley Tam & Co. See our website legal notices for further regulatory information about our Hong Kong office.  
[www.blplaw.com](http://www.blplaw.com)





# BUILDING A BETTER TOMORROW



Gammon Construction is a leading construction and engineering services group committed to finding innovative solutions for our customers. Headquartered in Hong Kong for over 55 years, we have built a distinguished reputation for delivering high quality and complex projects throughout Hong Kong, Mainland China and Southeast Asia. We are fully committed to building for a better quality of life and living environment in a safe and sustainable manner.



**SAFETY**



**INTEGRITY**



**EXCELLENCE**



## Our Construction practice

Deacons' award-winning construction practice provides a high-quality, integrated service, tailored to our clients' specific requirements. We frequently advise a range of market-leading international and domestic employers, contractors and consultants, as well as financial institutions and government organisations in prestigious projects across the region. With well-established offices in Beijing, Shanghai and Guangzhou, we have deep roots in the regional markets.

For further information, please visit [www.deacons.com.hk](http://www.deacons.com.hk) or speak to our contacts listed.



**Joseph Kwan**

*Head of Litigation & Dispute Resolution*

Tel: +852 2825 9324

[joseph.kwan@deacons.com.hk](mailto:joseph.kwan@deacons.com.hk)



**Cheung Kwok Kit**

*Partner*

Tel: +852 2825 9427

[kwokit.cheung@deacons.com.hk](mailto:kwokit.cheung@deacons.com.hk)



**Joseph Chung**

*Partner*

Tel: +852 2825 9647

[joseph.chung@deacons.com.hk](mailto:joseph.chung@deacons.com.hk)

# Fine new bottle for fine old wine

“Enjoy the moment” is the philosophy of most citizens of the southwestern Chinese city of Chengdu. In Sino-Ocean Taikoo Li, they have a modern retail development that gives them a new international shopping experience – an experience both nostalgic and novel – and which lets them wield their new-found spending power.





Sichuan is one of mainland China's most important provinces for industry, agriculture, tourism and culture. The provincial capital, Chengdu, has in recent years joined the ranks of the country's new generation of first-tier cities. It was ranked as China's most liveable city last year because of a set of characteristics that make it an "international city".

The city is thriving, its wealth buoyed by business opportunities. The lengthening of the list of well-known brands sold in Chengdu shows that the city has benefitted from rapid economic development, vigorous growth of tertiary industries and the accumulation of consumer spending power. It is now considered one of the top three cities for potential growth in retailing.

At the end of December, 13 new development projects were under way in Chengdu, together due to yield more than 1.63 million square metres of shops. When they are complete, Chengdu will be the biggest centre for retail in western China.

The cityscape shows many new commercial hot spots, often combinations of high-rise office or housing blocks with low-rise shopping precincts. So the architectural form and intent of Sino-Ocean Taikoo Li Chengdu, a Swire Properties and Sino-Ocean Land development, make it unique among the places to shop in the city.

Sino-Ocean Taikoo Li Chengdu opened in the fourth quarter of last year. The complex contains more than 100,000 square meters of high-quality retail space, based on a pattern of lanes, situated between the Chunxi Road business district and the shops of the Hongxing Road pedestrian precinct.

Sino-Ocean Taikoo Li Chengdu rewrites the rule book for shopping in the city, with its underground shopping leading to a subway station and two underground car parks.

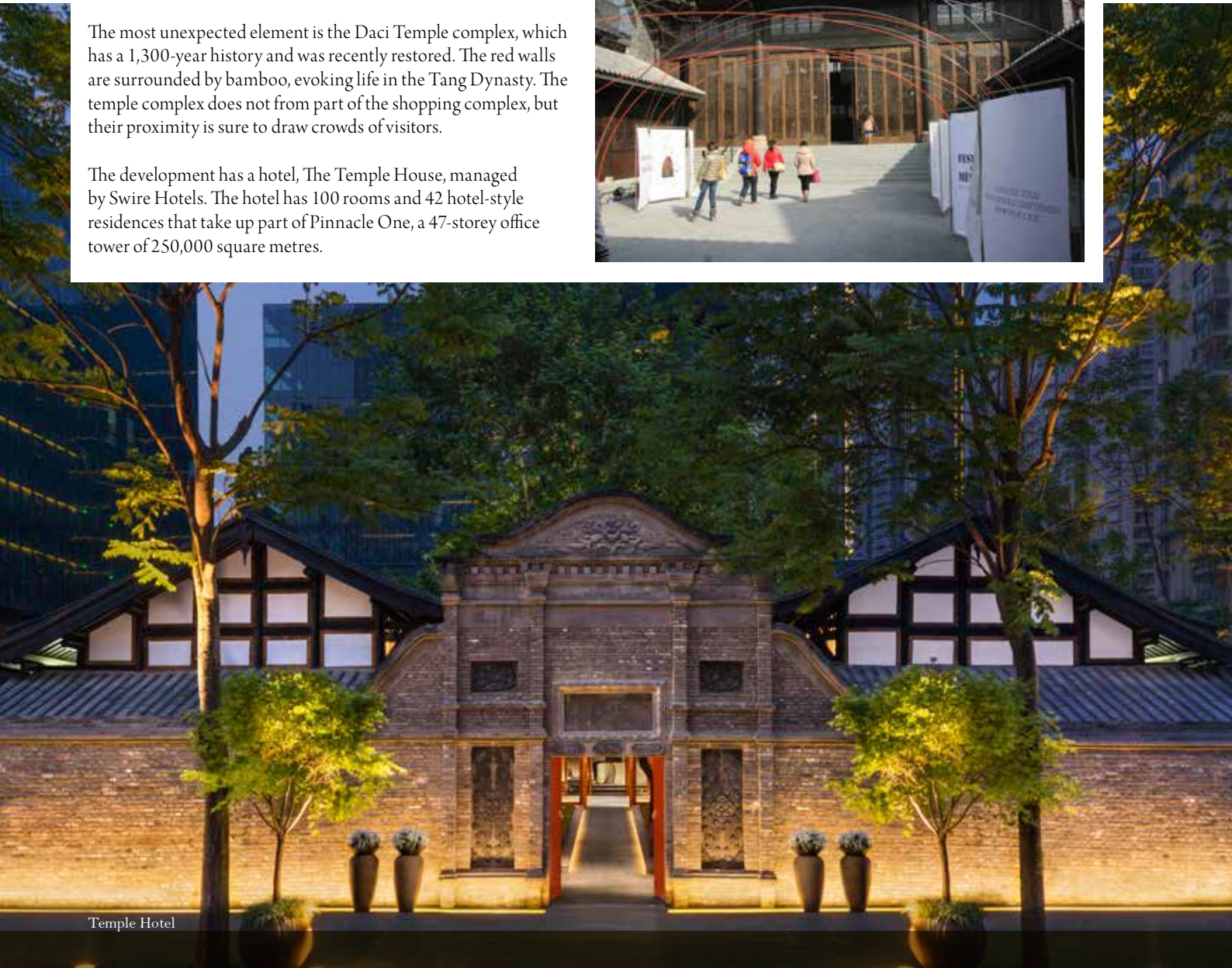
### Fast and slow

The Oval Partnership was responsible for the architectural design, the aim of which was a modern interpretation of the traditional architectural style of the district. Six restored period buildings on the site add to the overall historic feel. Sino-Ocean Taikoo Li Chengdu seamlessly blends the old and the new, allowing visitors to shop and be entertained in the open air, surrounded by reflections of the district's rich architectural heritage.

The streets and lanes that criss-cross Sino-Ocean Taikoo Li Chengdu are punctuated by three large plazas, linked in an unusual manner. A sort of fast lane and a sort of slow lane connect the plazas. The three main shopping streets make up the fast lane, which has a metropolitan, fashionable feel. The vicinity of the Daci Temple complex makes up the slow lane, where alfresco cafes and boutiques line the thoroughfares, creating an ambience of leisurely living.

The most unexpected element is the Daci Temple complex, which has a 1,300-year history and was recently restored. The red walls are surrounded by bamboo, evoking life in the Tang Dynasty. The temple complex does not form part of the shopping complex, but their proximity is sure to draw crowds of visitors.

The development has a hotel, The Temple House, managed by Swire Hotels. The hotel has 100 rooms and 42 hotel-style residences that take up part of Pinnacle One, a 47-storey office tower of 250,000 square metres.





## Coffee farm

Sino-Ocean Taikoo Li Chengdu includes 27 new two-storey or three-storey buildings with traditional Sichuan architectural elements such as sloping roofs with overhangs. The buildings are linked by upper-floor bridges that have compelling views of the lanes and the buildings that frame them.

The buildings employ modern materials to satisfy retailers' needs through steel structures that deliver the greatest possible headroom with the least number of supporting columns.

The retailers creative use of space has resulted in a cornucopia of decors, each is unique but also subtly reflects the environment and celebrates the architecture. The effect is deliberate. Oval Partnership project director Henrique Almeida says the tenant of each shop had to discuss its interior design with the landlord with a view to suiting the shop to the image the development was intended to project. So the two-storey Starbucks, for example, looks like a traditional farmhouse.

Trees line the frontage of Sino-Ocean Taikoo Li Chengdu, and it is around the front of the development that the outlets for well-known international fashions are to be found. The lane leading to the local subway station has become the main entrance to the mall. Soft yellow street lights bathe the area.



## Shared vision

The six restored buildings add a historic and cultural flavour.

Guangdong Hall, built about 1912, was a place for Cantonese in Chengdu to congregate and enjoy opera. After restoration, it will be a fully equipped facility for fashion shows, musical performances, exhibitions and other events. The 19th century Xin Lu is typical of Sichuan courtyard buildings. It has been restored and is now watchmaker Blancpain's first boutique in Chengdu.

The 1840 Majiexiang Ashram was where Buddhists lived and mediated. It will become a superior restaurant. Nos 7 and 8 Zhanghuali Lane were the courtyard residence of a wealthy family in the first half of the 20th century. The buildings will house a high-end spa.

No 15 Bitieshi Street, dating from 1840, was where official imperial translators worked. It will become the lobby of The Temple House hotel after it is restored.





The hexagonal Tower of Treasured Writings, erected in 1368 and standing 7.6 metres tall, is built of dark fired bricks. The tower was where inscribed parchment was ritually burnt. Decorative writing and pictures are engraved on each of the six facets. It will remain in its original position in the Temple Plaza, one of the mall's three plazas.

Sino-Ocean Taikoo Li Chengdu has attracted a huge number of retailers of international brands and high-quality restaurants. There's a wealth of other facilities, including a cinema and a bookshop belonging to well-known chains.

The Chunxi Road subway station is on the doorstep of the mall, and several bus routes pass nearby. The mall also has Chengdu's biggest underground car park. All these advantages make Sino-Ocean Taikoo Li Chengdu the place to congregate in the city centre.

But it is more than just a beautiful shopping complex encompassing streets and plazas, bridges and pavilions. The development directly encourages visitors to engage socially and to investigate the traces of local history in a built environment that blends ancient and modern. All in all, this is the epitome of a vision shared by the architects and the developers.





# Eddie Ward Dinner

On 15th July, the Royal Hong Kong Yacht Club once again played host to this year's Lighthouse Club HK Eddie Ward Dinner

Mike Rowse, guest speaker

The dinner is one of the signature events of the HK Branch each year, and as the name suggests is held to celebrate and honour the life of the founder of the Lighthouse Club, Mr Eddie Ward.

Firstly, thank you to those who attended and showed support during a great evening. A full house of nearly 100 people attended to enjoy an exquisite 5 course meal. Corporate tables were taken by: AON, Insite Solutions Ltd., The Contracts Group, Chun Wo Development Holdings Limited, ADR Partnership, Continental Engineering Corp, Haley Tam & Co / BLP, Venetian Macau, and Fugro Geotechnical Services Ltd.

It was a pleasure to have Mike Rowse as the honoured guest speaker for the evening. Mike shared his insights and observations on project procurement in HK, on the back of the wealth of his experience being based in the region. The talk was hard-hitting but measured, with occasional wry humour.

Mike talked about his experiences of being involved with HK politics pre and post 1997, specifically the procurement of Disney Land, the Convention and Exhibition Centre, and of course HarbourFest. The subsequent Q&A session, with Mike answering openly to all questions fired at him, well and truly capped off a captivating speech.

Mike has written a book called "No Minister & No, Minister: The True Story of HarbourFest" and we suggest you grab a copy.

Adam Christian Nelson and Kelly Mai, representing the Lighthouse Club's Young Members Group and Women in Construction, took to the stage to thank Mike on behalf of the Club. They went on to speak about the origins of the Lighthouse Club, the founding of the HK branch in 1986, and the subsequent international growth of the Club. They then gave an overview of the HK branch's upcoming events whilst emphasising how the events are aimed at embracing networking, fundraising, and fellowship within the construction industry.

The evening was a great success and raised HK\$13,240 for our Lighthouse Club Hong Kong Benevolent Fund. This was made up of HK\$400 as fines for those in the committee for not wearing Lighthouse Club Ties together with HK\$12,840.00 collected in the pink charity helmets.

A special thank you goes out to Glenn Haley for officiating the evening and Elaine Man for organising the event.

Finally, the 2016 Eddie Ward dinner will be the Lighthouse Club HK's 30th Anniversary, we hope to see you all again for a great evening and share a toast once again to Mr. Eddie Ward.



Cocktail drinks and networking



Toast to Mr Eddie Ward and the Club



Chairman Hugh Wu, Administrator Elaine Man, Mike Rowse and Young Members Group Committee Member Adam Christian Nelson



Head table: Hugh Wu, Kelly Mai, Mike Rowse, Barry Adcock, Steve Tennant (from left to right)



Enjoy the Dinner



Young Members Group and Women in Construction Committee Members Kelly Mai and Adam Christian Nelson



Barry Adcock with pink helmet raising fund, thank you.



Officiator of the evening, Glenn Haley



An interesting speech and subsequent Q&A session



# Colin John Wall

3<sup>rd</sup> July 1953 to 16<sup>th</sup> July 2015

The Lighthouse Club Hong Kong Branch is sad to announce that Colin J Wall passed away on 16th July 2015. Colin was a life member of the Lighthouse Club and a strong supporter of the Hong Kong Branch.

As everyone knows, Colin worked tirelessly in developing and teaching Arbitration, Mediation and the Dispute Resolution Advisor System in Hong Kong and around the world. His friends and colleagues will miss his wisdom, humour and generosity. He was an active member of the Chartered Institute of Arbitrators being the Past President, Past Trustee of the East Asia Region and former Chairman of the Hong Kong Branch.

As well as fulfilling his CI Arb roles Colin was the Managing Director and founder of Commercial, Mediation & Arbitration

Services Ltd, Co-President of the UIA Forum of Mediation Centres, past Chairman of the Hong Kong Mediation Council, an Honorary Professor at the University of Hong Kong and a distinguished member of several mediation and arbitration panels. Colin was listed as one of the 10 "Most Highly Regarded Individuals" in the research for *The International Who's Who of Commercial Mediation*.

Tribute services had been held in both Hong Kong and the United Kingdom on 5th August. Friends wish to send condolences are invited to email: [colintribute@gmail.com](mailto:colintribute@gmail.com)

Donations in lieu of flowers to be sent to The Lighthouse Club. Cheques to be made payable to "The Lighthouse Club Hong Kong Benevolent Fund". Cash and cheques to be paid into the following HSBC account 511-286056-001. Please send bank pay in slip to Elaine Man at [lighthousehk@gmail.com](mailto:lighthousehk@gmail.com).

## Civil Engineering Contractor Specializing in Foundation & Site Investigation Works



惠保(香港)有限公司  
VIBRO (H.K.) LIMITED  
新創建集團成員 Member of NWS Holdings

11/F., Chevalier Commercial Centre,  
No. 8 Wang Hoi Road, Kowloon Bay, Hong Kong  
Tel: (852)2137-5500 Fax: (852)2137-5599  
Website: <http://www.vibro.com.hk> Email: [email@vibro.com.hk](mailto:email@vibro.com.hk)



# Asia Pacific Region Committee Meetings

## 5th Regional Committee Meeting in Hong Kong

The meeting was held on the morning of Friday 26th March.

In the absence of Willie Kay (Chairman), John Battersby chaired the meeting which was attended by Officers, Representatives, Co-optees and Observers from Hong Kong, Macau, Malaysia, Vietnam and Qatar.

Following the resignation of John Arkinstall as Secretary, Steve Tennant was formally appointed Secretary. It seems the ball has started rolling as Barry Adcock, the Treasurer, gave notice of his intention to step down and let somebody new take the reins.

The meeting was attended by Max Cope from Doha – the first, but hopefully not last time, there has been a visitor from the Middle East.

Various topics were discussed including the outline plans of the 2016, 30th Year Anniversary book to which all branches are being asked to contribute. The Hong Kong branch of the Lighthouse Club may have been founded in 1986 but it was also the springboard for all of the other clubs throughout the region and everybody has a story to tell. If anybody from “the old days” has photographs from past events, please pass them on to John Battersby here in Hong Kong as soon as possible. The book’s chapters are being written up by branch members but not all were at the inception of each branch so any members out there please get in touch by the end of August.

The next gathering of APR Committee members will be for the Annual General Meeting for 2014/2015 and the 1st APR meeting of 2015/2016, to be held in Singapore on 16th May.

The meeting concluded with a vote of thanks to the Hong Kong branch for their organisation of the meeting.

Annual General Meeting 2014/2015 and 1st Regional Committee Meeting in Singapore

Singapore once again hosted the Annual General Meeting (AGM) for 2014/2015. The AGM was chaired by Willie Kay and, following his election, the 1st APR Committee meeting was chaired by new Chairman, Keith Buckley.

The meeting was held at the Tanglin Club and was attended, for the first time, remotely by Members from Hong Kong, Cambodia, Manila and Australia by means of the AnyMeeting web conferencing facility. Unfortunately, there was no video link but the audio was reasonable, albeit with a slight delay which was

probably due to the wifi connection at the Club. In any case, it was the first time it had been tried so there is room for improvement. For those present, there were Officers, Representatives, Co-optee and Observers from Hong Kong, Macau, Singapore and Malaysia.

One item to mention is the withdrawal of the APR in its dealings with BrokerFish and Jon Del Mar regarding the Medical Insurance. With the exception of one branch, it was felt that there just wasn’t the support being provided from BrokerFish to take this matter forward which is very unfortunate since a few memberships around the region had been sold on the premise that a group, region-wide medical insurance cover scheme was available. It’s back to square one on this issue but the Committee will persevere in its search for alternatives.

New officers for 2015/2016 are as follows:

Chairman	Keith Buckley, Macau
Deputy Chairman	John Battersby, Hong Kong
Immediate Past Chairman	Willie Kay, Singapore
Chairman Elect	Bob Park, Hong Kong
Secretary	Steve Tennant, Hong Kong
Treasurer	John Battersby (temporary, until replacement is appointed)
Membership Secretary	Jim Chessell, Singapore

The next meeting of the APR Committee is due to be held in Perth, WA, on 22nd August.

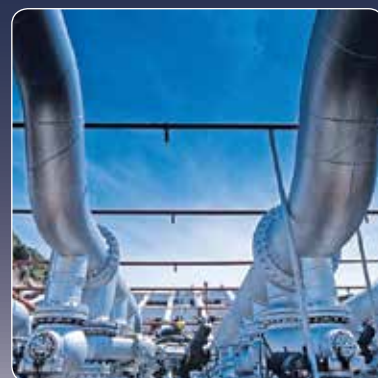
The meeting concluded with a vote of thanks to the Singapore branch for their organisation and hospitality which included a Curry Night and Quiz in the evening. Hong Kong displayed their wide range of general knowledge and were victorious at the end of the night. They weren’t able to carry home their prize of an Air Fryer so it was auctioned off with proceeds going to the Lighthouse Club Singapore Charity Funds.





# PIPE REPAIR BANDAGE

## MINIMISING YOUR DOWNTIME



[www.rapp-it.net](http://www.rapp-it.net)

# WITHSTANDS UP TO 25 BAR

# MinterEllison

---

Over 30 years of experience in  
Hong Kong and Asia Pacific

---

A focused and dedicated team  
of people who you can trust

---

Practical, commercial solutions  
to achieve successful business  
outcomes

---

Tailored advice to focus  
on our client's objectives

---

## CONTACT



**Steven Yip**  
Partner  
T +852 2841 6843  
steven.yip@minterellison.com



**Malcolm Chin**  
Partner  
T +852 2841 6870  
malcolm.chin@minterellison.com



**Henry Sherman**  
Senior Consultant  
T +852 2841 6866  
henry.sherman@minterellison.com

# Construction Risk Management Conference 2015

## Managing Health & Safety and Commercial Risks Effectively

The Lighthouse Club's 2015 conference took a relatively novel approach and presented health and safety risks and commercial risks on the same agenda. The objective being to foster a wider view of risk and taking an integrated approach to managing risk. The excellent and varied presentations by international experts from academia and across the construction industry certainly took this on board, generating topical, forward looking debate and resulting in an outline action plan for the Lighthouse Club, and industry, to tackle.

In addition, and as with all Lighthouse Club conferences, there were the objectives of raising the club's profile and funds for the charitable trusts.

There were over 100 attendees at the Construction conference on 13 May, 2015 and more than HK\$300,000 was raised.

The success of the conference was also hugely dependent on the support of our sponsors. In particular the close involvement of Hilti, Lighthouse Club Safety Partner, in organizing the conference was much appreciated.

Safety Partner



Silver Sponsors



Student Sponsorship Partner



Bronze Sponsor



## The Conference

The main topics of the conference were:-

- New Frontiers of Risk with Turbulence, Contagion, Complexity and Interdependence - Prof Roger Flanagan, School of Construction Management & Engineering, University of Reading UK
- Improving Collaboration in Construction through Equitable Risk
- Allocation and Transparency throughout the Supply Chain - Nigel White, Executive Director of Gammon Construction
- Engineering for Safety - Ian Askew, Director of Gammon Construction
- Managing Construction Risk through Insurance – Loss of or Damage to the Works, Materials, Plant and Equipment - Adrian King, Senior Consultant of AON Hong Kong
- Successful Management of Risk on Complex Projects on SIL(E) – Target Cost Project - Mark Cuzner, General Manager of MTR Corporation Ltd.
- Advancing Health and Safety Cost-Efficiently: New Innovations and Best Practices - Martin Cunningham, Senior Engineer, Hilti (Australia) Pty
- Managing Risk under the New Engineering Contract (NEC3) - John Battersby, Group Managing Director of BK Asia Pacific
- Managing Construction Risk through Insurance – Liability to Third Parties and Employees' Compensation - Iris Chan, Executive Director of Willis Hong Kong
- Risk and Risk Taking Propensity in HK: Culture in Conflict with the Law - Prof Steve Rowlinson, Department of Real Estate & Construction, The University of Hong Kong



Iain Wink



Adrian King

The conference presentations covered a very wide range of topics, ideas and concepts. This brief summary of the conference cannot really do justice to the quality of this information so presentation materials will be made available on the Lighthouse Club website (subject to agreement with the individual speakers). Some key messages from the conference did however include:-

- Being prepared for the unexpected. Evidence suggests that in construction there is 'optimism bias' as frequently projects do not go to plan.
- Taking an integrated approach and working with all interested parties to understand and allocate risk better.
- Improving the understanding of different points of view particularly from the frontline workforce.
- Safety can be improved significantly through design by considering safety as a key requirement for the design rather than an add-on. Also involving operational parties in the design and the use of Building Information Modelling (BIM) and, newer gaming technologies to assist planning and training improves risk management, though complexity can increase.
- Working hours are very high in Hong Kong affecting quality of life and the ability to respond to programme challenges.
- Embracing technology. Understanding what is available (e.g. by presenting case studies) and encouraging uptake, particularly amongst the workforce who are often viewed as resistant to change.

To follow-up on the key issues raised and the outcome of the discussion that was generated the Lighthouse Club has committed to taking some actions on board and pushing progress. The other issues were passed to the conference attendees to consider with the message that 'managing risk needs action'.



Iris Chan



Steve Rowlinson



Nigel White



Mark Cuzner

### Live Feedback

For the first time the conference trialed a live feedback application (provided by TEAM NOTE) so that attendees could submit questions and feedback as the conference proceeded. The system worked well and is clearly going to form part of the conference of the future, however the LHC audience probably need some time to get to grips with such technology as responses were limited. An interesting point when viewed in conjunction with key points from the conference about embracing technology and encouraging uptake of technology.

### The Future

With the success of the conference it is now intended that health & safety and an integrated approach to conference themes will become a regular part of the Lighthouse Club calendar. Thanks again to all the sponsors, speakers, attendees and the organising committee for their support.



Mark Divers



Martin Cunningham



Ian Askew



Allan Chan



John Battersby



Roger Flanagan



# ACCURACY



## OUR SPECIALISM

Source talent for clients with accuracy

Present accurate job options for candidates

Contact us for an honest conversation  
Work with us for an accurate result

**WWW.3CSYNERGY.COM**

Singapore  
+65 6225 5404

Malaysia  
+603 2149 0971

Hong Kong  
+852 2117 3350

Recruiters for: Construction - Infrastructure - Civil - Real Estate - Design - Engineering - FM - Energy



# The Lighthouse Club HK steps back in time for their Annual Ball!

Kind and generous sponsors for the evening were Pinsent Masons, Peter Bennett Foundation, Gammon Construction, Hong Kong Disneyland, AEDAS, Turner Townsend & Brechin, PM International and HKCEC.

On Saturday 30th May, the HKCEC was awash with Cheongsams, Mao suits and salty sailors, The theme for this year's Annual Ball was "Hong Kong – A Step back in time"

Guests made a majestic entrance, having their photos taken sat in a vintage rickshaw complete with a soon to be exhausted salty sailor at the helm, against a Hong Kong street scene backdrop.

Richard Poulter officiated throughout the evening kicking off with some ice breaking audience participation games and a riotously entertaining game of "heads and tails". The lucky guest left standing was rewarded with a bottle of fizz!.

The "G&Tea House bar" cranked into action to serve wonderful No. 3 Gin G&Ts and Glenthrothes whisky courtesy of **Berry Bros and Rudd**.

HKCEC did a fabulous job of hosting the event and served up a sumptuous five course meal complemented perfectly with wines courtesy of **Pinsent Masons**.





---

Some of our guests made a splendid effort to dress “back in time” and for the 2nd year in a row, the Pinsent Masons table were awarded a best dressed prize for wearing coordinating costumes. Individual prizes went to a suave gent Steve Howarth of MTR and to our very own Elaine Man who looked simply adorable!

Ladies and gents made a mad dash for the plethora of Tombola prizes on offer to hunt down their winning prize number.

Peter Bennett Foundation once again stepped up to the plate and donated a fabulous 2 week stay in a luxury 8 bedroom villa in the Dordogne, France which was auctioned during the evening. Brett Wight from Alfasi Constructions came up trumps with the winning bid, a huge thank you to Brett!!

The top Raffle prize was a state of the art I-Pad Mini, generously donated by **Maxim Recruitment**. Other fabulous prizes were kindly donated by Hong Kong Disneyland, PM International and HKCEC. Guests mingled, chatted, fed and watered and then got funky on the dance floor to the most brilliant beats of **Kel & Paul Mob**.

A huge thank you goes to Richard Poulter, Michelle Poulter, Elaine Man and others who worked tirelessly to deliver this excellent event which raised HK\$105,000 on the night for the Lighthouse Club Hong Kong Benevolent Fund.



# Keys to success are in stable foundations, says To

Construction Industry Council chief Christopher To gave the Keys to Success talk to the Lighthouse Club Hong Kong's Women In Construction meeting on May 28.

The story of his climb up the ladder to success began in his teenage years and culminated in his contributions in the fields of arbitration and construction. Notable among his observations was that women tend to perform better as employees than men.

To illustrate, he told a tale of three candidates interviewed for a job, one of them was a woman. She had dressed properly for the interview and was more engaging than the male candidates during the interview. She got the job because she had showcased her abilities, To says.

The conclusion he drew was that women in Hong Kong, whatever line of work they are in, face little unfair employment discrimination on the grounds of gender.

The audience also heard an account of his rise to the most senior position in the Construction Industry Council. With a background in electrical and electronic engineering, and he moved into arbitration before entering the construction industry. He started from scratch with the CIC and says he weathered some early pessimism directed towards him from the Hong Kong Construction Association.

The city's construction industry now looks favourably on the CIC's endeavours to nurture excellence and coherence within the industry's ranks. The CIC's efforts gave rise to the Hong Kong

Green Building Council, a body dedicated to promoting greater sustainability in the city's built environment.

The lesson he learned was to take chances as they arose because opportunity knocked twice only for the fortunate few.

To says people tended to concentrate on the demands of others to the exclusion of their own needs. He encouraged people to attend to themselves before attending to others – much as the safety instructions in an airliner tell passengers to put on their own oxygen masks before helping their fellow passengers.

He emphasised the importance of stamina and health, saying that exercise helped and that good health gave people the strength to make their dreams come true. Also important to success were good relationships throughout families because they lend support, whether one succeeded or failed. To argued that work and family life had to be balanced correctly.

His presentation ended by encouraging the audience to dream big. Success depended on knowing what you wanted from life and in making a plan to get it. Learning to manage expectations was also important, he says, because setbacks can happen.

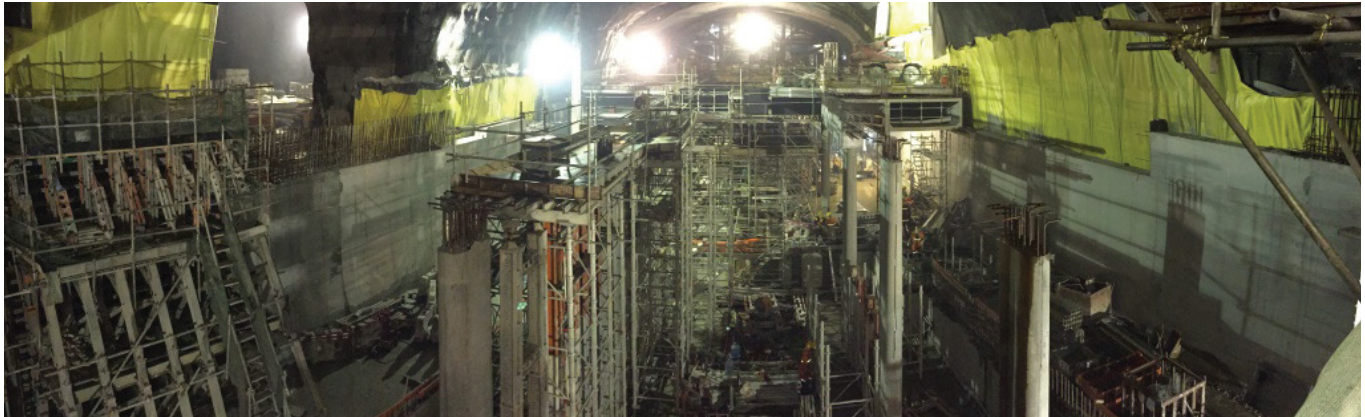
Such was the enthusiasm for this Keys to Success talk that the question and answer session went on longer than intended.

Members of the audience sought To's advice on making a success of their own lives and careers. It was food for thought as they networked over refreshments.



# Dustless Practice Elevates Safety and Productivity at MTR South Island Line (East) 901 Project

KLKJV battles dust and safeguards workers' health by implementing Dustless Innovation using Hilti SAFEset.



Dust is a bane for the construction industry. But in a tunnel where ventilating in an enclosed environment is especially challenging, removing dust is critical for both workers' health and productivity as well as quality construction.

Past deployments focused on removing dust that is created by construction practices, including drilling, grinding and cutting concrete in confined areas such as tunnels. It often involves filtering and funneling the air out of the environment, so workers do not have to heavily depend on their personal protective equipment. This often leads to longer project schedules, higher costs, man hours wasted in cleaning up areas for further construction work, for example cleaning up for rebar installation, and requiring workers to wear uncomfortable gear.

Hilti SAFEset technology takes a different tact: it concentrates on ensuring virtually zero dust is produced when drilling into concrete. According to Safety Manager of Kier-Laing O'Rourke-Kaden Joint Venture (KLKJV), the main contractor for the MTR South Island Line (East) 901 Project, the team was impressed with the technology, especially with the dustless drilling.

"Drilling, grinding or cutting concrete in confined areas such as tunnels can release large amounts of dust which can lead to long term health effects. Dust removal technology is welcome to protect people better from dust and speed up the project schedule."



## Efficiencies of Dustless Practice

Hilti SAFEset formed part of KLKJV's Dustless Practice, which was implemented for this project.

When using a traditional helix drill bit, you need wire brushes and compressed air to ensure the borehole is clean and the process meets up to designed loading performance.

With SAFEset, the hollow drill bit removes concrete dust by a connected vacuum cleaner as the borehole is drilled. This means that workers do not have to do further cleaning before the chemical mortar is injected. This ensures the rebar installation process and loading performance complies with international standards. An added benefit is a significant reduction of dust in the working environment.

A study of a similar project in Australia, Brisbane City Council's Legacy Way tunnel, demonstrated SAFEset's economic benefits when compared with traditional drills for installing N20 reinforcing bars bonded 270mm into segment:

- Concrete dust removed: about 33 metric tons
- Time saved per drilling hole and hole cleaning: about 55%
- Manhour saved for drilling 103,200 holes: about 2,866 hrs



## A dustless future

KLKJV agrees that Dustless Practice should be implemented in more job sites. They are driving awareness and improving uptake by making it easier for contractors to adopt new technology.

"Funding for award winners to enhance safety are offered to contractors to encourage smart use of technology to improve productivity and reduce human errors," said KLKJV.

"Dustless practice implementation at confined areas for MTR tunnel projects are best fit solution to increase productivity and improve visibility for enhancing safety," concluded KLKJV.

01. Louise Fraser, Senior Supervisor / Consultant at KLKJV, sees Dustless Practice raising productivity.

02. SAFEset technology ensures virtually no dust is produced when drilling into concrete.

## Tales from the underground make team shiver

The atmosphere turned decidedly chilly when Lighthouse Club Hong Kong Young Members descended into the bowels of Hong Kong Island to see how the latest stretch of the city's Mass Transit Railway was being built.

On the surface, the temperature was about 32 degrees Celsius on June 6. Deep underground it was about 15 degrees, owing to the ground-freezing technique used in digging the tunnels being built to carry the western extension of the MTR Island Line.

Our members learned that ground-freezing is used where soil needs to be held firm so it will not collapse during excavation or to

prevent contaminants from being leached away. Ground-freezing was also used at the western end of Hong Kong Island to prevent water seepage that could cause the ground at the surface to settle and buildings above to collapse.

Pipes are run through the soil, and calcium chloride is passed through the pipes, which freezes the ground. In some cases, the frozen soil can be as hard as concrete.

Ground-freezing has been used for at least 100 years and is commonly used in the United States and Japan.



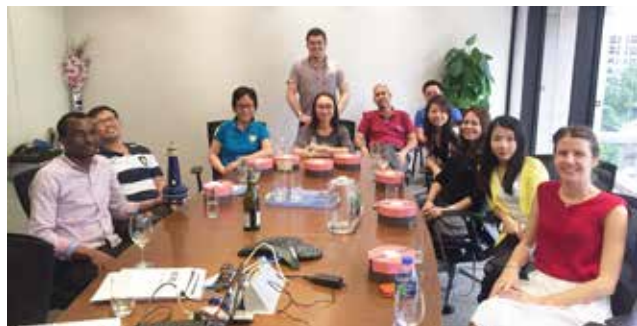
## How to sweeten a contract deal


With NEC3 contracts making their presence felt in Hong Kong, the Young Members Group came together on June 13 to hear a presentation by Sheona Campbell and Patrick Daley of Haley Tam & Co, in association with Berwin Leighton Paisner LLP, on the perks and pitfalls in this form of contract.

The presentation was well attended, and the open and collegiate atmosphere thoroughly enjoyed. The event included a round-table discussion, allowing all to voice their opinions on the effect of NEC3 contracts, and showing various professional perspectives.

The Young Members Group thanks Berwin Leighton Paisner for their support, not least for their generous gift of a box of artisanal Belgian chocolates from The Artist Chocolatiers to each member that attended.

The group is looking forward to future seminars on similarly tasty topics.





Feature  
packed  
for  
complete  
control



Cheops

## Construction Management Software

---

- + Project Budget
- + Procurement
- + Job Costing
- + Sub-Contract Management
- + Variation Management
- + Forecasting
- + Progress Claims
- + Accounts Receivable
- + Accounts Payable
- + General Ledger
- + Payroll
- + Dashboards
- + Document Management

---

[info@cssp.biz](mailto:info@cssp.biz) / [www.cssp.biz](http://www.cssp.biz)

Proven Internationally

**CSSP**  
CONSTRUCTION SOFTWARE

# Master Builders' safety forum gets technical

The theme of this year's Master Builders Association Malaysia (MBAM) safety and health conference was Safety and Health – Towards Technical Aspects. It was an apt and timely theme.

Technical planning for safety is a continual process. As a project progresses, a job safety technical analysis should be performed to make sure that the appropriate work and safety equipment is on hand, so that workers resist the temptation to use what may be inadequate equipment or take chances that will endanger them.

About 400 delegates attended the conference at the Sunway Resort Hotel and Spa on May 26 and 27. The conference's objectives were to promote the importance of safety and health by teaching best practices of the occupational safety and health management system

and policies to protect workers from occupational hazards and risks; to inculcate a sense of responsibility towards OSH in all walks of life; and to provide a medium for the exchange of ideas and best practices of technical aspects of OSH.

MBAM is committed to promoting training and education to meet the construction industry's needs.

When MBAM first held its site safety supervisor (SSS) training course, during its safety and health conference in 2011, 28 candidates completed the course. Now more than 3,000 people have successfully completed the course and the number of graduates is increasing rapidly. MBAM actively and continuously promotes the SSS course among its state affiliate members all over Malaysia.



This year's conference took a more global view of construction safety, a number of knowledgeable and experienced speakers sharing the latest in construction safety technology and best practices. Among the presentations were:

- Works-related Musculoskeletal Diseases by Dr Edrin Nazri Bin Abdul Rasib, SOCSO;
- How to Improve the Safety of Temporary Works in Construction by Ir Tan Yean Chin, deputy president of the Institution of Engineers Malaysia;
- OSH-related Competencies in Construction Industry by Dato' Ir Johari Bin Basri, former director-general, DOSH;
- Legal Aspects of Health and Safety in Construction (Overseas Experiences) by Jonathan Bellamy, barrister and arbitrator, 39 Essex Chambers;
- Safety Review of LRT Projects by Mazlan Bin Ahmad, head of construction unit, Syarikat Prasarana Bhd;
- The Lighthouse Club Asia-Pacific Region Benevolent Trust by Sr Ong Hock Tek, past president, Lighthouse Club Kuala Lumpur;
- Best Safety Practices in Oil and Gas Projects by Mohd Nujaimi Bin Abu Bakar, HSE manager, Malaysian Offshore Contractors Association;
- Industrial Accidents in Construction Industry (Case Study) by Abdul Aziz Bin Yahaya, deputy director, DOSH Selangor;
- CIDB Expert Panel Findings and Recommendations on Construction Accidents by Tuan Hj Szali Che Amat, senior manager, Technology Division, CIDB; and
- Heavy Lifting Plan by Chong Tsung Ming, senior manager, Gamuda Bhd (GPOS).

The highlight of the conference was the presentation of this year's MBAM Safety and Health Awards. The awards, a joint undertaking by MBAM and The Lighthouse Club Kuala Lumpur, are a way for the industry to acknowledge and reward the achievements of those that work tirelessly to enhance safety.



The winner of the Golden Helmet Award for Leadership in Safety and Health was Professor Tan Sri Dato' Dr Ir Jamilus Bin Hussein. Salleh Bin Damiri @ Hairun claimed the Safety and Health Award for Site Personnel (Letter of Commendation) and 1,000 ringgit cash prize.

The proud sponsors of the awards were Vinci Construction Grand Projects; Freyssinet PSC (M) Sdn Bhd; Al-Ambia Bhd; and 39 Essex Chambers.

Both MBAM and The Lighthouse Club Kuala Lumpur are grateful for the strong support given by the sponsors to promote and enhance safety and health.

The conference was closed by Yang Berusaha Tuan Hj Omar Bin Mat Piah, deputy director-general of Department of Occupational Safety and Health, on behalf of Deputy Minister of Ministry of Human Resources Yang Berhormat Dato' Sri Hj Ismail Bin Hj Abd Muttalib.



# Malaysian members search for answers

More than 40 people turned up for the Lighthouse Club Kuala Lumpur quiz night at the Guinness Anchor Tavern on May 7. The nine teams vied to answer correctly head-scratching questions set by quizmasters Alan Trelfa, Mike Dickinson and Ray Bolland.

Every year the club and the Master Builders Association Malaysia get together to present the MBAM Golden Helmet Award for Leadership in Safety and Health.

This year's winner was Professor Tan Sri Dato' Dr Ir Jamilus Bin Hussein, who collected the award at the MBAM health and safety conference in May (see report in this edition).

## The club's programme for now until September is:

August 6, 6.30pm – monthly get-together;  
September 3, 6.30pm – monthly get-together; and  
September 19 – Lighthouse Club Kuala Lumpur Annual Dinner.

The club roster had grown to contain the names of 71 individual members and four corporate members by June.

The club committee now comprises:

Roderick Noble, president;  
Stephen Healey, vice-president;  
Lim Ling Ling, treasurer;  
Bert de Munck, secretary;  
Clarise Low, assistant secretary;  
Evan Ho; HT Ong; Anthony Edwards; and Ravendran Rasalingam.  
Find out more at [www.facebook.com/LighthouseClubKL](http://www.facebook.com/LighthouseClubKL)

# A pilgrim's tale

Pak Kuen Chan, global rubber technical consultant to The Lighthouse Club Kuala Lumpur corporate sponsor Weir Minerals, has succeeded in his endeavour to complete the Kuala Lumpur-Maran ultra-marathon walk. The two-and-a-half-day, 204 km walk is a pilgrimage in celebration of Lord Murugan and an opportunity to raise money for the club.

Here, Pak Kuen tells his own story, beginning where his pilgrimage started, at the golden statue of Lord Murugan by the entrance to the Batu Caves temple, and ending where it finished, at the Sri Marathandavar Temple in Maran in Pahang.

"Following a short prayer by a priest, we were flagged off at 3.30am, heading to our first destination, in Termeloh. The first pit stop was at the entrance of Karak Tunnel, where refreshments and a light lunch were served.

"It was a lonely walk most of the time, as the approximately 300 participants gradually spread out, walking at different speeds. The most challenging time was under the hot afternoon sun of almost 40 degrees along the Karak highway.

"The road was scorching hot amid intermittent rain, while vehicles were passing at breakneck speed. I covered 80 km on day one, arriving at the first temple at 6.30pm, after 15 hours.

"On day two, I suffered blisters on the toes and first aid was needed. Gathering the last bit of my reserves, I completed the full distance of 45 km on day three to arrive on time to join the Hindu ceremony of carrying milk pots at the Maran temple.

"Throughout the journey, everything was back to basics, with minimal cleaning and sleeping facilities. However, ample vegetarian meals and refreshments were served by volunteers.

At night time we slept in the halls of temples, using our own sleeping bags and waking up at 2am to get prepared for breakfast and the next day."

Pak Kuen's endurance raised 6,383 ringgit for the club. Pak Kuen, Weir Minerals managing director Jon Woollins and Weir Minerals human resources director Adam Abdullah presented cheques for this sum to club vice-president Stephen Healey and secretary Bert de Munck in the company's head office in Malaysia.





# Bunnies bounce into fundraising action



The Lighthouse Club Singapore got into the seasonal spirit at its gathering before Easter, arranging an Easter egg hunt and inducing two bunnies to sell eggs to help fill the club's coffers. Graham Hartland put on a meat raffle to top off the get-together.

It was recently Singapore's turn to host The Lighthouse Club Asia-Pacific region committee meeting. The meeting happily coincided with a fundraising event: the curry quiz night held at the Indian Association.

The competing teams sent their intellects into battle against a horde of cunning questions set by our intrepid president and quizmaster, who was no doubt ably assisted by a certain Mr Google.

From the arboreal to the automotive, you name it, we had an alphabet soup of categories, flavoured with a few tests of sporting knowledge. It was perhaps fitting, in view of the presence of Asia-Pacific region committee members, that the winners were a team of interlopers from Hong Kong: Janey's Concubines. Make what you will of that name.

Efforts to involve families more closely in the club's activities gave rise to an amazing race by MRT. The teams scampered around Singapore's ever-expanding urban railway network, seeking to outdo

each other. The race made for a great day out and raised a good amount of money for the club.

The club's get-togethers are held on the second Thursday of each month, generously supported by our sponsors and well attended by members.

June saw a new venue: the Wala Wala Café Bar in Holland Village. Wala Wala has become a committed supporter of the club, not only hosting the most recent gathering, but also supporting other events such as the amazing race.

It was back to the Fern & Kiwi, a regular venue for gatherings, for the club's July get-together.

The coming months will see a number of events held, including a quiz night to be held at the Thai Restaurant at the Champions Golf Course.

The annual charity golf tournament will be held at the Jurong Country Club, offering a last-chance to play a round there before the course is redeveloped as the Singapore terminus for the high-speed rail link to Kuala Lumpur. The club's Annual Dinner and Dance will be held in November.



# Bangkok upholds the torch of learning

The Lighthouse Club Bangkok concentrates on raising funds to help support Father Joe Maier of the Human Development Foundation and the Mercy Centre provide teachers to the Prakkasamai School in Samut Prakan province.

The school educates the children of workers employed on nearby construction sites. About 860,000 baht has been donated to the foundation so far.

The monthly networking meetings continue with the support of Bangkok's construction companies. The meetings are held at The Clubhouse Bar in Sukhumvit Soi 23. The venue has an area upstairs, which affords a certain amount of privacy, and a sound system that is useful for sponsors when they present their goods or services.

The club also arranges a late lunch on the final Friday of each month, which is held at The Clubhouse Bar or another among a select group of Bangkok venues.

Members of the Chapter's Lighthouse Golf Society play one game a month. Their membership subscriptions and fines contribute towards club funds.

All of the money raised at these events goes into a bank account administered by RSM Advisory (Thailand) Ltd.

This year's event sponsors are:

- Kawarau Consulting;
- Radcon;
- RSM Advisory;
- The Clubhouse Bar;
- Sika;
- Hafele;
- Ariya Pura;
- Anoogoprinting; and
- AES.

The Lighthouse Club Bangkok committee comprises:

- Jon Prichard, chairman;
- John Pollard, secretary;
- Gareth Hughes, treasurer;
- Pat Gan-Hobbs;
- Danny Doolan; and
- Mike Holloway.



# Lighthouse Club Macau nearly 10 years old

The Lighthouse Club Macau will be ten years old in October and preparations are in hand for a celebratory Golf Day and dinner on 16 October.

The Lighthouse Club Macau now has more than 200 members, including 22 corporate members and 107 individual members and our membership continues to grow.

We have enjoyed several social events in the past few months.

In March one of our local contractors and Lighthouse Club supporters arranged and sponsored their first Annual Charity Golf Day and dinner in nearby Hengqin Island. The event was very well attended and Min Da donated MOP200,000 to Lighthouse Club Macau. Min Da's generosity is highly appreciated and everyone enjoyed the golf and dinner. Highlight of the golf was the attendant drone and the resultant camera footage which was replayed at the dinner and highlighted our good and not so good players!

In April we held our Annual Dinner in the Grand Hyatt hotel Macau. Nearly 350 people attended and thanks go to our committee and generous sponsors.

In addition to these major events we have held our sponsored monthly functions, usually on the second Wednesday of the month. 80-100 people usually attend. Thanks go to our sponsors:

Sika Hong Kong Limited

- Top Builder Group
- Lai Si Construction
- Circle Engineering Company Limited
- T Marble Design Gallery Limited
- Altitech Limited
- Hilti (Hong Kong) Limited

That is the good news, but unfortunately our Benevolent Fund has been active due to there having been 5 construction fatalities in Macau this year. Lighthouse Club Macau donations have been made to the families of the deceased and whilst our efforts are appreciated it is no substitute for the suffering experienced when the husband, father, breadwinner dies. It is a sad reminder of our high risk construction industry and reinforces the need for continued vigilance by all of us.



## We're here to help when things don't go as planned.

Contract Dispute Consultants has built an impressive track record in resolving complex construction disputes.

Call us on **852 3180 9531** to see how we can help you.

15th Floor, 100 Queen's Road Central, Hong Kong  
t (852) 3180 9531 f (852) 3180 9399 e info@contractdispute.com.hk



[www.contractdispute.com.hk](http://www.contractdispute.com.hk)

# Australia News

## Victoria develops a taste for Belgium

The Melbourne Chapter of the Lighthouse Club is developing strongly and making a name for itself as a rallying point for professionals in Victoria's construction industry. We are confident that attendance will continue to grow this year, and that the monthly get-togethers will become compelling events, fixed in everybody's calendars.

Thanks to the generous sponsors of our recent meetings:

March 19 – Aqenta Consulting;

April 16 – Hill International;

May 14 – Holman Fenwick Willan Lawyers; and

June 11 – Norton Rose Fulbright Lawyers.

The Chapter is keen to participate in fundraising initiatives in conjunction with chapters in other cities. We are hoping to see a number of opportunities to promote and assist with events in the coming months.

The Chapter acknowledges our able and dedicated committee members and supporters, and extend our thanks to them.

The Melbourne Chapter meets every second Thursday of the month at the Belgium Beer Café, 5 Riverside Quay, Southbank, Melbourne, between 5.30pm and 7.30 pm. Everyone is welcome to attend.



Lawyers and quantity surveyors: easily pleased

## Life begins at 40 in the West

The number of members of the Western Australian Chapter of the Lighthouse Club has surged this year, with an average of 40 people showing up at each get-together. Our thanks go to the meeting sponsors in April, May and June: Hill International, formerly McLachlan Lister, FTI Consulting and TBH.

The Norwegian Geotechnical Institute (NGI) Perth has stepped forward to sponsor the July meeting and Contract Solutions International is September's sponsor.

The WA Chapter is pleased to announce that the inaugural Lighthouse Club Australia Winter Ball will take place on August 21. We have booked a live band, a pianist and DJ for the evening – all to be lead by an accomplished master of ceremonies. The event has been graciously supported by the business community, with generous donations ranging from jewellery to hotel stays and works of art.

While the Chapter is excited to launch such a prestigious event, we would like your support. All are welcome, but the number of tickets is strictly limited. Send ticketing inquiries to [winterball2015@lh-wa.org](mailto:winterball2015@lh-wa.org).

Some of the funds raised on the night will be donated and the Chapter expects to announce the beneficiary soon.

Some upcoming dates for your diary:

July 30 – Monthly meeting sponsored by NGI Perth; and

August 21 – The Inaugural Lighthouse Club Australia Winter Ball.

Sincere thanks to the sponsors, each of the businesses and members that have made the Chapter so successful.



Conversation engrosses members in Perth

### NSW atmosphere brings them in

The Sydney Chapter of the Lighthouse Club has moved its monthly get-togethers to the last Thursday of each month, meaning the new dates for the remainder of this year's meetings are

July 30, August 27, September 24, October 29 and November 26.  
The venue is The Rooftop Terrace, Metropolitan Hotel, 1 Bridge Street, Sydney, from 6pm to 9pm.

So far this year, the attendances have been healthy, with an average of 25 to 30 people from across the industry's disciplines showing up. The relaxed atmosphere of the meetings and the fantastic venue in the central business district bring a warm response from members.

The Chapter would like to thank the sponsors of its recent meetings:

February – Total Contract Management  
March – Aquenta Consulting  
April – TBH  
May – Mace

The growth in membership and the contributions towards the monthly raffle has seen the Chapter increase its contributions to the Australian account this year.



A proud sponsor greets a happy winner

### Our light to shine in South Australia

A small committee is making arrangements for a Lighthouse Club get-together in Adelaide. Watch this space.

Find out how to get in touch with the Lighthouse Club Australia at [www.lighthouseclubaus.org](http://www.lighthouseclubaus.org)

### They're queuing up in Queensland

Members of the Brisbane Chapter of the Lighthouse Club say that if one industry professional reconnects with another in Queensland, it is probably because they met at a Chapter meeting or event – that's how established and influential the Chapter is.

The Chapter is so well-known and highly regarded that it has a long waiting list of sponsors for its monthly gatherings. The coffers are replenished at a healthy rate.

The Chapter would like to thank the recent meetings sponsors for their generosity:

March 19 – CBP Lawyers;  
April 16 – Driver Trett;  
May 21 – McInnes Wilson Lawyers; and  
June 18 – Royal Institution of Chartered Surveyors Oceania.

The Chapter is donating A\$5,000 towards a training programme designed to prevent suicides in construction and raise awareness in the community.

The programme is timely because it anticipates the danger likely to be posed by the winding down of the mining boom in Queensland. See [www.matesinconstruction.org.au/QLD](http://www.matesinconstruction.org.au/QLD) for details.

The efficient and devoted members of our committee and their supporters have earned our thanks.

The Chapter meets every third Thursday of the month in the PAV Bar of the Stanford Plaza Hotel in Brisbane, from 5.30pm to 7.30 pm. All are welcome.



A visitor from Britain wins a raffle prize



Viewing your project from a different perspective...

**Aspect Asia** has a wealth of experience in providing specialist skills in the commercial management of projects and in the resolution of a wide range of construction disputes.



- ▲ Commercial and contractual advice
- ▲ Preparation, defence and management of claims for time and costs



- ▲ Expert Witness services
- ▲ Dispute Management



- ▲ Forensic Planning and Delay Analysis
- ▲ Commercial and Project Management
- ▲ Quantity Surveying

Contact : Nick Adams

**Aspect Consulting Asia Ltd**

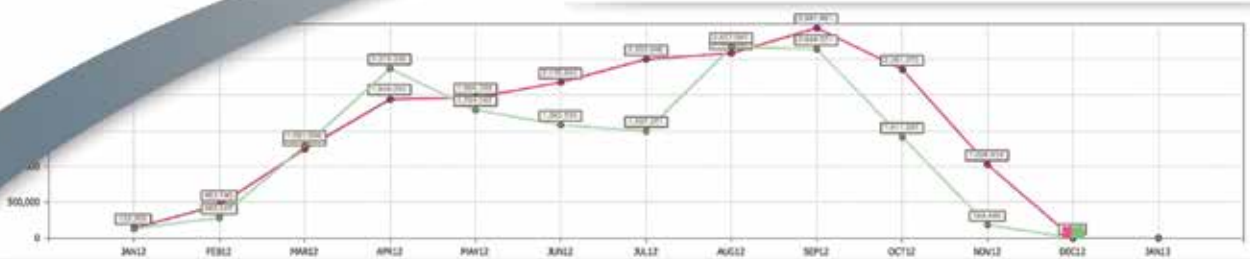
Units A & B, 10/F, Neich Tower, 128 Gloucester Road, Wan Chai, Hong Kong

Tel: +852 2827 6068 Fax: +852 2827 6168 E-mail: info@aspectasia.com.hk

Website: www.aspectasia.com.hk



**Where will your project be tomorrow?**  
+ Earned Value & Forecasts



...Does everything your ERP system does not do.

Ask us about:

**Project Management Project Accounting**  
**Document Management Workforce Management**

*Projection Group... We Own, Develop and Deliver.*

www.projection-group.com

Hong Kong: +852 2973 6243  
Australia

Philippines: +63 917 559 6525  
Hong Kong Philippines

Email: info@projection-group.com  
Middle East

Half mask  
SR 100



100% Made in Sweden

## NEW MODEL JUST RELEASED!

Now, three sizes to choose from!



NEW Model now available



Alternative head harness also available

Tel: +852 2541 0378 Email: sales@indehk.com www.sundstrom.hk

# Sundström



holman fenwick willan **hfw**

## HFWS GLOBAL CONSTRUCTION TEAM IS HERE TO HELP



Holman Fenwick Willan is a global law firm assisting businesses in the construction sector. Our lawyers advise on a range of projects, including energy, transportation, major infrastructure and commercial developments.

For more information about how we can help your business, please contact:

**Nick Longley**

Hong Kong/Melbourne  
T: +852 3983 7680/  
+61 (0)3 8601 4585  
E: nick.longley@hfw.com

**Vincent Liu**

Hong Kong  
T: +852 3983 7682  
E: vincent.liu@hfw.com

**Colin Dodd**

Hong Kong  
T: +852 3983 7681  
E: colin.dodd@hfw.com

**Chanaka Kumarasinghe**

Singapore  
T: +65 6411 5314  
E: chanaka.kumarasinghe@hfw.com

Lawyers for international commerce

[hfw.com](http://hfw.com)

São Paulo London Paris Brussels Geneva Piraeus Dubai Hong Kong Shanghai Singapore Melbourne Sydney Perth

# Lighthouse Club - Asia Pacific Region Sponsors

Aedas



ADR | Partnership  
Partners in Alternative Dispute Resolution



AON



BACHY SOLETANCHE  
法國地基建築公司

BESTJOIN

BIMS  
Group Limited

BK Asia Pacific

BERWIN  
LEIGHTON  
PAISNER



俊和發展集團  
CHUN WO DEVELOPMENT HOLDINGS LIMITED

CLYDE & CO  
其禮律師行

coins  
Construction Industry Solutions



DEACONS  
的近律師行



FRAGOMEN



Gammon

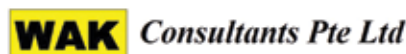
GOLIK  
高力集團

HILL  
Hill International



協興  
HIP HING  
新創建築集團成員  
Member of NWS Holdings





# Forthcoming Events

of Summer/Autumn 2015

## August

### Wednesday 12

Macau Monthly Social Gathering  
R-Bar, G/F Hard Rock Hotel, City of Dream, Taipa

### Thursday 13

Ho Chi Minh City Networking Drinks  
Orient Bar, 24 Ngo Van Nam, Ho Chi Minh City

### Thursday 13

Melbourne Monthly Get Together  
Belgium Beer Cafe, 5 Riverside Quay, Southbank

### Singapore Get Together

D'Bell (Hong Lim Park), 43 North Canal Road

### Friday 14

Singapore Charity Golf Day  
Jurong Country Club, 9 Science Centre Road

### Wednesday 19

Bangkok Monthly Midweek Networking  
The Clubhouse, Sukhumvit soi 23

### Thursday 20

Brisbane Monthly Get Together  
The Pav Bar & Courtyard, 39 Edward Street

### Friday 21

Perth Black Tie Charity Dinner  
Parmelia Hilton Perth, 14 Mill Street

### Saturday 22

Asia Pacific Region Committee Meeting  
Parmelia Hilton Perth, 14 Mill Street

### Thursday 27

Manila Monthly Social Event  
Den of the Marriott Hotel, No. 10 Newport Boulevard,  
Newport City Complex

### Sydney Monthly Get Together

The Rooftop Terrace, Metropolitan Hotel,  
No. 1 Bridge Street

### Friday 28

Bangkok Monthly last Friday lunch  
Venue tbc

## September

### Thursday 3

Kuala Lumpur Monthly Get Together  
El Sid's, Damansara, 1 Jalan Setiapuspa

### Friday 4

Hong Kong Monthly Get Together  
Insiders, 17 Fenwick Street, Wanchai

### Wednesday 9

Bangkok Monthly Midweek Networking  
The Clubhouse, Sukhumvit soi 23

### Macau Monthly Social Gathering

R-Bar, Hard Rock Hotel, City of Dream, Taipa

### Thursday 10

Ho Chi Minh City Networking Drinks  
Orient Bar, 24 Ngo Van Nam, Ho Chi Minh City

### Thursday 10

Melbourne Monthly Get Together  
Belgium Beer Cafe, 5 Riverside Quay, Southbank

### Saturday 12

Bangkok Monthly Saturday Golf  
Chuan Chuen Golf Course

### Thursday 17

Brisbane Monthly Get Together  
The Pav Bar & Courtyard, 39 Edward Street

### Manila Monthly Social Event

Hub of the Marriott Hotel, No. 10 Newport Boulevard,  
Newport City Complex

### Friday 18

Hong Kong Contractors' Dinner and Safety Awards  
City Hall Maxim's Palace, Central

### Sunday 20

Singapore F1 Night  
Shallots Restaurant, 6 Raffles Boulevard #02-101 Marina Square

### Thursday 24

Sydney Monthly Get Together  
The Rooftop Terrace, Metropolitan Hotel, No. 1 Bridge Street

### Friday 25

Bangkok Monthly last Friday lunch  
Venue tbc

## October

### Thursday 1

Kuala Lumpur Monthly Get Together  
El Sid's, Damansara, 1 Jalan Setiapuspa

### Saturday 3

Asia Pacific Region Committee Meeting  
Kuala Lumpur

### Thursday 8

Ho Chi Minh City Networking Drinks  
Orient Bar, 24 Ngo Van Nam, Ho Chi Minh City

### Melbourne Monthly Get Together

Belgium Beer Cafe, 5 Riverside Quay, Southbank

### Thursday 8

Singapore Get Together  
Fern & Kiwi (Clark Quay), 3C River Valley Road

### Friday 9

Hong Kong Monthly Get Together  
Insiders, 17 Fenwick Street, Wanchai

### Saturday 10

Bangkok Monthly Saturday Golf  
Chuan Chuen Golf Course

### Wednesday 14

Bangkok Monthly Midweek Networking  
The Clubhouse, Sukhumvit soi 23

### Thursday 15

Brisbane Monthly Get Togethers  
The Pav Bar & Courtyard, 39 Edward Street

### Manila Monthly Social Event

Hub of the Marriott Hotel, No. 10 Newport Boulevard,  
Newport City Complex

### Friday 16

Macau Golf Day for 10th Anniversary of  
Macau Branch  
Venue tbc

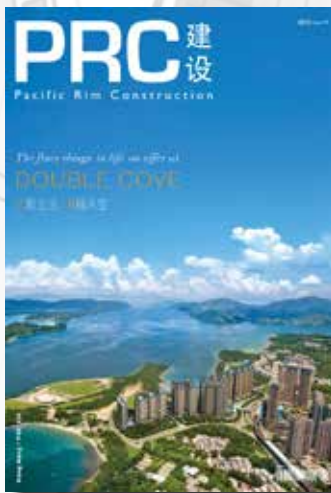
# 100% committed to serving the local building industry

EDITING

ROF Media is the only Hong Kong based Media Group focused solely on building and construction. Our services include the development of individual tailor-made solutions through to the design and production of entire publications. All to aid dynamic communication.



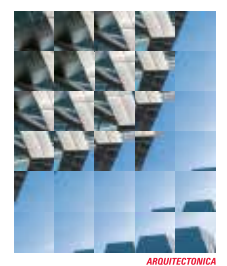
ONLINE



DESIGN



PRINTING



PHOTOGRAPHY



**STAY IN TOUCH**

Subscribe to  
ROF MEDIA  
E-Newsletter

**ROF Media**

+852 3150 8988  
info@rofmedia.com  
www.rofmedia.com

The Hilti logo is displayed in white, bold, uppercase letters on a red rectangular background in the top right corner of the advertisement.The background of the advertisement is a large-scale construction site. In the foreground, there are complex metal scaffolding and rebar structures. In the middle ground, several large tower cranes are visible against a clear blue sky. In the background, an airport tarmac is visible with several commercial airplanes, including one with a green and white livery. The overall scene is one of active industrial construction.

# ELEVATE SAFETY AND PRODUCTIVITY WITH CORDLESS PRACTICE.

Gammon Construction uses Cordless Practice to reinforce safety and productivity at the Hong Kong International Airport Midfield Concourse project. Cordless Practice, using our cordless tools, reduces wire-related incidents, improves productivity, and cuts labour costs by eliminating electrical cable management.

In Singapore, Grace Assembly of God development project, Gammon adopts cordless and dust removal system to reduce dust exposure of workforce and maximize productivity.

To learn more, visit us at [www.hilti.com.hk](http://www.hilti.com.hk) or [www.hilti.com.sg](http://www.hilti.com.sg)

**Hilti. Outperform. Outlast.**

