

the Lighthouse

Events | Fundraising | Industry News

Autumn 2015

A Review of Macau's Construction Market

明建會

The Lighthouse Club Asia Pacific Region

Australia | Cambodia | Hong Kong | Macau | Malaysia | Philippines | Singapore | Thailand | Vietnam



Aliis Cum Humanitate



CONSTRUCTION INDUSTRY COUNCIL
建造業議會

IA CIC
INNOVATION
AWARD
建造業議會創新獎

Sustainable innovation drives transformation
建築創新 持續轉型



With its commitment to drive for unity and excellence of the construction industry of Hong Kong, the Construction Industry Council (CIC) launched the CIC Innovation Award this year to recognise new technologies and scientific breakthroughs achieved by the academia and construction industry practitioners.

建造業議會致力團結香港建造業以達至精益求精，今年設立「建造業議會創新獎」，旨在表揚在創新技術及科學研究上有傑出成就的學術及建造業界人士。

Awards
獎項

Academia & Industry Practitioners
學術組及業界從業員組

Local 本地

International 國際

Grand Prize
創新大獎

HK\$300,000

HK\$300,000
(~US\$37,500)

1st prize
第一名

Academia
學術組

Industry Practitioners
建造業界
從業員組

HK\$150,000

HK\$150,000

2nd prize
第二名

HK\$100,000

HK\$100,000

Young Innovator Award
青年創新獎

HK\$50,000

HK\$50,000

Details are available on
詳情請瀏覽



(852) 2100 9037 /
(852) 2100 9079

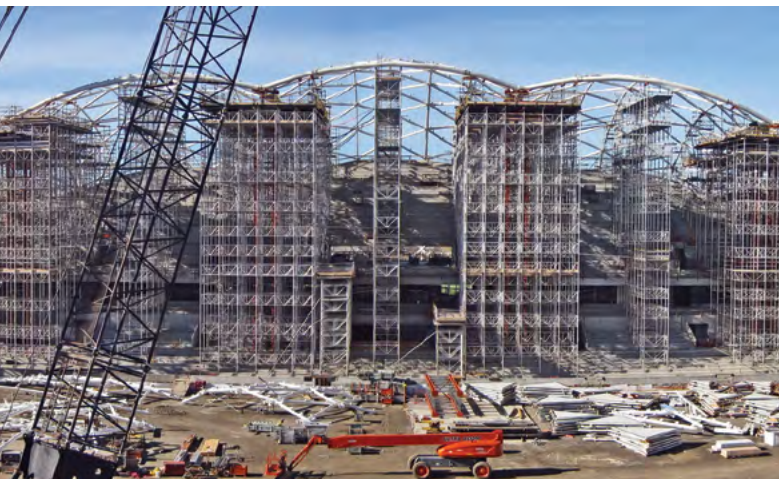


(852) 2100 9090



innoaward@hkcic.org

www.hkcic.org/cicinnoationaward2015



Bringing
structures
to life

- RMD Kwikform Asia Pacific provides innovative, productive and safe formwork, shoring and scaffolding systems.
- We are part of a worldwide company that provides a high level of technical and sales support coupled with the latest generation formwork and shoring systems.
- Our extensive product range enables us to provide the best solution to assist you with your next project.
- Our Sales Team consult with their customers to provide the best solution at a competitive price and they provide support throughout most aspects of the project.
- Our renowned engineering capability enables us to work together with our client's construction team to develop, design, and detail cost-effective engineered solutions that are practical, productive and safe.

RMD Kwikform Philippines, Inc

Units 2406-2409 Raffles Corporate Center,
F. Ortigas Jr. Ave., Ortigas Center,
Pasig City, Phils. 1605
Tel: +632-696-7635
Fax: +632-661-6456
E-mail: rmd.philippines@rmdkwikform.com

RMD Australia

66 Bennet Ave, Melrose Park
Adelaide, South Australia 5039
Tel: +61 8 8179 8200
Fax: +61 8 8179 8201
Email: rmd.australia@rmdkwikform.com

RMD Kwikform Hong Kong Ltd.

22/F, Excel Centre,
483A Castle Peak Road,
Cheung Sha Wan, Kowloon
Hong Kong
Tel: +852 2415 4882
Fax: +852 2745 0232
Email: rmd.hongkong@rmdkwikform.com

RMD Kwikform Singapore Pte Limited

29 Tanjong Penjuru (S)
609026 Singapore
Tel: +65 6863 4252
Fax: +65 6863 4275
Email: rmd.singapore@rmdkwikform.com

Chairman's Message

Since our first Asia Pacific regional meeting in Singapore for the 2015/2016 year, I am pleased that we were able to follow up with our first regional meeting in Australia, namely in Perth (Western Australia) where the chapter is very active. This was preceded by the first annual ball of the Perth chapter and the event was well attended. I hope that next year we will be able to hold a regional meeting in another Australian venue. I would like to congratulate Paul Roberts on the progress being made with the Lighthouse Club activities in Australia, where chapters have been additionally established in Brisbane (Queensland), Melbourne (Victoria), and Sydney (New South Wales).

Our next regional meetings are in Kuala Lumpur in October and Manila in November and I look forward to meeting Lighthouse Club members in both these countries and to better understand their activities.

We now have a proposal on the table to make the Lighthouse Club a global entity. This proposal will need careful consideration over the coming months so that we can arrive at a decision and an appropriate action plan.

Congratulations to the Macau branch who are celebrating their tenth anniversary in October 2015.

2015 and 2016 will also see increased activity related to the 40th anniversary of the Lighthouse Club in Hong Kong and the 60th anniversary of the Lighthouse Club in United Kingdom, both occurring in 2016.

I would like to thank Steve Tennant for his input into the re-launch of the Lighthouse Club Asia Pacific Region website www.lighthouseclub.asia/. Initial input and regular updating are now needed by our Asia Pacific branches to ensure the website's success.

Keith Buckley
Chairman
The Lighthouse Club,
Asia Pacific Region



About The Lighthouse Club

The Lighthouse is the magazine of the Lighthouse Club Asia Pacific Region, which was established in 1998. The Lighthouse Club was originally established in England in 1956 and first came to Asia in 1986 with the formation of a Branch in Hong Kong.

The aims of the Lighthouse Club worldwide are to promote good fellowship amongst its members who work in or are associated with the construction industry and to provide charitable assistance to those in need within the construction industry and to their dependents in qualifying cases.

The Lighthouse Clubs that were in existence in 1998 in Asia agreed to the formation of the Lighthouse Club Asia Pacific Region with the following objectives:

- To support and where necessary co-ordinate the work of charitable assistance undertaken by the branches of the Lighthouse Club within the Asia Pacific Region
- To promote the establishment of further autonomous branches of the Lighthouse Club in the Asia Pacific Region
- To promote good fellowship between the members and branches of the Lighthouse Club in the Asia Pacific Region

In addition to the charitable works of the individual branches of the Lighthouse Club, the Lighthouse Club Asia Pacific Region has two related Hong Kong based charities which provide charitable assistance throughout the Asia Pacific region:

- The James Battersby Lighthouse Club Educational Trust which provides assistance for education and training to qualifying young persons
- The Lighthouse Club Asia Pacific Region Benevolent Trust which provides assistance to relieving poverty and financial need to persons currently or previously employed in the building and civil engineering industries and allied trades where such persons and/ or their dependents are suffering hardship as a result of accident, disability or ill health.

For more information and membership / sponsorship enquiries please contact the Membership Secretary or Deputy Chairman of the Lighthouse Club Asia Pacific Region at lighthousehk@gmail.com. To advertise in this magazine please contact publisher@rofmedia.com or lighthousehk@gmail.com

Official website : www.lighthouseclub.asia
 The Lighthouse is online at www.issuu.com/rofmedia



The Lighthouse Club Asia

THE LIGHTHOUSE Autumn 2015

The Lighthouse Club Asia Pacific Region
 Suite 1901-2, Hopewell Centre,
 183 Queens Road East, Wanchai, Hong Kong

Tel : +852 2736 9885
 Fax : +852 2687 2252
lighthousehk@gmail.com

Administration Secretary : Ms Elaine Man

Editorial Committee :
 Steve Tennant
 John Battersby
 Vincent Connor
 Mike Staley
 Elaine Man

Published by ROF Media

Publisher : Mike Staley
 Designer : Parnell Chan

E : publisher@rofmedia.com
 T : +852 3150 8988

Executive Committee

Chairman
 Keith Buckley
keith.buckley@cotai.venetian.com.mo

Immediate Past Chairman

Willie Kay
willie@wakmc.com

Chairman Elect

Bob Park
rmpark50@gmail.com

Deputy Chairman

John Battersby
johnbattersby@bkasiapacific.com

Secretary

Steve Tennant
stevetennanthongkong@gmail.com

Acting Treasurer

John Battersby
johnbattersby@bkasiapacific.com

Membership Secretary

Jim Chessell
jchessell@bkasiapacific.com

Bangkok

Gareth Hughes
gareth.hughes@rsmthailand.com

Ho Chi Minh City

Colin Johnston
cjohnston@bkasiapacific.com

Hong Kong

John Battersby
johnbattersby@bkasiapacific.com
 Steve Tennant
stevetennanthongkong@gmail.com

Bob Park
rmpark50@gmail.com

Kuala Lumpur

Rod Noble
roderick.noble@39essex.com

Macau

Keith Buckley
keith.buckley@cotai.venetian.com.mo

Manila

Guenter Taus
guenter.taus@jec.com
 Sam Powell
samuel.powell@hmrphils.com

Phnom Penh

Euan Ritchie
ritchie@artisansurfacefinishes.com

Singapore

George Wall
gwall@asgardprojectsolutions.com
 Jim Chessell
jchessell@bkasiapacific.com

Australia

Paul Roberts
Paul.Roberts@aquenta.com.au
 Nick Longley
nick.longley@hfw.com

In This Issue

6-9 Benevolence

- [6-7] Fundraising at height
- [10-11] Manila increases support of student scholars for fiscal year 2015/2016

Regional Branch News

- 31 Hong Kong
- 35 Macau
- 36 Kuala Lumpur
- 40 Manila
- 42 Singapore
- 44 Australia

Sponsors

- 46 Lighthouse Club Asia Pacific Region Sponsors 2015

48 Events

Calendar of forthcoming member's events November-December



10-17

Market Review Macau

Keith Buckley reports on the current state of the Macau Construction Market



18-29

Contractors Dinner and Safety Awards 2015

Contractors and Subcontractors attended major industry night in record numbers

A heightened fund-raising effort

Standing more than 4,000 metres above sea level, Malaysia's 15 million-year-old Mount Kinabalu is one of the tallest mountains in South-East Asia. Its age and stature have made it a popular destination for climbers, with the first recorded ascent made by British colonial administrator Hugh Low who reached the summit plateau in March 1851.

Fast forward 164 years and this most sacred mountain continues to attract climbers who typically take two days to reach the summit at Low's Peak and experience the magnificent sunrise.

Hong Kong resident Diana White recently did just that – and raised \$HK33,000 in the process for The Lighthouse Club. The Club provides financial assistance, welfare and legal support to the construction community to relieve hardship and stress.

Diana did the climb with a group of friends who trained around the hills in Clearwater Bay. "We did train for the climb, especially as I was asking for sponsorship. I wanted to make sure that I did a good job," she said.



Diana and her friends opted to make the 8 km climb in two days, staying at Laban Rata Resthouse. "Every group has to take a local mountain guide and stop overnight at the huts at 3,272 metres," she said.

"While the huts are very basic, I thought the food was surprisingly good. Everyone leaves the huts at around 3am for a freezing cold and windy climb to the summit for sunrise. Happily all four of us made it."

Diana said her group then started the descent, stopping for breakfast at the huts. "We were very motivated to get back to our hotel."

Poignantly, in the wake of Diana's climb, the area around Mt Kinabalu was damaged by an earthquake and massive landslide in June which killed 18 people, including hikers and guides.

The earthquake struck on June 5 with a magnitude of 6.0. It was the strongest earthquake to affect Malaysia since 1976.

"Sadly since we did our climb, there has been the earthquake in which 18 people died, including the school children from Singapore," Diana said.

The mountain, a World Heritage Site, is located in the Sabah region on the island of Borneo and is one of the most important biological sites in the world, with between 5,000 and 6,000 species of plants, 326 species of birds and more than 100 mammalian species, including the orangutan.

The mountain is temporarily closed to climbers while repairs and rehabilitation continues.



Fund Raising / Benevolence

Lighthouse Club Manila now has 31 scholars for the year 2015-2016, which includes 7 new scholars who were approved for this year. 23 students are under the support of the Asia-Pacific Region and 8 of them are being supported under the James Battersby Educational Trust.

The Club also committed to assisting Ms Janeth Sulit, a QS Engineer from Leighton Contractors with the cost of long-term medication. Janeth is the fourth child in the family of seven siblings. She was born in Batangas, where she was able to finish her secondary education before taking a B.S. in Civil Engineering degree at Adamson University in 1991. She attended Adamson as a working student. Following graduation in March 1996 she was able to pass a civil engineering board examination in November of that year and then commenced working in 1997.

To the Lighthouse Club,

It's really great to feel that there are some people out there that cares for someone like me despite that almost all of you rarely know me personally. Dealing with my battle with my disease is really tough and depressing, but with your support and prayers, hope, strength and courage pours in me to continue fighting to survive. Your support makes my struggle became much easier, lessens my burdens emotionally by eliminating the problem of thinking on how will I support my expenses for my maintenance medications.

Now I proved that despite of my situation, blessing from our LORD is still very visible and makes me feel that I am still a fortunate one. Through you, HE proves that HE really loves me and never left me during my hard times and sufferings. He uses all of you to make me feel his abundant love that further strengthens my faith to carry on and have peace of mind. As I continue to strive with a smile, especially when I think of all those blessing I received, I am always praying to HIM for continuous blessings not only for me but for all of you out there with golden heart to the needy one.

THANK YOU is not enough to say but I'm sure that GOD will reward back all of your good deeds by thousand times.

Janeth Sulit

Janeth suffers from Cushing's syndrome which is a rare metabolic disorder caused by overproduction of corticosteroid hormones by the adrenal cortex. She also had a pheochromocytoma which is a rare malignant tumour of the adrenal gland that required an adrenalectomy of the left adrenal gland. The surgery notwithstanding, Janeth continues to suffer from Cushing's syndrome.

The Lighthouse Club Asia Pacific Region Benevolent Trust has agreed to support the costs of her medication for the next 12 months. Each monthly medication costs PHP25,000.00 and the Trust has paid for a number of treatments. Janeth is very grateful to the Lighthouse Club and The Lighthouse Club Asia Pacific Region Benevolent Trust for their support.



TKHS is the only global logistics service provider focused on providing tailor-made logistical solutions for the complex needs of luxury hospitality and gaming resort projects. The company was created purely to meet the complex needs of such projects and the demand from the industry for a reliable, scalable service provider with the ability to offer the best management expertise within the industry at a competitive price.

Here is a detailed breakdown of the individual elements of our service:

- PO management services and vendor follow-up
- International and domestic freight services
- Export and import customs clearance services
- Handling of cross-trade shipments of fabrics and components
- Local trucking and delivery arrangements
- Warehouse management services
- Onsite installation services
- Disposal and liquidation services.

We offer our range of services under the following phases of any development:

- Pre-opening
- Post-opening
- Refurbishments.



Please contact us by email if you have any questions about our company and services.

We will be pleased to assist you further.

E-mail: customer.service@tkhsgroup.com

www.tkhsgroup.com

Romil Lagrimas is a Lighthouse Club Scholar from Bulacan. He is now on his 5th year taking up Bachelor of Science in Civil Engineering at Bulacan State University.

"Thank you so much Lighthouse Club for supporting me in my studies. I have realized how lucky I am inspite of all the hardships I've been through. You gave me the clear vision of hope and success. You are the light that is guiding me to the path of success.

"in every struggle, every pain will always bear gains, with the help of God our hearts and souls as one. We can achieve the impossible one for the glory of God is manfully alive". -- sharing this unforgettable lines which is from our schools' song brings back memories.

Saying "THANK YOU VERY MUCH" is not enough to express how grateful I am for all the support that you have been extending to me and my family. I promise to do my best to reach my goals in life and in turn be also a blessing to others someday. Thank you very much from the bottom of my heart. God bless and more power.

*Romil Lagrimas,
BS in Electrical Engineering (Bulacan State University)*





The Macau Construction Market

Keith Buckley – Director Hsin Chong Engineering (Macau) Limited

Macau

Macau is one of the two Special Administrative Regions of the People's Republic of China, the other being Hong Kong. Macau lies on the western side of the Pearl River Delta across from Hong Kong (a one hour ferry ride) to the east, bordered by Guangdong Province to the north and facing the South China Sea to the east and south. With an estimated population of around 642,900 (Q2 2015 figure) living in an area of 30.3 km², it is the most densely populated region in the world.

The territory's economy is heavily dependent on gambling and tourism. However the Macau economy has been suffering an economic downturn for the past 15 months, due to an anti-corruption/money laundering drive by PRC authorities which has seen gaming revenues decline by 45% since the peak in 2014 and visitor arrivals have seen a 1.7% decrease in 2015. Macau continues to face the challenges of managing its growing casino industry, money-laundering, and the need to diversify the economy away from heavy dependence on gaming revenues.

Several very large integrated resort projects have been built since 2004 or are currently under construction. In Macau, integrated resorts are large complexes featuring casino, hotel accommodation and related facilities, extensive retail outlets, food and beverage outlets and non-gaming entertainment facilities.

At the end of 2014 Macau had a population of 636,200 and an unemployment rate of 1.7%, which has increased slightly to 1.9% in Q2 2015. In comparison Hong Kong had a population of 7.3 million and an unemployment rate of 3.3%. At Q2 2015 57,500 people were employed in the construction industry.

The information which follows gives a brief overview of Macau including a history of gambling, the construction market, project details and challenges, as well as some information related to doing business in Macau.

Author's Profile

Keith Buckley is a Director of Hsin Chong Engineering Macau Limited and, for the past 13 years, has been Executive Project Director for Hsin Chong's Construction Management projects with Venetian Macau Limited in Macau, all of which are related to the original Sands Macao and Venetian's developments on the Cotai Strip, in. A civil engineer by training, Keith has 45 years construction experience and has lived and worked on civil engineering and building construction projects in UK, Germany, Switzerland, Netherlands, Poland, Iraq, Egypt, Turkey, Malaysia, Hong Kong, Singapore, China and has also been involved in projects in the Philippines, Sri Lanka, Indonesia, Maldives, Thailand and Vietnam. For the past four years he has been the chairman of Lighthouse Club Macau, a construction charity, and is also Vice Chairman of the British Business Association of Macau.

History of Gambling in Macau

In an attempt to generate revenues for the government, gambling in Macau was legalized in 1847 with a new Macau gambling law introduced. In the late 19th century, the government introduced a licensing system (gambling legal system) for the “fantan” houses (Chinese gambling houses). It is reported that over 200 gambling houses were required to pay gambling rent to the government. The first casino monopoly concession was granted to the Tai Xing Company in 1937. The industry saw a major breakthrough in 1962 when the government granted the monopoly rights to all forms of gambling to STDM, a syndicate jointly formed by Hong Kong and Macau businessmen. STDM introduced western-style games and modernized the marine transport between Macau and Hong Kong, bringing millions of gamblers from Hong Kong every year. The license was extended in 1986 for another 15 years but expired at the end of 2001.

In 2002, the Macau government ended the monopoly system and 3 (later 6) casino operating concessions (and sub-concessions) are granted to SJM, (an 80% owned subsidiary of STDM), Wynn Resorts, Las Vegas Sands, Galaxy Entertainment Group, the partnership of MGM Mirage and Pansy Ho Chiu-king, and the partnership of Melco and PBL. At that time there were 16 casinos operated by the STDM, but in 2004, the opening of the Sands Macau ushered in the new era. Macau now has 36 casinos.

To put into perspective the importance of gaming to the Macau economy, refer to the comparisons with Las Vegas opposite :



Las Vegas

2006 Gaming Revenues of
US\$6.7 billion

2014 Gaming Revenues of
US\$6.4 billion

41.1 million
visitors in 2014

150,500
hotel/motel rooms in 2014

Average length of stay
3.5 days

Macau

2006 Gaming Revenues of
US\$7.2 billion

2014 Gaming revenue of
US\$45.2 billion

29.3 million
visitors in 2014

27,904
hotel rooms in 2014
Average length
of stay
1.1 days



Market overview

Macau is experiencing its 2nd construction boom in 13 years. The first boom was as a result of the cessation of the gaming monopoly in 2002 and the subsequent granting of gaming concessions and in particular to Las Vegas based developers and saw the first phase of the development of the Cotai Strip.

The main area of large scale construction in Macau is in Taipa/Cotai, which relates to the Cotai Strip.

In addition there are Government and social infrastructure projects currently in progress, including the Macau Light Railway Transit (LRT) system, a new Ferry Terminal to serve Hong Kong and the Pearl Delta, Education projects (University of Macau campus), infrastructure for the Hong Kong -Macau-Zhuhai Bridge, Public Housing projects as well as Environmental projects.

The peak of construction in Macau will happen throughout 2015 and 2016. The shortage of skilled labour and construction professionals is the most critical factor for construction projects in Macau.

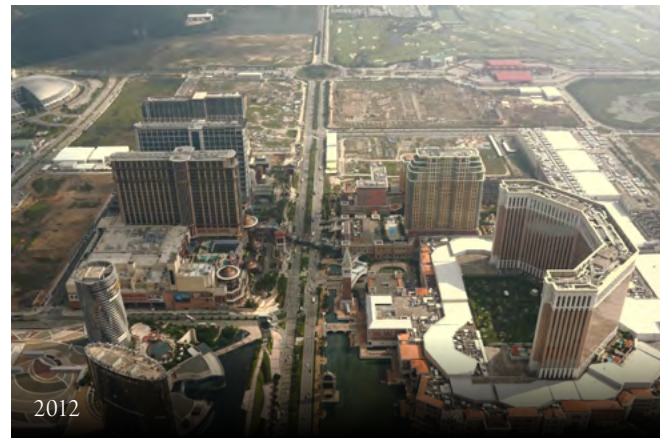
The Cotai strip

Thirteen years ago the Cotai Strip was a causeway between the islands of Coloane and Taipa (hence Cotai), with marshland on both sides of the causeway. Today it is home to five integrated resorts with six more under construction. Refer to the photos – then (2004) and more recently (2012).

The second boom started in 2012. Six major integrated gaming resorts are under construction in Cotai. This represents a build out of 11,500 hotel rooms in developments having a GFA of more than 32 million square feet!



2004



2012

Property	Rooms/suites	Opening
Galaxy Phase 2 and Broadway at Galaxy	1,570	05/2015 (opened)
Macau Studio City	1,600	10/2015
Wynn Palace	1,700	2016
The Parisian	3,000	2016
MGM Cotai	1,500	2016
Lisboa Palace	2,000	2017
St Regis Hotel (Sands Cotai Central)	400	2015
Louis XIII	200	2016
City of Dreams 5th Tower	780	2017
Total	12,750	

**Information obtained from internet sources.*

(Photos: Galaxy, Macau Studio City, The Parisian, MGM Cotai, Wynn Palace)



Hong Kong-Zhuhai-Macau Bridge

The Hong Kong–Zhuhai–Macau Bridge is an ongoing construction project which consists of a series of bridges and tunnels that will connect Hong Kong, Macau and Zhuhai, three major cities on the Pearl River Delta in China. The functions of the Bridge are to meet the demand of passenger and freight land transport among Hong Kong, the Mainland (particularly the region of Pearl River West) and Macao, to establish a new land transport link between the east and west banks of the Pearl River, and to enhance the economic and sustainable development of the three places.

The proposed 50 km link is expected to cost US\$10.6 billion (HK\$83 billion). With its length, it would become one of the landmarks within the area. The longest bridge section will be 29.6 km long and will include three cable-stayed spans between 280 and 460 m. Construction formally began on 15 December 2009. The bridge was due for completion in late 2016 but there is uncertainty regarding this date.

Macau LRT

The Macau Light Rapid Transit or Macau LRT is a mass transit system in Macau under construction. It will serve the Macau Peninsula, Taipa and Cotai, serving major border checkpoints such as the Border Gate, the Outer Harbour Ferry Terminal, the Lotus Bridge Border and the Macau International Airport.

The first LRT phase includes 21 stations – 11 in Taipa and Cotai and 10 in the peninsula. Construction in Taipa and Cotai is underway but construction in the peninsula has still to start and its route has still not been fixed but is expected to be confirmed in 2015.

Reports indicate that the first phase of the LRT project, originally scheduled to start operating in September 2017, has been delayed by nearly two and a half years.

Construction is being undertaken by Taiwanese and People's Republic of China contractors together with Macau contractors.

Hengqin Island

Hengqin Island of the People's Republic of China is adjacent to Taipa and Coloane of Macau with the Shisanmen Waterway in between, and is connected to Macau's Cotai via the Lotus Bridge. The island is the largest among the 146 islands of Zhuhai, being roughly three times the size of Macau. It has broad bays, sandy beaches, strangely shaped jagged rocks, beautiful scenery, fresh air, and natural vegetation cover.

Hengqin was formerly made up of two islands, which were recently connected as a result of land reclamation. The reclaimed island is 96 km² in area.

The University of Macau's new campus has just been built on Hengqin after the central government agreed, in effect, to give the island for Macau's use. And this is only a start.

In compliance with Hengqin development goals, a well-planned site development pattern will gradually unfold related to the following sectors: business services including, customs service, central business district and international residential zones; leisure tourism including resorts and ecological scenery zones; and scientific and educational R&D zones including education, cultural and creative, science and technological R&D and hi-tech industrial zones

Taipa Ferry terminal

The Taipa Pac On ferry terminal has been under design/construction for 10 over 10 years. After several delays and a huge budgetary slippage, latest reports are that the terminal should be open to the public by mid-2016.

When completed the New Ferry Terminal will provide a total of 16 berths for 400-seat passenger ships at the North Extension, three berths for 1,200-seat passenger ships at the West Extension, a helideck with 20,000 m² for 5 helicopters on the roof, as well as 44 passport counters and 24 auto-gates for each direction inside the building.





Galaxy Phase 2 in the left foreground with Broadway at Galaxy immediately behind it and Galaxy Phase 1 in the right foreground and behind it. In the far background, across the waterway is Hengqin Island in the People's Republic of China

Key issues for Macau Construction Projects

The key construction challenges in Macau are access to materials (e.g. concrete, steel), availability of plant and equipment, limited specialist contractors in the market and competition for engineering / project management staff.

However the biggest issue is the availability of skilled and unskilled labour. The Macau construction labour force is inadequate to service the construction market in boom times and importation of foreign workers, mostly from People's Republic of China and Hong Kong is required but is a highly political issue in Macau. Macau is therefore dependant on a government allocated imported labour quota system. There is evidence of wage increases, well in excess of inflation.

On the casino related development Contractors are mainly Macau or Hong Kong based with People's Republic of China contractors providing services related to facades and structural steelwork.

For infrastructure projects contractors are often from People's Republic of China.

Regulatory Framework

The regulatory environment for individual firms working in Macau, centres around Business Registration – Commercial and Tax, and licensing/ registration with the Public Works Department.

For projects, the main concerns are project approvals, construction licences and operational licensing.

Legal Framework

The legal framework in Macau is based on Civil law code based system. The official languages are Chinese and Portuguese (not English). All legislation (including technical codes) is in both languages. Correspondence with Government is usually in Portuguese.



Lighthouse Club committee members & special guests

The Contractors' Dinner & Safety Awards 2015

By Mark Divers

The Contractors' Dinner and Safety Awards 2015 was held on Friday 18th September 2015 at Maxim's, City Hall, Central, Hong Kong.

The Contractors' Dinner is a long standing event in the Hong Kong Lighthouse Club calendar aimed at getting contractors and subcontractors together socially, and in particular, the frontline staff who may not usually attend the more formal events of the club.





There was also an excellent level of very generous support from our sponsors, without whom the event simply wouldn't be what it is and the safety awards in particular wouldn't exist. Particular thanks to our...

Lead Sponsor

Construction Industry Council

Gold Sponsors

- Allied World Assurance Co. Ltd.
- Chun Wo Development Holdings Ltd.,
- Dragages Hong Kong Limited
- Gammon Construction Ltd.
- Hip Hing Construction Co. Ltd.
- Laing O'Rourke Construction (Asia) Ltd.
- Leighton Contractors (Asia) Ltd.
- VSC Steel Co., Ltd.

Silver Sponsors

- Bachy Soletanche Group Ltd.
- VSL-Intrafor

Safety Partner

Hilti Hong Kong

Supporting Organizations

- HK Occupational Safety and Health Association
- Institution of Occupational Safety & Health Hong Kong
- Society of Registered Safety Officers

Media Sponsor

PRC Magazine



Thanks also to our special guests from Hong Kong Government, Professional Associations and Trade Associations, and to everyone who helped to organize the event and judge the awards, all the participants and winners and to all those who made nominations.



Safe Foreman Award winners



Safety Awards

The intention at the Contractors' Dinner is to present awards that recognize individuals and companies that are really making a difference to site safety at the frontline on our construction sites and also to celebrate this in an informal atmosphere (where safety boots are welcome!). In the run-up to the dinner three teams were set-up to organize each set of the awards, with another team organizing the dinner, and also three teams of judges working. In total over 30 people were involved in organizing the event.



Safe Foreman Award

Presented annually to individual frontline supervisors who are making an outstanding contribution to Construction Site Safety.

Organized on behalf of the Lighthouse Club by the Society of Registered Safety Officers (SRSO), who have been supporting the awards for many years now.

The team of volunteers from the SRSO processed more than 400 applications for the awards, which were whittled down through a series of assessments and interviews to 5 finalists and 5 outstanding performers. The finalists needed to demonstrate a good knowledge of the health and safety issues they face and demonstrate their commitment to high standards and keeping themselves and their crews injury free.

The five finalists were then interviewed by a panel from the Lighthouse Club Main Committee to make the final decision.



Champion

Wong Kwun Kwan, Drillcut Ltd.
黃冠軍·鑽威工程

Runners-Up

Kan Kwok Fu, Gammon E&M Ltd.
簡國富·金門機電工程

Tang Wai Ming, CLP Engineering Ltd.
鄧偉明·中華電力

Chan Kam Cheong, Hsin Chong Construction Co. Ltd.
陳錦昌·新昌建築

Siu Ka Leung, Gammon Construction Ltd.
蕭嘉良·金門建築

Merit Award

Wong Ho Sing, Hip Hing Construction Ltd.
黃浩星·協興建築

Tse Chun Wai, Leighton Contractors (Asia) Ltd.
謝振威·禮頓建築

Chan Ho Ming, Chun Wo Construction and Engineering Ltd.
陳浩銘·俊和建築

Chow Kwok Piu, Bachy Soletanche Group Ltd.
周國標·法國地基建築

Cheung Yau Ming, Sanfield Building Contractors Ltd.
張友明·新輝建築



John Battersby, Deputy Chairman of Lighthouse Club and Mr. Cheung Hau Wai, JP, Chairman of the Site Safety Committee, Construction Industry Council.



Selfie on Safety to raise funds for the Charity



VSC 万顺昌

STEEL PROCESSING, DISTRIBUTION AND RECYCLING

www.vschk.com



1961

FOUNDED



1001

HKEX STOCK CODE



3.9

BILLION HKD IN REVENUE



Mark Divers, MC at the Dinner



Daron Leung, MC at the Dinner



Mr. Wu Wai Hung, Assistant Commissioner (Occupational Safety) of Labour Department





Safe Subcontractor Award

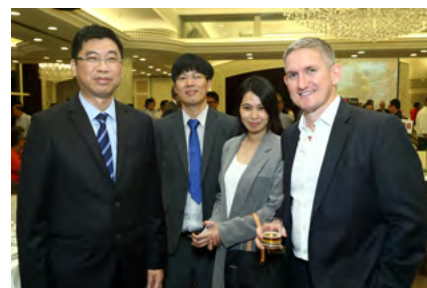
Presented annually from small to medium sized subcontractors who are setting an excellent example and going beyond expectations to work in a safe manner.

The Lighthouse Club safety committee was assisted by the HK Occupational Safety and Health Association to organize this years' award. A team was established to assess and visit the subcontractors who are nominated by their clients.

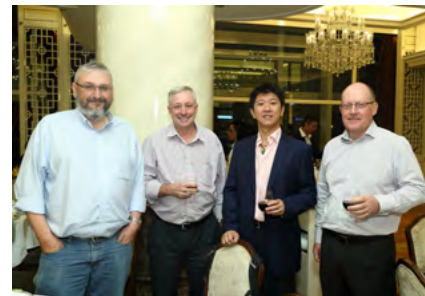
There are 3 rounds to the process ...

- i) a review of the applications
- ii) site visits by a team of Safety Professionals
- iii) final site visit by the judging panel

- Gold Award** Freyssinet Construction Asia Ltd.
- Silver Award** Victor Engineering Co Ltd. • 威泰士木工程有限公司
Chung Shun Construction Ltd. • 忠信建築有限公司
- Bronze Award** Entente Contractor Company Ltd. • 安洲營造有限公司
- Merit Award** Wai Tai Engineering (H.K.) Co. Ltd. • 偉泰工程(香港)有限公司



Safety Award Judging Team



Site Safety Practitioner Award

Presented annually to individual site safety practitioners who are making an outstanding contribution to Construction Site Safety.

To enter the awards individuals need to be nominated by an employer, colleague or associate. They are then shortlisted for interview and the finalists are selected for an on-site assessment at their place of work. 24 nominations were received, of whom 5 were selected as finalists.

Champion Li Kwok Tak, Gammon Construction Ltd.
李國德 • 金門建築

Distinction Chu Oi Man, Chun Wo Construction and Engineering Ltd.
朱愛雯 • 俊和建築

Runners-Up Hung Yi Ho, Leighton Contractors (Asia) Ltd.
洪爾豪 • 禮頓建築
Ko Ka Chun, Gammon Construction Ltd.
高家進 • 金門建築
Chan Ka Lun, Hip Hing Construction Ltd.
陳迦蒞 • 協興建築



Safety Partitioner Award winners

Safe Project Team Award

Presented annually to the project team (Client, Architect/Consultants, Contractor, Subcontractor, Frontline Personnel) who is setting the standard for health and safety in construction for Hong Kong. 49 entries were received for this year's award which was extremely encouraging and demonstrates the interest in the award. 10 projects were shortlisted for 1st round judging visits and 6 selected as finalists for 2nd round judging visits by the Lighthouse Club Safety Committee.

Gold Award:

- Liantang/Heung Yuen Wai Boundary Control Point, Site Formation and Infrastructure Works - Contract 2
蓮塘/香園圍口岸土地平整及基礎建設工程 - 工程合約 2

Silver Award:

- West Rail Tsuen Wan West Station TWS Cityside Property Development
西鐵荃灣西站五區域畔物業發展項目

Bronze Award:

- Hong Kong-Zhuhai-Macao Bridge, Hong Kong Boundary Crossing Facilities - Passenger Clearance Building
港珠澳大橋, 香港口岸, 旅檢大樓

Merit Award:

- Liantang/Heung Yuen Wai Boundary Control Point, Site Formation and Infrastructure Works - Contract 3
蓮塘/香園圍口岸土地平整及基礎建設工程 - 工程合約 3
- XRL 810A - West Kowloon Terminus Station North
廣深港高速鐵路香港段 - 西九龍總站 (北)
- Tuen Mun-Chek Lap Kok Link-Southern Connection Viaduct Section (HY/2012/07) 屯門至赤鱗角連接路 - 南面連接路高架道路段



Safe Project Team Award winner



The Event Organizing Team



Andy Lo, Chairman's Award winner

Chairman's Award

Awarded by the chairman of the Lighthouse Club Safety Committee to an individual, company or organisation that has made an outstanding contribution to health and safety in the Hong Kong Construction Industry.

Winner: Andy Lo, Vice President of Institution of Occupational Safety and Health (IOSH) for his ongoing support of health & safety in Hong Kong, the advice and mentoring he has, and continues to give, and the time he devotes to bringing about change with various associations and the Lighthouse Club.

After receiving the award Andy noted that he considered the award to be for all those supporting the Lighthouse Club Safety efforts and the SRSO, HKOSHA and IOSH-HK.

Awards Night

Another successful Contractors' Dinner with 468 attending. This dinner is really aimed at recognizing the efforts of the teams on site and the mix of frontline staff, subcontractors, contractors, consultants and clients was just right. The evening got going quicker than previous evenings with most people arriving early for pre-dinner drinks (evidence of an honest days work perhaps!). The downside of this being that it was more of a challenge than usual to get everyone sat down.... the threat of fines eventually got this resolved however. During dinner the three sets of awards were presented, a collection for the charitable funds held and the ever popular highlight of the evening 'no speeches'.

All-in-all a thoroughly enjoyable evening, producing several very happy and proud award winners, and quite a few suggestions to make the event even bigger and better next year. We think it's fair to say, again, that we ticked all the boxes as far as the Lighthouse Club objectives go.



Special Thanks

Thanks must go to the Society of Registered Safety Officers, Hong Kong Occupational Safety & Health Association and the Institute of Occupational Health & Safety, Hong Kong Branch for their ongoing expert support in organising and running the awards.

Also thanks to Hilti Hong Kong for their support in organising the event and for their ongoing support to the Lighthouse Club as a 'Safety Partner'.



Safety Selfie prize winner

Let's talk.

Not just an invitation, but the way we work best.

Plus 3 helps put your construction projects
back on track and back on budget, across Asia.
So give us a call and let's talk.



Find out more at www.plus3.com.my.
Plus 3 in Malaysia and in Hong Kong.

Malaysia

Plus Three Consultants (M) Sdn Bhd
Contact: Michael McIver
Suite B-3A-12, Block B, Plaza Mont' Kiara,
No. 2, Jalan Kiara, Mont' Kiara, 50480 Kuala Lumpur.
Tel : +6 03 6201 0996 E-mail : kl@plus3.com.my

Hong Kong

Plus Three Consultants (HK) Ltd
Contact: Stephen Tennant
Suite 901, Level 9, The Hong Kong Club Building,
3A Chater Road, Central, Hong Kong
Tel: +852 2851 2528 E-mail: hk@plus3.com.my



VSL-Intrafor congratulates all the safety award winners



Post-tensioning
Superstructure erection
Special construction methods
Stay cables
Heavy lifting
Climbform and formwork
Bridge and building dampers
Bearings and joints
Retained earth
Deep foundations
Soil improvement
Diaphragm walls
Grouting
Ground anchors
Vibrocompaction
Dewatering
Ground investigation
Product testing
Instrumentation and monitoring
Structural repair and preservation



www.vsl.com
20/F., Eight Commercial Tower
8 Sun Yip Street, Chai Wan, Hong Kong
Tel.: +(852)2590-2288 Fax.: +(852)2590-0290



And last but not least...

This event is mainly about promoting health and safety and fellowship and is not aimed at raising money for the Lighthouse Club charities, however as usual the generosity of everyone surprised us and we managed to raise an additional HK\$30,990 on the night through a collection for the Lighthouse Club charitable funds (this is in addition to any proceeds from the event after expenses).



Lead Sponsor



Gold Sponsors



Silver Sponsors



Supporting Organizations



SafetyPartner



YOUR INFRASTRUCTURE PROJECT
YOUR COMMERCIAL OBJECTIVES
YOUR RISKS MANAGED



With legal experience stretching across every stage of the construction lifecycle and across three continents, you can continue to entrust us with your most important and complex infrastructure projects.

Visit blplaw.com/hongkong

We practice in Hong Kong through Berwin Leighton Paisner (HK) LLP in association with Haley Tam & Co.



Deutsche Post DHL – The Mail & Logistics Group



THE BEST WAY TO DELIVER YOUR BUSINESS TO THE WORLD.



At DHL, we understand that our success comes from the success of our customers. With an extensive delivery network across 220 countries and territories, DHL is committed to helping businesses of any size grow internationally. Coupled with our 100,000 certified international specialists, we strive to deliver excellence in all our services, making us the best partner to help drive your business success around the world.

www.dhl.com/express



Smollett's Summer Party

Huge congratulations go to Barbara & Lee Smollett (Alfasi Constructions (Hong Kong) Ltd.) on their marriage earlier this year and their son Toby's 18th birthday. To celebrate they held the Smollett's Summer Party on the 18th July at the Grand Hyatt Hotel, Hong Kong with friends and family.

The Hong Kong Lighthouse Club Benevolent Fund would like to thank the Smollett's for their amazing generosity. They selected the Lighthouse Club as the beneficiary for their Laisee and raised an outstanding HK\$110,000 on the night.

Do you have an event or celebration where you can raise or donate money to the Lighthouse Club Hong Kong Benevolent Fund? If so, please contact Elaine Man.



An insightful and personal account of the path to success

by Yahamali Wijesinghe@Hilti

Ir. Dr. Derrick Pang, the Deputy Chairman and Executive Director of Chun Wo Development Holdings Ltd was the Speaker at the second "Keys to Success" Seminar organised by Lighthouse Club Women in Construction, on 26th September 2015.

Derrick started the evening by presenting personal character traits that he attributes to his success; such as being strong-minded, hardworking and straight forward. Then he showed how these same qualities can be seen from another person's perspective in a less than positive light. Highlighting the fact that each of us has our own personal truth, hence self-reflection and listening to others' criticism is important for successful leadership.

He then spoke about women in Contractors and how from an Employer's perspective what was truly important was competence, shared values and a balanced environment. However he acknowledged that factors such as stereotypes and difficulty to assimilate persisted; preventing more women from seeking a career working for a Contractor. He shared how his own company's target of 30% women in the work force has been difficult to achieve and welcomed the

participants to share their ideas on how to change the status quo.

He spoke about his own journey at Chun Wo. How his initial efforts to change the company culture in 2006 was met with resistance and led to mixed results. With the lessons learnt from this experience he tried again in 2009 and 2011, each time with more success. He elaborated on some of the success stories such as Chun Wo Elite Training Program and other employee reward schemes. He emphasized that mistakes are made when you want to bring about change. What was important was to reflect and learn from these mistakes and continue to strive.

He concluded the presentation by sharing some of his plans for the future. This was followed by a Q&A session with many of the participants asking him specifics on how an employer can increase female participation in the work force and how to better integrate women. Many of the participants shared their own experiences and opinions and a lively conversation continued over refreshments.





Our Construction practice

Deacons' award-winning construction practice provides a high-quality, integrated service, tailored to our clients' specific requirements. We frequently advise a range of market-leading international and domestic employers, contractors and consultants, as well as financial institutions and government organisations in prestigious projects across the region. With well-established offices in Beijing, Shanghai and Guangzhou, we have deep roots in the regional markets.

For further information, please visit www.deacons.com.hk or speak to our contacts listed.



Joseph Kwan

Head of Litigation & Dispute Resolution

Tel: +852 2825 9324

joseph.kwan@deacons.com.hk



Cheung Kwok Kit

Partner

Tel: +852 2825 9427

kwokkit.cheung@deacons.com.hk



Joseph Chung

Partner

Tel: +852 2825 9647

joseph.chung@deacons.com.hk

Young Members Group

July Happy Hour

Young Members Group hosted a joint Happy Hour with the Institution of Civil Engineers (ICE) to celebrate Lo Pan Festival on 24 July 2015. The event was held at the Crowne Plaza rooftop bar in Causeway Bay. A quiz also took place followed by thank you speeches from both organisations. The event was well received with an excellent turnout.



Technical Seminar on Tunnel Grouting

Unfortunately the July technical seminar on 9 July 2015, which was due to be held at The University of Hong Kong, was cancelled due to Typhoon 8 signal (Typhoon Linfa) being hoisted. This was unfortunate as over 60 people had signed up for the seminar. Thank you to Merman Technology, Holcim France and TPH Bausysteme GmbH Germany for their support. We hope to reschedule the seminar in the future.



Macau 10 years old

The Lighthouse Club Macau will be ten years old in October 2015 and preparations are in hand for a celebratory Golf Day and dinner on 16 October. The response from golf teams and sponsors has been very good.

During its ten years of existence the Lighthouse Club Macau has provided financial assistance on around 40 occasions, in the form of donations to the family, where a construction worker has sustained a fatal injury in a construction related accident. In addition, financial assistance, in the form of tuition fees have, in some cases, been paid to allow a student to continue education where the father has died as a result of a construction accident.

The Lighthouse Club Macau now has more than 230 members, including 23 corporate members and 118 individual members and our membership continues to grow.

We have continued our monthly social function which continues to be generously sponsored and also provide a platform for fund raising.

A function was held in May at Sands Cotai Central, Sheraton hotel pool deck, sponsored by T Marble Design Gallery Limited. The highlight of the evening was a walk about performance by an artist playing classical pop on the electric violin.

Functions were also held in June (sponsored by Altitech Macau Ltd), July (sponsored by Hilti (Hong Kong) Limited), August (sponsored by Sun Ming Sang) and in September (sponsored by Hsin Chong Engineering (Macau) Ltd).



We're here to help when things don't go as planned.

Contract Dispute Consultants has built an impressive track record in resolving complex construction disputes.

Call us on **852 3180 9531** to see how we can help you.

15th Floor, 100 Queen's Road Central, Hong Kong
 † (852) 3180 9531 † (852) 3180 9399 † info@contractdispute.com.hk



www.contractdispute.com.hk

Kuala Lumpur Updates

As at 31 August 2015

the Lighthouse Club KL has 81 members and 5 corporate members.

On 4 June 2015

LHC KL had our Monthly Get Together in "El Sid's". The evening was sponsored by AGS Four Winds.

On 2 July 2015

LHCKL had our Monthly Get Together in "El Sid's", which was sponsored by RB International.

On 6 August 2015

LHC KL's Monthly Get Together was held in "Never Mine it is yours" in Changkat Bukit Bintang.

On Thursday 3 September 2015

our last Monthly Get Together was organized in "El Sid's" and sponsored by IPEC Systems.

Agenda Lighthouse Club KL:

Thursday 1 October 2015 6.30 pm

Monthly Get Together at El Sid's sponsored by Tony Gee and Partners

Saturday 24 October 2015

Plus Three Claret Jug – Annual Golf Challenge

Thursday 5 November 2015 6.30 pm

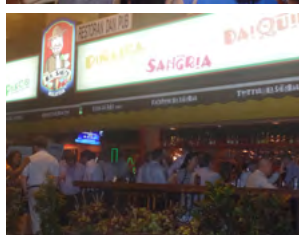
Monthly Get Together sponsored by Megalift

Saturday 14 November 2015

Annual Dinner at KLRCA

Thursday 3 December 2015

Monthly Get Together



Lighthouse Club Kuala Lumpur Committee Members:

Roderick Noble – *President*

Stephen Healey – *Vice-President*

Lim Ling Ling – *Treasurer*

Bert de Munck – *Secretary*

Clarise Low – *Assistant Secretary*

Evan Ho, HT Ong, Anthony Edwards, Ravendran Rasalingam –
Ordinary Committee members

For more details on LHC KL events contact Bert de Munck by email:
lighthouseclubkl@gmail.com
www.facebook.com/LighthouseClubKL

**Lighthouse Club
Kuala Lumpur
Annual Dinner 2015**

Folks it's the time of the year to Suit Up
and put on your dancing shoes !

Date : 14 November 2015
Venue : Kuala Lumpur Regional Centre for Arbitration

Kuala Lumpur Bursaries

On Friday 4 September 2015, the Master Builders Association Malaysia (MBAM) organized an appreciation night. This event was also the occasion to hand out the bursaries for upcoming year. Every year the Lighthouse Club Kuala Lumpur sponsors one student with a bursary.

A total of three students were invited to receive the appreciation. Two students studying at University of Malaya Lee Zhi Zheng and Chin Sin Woei and study respectively Bachelor of Quantity Surveying (starting year 2013) and Bachelor of Civil Engineering (starting year 2014).

The newest student that will start this year is Ms Yap Li Jun who is going to study for a Bachelor of Quantity Surveying at Universiti Tunku Abdul Rahman. During the appreciation night MBAM and Lighthouse Club KL handed out the bursaries to the students for 2015



First year students, Matthew Tee – president MBAM, Tan Sri Datuk Tee Hock Seng (Honorary Guest), Mr Chua Siow Leng and Lighthouse Club Kuala Lumpur after handing out all bursaries.

MBAM Health and Safety Awards 2015

The article on the MBAM Health and Safety Awards 2015 was incomplete since the logos of the sponsors were not published. Lighthouse Club Kuala Lumpur regret this error and want to take this opportunity once more to thank the sponsors of the MBAM Health and Safety awards, jointly organized by the Lighthouse Club Kuala Lumpur.

The sponsorship and support by Vinci Construction Grand Projects, Freyssinet PSC (M) Sdn Bhd, Al-Ambia Bhd and 39 Essex Chambers not only gave us the opportunity to successfully organise the 2015 Health and Safety Awards but also provides a basis of support for 2016's MBAM Health and Safety Awards.



GRANDS PROJETS



Viewing your project from a different perspective...

Aspect Asia has a wealth of experience in providing specialist skills in the commercial management of projects and in the resolution of a wide range of construction disputes.



- ▲ Commercial and contractual advice
- ▲ Preparation, defence and management of claims for time and costs



- ▲ Expert Witness services
- ▲ Dispute Management



- ▲ Forensic Planning and Delay Analysis
- ▲ Commercial and Project Management
- ▲ Quantity Surveying



Contact : Nick Adams

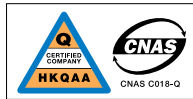
Aspect Consulting Asia Ltd

Units A & B, 10/F, Neich Tower, 128 Gloucester Road, Wan Chai, Hong Kong
Tel: +852 2827 6068 Fax: +852 2827 6168 E-mail: info@aspectasia.com.hk
Website: www.aspectasia.com.hk



BACHY SOLETANCHE 法國地基建築公司

305-8 3/F Harcourt House 39 Gloucester Road Wanchai Hong Kong
e-mail bsg@soletanche-bachy.com · www.bachy-soletanche.com.hk



ISO 9001 : 2008
Certificate No.: CC 295



ISO 14001 : 2004
Certificate No.: CC2726



OHSAS 18001 : 2007
Certificate No.: CC2682



Safety Award Ceremony 2015 was held by West Kowloon Cultural District Authority on 17th August 2015 to appreciate contractors with outstanding health and safety performance during the 1st half year period of year 2015.

Bachy Soletanche Group Limited scored 4 out of the 11 awards granted for this period, which is the greatest number of awards received in the ceremony.



The awards were presented by Mr Duncan Pescod (CEO of WKCD), Mr Jeremy Stowe (Project Director of WKCD) and Mr M W Chan (Executive Director of WKCD) to Mr Julien Landrot (MD of BSG), Mr Ringo Lau (Director of BSG) and our senior staff Mr K W Wong & Mr K P Chow.

On top of our ISO 9000 and 14000 awards, we are honoured to receive the ISO 50001 Environmental Certificate, which further demonstrates our determination to ensure the well being of our workers, as well as our capability in promoting environmental awareness in our construction projects.



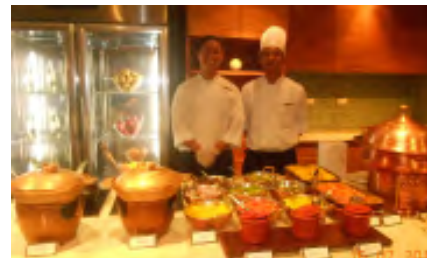
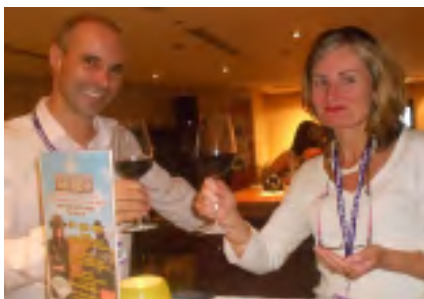
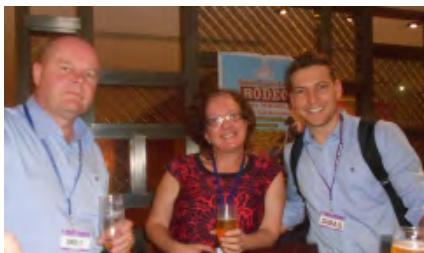
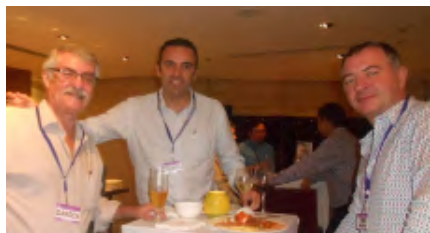
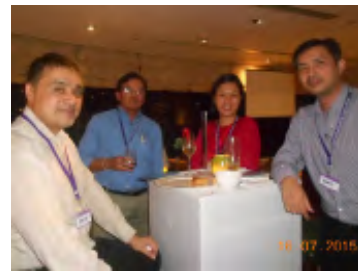
Safety and Corporate Social Responsibility are always high on BSG's priority when it comes to social awareness, while our excellent track records on site safety and our list of safety awards do exemplify these.

BSGL, a leading specialist ground engineering contractor, has strived in Hong Kong by participating in many landmark projects for over 40 years, and will continue to combine unrivalled local experience with our international capability in foundation engineering technology.

Manila 16 July Event

Marriot Manila

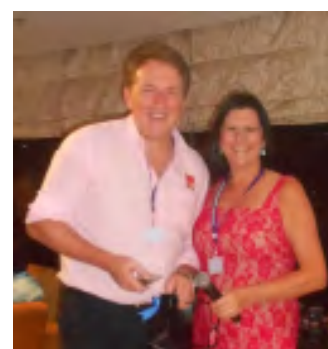
Traffic meant a quieter than usual evening, but the 19 members, 13 guests and 2 sponsors enjoyed good company and a delicious Indian Buffet provided by Marriot Hotel. The club welcomes new silver member Alsina Formwork Southeast Asia Corporation.



With 25 years of providing services in the Philippines, and offices in Manila, Cebu and Davao, RLBP has provided services to a prestigious portfolio of projects and clients.

Rider Levett Bucknall Philippines Inc. is committed to creating and nurturing lasting relationships with clients, cognizant of the organisations' core values, and bringing them to each and every project.

See www.rlb.com or contact Corazon Ballard at coraballard@ph.rlb.com



Event Sponsor

Rider Levett Bucknall Philippines

RLBP is part of Rider Levett Bucknall, an independent global property and construction practice with 120 offices in 80 countries.

RLBP is the biggest Quantity Surveying consultancy practice in the Philippines. Offering professional services in Quantity Surveying, Project and Construction Management, Construction Cost Consulting and Project and Claims Management.



Charity - Moneys raised from the event were PHP5,250.00 from sponsorship and the raffle.

June 18 Quiz Night & Mexican Dinner

Marriot Manila

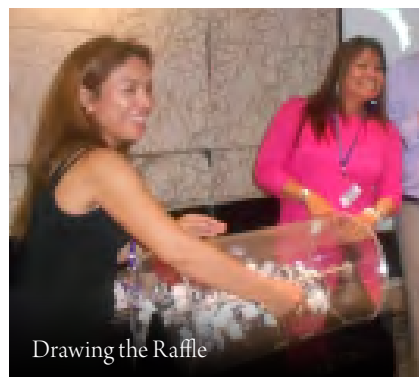
Back due to popular demand was the second fabulous and fun quiz night, attended by 54 enthusiastic members, guests and sponsors. 9 teams battled furiously to prove their mental supremacy. Leighton fielded the winning team. Charity moneys raised from the door, auction, and raffle was P38,335. Funds raised go towards supporting Lighthouse Club Manila scholars and charity projects. Welcome to new bronze members David Hill and Madhava Gudivada.



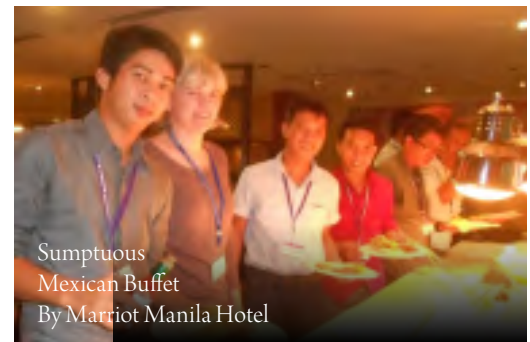
Winning Team from Leighton showing off their prizes



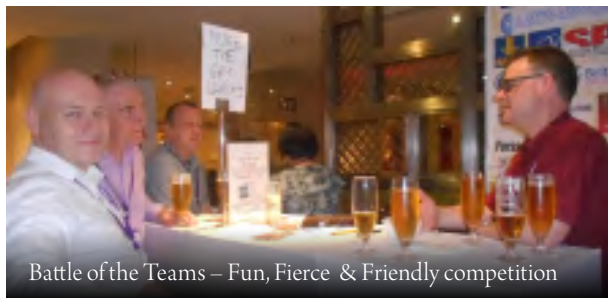
Welcoming Committee
Amanda Parker and LHCM
Administrator Me-Anne.



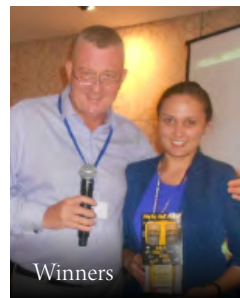
Drawing the Raffle



Sumptuous
Mexican Buffet
By Marriot Manila Hotel



Battle of the Teams – Fun, Fierce & Friendly competition



Winners



Event Sponsor HMRAUCTION

HMR Auctions provides comprehensive auction, valuation, and logistics services. As the Philippines' largest full-service auction and valuation company, HMR specialises in maximising the return for redundant assets, from end of project construction surplus through to heavy equipment sales. For information see:-

<http://hmrauctions.com.ph/> or contact Samuel Powell at samuel.powell@hmrphils.com.



CEO Sam Powell



HMR Auction Auctioneer in Action

Singapore News

It's that time of year again and the Lighthouse Club (Singapore) has had its annual golf tournament on Friday 14th August at Jurong Country Club.

The event was a huge success! Managing to hit the maximum tournament capacity of 144 golfers, 36 flights.

The whole event raised an amazing SGD \$20k for the club!

The event started at 11:30am at reception. Once everyone registered and collected the golf goodie bags, they headed to the Golfer's Terrace for a light buffet lunch.



Tee-off started with a gun shot at 1pm. The golf format was Texas Scramble which meant each player hits a tee shot on. The best ball, as determined by the team, is selected for the second shot. Each player was told to take 4 tee shots each. This required a combination of strategy, camaraderie, skill, and heartbreak! All played with fun, especially with the free flow beer cans and Stella girls distributing them.



The golf finally finished around 7pm, the golfers refreshed they headed to the Ficus Ballroom for the evening dinner. The President of the Lighthouse Club (Singapore) John Davies made his welcome

and thank you speech to our sponsors. This was followed by our prize presentation to the winning teams:

- 1st Prize team Loh & Loh Construction Pte Ltd (David Chua, K K Chew, Terry Yee, Thomas Toh)
- 2nd Prize team QMT Industrial and Safety (Ronnie Tan, Mohd Yussof, Bernard Teo, Mike Neo)
- 3rd Prize team Kingsforce Management Services (Eric Yeo, Eric Cheong, Paul Si, Keith Toh)



Our novelty prizes went to:

- Nearest to Pin David Chu
- Longest Drive David Bourke

As yet no one has claimed the Harley Davison Prize on Hole 14, however we did have a HOLE-IN-ONE on beat the pro hole 17 by Tan Hock Lai who played for team JVL Engineering Pte Ltd.



As dinner, beer and wine kept flowing. There was a silent auction services kindly provided by Helping Hand Group, a lucky draw and also a live auction.

The live auction prize, kindly sponsored by Isabella Duncan was a Paula Creamer Signed HSBC Cap which was sold at SGD \$325.

Having such a fantastic day, the golf dinner ended just after 9:30pm.



A big THANK YOU goes out to our sponsors and volunteers for the event. Without you we would have never had such a successful day!

Our Sponsors...

GOLD sponsor FTI Consulting, kindly provided us with our lovely T-Shirts, which made us all look as good as Tiger Woods and Rory McIlroy (Not sure about the golf playing part)! SILVER sponsor Navigant, kindly sponsored our golf caps, which kept us cool and shady in the 30C heat.

BRONZE sponsors were Hays (Construction) sponsors of the golf tournament for the 5th consecutive year and who provided us with our white golf tees.



BK Asia Pacific sponsoring the golf balls, I'm guessing most of them are lost in the water at hole 14.

Randstad who sponsored our beer can holders, which kept our beer cool.

HOLE-IN-ONE sponsoring the Harley Davison Motorbike, Rutherford Global Power, who have been sponsoring the prize for the 3rd year.



BEER sponsor were kindly sponsored for the 2nd year by Pacifica Beverages and our WINE sponsor for the 2nd year by Profiters.

Many thanks to our Lighthouse Club (Singapore) committee organisers Karen, Raha, John and Graham and Matthew Murray at Champions Golf.



In addition to the social mischief, the Singapore branch continues to be a contributor to the work of Transient Workers Count Too, or TWC2. They assisted 2,444 migrant workers in 2014. The majority of these people came through the meal project, The Cuff Road Project, open to South Asian men who are not permitted to work while awaiting resolution to their injury compensation claim or salary dispute.

Most of these men present with workplace injuries, and some sustain injuries or illness in the long months required to conclude the treatment and compensation claim. When the employer refuses to provide payment for what TWC2 view as necessary medical treatment, TWC2 will step in to assist.

These are several examples of the assistance we've provided, thanks to our generous donors:

Afzal was attacked by an unknown assailant with a beer bottle and suffered broken bones in his face. His employer refused to pay for treatment, arguing that this was not a workplace injury, even though the doctor said treatment was urgent and necessary.

Amin was dying of lung cancer in TTSH. Doctors informed us that a medical evacuation plane would be returning to Bangladesh empty and would transport Amin at half the usual price. He was able to spend his last hours with his wife and children in Bangladesh before he passed away.

Mazibar had a section of his skull removed to allow for decompression of the brain after his fall. Since the employer had paid in excess of the \$30,000 required for workplace injuries, he was unwilling to pay an additional amount for the cranioplasty to cover and protect the brain. TWC2 was able to pay for this to be done.

While most of the medical expenses are for simpler procedures like extraction of infected teeth, treatment for skin problems or flu, TWC2 do occasionally have these larger medical issues that cannot be left untreated.

We're presently working to schedule a procedure for Mia Mohammad Sumon to have the hole in his heart closed (PDA closure). He came to our attention after his workplace injury complaining of swollen and infected feet, a result of the congenital heart defect. His employer is not responsible for such pre-existing problems and his family is utterly incapable of paying for such a procedure in Bangladesh. They rely on him, the eldest and only son, for their survival.

The estimated cost is \$22,000. The procedure will take place as soon as possible after the doctor from NUH returns to Singapore, possibly in late September 2015.

We are very appreciative of the financial assistance that enables us to manage these extreme and sometimes life-threatening situations for the transient workers. For these men, even the small amounts that enable them to see a doctor for their more commonplace medical problems are enormously important and reassuring.



In addition to these activities there has been the usual selection of monthly gatherings at a variety of venues, with the September event being sponsored by Pinsent Masons and hosted at Hotel Jen on Orchard Road.

September also saw the now World Famous F1 night race return to the streets of Singapore and the Singapore branch host an F1 event to coincide with the race.

Preparation is underway for the annual dinner and dance, as usual to be held at the Tanglin Club on Saturday 21st of November.



Western Australia Winter Ball – In Review

On a chilly winter night in August, Perth hosted Australia's inaugural Black Tie Winter Ball Event. On 21st August 2015 the packed ballroom at the Parmelia Hilton was buzzing with anticipation: a grand total of 141 people had gathered together to celebrate being a small part of the Lighthouse Club.

Guests were mainly drawn from our local Lighthouse Club Western Australia members. Accompanying them were partners and guests dragged in under various states of willingness and with varying degrees of resistance. We were also lucky enough to have a healthy number of visitors from the other side of the country (a mere 4,300km to Brisbane) and from overseas (including diplomats from the Singapore, Hong Kong, Manila, Malaysia and Macau branches). Regardless of the distance travelled to join us on the night, we are extremely grateful to everyone for their support.

Local businesses kindly chipped in with prizes for the exciting raffle. Top of the bill were Kailis Pearls who donated a wonderful headline piece. Also showing their support were: Clyde & Co, CSI, and our very own Stephen Bolt. Thanks equally to those that donated and those that tried to win.

The night's MC was Lighthouse Club supporter Chris Watson. Chris ensured the evening went off without a hitch (or covered up where a hitch was found) – if the evening appeared to go entirely smoothly to the guests then it was all thanks to this master of illusions.

Joining Chris on stage at various points during the evening was a veritable gaggle of local musicians: jazz pianist Vaughn Beaver; DJ Alcatraz and band Silent Deeds. All proved themselves to be masters of their chosen art and we thank them for contributing to the success of the evening.

And what a success it was! By any performance metric you care to use, things went well. The highlight of the evening was undoubtedly being able to present a cheque for \$5000 Australian dollars to a

representative to our chosen charity, Clontarf Aboriginal College. The College will purchase much-needed personal protective equipment for those students that require it to attend their work placements. The College will also be able to send some students on essential courses to gain their Construction White Card – an essential document for anyone wanting to enter a work site in Australia.

Thanks to our generous (and possibly inebriated) guests we were able to raise over \$7,800 from the event. A healthy boost to the Australian war chest! All in all a great evening and we thank everyone who contributed.



THE LIGHTHOUSE KUALA LUMPUR

Plus 3 "Claret Jug"

2015 Annual Golf Day



+3 PLUS 3
CONSULTANTS

Saturday 24 October 2015

Venue:

Templar Park Golf Club

EXPERTS AND PROFESSIONALS

FOR *INTERNATIONAL* PROJECT DELIVERY

- | | |
|---------------------|------------------------------|
| ■ 3605 AIA Tower, | ■ 16 Raffles Quay |
| ■ 183 Electric Road | ■ #33-03 Hong Leong Building |
| ■ Hong Kong | ■ Singapore 048581 |
| ■ t: +852 2572 6533 | ■ t: +65 6818 6390 |
| ■ f: +852 2572 7966 | ■ f: +65 6818 6391 |

www.aimgrp.com



Lighthouse Club - Asia Pacific Region Sponsors



Aedas

ADR | Partnership
Partners in Alternative Dispute Resolution



AON
Empower Results®



BK Asia Pacific



CLYDE & CO
其禮律師行



DEACONS
的近律師行



FRAGOMEN



GOLIK
高力集團





howden

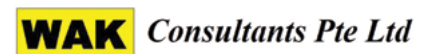


KING & WOOD
MALLESONS
金杜律师事务所



MAYER · BROWN
JSM

MinterEllison



Forthcoming Events

of Winter 2015

Thursday 5

Kuala Lumpur Monthly Get Together
Venue TBA

Friday 6

Hong Kong Monthly Get Together and
Extraordinary General Meeting
Insiders, 17 Fenwick Street, Wanchai

Saturday 7

Asia Pacific Region Committee Meeting
Manila

Manila Annual Charity Rodeo
Grand Ballroom, Marriot Hotel

Wednesday 11

Bangkok Networking Event
The Club House Sports Bar and Grill, Sukhumvit soi 23

Macau Monthly Social Gathering
R-Bar, G/F Hard Rock Hotel, City of Dream, Taipa

Thursday 12

Ho Chi Minh City Networking Drinks
Orient Bar, 24 Ngo Van Nam, Ho Chi Minh City

Melbourne Monthly Get Together
Belgium Beer Cafe, 5 Riverside Quay, Southbank

Singapore Get Together
Fern & Kiwi, 3C River Valley Road

Saturday 14

Bangkok Monthly Saturday Golf
Chuan Chuen Golf Course, 8.30am

Kuala Lumpur Annual Dinner
Kuala Lumpur Regional Centre for Arbitration
Bangunan Sulaiman, Jalan Sultan Hishamuddin

Thursday 19

Brisbane Monthly Get Together
The Pav Bar & Courtyard, 39 Edward Street

Saturday 21

Singapore Annual Dinner and Dance
Tanglin Club at 5 Steven Road

Thursday 26

Sydney Monthly Get Together
The Rooftop Terrace, Metropolitan Hotel, No. 1 Bridge
Street

Friday 27

Bangkok Monthly last Friday lunch
Venue tbc

November

Thursday 3

Kuala Lumpur Monthly Get Together
El Sid's Bar, 1 Jalan Setiapuspa

Friday 4

Hong Kong Christmas Get Together
Insiders, 17 Fenwick Street, Wanchai

Wednesday 9

Macau Monthly Social Gathering
R-Bar, Hard Rock Hotel, City of Dream, Taipa

Thursday 10

Ho Chi Minh City Networking Drinks
Orient Bar, 24 Ngo Van Nam, Ho Chi Minh City

Hong Kong Annual Golf Day
Kau Sai Chau (South Course)

Manila Christmas Party
Venue TBA

Melbourne Monthly Get Together
Belgium Beer Cafe, 5 Riverside Quay, Southbank

Singapore Monthly Get Together
Penny Black, 26/27 Boat Quay

Friday 11

Ho Chi Minh City Golf Day
Vietnam Golf & Country Club, Thu Duc

Saturday 12

Bangkok Monthly Saturday Golf
Chuan Chuen Golf Course, 8.30am

Thursday 17

Brisbane Monthly Get Together
The Pav Bar & Courtyard, 39 Edward Street

Thursday 31

Sydney Monthly Get Together
The Rooftop Terrace, Metropolitan Hotel,
No. 1 Bridge Street

December



OVER **25** Years of
1988 - 2015 Managing
Construction
Risk in **ASIA**

Stonecutters Bridge, Hong Kong

Minimise risk, maximise results.

Given the current world economy and increased competition for business, countries are investing in their infrastructure to gain a competitive edge. In Asia alone, US\$8 trillion in infrastructure investment is needed over the next decade, according to the Asian Development Bank.

Many clients approach Hill to provide support in understanding and implementing the contract requirement and administrative framework both during tender preparation and post contract execution. Given their increasing complexity, large infrastructure projects require experienced and focused management to ensure that they are completed in a timely and cost-effective manner. They require particular expertise in forensically analysing delay and quantum issues arising during the currency of the project and finding appropriate solutions to those issues.

Having participated in over 10,000 project assignments with a total construction value of over US\$500 billion, Hill has managed all phases of the construction process, from concept through to completion; our world renowned Construction Claims & Consulting Group has participated in over 50,000 disputes valued in excess of US\$100 billion. Clients rely upon our experience and expertise and call upon Hill to ensure project delivery and to support them as dispute resolution specialists.

Turn to Hill International. With over 4,800 professionals in 100 office locations throughout the world, Hill provides a broad range of expert consulting services including: • Risk Analysis & Management • Contract Management Strategy • Contract Commercial Advice • CPM Planning & Scheduling • Schedule Delay Analysis • Claims Management / Avoidance Procedures • Claims Strategist • Diagnosis & Technology • Staff Augmentation • Expert Witness • Arbitration & Litigation Support • Case Managers • Adjudication / Mediation • Dispute Avoidance, Management & Resolution • Training.

Continually operating in Hong Kong since 1988.

For more information on our services, visit www.hillintl.com.

Offices in Asia: Hong Kong | Beijing | Shanghai | Singapore | Danang City | Gurgaon | Kabul | Kuala Lumpur | Manila |



Hill International

The Global Leader in Managing Construction Risk

Quality advice and deliverables that will make a real difference.



Expert Witness

Expert opinion on complex quantum and delay issues.



Claims Support

Preparation and defence of contractual claims for extensions of time and additional payment.



Contract Advice

Independent opinions and contract reviews for risk and opportunity.



Dispute Resolution

Expert support in mediation, adjudication, arbitration, litigation and alternative dispute resolution.

If you wish to discuss your project requirements, please contact James Longbottom, Patrick O'Neill or David Longbottom on (852) 2234 5228.

ADR Partnership Limited
17A Seabright Plaza, 9-23 Shell Street, North Point, Hong Kong
t: (852) 2234 5228 f: (852) 2234 6228 e: info@adrpartnership.com

ADR | Partnership

Partners in Alternative Dispute Resolution

www.adrpartnership.com

holman fenwick willan **hfw**

HFW'S GLOBAL CONSTRUCTION TEAM IS HERE TO HELP



Holman Fenwick Willan is a global law firm assisting businesses in the construction sector. Our lawyers advise on a range of projects, including energy, transportation, major infrastructure and commercial developments.

For more information about how we can help your business, please contact:

Nick Longley

Hong Kong/Melbourne
T: +852 3983 7680/
+61 (0)3 8601 4585
E: nick.longley@hfw.com

Vincent Liu

Hong Kong
T: +852 3983 7682
E: vincent.liu@hfw.com

Colin Dodd

Hong Kong
T: +852 3983 7681
E: colin.dodd@hfw.com

Amanda Davidson

Sydney/Singapore
T: +61 (0)2 9320 4601/
+65 6411 5300
E: amanda.davidson@hfw.com

Matthew Blycha

Perth
T: +61 (0)8 9422 4703
E: matthew.blycha@hfw.com

Lawyers for international commerce

hfw.com

São Paulo London Paris Brussels Geneva Piraeus Dubai Hong Kong Shanghai Singapore Melbourne Sydney Perth

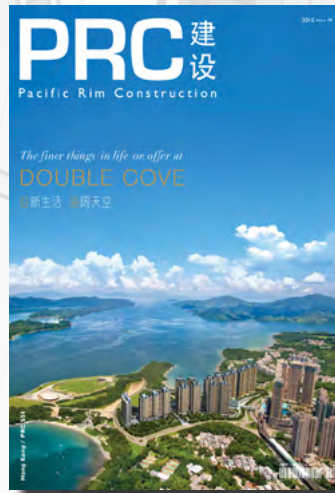
100% committed to serving the local building industry

EDITING



ROF Media is the only Hong Kong based Media Group focused solely on building and construction. Our services include the development of individual tailor-made solutions through to the design and production of entire publications. All to aid dynamic communication.

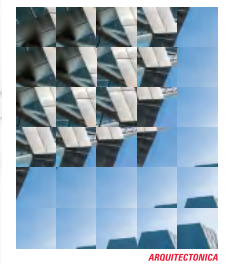
ONLINE



DESIGN



PRINTING



PHOTOGRAPHY



STAY IN TOUCH
Subscribe to
ROF MEDIA
E-Newsletter

ROF Media

+852 3150 8988
info@rofmedia.com
www.rofmedia.com

Safer, Faster, More Efficient, Lower Total Cost

TVSC Construction Steel Solutions Limited is the result of a collaboration between 2 leading players of the construction steel industry – Van Shung Chong Holdings Limited and NatSteel Holdings Pte.Ltd. of Singapore (a Tata Steel Enterprise). Both, since 1961, have been key players in the development of the construction industry in their respective markets.

By working together with contractors, fixers and other stakeholders, TVSC is leading the conversion of the Hong Kong construction steel supply chain from labour intensive and on-site to automated and off-site processing. TVSC is working closely with customers to create solutions that are customized to the project blueprint, redefining concepts of time, inventory and manpower management as well as material wastage reduction.



www.tvschk.com
sales@tvschk.com