

the Lighthouse

Events | Benevolence | Industry News

Summer 2018

Hong Kong's History of

MANAGING TREES

明建會

Lighthouse Club International

Australia | Cambodia | China | Hong Kong | Macau | Malaysia | Myanmar |
Philippines | Singapore | Thailand | United Kingdom & Ireland | Vietnam



Aliis Cum Humanitate

CRANE SAFETY INSPECTIONS

Alatas offers **Critical Parts Inspections (CPI)** by Crane Inspectors who are trained according to ISO 23814. These 3rd party inspections will be carried out according to tailor made checklists and service plans.

The methods applied for CPI are limited to non-invasive inspections.

These include:

- ▶ Collect information from the operator
- ▶ Steel structures visual inspection for cracks, deformation and repairs
- ▶ Lubricant levels, lubrication
- ▶ Wire rope inspection according to ISO 4309, sheaves inspection
- ▶ Hydraulic components visual inspection without pressure tests
- ▶ Function tests of drives and limit switches
- ▶ Function tests for smooth operation, check for unusual noises



ALATAS
CRANE SERVICES WORLDWIDE

ALATAS HONG KONG LTD
2203 Winning Centre, 28 Tai Yau Street
San Po Kong, Kowloon, Hong Kong
Tel: +852 2153 2153
Email: hongkong@alatas.com.hk
www.alatas.com

Crane Status
Kobelco crane

Customer Name : HMK
Crane Type : Kobelco MK320
Crane S/N : EP00187

Engineer: Danny, Billie
Job ref: 06_1718-088
Start Of Service : 16.11.2017
End Of Service : 16.11.2017

Pos	Work Done / Open Items	Done/ Open
1	Initial inspect the crane structure, found size of nut were	Open
2	to its heavy nut, recommend to remove ALATP	Open
3	hammer check on several condition	Done
4	main hook and drum hook are in good condition	Done
5	swinging function tested working in order	Done
6	lifting function tested working in order	Done
7	emergency function tested working in order	Done
8	swinging wire rope checked working in order (diameter 10.5mm)	Done
9	Emergency stop tested function working	Done
10	Emergency stop tested function working	Done
11	main drive function does not checked	Open
12	air filter checked daily	Open



ALATAS

Alatas Hong Kong Ltd
2203, Winning Centre,
29 Tai Yau Street
San Po Kong, Hong Kong

Hydraulic Workshop
G/F 5 Luk Hop Street,
San Po Kong
Kowloon, Hong Kong

Email: hongkong@alatas.com.hk
Telephone: +852 2153 2153
Fax: +852 2153 2163
www.alatas.com





Exclusive Insurance Facility for HKCA members

The Insurance Facility offers a sustainable, economical, and comprehensive solution exclusively to HKCA members and their subsidiary companies for procuring Contractors' All Risk (CAR), Employee's Compensation (EC) Insurance Blanket Policies and Bond Facility, and enjoying some key benefits of this insurance programme.

- Cost saving
- Time saving
- Transparency & Stability
- Claims efficiency
- Documentation adequacy

Contact us

Iris Chan
+852 2195 5608
iris.chan@willistowerswatson.com

willistowerswatson.com

Willis Towers Watson 

Chairman's Message

As Spring rolls on to Summer and dry seasons become rainy seasons (sorry, Britain, couldn't resist.), Lighthouse Club International continues to thrive. The Bangkok branch, after years of self-supporting their chosen benevolence activity, have reached out to the Trustees of the Asia Pacific Region Benevolent Trust (APRBVT) and we are happy to say that at the time of publication funds have been provided for the support of three construction site schools in Bangkok. Bangkok members are now Lighthouse Club International members and we look forward to hearing and seeing updates on the schools.

We are also delighted to say that the UK, namely the Lighthouse Construction Industry Charity which covers all 21 clubs in the UK & Ireland, have also recently become members of Lighthouse Club International.

Successful one-day and two-day construction conferences were held in March and May in Hong Kong. March features in this edition, May was a little too late for the Editor's deadline. I say "successful" as monies raised totalled in excess of HK\$ 700,000, 50 percent of which goes straight into the APRBVT. However, "successful" is not the word I would use to describe the number of attendees at these events and I encourage, nay implore, all branches to work a little harder to ensure that some of their members attend. After all, the reason

behind the conferences is to raise funds in order to help the people in all locations where there is a Lighthouse Club.

I am always encouraged by growth or, in some cases, resurgence, and am delighted that Vietnam has recently held a get-together after a gap of some months. Potential new branches are in the offing too in New Zealand, Korea and the Middle East. Onwards and upwards!

Lastly, the need for new and, particularly, Young Members is paramount to the growth and longevity of this organization. Hong Kong and Kuala Lumpur have very active Young Members Groups and I would call upon all branches to do their utmost to start these as soon as possible.

To those of you planning Summer holidays, may I wish you a very pleasant time and plenty of sunshine wherever you are.

Rod Noble
Chairman
Lighthouse Club
International



About The Lighthouse Club

The Lighthouse is the magazine of Lighthouse Club International, originally established in 1998 as Lighthouse Club Asia Pacific Region and superseded in November 2017 by Lighthouse Club International. With its roots in England in 1956, the Hong Kong Branch was formed in 1986.

The aims of the Lighthouse Club are to promote good fellowship amongst its members who work in or are associated with the construction industry and to provide charitable assistance to those in need within the construction industry and to their dependents in qualifying cases.

In addition to the charitable works of the individual branches of the Lighthouse Club, Lighthouse Club International has two related Hong Kong based charities which provide charitable assistance worldwide: The James Battersby Lighthouse Club Educational Trust which provides assistance for education and training to qualifying young persons; The Lighthouse Club Asia Pacific Region Benevolent Trust which provides assistance to relieving poverty and financial need to persons currently or previously employed in the building and civil engineering industries and allied trades.

Honorary President

Nicolas Borit

Honorary Life Chairman

John Battersby

Honorary Life Members

Barry Adcock – Hong Kong

Willie Kay – Singapore

Les Leslie – Hong Kong & UK

Nick Longley – Hong Kong & Australia

Steve Tennant – Hong Kong

Phil Thoburn - Manila

In This Issue

The Lighthouse

6 Benevolence

- *Mates in Construction aims to improve mental health*

- *LHC Chairperson scales heights and raises HK\$40,000*

- *Hong Kong Branch Treasurer's Report for 2017*

14 Advertorial

Drones are changing the way we see the world

Features

17 Managing trees in the urban environment

25 Gammon and partners to develop exoskeleton

26 Hong Kong's Annual Health and Safety Awards

30 Robert Gordon reports on Design For Safety 2018

Branch Updates

34 Hong Kong

42 Cambodia

44 Malaysia

47 Philippines

48 Macau

50 Singapore

53 Australia National

54 Thailand

Members

58 Lighthouse Club International

Corporate Members

Membership Info

Events

60 Calendar of forthcoming member's events July to September



THE LIGHTHOUSE Spring 2018

Lighthouse Club International
Suite 1901-2, Hopewell Centre
183 Queen's Road East, Wan Chai, Hong Kong

Tel : +852 2736 9885
Fax : +852 2687 2252
info@lighthouseclubhk.com
Administrator : Elaine Man

Editorial Committee:
Mike Atkin (Editor) / Mike Staley / Elaine Man /
Janey Rogers / Steve Tennant / John Battersby /
Michael Hoare

Publisher: Mike Staley
E : publisher@rofmedia.com
T : +852 3150 8988

Advertising: Bryan Chan
E: bryan@rofmedia.com
T: +852 3150 8912

Designed & Published by ROF Media

Executive Committee:

Chairman	Rod Noble roderick.noble@39essex.com
Immediate Past Chairman	Bob Park rmpark50@gmail.com
Chairman Elect	Paul Roberts paulroberts@hka.com
Deputy Chairman	John Battersby johnbattersby@bkasiapacific.com
Secretary	Steve Tennant stevetennanthongkong@gmail.com
Treasurer	Phil Clarke phil.clarke@cotai.venetian.com.mo
Membership Secretary	Jim Chessell jchessell@bkasiapacific.com

Elected Branch Representative:

Australia	Paul Roberts paulroberts@hka.com Nick Longley nick.longley@hfw.com
Cambodia	Kerr Thomson kerr@achmanagement.com

Hong Kong	Barry Adcock barry.adcock@gmail.com John Battersby johnbattersby@bkasiapacific.com Steve Tennant stevetennanthongkong@gmail.com
-----------	--

Macau	Keith Buckley kbuckley0911@gmail.com Phil Clarke phil.clarke@bcamacau.com
-------	--

Malaysia	Bert de Munck bert.demunck@plus3.com.my
----------	--

Myanmar	John Anderson johna@meinhardt.net
---------	--------------------------------------

Philippines	Sam Powell samuel.powell@hmrphils.com
-------------	--

Singapore	George Wall gwall@asgardprojectsolutions.com Jim Chessell jchessell@bkasiapacific.com
-----------	--

Thailand	John Pollard johnp@meinhardt.net
----------	-------------------------------------

Vietnam	Colin Johnston cjohnston@bkasiapacific.com
---------	---

FRIENDS FOR LIFE

Construction industry workers in Australia have an important ally in preventing suicides and building better mental health – **MATES in Construction**

Text: Michael Hoare

Images: Mates In Construction

The men and women who work under a hard hat hold a celebrated position in Australian popular culture. Construction workers are seen as fit, strong, street smart and capable problem solvers. Their employers ensure good conditions onsite, with accident prevention paramount. They are often well-paid and hard working.

Compared to the conditions experienced by workers elsewhere within The Lighthouse Club network, employees in Australia's construction industry might be considered well-off. But there is also a darker safety issue that MATES in Construction is bringing to the attention of the industry and the public.

The statistics around the mental health of the women and men – but predominantly men – in the construction industry are alarming. Every year, 190 Australians working in construction take their own lives – one worker every second day of every year.

Consider for a moment these saddening facts:

- Men who work in the construction industry are six times more likely to die from suicide than in a workplace accident;
- Construction industry workers are about 70 percent more likely to kill themselves than other employed men; and
- The cost of a single suicide to the community is about A\$2.6 million.

Mates for working men

MATES in Construction was championed by Jorgen Gullstrup. A plumber, he was alarmed at what he saw onsite: men trying to live up to a “tough guy” stereotype but who found it difficult to deal with the complications of a taxing job and did not have a forum to discuss their problems at home or at work.

He set about crafting a programme of training and support, based on the premise of “mates helping mates”. MATES in Construction was launched in Queensland in 2008 and in the space of five years, Griffith University research showed that suicide rates among construction workers had fallen by about 8 percent compared to the wider community. The scheme has expanded to mining and energy, and the programme has been rolled out in the majority of Australian states and territories, with about 128,000 workers having taken part.

The Lighthouse Club International has played its part, with two of the most active Australian branches based in Brisbane and Perth helping to fund the programme.





“The programme raises awareness that there is a problem with suicide in our industry. It highlights some of the contributing risk factors and presents workers with solutions”, says Godfrey Baronie, the MATES in Construction chief executive for the state of Western Australia.

“I’ve heard too many stories about the tragedies that affect workers in our industry, and it’s heartening to hear back from our volunteers and staff that suicide and mental illness is being discussed openly. This shows the MATES programme is working,” Baronie says.

Three aims

MATES in Construction hopes to raise awareness about suicide in the workplace, wants to make it easier to access help and ensure that any help offered is practical, professional, appropriate and safe. Funding to the programme pays for confidential case management and field officers that give face-to-face support to workers onsite.

“Our programme puts resources onsite because the philosophy that drives MATES is that suicide is everyone’s business. We offer access to help and train entire sites to ensure there is a network of support for co-workers and others that might need it,” says Baronie.

The programme also places trained volunteers onsite, connecting workers to support at the time when they need it most. They are identified by a green or blue sticker on their helmet. The volunteers say they wear them with pride.

Mates everywhere

Baronie says the MATES in Construction board would like to see the programme in place across the country and on as many sites as possible, and even internationally.

As part of that mission, “MATES” is spreading into the mining and energy sectors. A year after the mining programme was established, more than 4,000 workers have heard about the organisation.

The MATES programme is timely, with a mounting body of research showing that the “fly-in, fly-out” rosters that are common in the mining and energy sectors can be particularly taxing on the mental health of workers and their families.

A recent study published in the Medical Journal of Australia found that more than a quarter of these FIFO workers say they feel distressed and withdraw socially, endure relationship problems or have financial problems that are linked to their work.

Researchers surveyed 1,100 workers from 10 mining sites in Western Australia and South Australia. The overall rate of psychological distress, about 28 percent, was about twice that of the wider community.

It’s clear that there’s a real need for mates on every worksite.

Help is available if you, a workmate or family member is struggling. The MATES helpline provides 24-hour support by calling 1300 642 111 in Australia.





LIGHTHOUSE CLUB HONG KONG CHAIRPERSON SCALES NEW HEIGHTS!



**KINABALU PARK
WORLD HERITAGE**

*(LOW'S PEAK - 4,095.2 M,
MT. KINABALU)*

**ID KAHANDAMAN DI
GUNTING BIN LAGADAN (1964)**

*HUGUAN MANANANUD TUTUMAKAD NULU
KINABALU IH NOKOPOGULU*

**KABONG om KURO (1888),
LEMAING KOMO (1851)**

MANANANUD NULU KINABALU

Despite difficult weather and torrential rain, Judy Gin, Nga Yan Yu and Simon Wilde joined the chairperson of the Lighthouse Club's Hong Kong branch, Cordia Yu, in conquering all 4,095 metres of Malaysia's and South East Asia's highest peak, Mount Kinabalu last month to raise money for the Lighthouse Club.

The successful climb has taken them to over 80% of their fundraising target with donations still coming in. The team have so far raised HK\$40,000 for the Lighthouse Club and would like to thank the donors who have already contributed generously. The team are keen for final sponsorship to reach their HK\$50,000 target. Contributions can be made via the Simply Giving page.

"It was a fantastic experience and an incredibly tough two days," said Simon Wilde. "It was the beginning of the monsoon season so we faced both heavy thunderstorms and freezing temperatures.

"The hike was even tougher than expected as the rain washed away one of the bridges on our route, so we had to make a difficult detour through thick jungle vegetation and then traverse a tricky river gully. The months of training paid off though and everyone stepped up to the challenge."

Congratulations to the mountaineers, another fabulous effort in fund-raising for the Lighthouse Club.



ENTERPRISE LEVEL

As a leading precision aerial solutions provider based in Hong Kong and Macau, **Dronesurvey Asia** is your go-to source for industrial and enterprise drone solutions, and industry-specific unmanned aerial systems.

We provide independent expert advice and consultancy services for all types of drone program implementation, as well as advanced, on-site aerial data capture services covering mapping, inspection, monitoring and security.

DRONE SOLUTIONS



← Dronesurvey Asia is the authorised distributor for the unique Flyability Elios internal inspection drone system.



Discover how drones can advance your business. Contact us today for a free consultation:
T: +852.3725.4890 E: info@dronesurvey.asia W: dronesurvey.asia
 2602-03, 26/F. BEA Tower, Millennium City 5, 418 Kwun Tong Road, Hong Kong

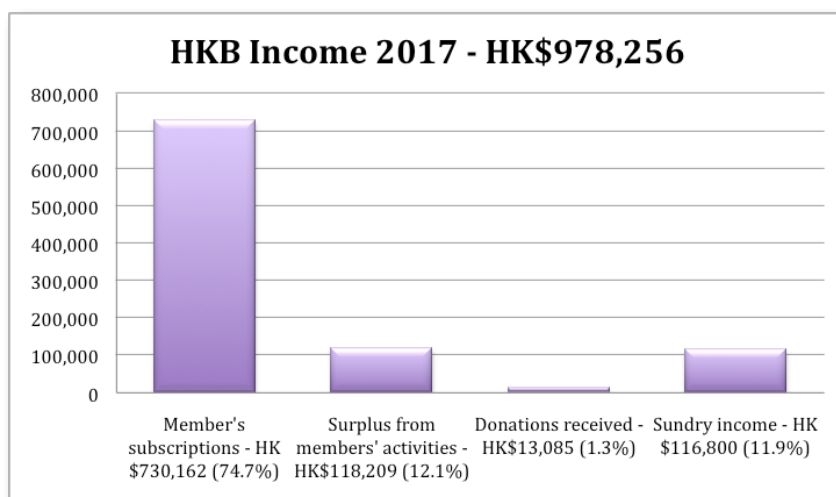
Lighthouse Club Hong Kong Branch 2017 Accounts

The accounts of the Lighthouse Club Hong Kong Branch (HKB) for the year ended 31 December 2017 were submitted to the auditors in April 2018 and are currently being audited. The accounts were presented to the Members at the AGM held on 4 May 2018.

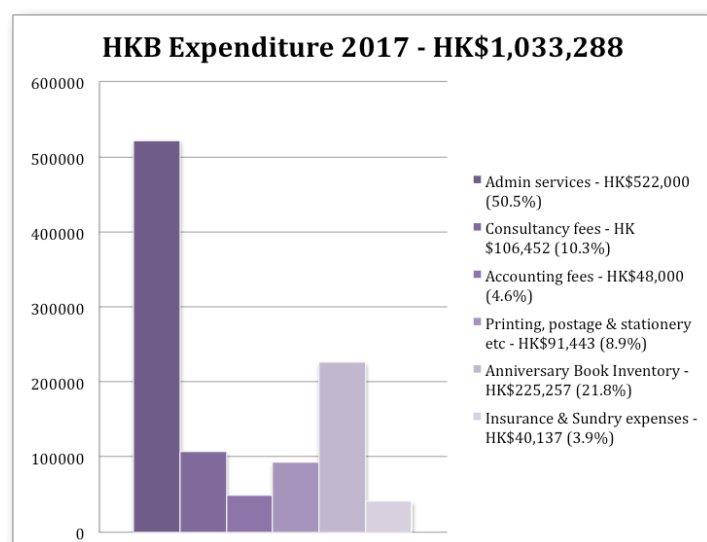
In 2017 the HKB recorded a deficit before donations of HK\$(55,032) (2016 – a surplus of HK\$931,844).

	2017	2016
Income	978,256	1,828,637
Expenditure	(1,033,288)	(896,793)
(Deficit) / Surplus for the year before donations (HK\$)	(55,032)	931,844

The HKB's income and expenditure during 2017 are summarised as follows:



HKB's income in 2016 was substantially higher than in 2017 because of sponsorship received in connection with the various 30th Anniversary events held in 2016, including the two-day International Conference. HKB did not organise any conferences in 2017.



Looking ahead to 2018, it is expected that HKB's expenditure will reduce as the consultancy costs of HK\$106,452 and the book inventory costs of HK\$225,257 are non-recurring items.

Donations made by HKB in 2017

The HKB donated HK\$43,300 to The Lighthouse Club Asia Pacific Benevolent Trust in 2017, which was the surplus generated at the International Gathering held in April 2017.

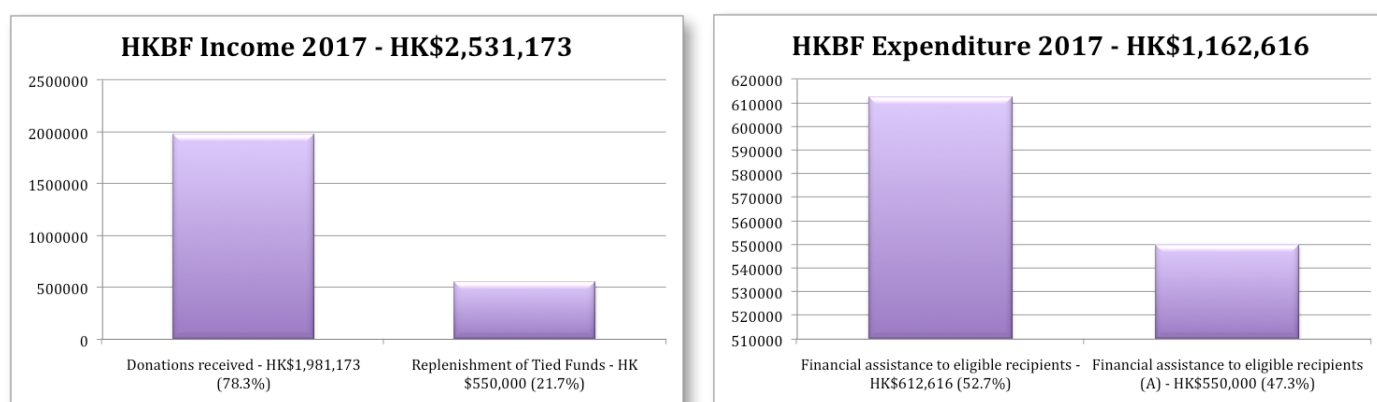
Lighthouse Club Hong Kong Benevolent Fund Accounts for 2017

The accounts of the Lighthouse Club Hong Kong Benevolent Fund (HKBF) for the year ended 31 December 2017 were submitted to the auditors in April 2018 and are currently being audited.

The HKBF returned a surplus in 2017 of HK\$1,368,557.

	2017	2016
Income	2,531,173	2,108,987
Expenditure (i.e. financial assistance to eligible recipients)	(1,162,616)	(1,222,960)
Surplus for the year (HK\$)	1,368,557	886,027

The HKBF's income and expenditure during the year were as follows:



The HK\$1.162 million of financial assistance provided by the HKBF supported 25 cases in 2017.

Financial assistance to eligible recipients (A) utilizes "Tied Funds" provided by MTRC and others for use in connection with incidents occurring on their projects.

As of 31 December 2017 the financial position of The Lighthouse Club Hong Kong Benevolent Fund was as follows:

	2017	2016
Current assets		
Amount due from The Lighthouse Club Hong Kong Branch	300,696	466,196
Other receivables	26,000	36,000
Cash and cash equivalents	7,852,325	6,551,718
	8,179,021	7,053,914
Current liability		
Accrued expenses	329,850	573,300
NET CURRENT ASSETS	7,849,171	6,480,614
Financed by:		
Unrestricted funds	6,624,171	5,255,614
Restricted funds (i.e. Tied Funds)	1,225,000	1,225,000
TOTAL FUNDS	7,849,171	6,480,614

Other charitable activities

- The Hong Kong Construction Association (HKCA) continued to make funds available under their Accident Relief Fund (ARF) to assist the Lighthouse Club Hong Kong Branch in its charitable work. During 2017 the HKCA ARF supported 4 cases with funding of over HK\$63,000.
- The James Battersby Lighthouse Club Educational Trust paid out more than HK\$105,000 in support of 4 cases to Hong Kong beneficiaries in 2017.
- If you have any queries regarding the financial affairs of the Club or its charities please feel free to contact the Hon Treasurer, Neil Roberts via info@lighthouseclubhk.com

A leading projects
and construction
practice in mature
and emerging markets
across all infrastructure
classes.

“

Tier 1: Hong Kong Construction

APAC Legal 500, 2018

Clyde & Co has 'one of the best
construction practices in the region'.

APAC Legal 500, 2017



Ian Cocking

Partner, Hong Kong
T: +852 2287 2802
E: ian.cocking@clydeco.com



Gilbert Kwok

Partner, Hong Kong & Beijing
T: +852 2287 2804
E: gilbert.kwok@clydeco.com



Dennis Wong

Partner, Hong Kong
T: +852 2287 2803
E: dennis.wong@clydeco.com

Awarded Outstanding
Practitioner of the Year by
Asialaw Asia Pacific Dispute
Resolution Awards 2017

Ranked as a Leading
Individual for Construction by
Legal 500 Asia Pacific 2018

Ranked as Noted
Practitioner in China by
Chambers Asia Pacific 2018

For more information visit clydeco.com



MTR's Journey with the Nature

- Water Recycling in Depots •



Scan the QR code to
watch the video now.

MTR cares about our community; together we are
working to protect and conserve our environment.

caring for life's journeys



Drones: A Business Revolution in the Air

Since the launch of the first DJI Phantom in 2013, drones have opened up a whole new perspective on how we see the world.

Drones are certainly fun, and have created a slew of recreational pastimes. But drones have also opened up a host of new commercial opportunities, giving enterprises the ability to collect data and enhance business processes in ways that were never possible before.

Growth in drone sales has been nothing short of spectacular. Almost 3 million drones were shipped worldwide in 2017, a 39 percent increase on 2016, with an estimated value of well over US\$6 billion. By 2020, the value of global drone shipments is expected to surpass US\$11.5 billion, and easily exceed 7 million shipments.

Consumer growth has actually shown signs of flattening of late, but the pace of innovation and technological advance is continuing unabated, with the focus now moving to the commercial and industrial sector.

Much of the technological innovation that has made consumer drones so successful – GPS navigation, image stabilisation, object avoidance, auto-return – is now spilling over into more specialised industrial drone systems. Businesses are turning to drones and unmanned aerial system (UAS) technology as a way to improve production workflows, drive efficiencies, and not insignificantly, enhance safety.

But why are drones proving so useful? To answer that question, we need to look at what drones are good at right now, in the current business context.

Media focus often seems to be on the more sexy applications, like package delivery and aerial taxis. Amazon, DHL and UPS are all experimenting with drones for package delivery. However unresolved questions remain around how such deliveries would scale in reality, and whether they'd actually save costs in the long run.

Drones as aerial taxis is another area that seemingly has potential. Chinese startup Ehang recently flew its first prototype electric drone taxi in Guangzhou, and Uber is committed to investing in an long term electric-powered vertical take-off and landing (eVTOL) taxi service.

In both these cases, the drone technology would have to be not just safe, but also fully autonomous and automatic. What's missing though is a robust and proven air traffic control system able to safely manage all these devices – not to mention a slew of unresolved regulatory issues.

Right now, given current technologies and what is on the immediate horizon, we see drones as an effective

and viable aerial platform for a sensor. A sensor is of course a way of collecting data, so in short, drones are most useful as an aerial data collection tool: a device able to gather information in ways that are more time-saving, more cost-efficient and effective, or simply new because such data collection wasn't previously possible.

The most obvious type of sensor is of course some kind of camera: whether that be a high definition video or stills camera, or something more specialised, like an infrared or thermal camera. In fact, almost any kind of sensor can be fitted to a drone. Drones have been used to detect leaks of gas and vapour, monitor radiation levels in nuclear facilities, even detect the corona discharge around high voltage electrical installations.

Given that data collection is key, one of the sectors most benefitting from the use of drones at the moment is construction and engineering. Drones have a role to play right across the construction process: from initial evaluation and modelling of a site, through design iteration, surveying, on-site monitoring and project management, to final delivery – including of course, sales and marketing.

Drones are already being used extensively for general site monitoring. Grabbing a quick photo and video overview of a site from the air, gives engineers, project managers and stakeholders an immediate and detailed picture of what's going on.

Getting more sophisticated, drones enable forms of over-the-site photogrammetry that were previously impractical or impossible before. GPS-enabled drones can now follow precise flight patterns, capture consistent geotagged photo-sets, and process that data into orthomosaic maps and 3D models with unprecedented levels of detail and precision.



Precision can be enhanced up to survey-grade level with the application of Ground Control Point data (GCP) into the production processes, resulting in maps and models

with XYZ precision in the 30-50mm range. GCPs can be time-consuming to set in themselves, but with the latest RTK- or PPK-equipped drones, the number of GCPs required can be reduced to a minimum, further saving time and cost.

Once a map or model is deemed accurate enough, Digital Surface Models (DSMs) can be generated from the same data set, allowing for quick and precise area and volume measurements of material or excavations on site.

Beyond the construction cycle, in the area of structural inspection, drones have an increasing role to play in the upkeep and maintenance of buildings, plant, and critical infrastructure. One day, we may see drones actually carrying out repairs at height, but right now, drones are already being used for up-close and detailed inspection in locations where access is difficult or often dangerous. Remote aerial inspections started in the oil and gas industry, where drones are now firmly established for inspecting of both offshore and onshore facilities.



This is now spilling over into all a range of inspection applications, including road and rail infrastructure (bridges, highways, tunnels, flyovers), shipping and ports, power generation infrastructure and networks, and indeed any type of tall building.

The facades and cladding of any tall building are subject to ageing, adverse weather, general wear and tear, and many other factors. Singapore for instance has recently mandated greater frequency of facade inspections for many of its taller, older buildings, after a spate of falling debris incidents. Drones are actively being encouraged for their efficiency in conducting the kind of detailed, up-close inspection that will be required.

There is even a drone designed for up-close inspection for hard-to-reach indoor spaces and locations. The flyability Elios is a collision-tolerant drone with its own spherical cage, allowing it to fly inside difficult internal spaces, such as plant rooms, turbines, boilers, heat exchangers, storage tanks, ship cargo or ballast tanks, as well as water and drainage infrastructure.

Drones are here to stay, and will be an increasing presence in the skies around us in the coming years. The technological capabilities of drones are expanding and evolving at a rapid pace, and trying to figure out how drones can play an effective role in your organisation – both now and over the long term – can be a daunting exercise.

At Dronesurvey Asia, we work with companies to figure out the most appropriate drone applications and strategies for their business. We scour the world, evaluating the latest drone technologies from all corners – not just the drones themselves, but also support technologies like specialised payloads, and data processing technologies. We strongly believe that drones are only as effective as the data they produce, and being able to use and disseminate that data effectively in the business context is critical.

We provide strategic advice on implementing drone tech into your workflows, as well as more immediate outsourced services for precision mapping, 3D modelling, structural inspection and security monitoring.

Drones have a clear role to play in the Hong Kong context, not just in the jobs they can perform in the skies around us, but also in terms of the technological opportunities available to those with the vision to develop new applications and new services to meet the business needs of today – and tomorrow.



Image 1: Screenshot of an orthomosaic map and 3D model generated by Dronesurvey Asia for a major construction project on the South side of Hong Kong Island

Image 2: The author operating a drone for inspection inside a major tunnel project in the North East New Territories

Image 3: Dronesurvey Asia is the official reseller and support partner for the Flyability Elios in Hong Kong and Macau, a unique drone designed for up-close inspections inside hard-to-reach and hazardous internal environments.

SHARED INNOVATION

www.dragageshk.com

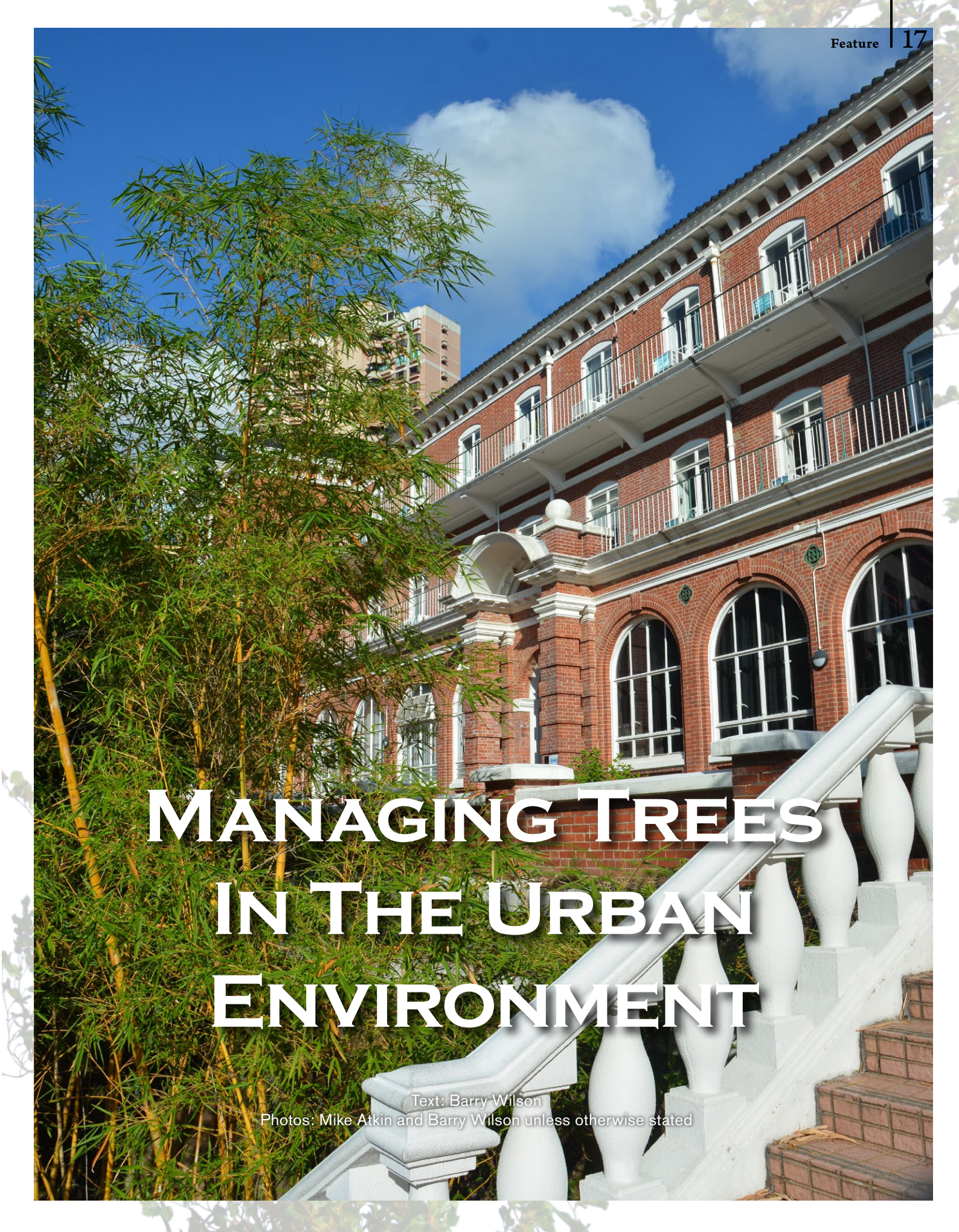
TUEN MUN-CHEK LAP KOK LINK - NORTHERN CONNECTION SUB-SEA TUNNEL SECTION

MORPHEUS

HEALTH & SAFETY
A SHARED COMMITMENT!



A member of the Bouygues Construction group



MANAGING TREES IN THE URBAN ENVIRONMENT

Text: Barry Wilson

Photos: Mike Atkin and Barry Wilson unless otherwise stated

WHY SUDDENLY ALL THIS FUSS ABOUT TREES?

Recently two large Chinese banyan trees growing on Bonham Road were abruptly removed over public safety concerns causing public furore and fuelling the debate about whether in fact trees or the public are in most need of protection.

Last summer it was reported that the family of a pregnant woman, fatally injured by a falling tree in Mid-Levels in 2014, was to sue the owners of the property where the tree was located. Then a tree outside a public housing estate in Fanling collapsed on four passing vehicles.

Most surely, developing the city today would be much easier without the need to work around trees on development sites, especially within urban areas, yet the city does also need to protect its trees and has detailed processes in place to achieve just that. The 'hows and whys' however remain a bit of a mystery to many in the construction industry.

This guide by Barry Wilson Project Initiatives gives a root and branches outline to working with trees.

IS ALL THIS TREE PROTECTION MALARKEY A NEW IDEA?

Somewhat surprisingly perhaps, the first provision for protection of trees appears in the 1845 Ordinance for Prevention of Nuisances. A \$100 fine was imposed for the 'felling, cutting, destroying, or injuring of any standing or growing tree, shrub, or underwood, any grass sod or turf'. The need of villagers for both fuel and building timber had stripped hillsides of their vegetation, leaving only orchards, inaccessible areas and fung shui groves. By 1865 penalties had been upgraded to a felony crime resulting in prison sentences of up to 2 years, potentially with hard labour and whipping!

Street tree planting first took place in 1847 on Queen's Road and continued through the following decades to most major roads. Even then, street activities, building works and road alterations proved a major threat to trees. Photos show that just five years after planting trees along Queen's Road West in 1855 only one was surviving and continual replacement was necessary. By the 1870's afforestation of the hillsides was initiated, not only to supply timber but perhaps also to improve the air quality and provide amenity

according to records. Tree matters fell under the authority of the Colonial Secretary and nurseries were established to raise trees from seed, resulting in the creation of plantations of several million trees by the end of the century.

Theft and damage continued to be widespread however and even the appointment of forestry guardians failed to stop the need for the enactment of a "Tree Preservation Ordinance" in 1888 and for further legislation in 1910, 1917, 1920 and 1937.

Today's protection laws emanate from those above, covered under the Crimes Ordinance, Theft Ordinance, Summary Offences Ordinance and Public Health and Municipal Services Ordinance whilst specific provision is made in the Forest and Countryside Ordinance, Country Parks Ordinance and Antiquities and Monuments Ordinance. That's a lot of different Ordinances to keep track of, perhaps helping to explain why there is often some public confusion.

ARE TREES REALLY AFFECTED BY CONSTRUCTION? THEY GROW BACK DON'T THEY?

We all know trees have roots, but because they are hidden from view it is often forgotten how important they are. Ground excavation operations can seriously damage trees ability to survive but cutting off their water and food supply. A rule of thumb guide suggests that the aerial volume of leaf and branches in the tree crown are mirrored underground by root spread volume. The majority of roots are generally lying flat and close to the surface however. This explains why a pot plant's growth is always limited by the size of its pot. Cut away the roots and the crown will be too big and die back.

Trees are living things, so like us they are rather sensitive to change but can't shout out about it. They don't like flooding or changes in level around them, either higher or lower, which can easily cause drying out or suffocation. Compaction of ground meanwhile can make it difficult for their roots to spread and allow subsequent branch development. Expectations of tree growth and performance in terms of height and spread can always be anticipated in relation to the ground condition. That's why so many street trees, planted in small pits and planters and surrounded by building foundations and compacted road base, deficient in reasonable soil provision, have no room for root development and then remain small and stunted year after year. Surviving but not thriving.

Damage to trunk and branches frequently occurs both on the street and on construction sites, often inadvertently by mechanised equipment and vehicles. The bark is a protective skin, puncture it and the tree becomes susceptible to temperature extremes, UV radiation, fungal and bacterial disease agents and harmful chemicals leading to ongoing problems and health deterioration.





2002 - Protecting an old champion tree atop of the East Rail Extensions in Tsim Sha Tsui. Photo supplied by PRC Magazine.

IT'S NOT MY PROBLEM. WHO IS RESPONSIBLE FOR TREES?

Since 1997, all land has become the property of the People's Republic of China. The HKSAR government is responsible for its management, use and development. Land considered as 'private land' is in fact leasehold property and anything done to the property, including to trees, is governed by the terms of the lease. As such trees in Kong Kong are either managed on government land by the department responsible for the maintenance of that area or are required to be managed by the lot owner under the conditions of lease.

Lot owners need to check their lease conditions for a Tree Preservation Clause outlining restrictions, since older leases may not have such a Clause. Lands Department Lands Administration Office ("LAO") Practice Note No. 7/2007 - Tree Preservation and Tree Removal Application for Building Development in Private Projects states that "lot owner(s) ... have a responsibility in certain leases to ensure that trees are not unnecessarily felled or interfered with without ... written consent. As such approvals to manage or undertake works impacting trees should be made through Lands Department. Further requirements for tree preservation are imposed via the planning system for new development through submission of a Landscape Master Plan, Landscape Proposal and/or Tree Preservation Proposals.

For works affecting trees to be carried out on government land, Development Bureau Technical Circular (Works) No. 7/2015 - Tree Preservation sets out the policy on tree preservation from feasibility, planning, design, construction to post-construction stages of a development, the procedures for control of tree felling, transplanting and pruning in Government projects, and departmental responsibilities in handling proposals on tree preservation and removal.

Meanwhile the Greening, Landscape and Tree Management (GLTM) Section was established under the Works Branch of Development Bureau in 2010. The Tree Management Office (TMO) is advocating more professional approaches to tree management among government departments and in the community at large and is tasked amongst other issues to focus on tree risk management, the tree complaint handling mechanism and emergency response arrangements. Information concerning tree care, maintenance and procedures on both public and private land is available on GLTM website at www.greening.gov.hk.

ARE ALL TREES THE SAME OR SHOULD SOME BE CONSIDERED DIFFERENTLY?

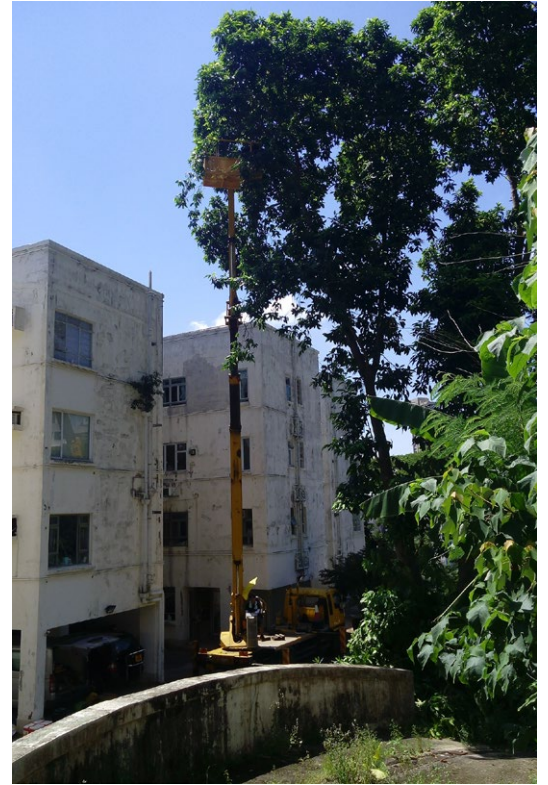
Looking at trees on our hillsides and roadsides, particularly in the New Territories, it can be noticed that large numbers of what might be termed plantation trees dominate. In the stages of afforestation through the 1970's and 1980's the planting strategy was to quickly grow extensive tree cover to provide visual amenity and prevent soil erosion against a backdrop of repeated landslides. Exotic tree species with hardy and fast-growing characteristics, many originating from Australia, were selected and widely used. After decades of extensive tree planting and forest coverage gradually increasing, the strategy and focus has recently moved to improving ecological value and biodiversity. Departments involved in the design of public works projects are now encouraged to specify native plant species wherever practicable, providing more diversity and offering food sources to local wildlife. Some of these are extremely attractive, colourful and even unique to Kong Kong.

A large number of what are considered "Important Trees" have been identified on unleased Government land within built-up areas and tourist attraction spots in village areas. These are now documented on a public Tree Register, www.greening.gov.hk/treeregister/map/treeIndex.aspx and include Old and Valuable Trees (OVT) and Stone Wall Trees (SWT). 'Registered Trees' are subject to regular monitoring whilst problematic trees are also identified from annual Tree Risk Assessment undertaken. The planning and design of a project must take into account the need to preserve and avoid any damage to registered trees and precautionary measures are required to preserve and protect them during construction.

WE NEED TO FELL THOSE TREES. HOW MANY SHOULD WE PLANT INSTEAD?

The previously mentioned two circulars give a clear guide to compensatory planting. Both LAO 7/2007 and DEVB TCW No. 7/2015 state that in general a ratio of not less than 1:1 in terms of both quality and quantity is required. The 'quantity' however does not mean the number of trees, rather the aggregated trunk diameter. So all the existing trees need measuring and adding up into one big thick tree. The quantity of replacement trees therefore can vary depending on the type of planting adopted





in compensation. Meanwhile the quality is rather more subjective, based on the special characteristics of the trees, the site and the opportunities available.

It's important to remember that there is a legal presumption against tree removal. So if a tree can be kept it should be, and justifications for removal will need to be concrete. Other key factors in compensation suggests: -

- Sufficient space for growth needs to be provided. You can't just squash in as many as you need.
- The right type of tree needs to be planted, and in the right place.
- Planting within the project lot is preferable. Planting outside the lot could be acceptable with clear advance arrangements provided.
- Deviation from the basic compensatory principle needs to be fully and thoroughly justified.

At the end of the day there are a lot of factors come in to play. Get a professional to advise you!

WHO CAN HELP ME? IT'S AN EMERGENCY!

Members of the public may report problematic trees to the "1823" Call Centre. Operating round-the-clock and with the capability to receive public complaints and enquiries via telephone, email, fax or letter.

Trees are assets rather than liabilities, but like all things need care and management to ensure they perform to their best. If you need help to deal with trees on your lot then you can always approach a Certified Arborist. They generally offer on-site services including tree survey, risk assessment and typhoon preparation.

If there is a Tree Preservation Clause in your lease conditions then you are going to need professional help for either small scale work or large scale development. Submissions to and approvals from Lands Department will require the certification of a Hong Kong Registered Landscape Architect (RLA). For the sake of public safety, tree pruning or removal can first be carried out by the owner of a private lot if the tree within the lot is considered to pose an immediate danger to the public, but only after assessment by an RLA employed by the lot owner. Best to make that call first before taking any action.





Tree planting on Pedder Street circa 1870.
Photo courtesy of University of Hong Kong Libraries.

Barry Wilson is a Hong Kong Registered Landscape Architect, Member of the Hong Kong Institute of Landscape Architects, UK Chartered Landscape Architect and Council Member of the Hong Kong Institute of Urban Design. His company, Barry Wilson Project Initiatives, has been consulting on public and private projects in Hong Kong for more than 20 years.

ACKNOWLEDGEMENT:

Thanks to Mathew Pryor, Head of the Division of Landscape Architecture at the University of Hong Kong for his historical notes published in Yuan Lin Journal 2015 and to University of Hong Kong Libraries for the archive photographs.

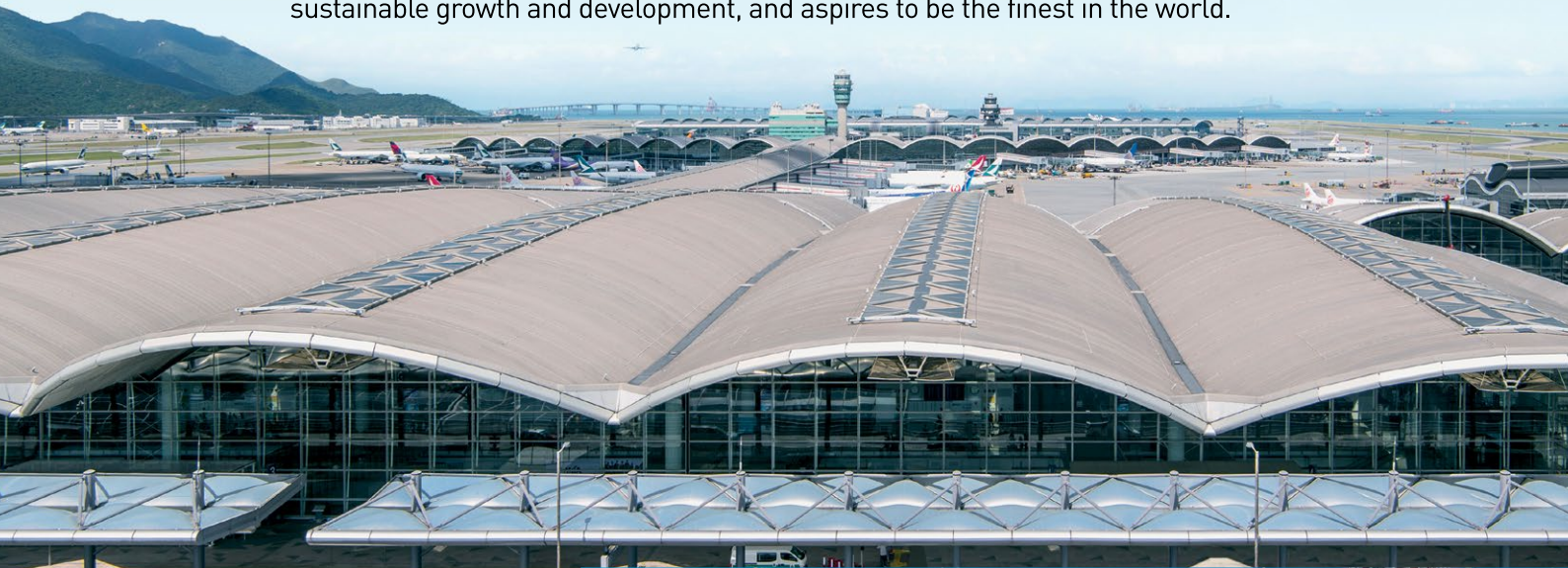
Hong Kong Landscape Architects Registration Board
The Landscape Architects Registration Board (LARB) of Hong Kong was established on 10 September 1997 under the Landscape Architects Registration Ordinance - Cap. 516 (LARO). <http://larb-hk.org/>

International Society of Arboriculture
The International Society of Arboriculture (ISA) was founded in 1924 to promote the professional practice of arboriculture.

www.isahongkong.org



Hong Kong International Airport (HKIA) has a global network covering over 220 destinations worldwide, including over 50 in the Mainland. It is one of the busiest aviation hubs in the world, handling 72.9 million passenger trips and moving 5.05 million tonnes of cargo and air mail in 2017. HKIA is committed to sustainable growth and development, and aspires to be the finest in the world.



Energy for Life

Delivering
Reliability





A joint effort to develop construction technology



Gammon Construction Limited (“Gammon”) signs a Memorandum of Understanding with ATOUN Inc. (“ATOUN”), a subsidiary of Panasonic, and Shun Hing Systems Integration Company Limited (“Shun Hing”) on the use and development of new exoskeleton technology (“ExoTech”) to further improve construction safety, efficiency and productivity.

Under the Memorandum, Gammon will work closely with ATOUN and Shun Hing in the development of the ExoTech in Hong Kong.

Gammon purchased 10 sets of the Assist Suit Exoskeleton (The Next Generation Model) and will be conducting trials on its construction sites.

“We are pleased to partner with ATOUN and Shun Hing in pursuing this venture and be the first in trying out the new technology in the construction industry,” Thomas Ho, Chief Executive of Gammon said. “By using the exoskeleton technology, we aim at improving construction health and safety as well as working conditions and competence.”

The Assist Suit Exoskeleton weighs only about 4kg. When a worker is about to pick up a heavy object, the Suit is able to sense his movements and to go into operation to provide back support. It helps reduce strain by as much as 10kg, lowering the risk of back injuries common among construction workers.

As the end-user, Gammon will provide pragmatic feedback and input to ATOUN and Shun Hing for advancing the technology to the next level.



Lighthouse Club Hong Kong Health & Safety Awards

On the March 16, a large gathering at the Garden Lounge of the Hong Kong Club gave testimony that the event remains as attractive as ever with record entries being received for the categories of Golden Helmet and Safety Leadership.

In addition a new category Health & Safety Supplier of the Year was initiated and attracted numerous high quality entries paying testimony to the efforts of the supply chain in its support of construction health and safety.

“It was extremely difficult to select a winner”, stated Stephen Pollock the safety sub- committee chair, he went on “such was the number and quality of entries we formed a number of separate judge panels to do justice in assessing the obvious efforts of many”.





The Golden Helmet was awarded to Dr Philco Wong, Projects Director of MTR Corporation who has been a long term supporter of Lighthouse Committee and advocate of sharing safety resources and information amongst the Hong Kong construction sector. The entries for two further candidates Tony Small of Gammon and Ian Livingston of the Airport authority were so compelling that the committee made special awards of Highly Commended Approach to Safety Leadership with KL Lee of Dragages HK receiving a commended award in the same category.

The Derek Smyth Safety Leadership award once again went to the Airport Authority Hong Kong who demonstrated in their submission detailed plans to protect the health and safety of its workers. Two further submissions from MTR Projects Division and West Kowloon Cultural District were so extensive in their commitment that the panel felt merited 'highly commended' recognition in this category.

Lastly the first winner of the Health & Safety Supplier of the year award went to the Lighthouse Club's long term safety partner Hilti (HK) Limited with Liebherr (HK) meriting highly commended in this same category.

As a closing gesture to the awards Ada Fung, President of the Lighthouse Club HK, was grateful to receive a fundraising cheque from Hilti (HK) of \$30,000.00





The Lighthouse Club's 3rd International Design for Safety Competition

Text: Robert Gordon



Gold Award -
Dragages - Bouygues
Joint Venture for the
"The Peanut Shaft
& TBM Launching
Structure"

On 16th March 2018, the Lighthouse Club hosted the very well-attended awards ceremony for the 3rd year of the International Design for Safety Competition at the Hong Kong Club. The awards have been raising awareness of the role of the designer in safety whilst at the same time highlighting those exemplary designers that have truly taken to heart the need to ensure the health, safety and welfare of all those that are on the receiving end of the designs of assets for construction, operation, maintenance, modification and ultimately removal or demolition.

This year's competition was modified to include teams as well as individuals. The response was magnificent with many more entries than in the previous years with many individuals and teams competing for the top prizes. The designers covered a wide spectrum of the construction industry including client organisations, consulting engineers, contractors, sub-contractors, product designers and academics.

The Lighthouse Club extends a big thank you to all those that entered the

competition. Also, thanks to Arcadis for sponsoring the gold prize and to Sambo E&C for sponsoring the silver prize.

The high quality and number of entries this year made it especially difficult for the judges to determine those that stood above the others and there were some healthy discussions amongst the judging panel as well as a more sophisticated marking scheme! It was very close between the team that won the gold and silver awards. The Lighthouse Club extends its thanks to the judges that volunteered their valuable time to shortlist and interview the winning entries.

These are:

- Robert Gordon, Arcadis & Deputy Chairman of the Lighthouse Club HK
- Iain Mowatt, Temporary Works Forum & Lambeth Associates
- Mark Divers, VSL-Intrafor
- Prasad Ekanayake, The Hong Kong Jockey Club

There was again a common theme in the winning entries – collaboration.

Collaboration within and between design teams, construction teams, clients and key stakeholders. This was the key to eliminating and mitigating the health and safety risks. After the awards and in the true spirit of fellowship in the Lighthouse Club the winners stayed on the mingle with the guests and share insights into their entries for the benefit of our construction industry.

One of the outcomes of the Safety Workshop at the Lighthouse Club's Construction Conference 'Reducing Risk in the Construction Industry' on 15th March 2018 was to publish good examples of design for safety. Therefore, the entrants to the design for safety competition will be contacted and, subject to permissions, these will be published on the Lighthouse Club HK website as a free resource for all in the industry.

The awards were presented by our distinguished guest, Ada Chung, President of the Lighthouse Club HK. The full listing of the awards are as below along with the key citations from the judges.

Gold Award (HK\$30,000) - Dragages - Bouygues Joint Venture for the "The Peanut Shaft & TBM Launching Structure"

Project: MTR Shatin to Central Link Contract 1128 – South Ventilation Building to Admiralty Tunnels

Team: Michael Cheung - Dragages-Bouygues Joint Venture with Irene Liu - MTRCL, Clayton Chan - AECOM, CK Lee - Arup, Gordon Lee - Intrafor and Andy Kwok - VSL

Judges comments: "A great example of design for safety with great collaboration and coordination amongst the many parties to the project. The team adopted a peanut shell shape for the shaft construction, which dramatically reduced the internal temporary works, reducing collision risks for raising and lowering plant and materials and reducing settlement risks for nearby structures. Other great ideas to remove safety risks included the incorporation of the cut and cover tunnel section into the permanent works, replacement of the steel bell with concrete in the permanent works and reconfiguration of the shaft staircase so it could be used in the construction stage and left in place for the permanent works. All these modifications came early in the programme demonstrating great planning in the design for safety process".

Team: William Hopkin, Leighton-Chun Wo Joint Venture with Dustin Lam - Robert Bird Group and Christian Venetz - VSL Intrafor Hong Kong



Judges comments: "This was a great submission with an innovative use of horizontal launching for the roof trusses. The roof cladding is modular, in cassettes and slotted on. All cladding, features and services were installed off-site and 85% of the work was off site in controlled factory conditions. Demolition can be undertaken by reversing the construction sequence. BIM was used for checking interfaces. The design and advance planning was exemplary with almost no changes on site. There was good collaboration with the permanent works designer to incorporate features needed for construction into the permanent works design (e.g. corbels in the roof). Consideration was also given to all-weather events and temporary storage on site. All this resulted in elimination and mitigation of significant health and safety risks, especially working at height".

Judges comments: "This alternative plenum design (with only 800mm working height above the ceiling) eliminates the risks associated with a traditional suspended slab design, adopting lightweight panels suspended from the roof slab in a lightweight frame. There was also off-site prefabrication. Finger injuries from manual handling were mitigated. There was a 98% reduction in scaffolding requirements resulting in a safer site with minimal waste. Construction was completed with no reportable accidents and the workers were happy with the alternative design. The maintenance team were involved at the design stage for O&M and guidance was provided on how to cut out and replace panels. We are told that this alternative is so good that MTRCL is now adopting this as a standard design approach. There were programme and safety benefits and therefore reduced exposure time for workers".

The following entries were cited as "Highly commended" by the judges. These were:

Vinci Construction Grands Projets led by Gilles Cahia with Emmanuel Clech, Billy Lo, Keith Lee and Clement Cacarie for their 'Adaption of horse shoe section for variable width formwork optimisation' on the 'MTR Shatin to Central Link Contract 1122 Admiralty South Overrun Tunnel' project.



The judges were impressed with their elimination of work at height risks, checks for finger traps and provision of safe working areas. The rationalization of the tunnel design's varying dimensions enabled a safe solution for the roof section formwork.

Silver Award (HK\$20,000) - Leighton-Chun Wo Joint Venture, Robert Bird Group & VSL Intrafor for the "Erection methodology at the Passenger Clearance Building"



Project: Hong Kong – Zhuhai – Macao Bridge, Hong Kong Boundary Crossing Facilities, Passenger Clearance Building

Bronze Award (HK\$10,000) - Leighton-Gammon Joint Venture & Meinhardt for the "Alternative design for the plenum"

Project: West Kowloon Terminus Station North Contract 810A

Team: John Adams – Gammon with Alex Yui - Gammon, Rachel Joshua – Gammon and John Man – Meinhardt



Lambeth Associates led by Ted Lawton – Lambeth with Michael Chak – Lambeth, Mark Robinson – Dorman Long Technology, Antony Lam – Jhong Ji, Billy Wong – BIM and Arthur Wei – Tony Gee for their ‘New machine for the safe erection of precast bridge segments: The Stroller’ on the ‘Tuen Mun - Chek Lap Kok Link Viaducts’ project.



The judges were impressed again with Ted Lawton's entry (the only person to have entered all three years of this competition and a former 1st prize winner in its inaugural year). This time he and his team has addressed the transportation issue of precast deck segments on the deck of a marine bridge under construction with a challenging geometry. Of particular note, the design includes a remote control that ‘removes man from machine’, use of legs not wheels to eliminate the risk of the machine ‘running away’, high maneuverability to deal with minor adjustments and tolerances, use of BIM to check the design before manufacture and elimination of risk associated with rail-based transporter units where safety issues arise if ‘pins’ are not put replaced. There was also good collaboration between the parties to the project.

Lambeth Associates & Mott MacDonald Hong Kong Limited led by David Mephram – Mott MacDonald with Henry Yip – Mott MacDonald, Richard Ellis – Gammon, Frankie Ho – Gammon and Colin Batchelor, Airport Authority Hong Kong for their ‘mechanised construction and associated works’ on the ‘HKA Contract P533 Midfield Concourse Works’ project.



The judges noted the client-agreed contractual arrangement that permitted the designer to provide separate teams to work for both the client and contractor to help ensure that elements of design for safety remained in place for construction. There was off site modular construction for the fixed link bridges with some services built-in. Mechanised forms removed the need for in-situ formwork and most of the associated traditional falsework resulting in a tidier and safer site. Craneage movements were reduced with larger lifts. The reduced construction time also reduced the overall safety risks to the site workers.

Sambo E&C led by Patrick Tong - Sambo with Eric Tong – Sambo for their ‘retractable handrail around the deep cement mixing rig’ on the ‘Hong Kong International Airport Three Runway System Project Contract 3203 - Deep Cement Mixing Works (Package 3)’ project.



The judges noted the design was a result of feedback from site workers to address a maintenance and cleaning issue and also had client support from the Airport Authority Hong Kong. The retractable handrail was designed to be easily operated with one hand. It is a simple practical solution with potential applications to other aspects of the construction industry.

Black & Veatch Hong Kong Limited & Drainage Services Department, HKSAR Government led by Glenn Chan – Black & Veatch with Andy Kwok – Black & Veatch, Raymond KF Seit – DSD, Dr. Oliver WK Au-Yeung, DSD for their ‘multi-pump sewerage system and dry weather flow interceptors’ on the ‘Lei Yue Mum Village Sewerage’ project.



The judges noted that, by design, the project team had eliminated the need for branch sewers by using shallower pipes (depths reduced from 10m to 2-3m below ground) with the use of pumps. This mitigated the risks associated with deep excavations. A further highlight was that due to the difficulty of access for construction vehicles, lightweight HDPE pipes were used. Also noted that a H&S plan was included in the contract.

Aurecon Hong Kong Limited led by Gavin Lau – Aurecon with Percy Chan – Aurecon for their approach to design and construction sequencing on the ‘Site formation and infrastructure works for the development of Anderson Road quarry site’ project.



The judges commented that the team's approach using lattice girders to support the excavation, steel formwork, multi-phase excavation and innovative use of GFRP in place of steel bars had significantly eliminated reduced safety risks.

Leighton Joint Venture with an entry led by Andy Lau – Leighton with other Leighton team members Ken Fan, Eric Wong and Max Chan for their re-design of the cabling truck on the ‘H2613 – Central- Wan Chai Bypass (CWB)– Tunnel Buildings, Systems and Fittings, and Works Associated with Tunnel Commissioning’ project.

The judges commented that this has the makings of a good system that could have far-reaching possibilities. The modularisation on the truck and removal of a mobile elevated working platform from the process are very worthwhile improvements.

The following entries were cited as “Commended” by the judges. These were:

Atal Degremont – China Harbour Joint Venture led by Kenneth Lau with Albert Yau for their temporary excavation and lateral support system for the treatment plant on the ‘Contract DC/2013/10 DBO San Wai STW - Phase 1’ project. The judges noted that safety was improved by design with the aid of a risk register, off-site factory fabrication, making use of the permanent works for construction and good collaboration amongst the construction and design team.



Drainage Services Department & Tsun Yip Waterworks Construction Co. Ltd led by Michael Leung - DSD, with Ken Wong – Tsun Yip Waterworks Construction for their ‘temporary excavation and lateral support design for the treatment plant’ on the ‘DC/2013/09 – Advanced Works for Shek Wu Hui Sewage Treatment Works’ project. The judges were

impressed by the use of BIM to visualize the temporary works for the site workers and to use this as a tool to eliminate and mitigate safety risks.



West Kowloon Cultural District Authority led by Jeremy Stowe, WKCD with his WKCD colleagues Max Lee, Andrew Simpson, SM Lin, Ray Lee and Steve Tsang for their ‘approach to design for safety’ for the ‘Xiqu Centre’ project. The judges were most impressed that, as a client organisation, WKCD has specified in their contracts the use of the Development Bureau’s guidance document on CDM. Other design for safety features included the implementation of DfMA principles, roof truss assembly at ground level and built-in maintenance and cleaning access routes.



Aurecon Hong Kong Limited with an entry from Thomas Wang for his work on the temporary slope as part of the ‘Advance slope works for the ‘In-situ provision of Sha Tin Water Treatment Works (South Works)’ project. The judges noted that the design was developed to minimize temporary works and ensure durability for the duration that the temporary slope would be in place.



Samsung - Hsin Chong Joint Venture led by Andy Raine – SSHCJV with Patrick Cheng - MTR, Dennis Leong - MTR, York Chan - MTR, Barry Leung – SSHCJV and Patrick Cheung – SSHCJV for their ‘Holistic design for safety solution for the EEP shaft at To Kwa Wan’ on the ‘SCL 1109 – Sung Wong Toi and To Kwa Wan Stations and Tunnels’ project. The judges cited this submission for its good practice in eliminating formwork in an adit and good client collaboration.



Chun Wo Construction & Engineering Co., Ltd. led by Daniel Ho with Lau Kam Wah, Wu Chun Wang, Tang Hin Shing and Sit Hin Shing all of Chun Wo for their development work on the ‘exo-skeletong’ as trialed on the ‘Liantang/Heung Yuen Wai Site Formation and Infrastructure Works – Contract 3’ project. The judges noted that this was a product under development and testing, which is a wearable aid to help prevent construction worker muscular injuries by providing restoring moments with the potential to reduce up to 71% of muscle usage, easing standard operations and helping to prevent fatigue issues associated with repetitive tasks.



Lighthouse Club Hong Kong One-Day Conference



On the March 15, a one-day conference entitled “Reducing Risk in Construction” was held at the Hong Kong Convention and Exhibition Centre (HKCEC). The conference’s main theme was how to reduce Cost and Time Risks through NEC and other contract mechanisms as well as improving Site Safety.

The opening address was delivered by the President of Lighthouse Club Hong Kong Branch, Ms Ada Fung, who entertained the audience with an insight into her “dreams” meaning her aspirations for the industry such as collaborative design, better living environment, streamlined workflow as well as focusing on Safety in order to strengthen risk management.

Among the many speakers was Mr John Kwong, Head of Project Cost Management Office, Works Branch, Development Bureau of the Hong Kong Legislative Council and Ms Connie Yeung, Deputy Director of Housing, Hong Kong Housing Authority (HKHA). Mr Kwong’s speech concentrated on Cost Management in Public Works while Ms Yeung spoke about HKHAs Philosophy towards Risk Management on Major Projects.

Other presentations included two from leading MTR Senior Managers,

Scott McKenzie (Advantages of Target Cost Contracts on High Risk Infrastructure Projects) and Stephen Pollock (Construction Site Health & Safety from an Employer’s Perspective), and a series of workshops in the afternoon covered case studies presented by those in the Legal profession, including a talk by Martin Downey of Homan Fenwick Willan about the principle of confidentiality in arbitration and how there could be possible improvements to balancing confidentiality and publication; a Safety Workshop with Robert Gordon, Iain Mowatt and Mark Divers and a workshop featuring the effective use of NEC/BIM and how they are being adopted by the Government, presented by Mark Woodhouse, Dr Brenda Yip and Robert Pegg.

The conference was well attended by Hong Kong Branch members and non-members alike and there were visitors from the Philippines and Malaysia.

Proceeds from the conference directly benefited the Lighthouse Club Asia Pacific Region Benevolent Trust and the Lighthouse Club Hong Kong Benevolent Fund with a total of HK\$456,941 raised.

The Club, as always, is very grateful to all sponsors, speakers and delegates.

Hong Kong Branch AGM

The 32nd Annual General Meeting of the Hong Kong Branch was held in Hong Kong on Friday, 4 May 2018.

The meeting was held in conjunction with the monthly get together of the Hong Kong Branch, which this month was at Carnegie's Bar in Wanchai.

About 50 members were present by the time the AGM got going, which was more than enough for a quorum, although many more members turned up later in the evening. One would hope that they did not arrive "late" so that they could enjoy the beer but miss the "boring" parts of the evening! [Ed – I suspect that at least some of these members knew exactly what they were doing!]

The business of the AGM was run efficiently, as usual, by the Hon Secretary of the Hong Kong Branch, Glenn Haley. All of the business was concluded within 30 minutes, so that the members could return to enjoying convivial and fraternal discussion, as well as a few cold drinks of course.

The reports received from the Chair (Cordia Yu), Treasurer (Neil Roberts) and Membership Secretary (John Battersby) showed that the affairs of the Hong Kong Branch are in good order, and that the Branch continues to operate on a healthy and robust basis. This, of course, in no small part is due to the great support that the Hong Kong Branch gets on a continuing basis for its members and sponsors and supporters.

The main item of business of the AGM was to elect the 10 elected members of the Branch Committee of the Hong Kong Branch. Under the Branch's new constitution, adopted by the Hong Kong Branch in 2017, only life members and ordinary members are eligible to be elected on to the Committee. Members who are corporate nominees are then co-opted as needed and appropriate on to the Committee. The 10 elected Committee members for 2018/2019 are as follows:-

Cordia Yu, Robert Gordon, Glenn Haley, Neil Roberts, Adam Nelson, Shannon Ho,



Janey Rogers, Giles Hall, Barry Adcock, Steve Rowlinson

The additional members who will be co-opted to serve on the Committee will include Mike Atkin (who does many of the hard yards in producing this Magazine) and Stephen Pollock (who helps out on the important work of the Safety Sub-Committee).

A big thank you to the sponsor for the evening, which for the AGM this year was Glenn Haley of Haley Ho & Partners in association with Berwin Leighton Paisner.

M
M
MOTT
MACDONALD

零, zero, nulla, nada, nichts ...

Our global team of experts can help you visualise and simulate your asset virtually to help reduce accidents when you reach site, wherever in the world that may be.

Opening opportunities with connected thinking.

Mott MacDonald
+852 2828 5757
marketing.mmhk@mottmac.com
mottmac.om



Lighthouse Charity Cup

The second annual Lighthouse Charity Cup sponsored by The Contracts Group Ltd again took place at Sandy Bay's Stanley Ho Sports Centre on 3 March 2018. It was a fine day that was perfect for fast flowing football.

The eight teams competing in this year's event were Gammon, Paul Y, BM Construction, Hip Hing, Savills, Dragages, VSL and the Hong Kong Institution of Planning Engineers.

As with the World Cup the first round of the tournament was in group format, where each of the four teams within that group played each other once.

In Group A, Paul Y and Savills soon demonstrated that they had what it took to go all the way in the tournament. Having beaten both VSL and AES HKIPE they then proceeded to draw 1 – 1 with each other to tie on seven points at the top of the group. Paul Y ultimately took top spot due to their slightly superior goal difference.

Group B was much more tightly fought with all teams registering at least one win. Dragages ended up winning the group, closely followed by BM Construction who pipped Gammon on goal difference for second place.

In the knockout phase, the 3rd and 4th placed teams from each Group faced each other in the Plate Competition whilst the 1st and 2nd from each Group battled it out to be crowned Cup champions.

In the Plate, Hip Hing and AES HKIPE progressed from the semi-finals having beaten VSL and Gammon respectively. Neil Robert's Hip Hing team took home the Plate Trophy beating a much improved AES HKIPE team 2 -0.

In the Cup Semi Final's it was no surprise that Savills and Paul Y progressed, beating the unfortunate Dragages and BM Construction to take their place in the final. Savills held off a very spirited Paul Y team to retain the trophy they won a year ago.

We would like to thank all the teams who participated in the event and look forward to hosting another Lighthouse Charity Cup next year.

Text: James Ford





Crystal Bus Tour



On a Saturday afternoon a group of Women in Construction and Lighthouse Club members attended a unique dining and sight-seeing experience on the Crystal Bus Dining Tour opting for the dim sum lunch tour option. Once we stepped inside the bus cabin, we were surrounded by over a (very bling!) 10,000 Swarovski crystals on the bus! There were crystals on every available surface including the tables and window pillars on the bus.

The bus drove by a total of about 24 attractions along the way, including sights and surrounds of Tsim Sha Tsui, Kowloon and Lantau Island on a 2.5 hour trip, with Chinese/ English audio information introducing each attraction to the guests.

The bus stopped off at Tsing Yi Island at the Lantau Link View Point where everyone climbed the Look Out to take in views and photos of the engineering marvels of Tsing Ma bridge (suspension bridge), Ting Kau bridge and Kap Shui Mun bridge (cable stay bridge).

It also drove pass the Kwai Tsing Container Terminal Port and Stonecutters Bridge amongst some well-known buildings such as Peninsula Hotel and 1881 Heritage.

Halfway during the ride, we were served with yummy selection of dim sum (Michelin star) including Sui Mai, Turnip cake, BBQ pork bun, lotus leaf sticky rice, shrimp dumpling etc.

All in all, it was a fun experience that we got to view Hong Kong from a different perspective while enjoying the dimsum within the nicely decorated and air-conditioned Crystal Bus.



Quality advice and deliverables that will make a real difference



Expert Witness
Expert opinion on complex quantum and delay issues.



Claims Support
Preparation and defence of contractual claims for extensions of time and additional payment.



Contract Advice
Independent opinions and contract reviews for risk and opportunity.



Dispute Resolution
Expert support in mediation, adjudication, arbitration, litigation and alternative dispute resolution.



ADR | Partnership

Partners in Alternative Dispute Resolution

1711 Citicorp Centre, 18 Whitfield Road, North Point, Hong Kong
t: (852) 2234 5228 f: (852) 2234 6228 e: info@adrpartnership.com

www.adrpartnership.com

To discuss your project requirements, please contact James Longbottom, Patrick O'Neill or David Longbottom on **(852) 2234 5228**

同心同步同進 共創更好未來 RIDING HIGH TOGETHER FOR A BETTER FUTURE



www.hkjc.com



香港賽馬會
The Hong Kong Jockey Club

Young Members Update Summer 2018

Lighthouse Club Hong Kong Branch Young Members Group (YMG) is pleased to announce that Giles Hall of Revery Architecture has been appointed as the Group's new Chair.

Reacting to the news of his appointment, Hall said: "As young professionals, we have the unique advantage of our natural affinity for emergent technologies. Making up more than a third of the workforce, we also have increasing power to help shape workplace cultures. Founded around collaboration and leadership, the YMG 2018/19 mission is to bring the expanding role of technology together with the immense wisdom and experience of our group's 30 year history." Membership from young members is growing at its fastest pace ever; it truly is an exciting time for the LHC YMG community.

Emergent Construction Technologies

YMG organises interesting and engaging events throughout the year such as seminars where experts from a variety of professions share their personal experiences. On 28 April the YMG organised a site visit of the Construction Innovation and Technology

Application Centre of the Construction Industry Council. Newly opened at the end of November 2017, CITAC is located next to the CIC Kowloon Bay Training Centre and occupies a 10,000 square feet venue with five exhibition areas. Participants toured CITAC's five different thematic zones, namely "Industrialisation", "Informatisation", "Intelligentisation", "Integration" and "Infinity".

Community

The YMG community is the most ideal way to make lasting interpersonal connections and nurture one's technical skill set. Professional networking has been proven to enhance the workplace dynamic; YMG is open to all individuals of 35 years and under. Join individually or with your colleagues and discover enthusiastic young construction professionals who are making a real difference in the industry. After all, the greatest reward is that YMG LHC members know they are giving something tangible back to their communities.

For further information on membership and group activities send an email to info@lighthouseclubhk.com.



We're here to help when things don't go as planned.

Contract Dispute Consultants has built an impressive track record in resolving complex construction disputes.

Call us on **852 2470 6033** to see how we can help you.

1405 Bonham Trade Centre, 50 Bonham Strand, Sheung Wan, Hong Kong
 † (852) 2470 6033 ‡ (852) 2470 6133 • info@contractdispute.com.hk



www.contractdispute.com.hk

For all your insurance needs



International Risk Solutions

Independent Lloyd's Insurance and Reinsurance Brokers



Innovation · Reliability · Service

Tel: 020 7469 1200 E-mail: info@int-rs.com
www.int-rs.com

Lighthouse Club

4th Annual Golf Day

On March 23, the Lighthouse Club Cambodia were delighted to be able to host our 4th Annual Golf Day, once again in the beautiful surroundings of the Garden City Golf Club.

Our players numbers have increased each year and we were exceptionally excited that at this year's event we were able to welcome 60 players, both local and expatriates, including those who flew in especially for the event, all of whom attended to support the Lighthouse Club and our work here in Cambodia.



In Cambodia, the Lighthouse Club has now been established for eight years and our main goal is to support Cambodian students, who due to financial constraints would not be able to continue in higher education. We currently support seven students by funding their tuition fees and providing them with laptops and living expenses. All these young people are enrolled in construction related further education courses, including degrees in Engineering and Architecture.

Currently, the Club is able to raise funds for the students through our monthly networking events and at the Annual Lighthouse Golf Days. In future, we also hope to include other fun raising sporting and social activities such as five-a-side-football. We are also grateful to the Trustees of the Lighthouse Club Asia Pacific Region Benevolent Trust who assist financially.

At this year's Annual Golf Day, aside from all our players, we were also strongly supported by a number of sponsors. Our main corporate sponsor was Knight Frank, and we also had sponsors for every hole at the event. Adding further entertainment to the day, Todd Ripple sponsored the Ripple Effect cross lake challenge, with Todd matching all donations. Carlsberg Beer also generously donated free refreshments and New York Steakhouse provided a much appreciated BBQ station.

The Prize giving and dinner that followed the event was held at the Exchange, where tournament winners Hengky Omar and Christopher Martin, were presented with their winning prizes. They were also numerous donated raffle prizes including a global return ticket business class from Qatar Airlines, a BMW Golf Bag and gifts from Jaguar cars including a mini Range Rover.

In summary, the 4th Annual Lighthouse Golf Day was a huge success with significant much needed funds raised for our students, and a great day was had by all who attended! A huge thank you to all our sponsors. We look forward to seeing you all at the next Annual Lighthouse Club Cambodia Golf Day!





2018 Safety & Health Awards Staged in KL

On 25th April 2018 Lighthouse Club KL (LHC KL) and the Master Builders Association Malaysia (MBAM) successfully organized the 7th Safety & Health Awards at the Sunway Resort Hotel & Spa in Subang Jaya. The award ceremony was held in conjunction with MBAM's Safety & Health Conference.

The objectives of the Safety & Health Awards are to promote the importance of having good practices in Safety & Health by sharing best practices of the OSH Management System and policies to protect workers from occupational hazards and risks; to reduce both incidents and accidents at work place and to further enhance productivity and efficiency at the workplace as well as to enhance a company's reputation. The Safety & Health Awards is a joint initiative between MBAM and the Lighthouse Club Kuala Lumpur, recognizing industry player achievements in safety and health in construction projects.

At the award ceremony, guest of honour Ir. Haji Omar Bin Mat Piah, Director-General of DOSH, addressed the continuing challenges the Malaysian Construction Industry is facing. The recorded fatality rate per 100,000 workers increased from 6 in 2012 to 12 in 2016. These are very worrying statistics and while improvements in health and safety are made and there are successes in projects, there is in general much more to do in Malaysia on health and safety in construction.

The Lighthouse Club continues to address the importance of Health and Safety; one proponent is that of Ian Pughley, committee member in the LHC KL, who was also a speaker at MBAM's Safety and Health conference.

This year MBAM Safety & Health Awards recipients were:

Golden Helmet Award for Leadership in Safety & Health, Dato' Ir. Paul Ha Tiing Tai

Dato' Paul Ha is the Deputy Group Managing Director for Gamuda and Director for MMC-Gamuda KVMRT (T), also known as MGKT.

MGKT is the Underground Work Package contractor for both MRT Sungai Buloh-Kajang (SBK) and Sungai Buloh-Serdang-Putrajaya



(SSP) Line. Through his guidance, MGKT places a high degree of emphasis on all aspects of safety and health associated with the underground works and in particular public safety.

Under his leadership the Project and objectives are set and aligned to or exceed the UK construction industry incident and frequency rates. On both MRT projects MGKT is performing and delivering in accordance with these rates.

KPIs have been set for each site to achieve a minimum of 60% with no 'High Risks' within the MGKT Monthly safety, health and environmental audit. Additionally, he ensures that the organization achieves 100% attainment at all levels in the MGKT Construction Skills Certification Scheme (CSCS) where this scheme develops construction industry safety and health awareness, even for their sub-contractor's workforce.

Throughout his involvement at MGKT he demonstrates and provides great visible commitment and direction and with the support of his senior management drives behaviour change based systems (BBS). A notable achievement is the adoption of the system by the foreign and local workers with measurable safety and health improvements at all sites.

In 2015 MGKT won the International Safety Awards (with distinction) from the British Safety Council.

Safety and health statistics on SBK and SSP Underground Package stand testimony to his commitment.

Dato' Paul Ha: "As the director responsible for Safety and Health at MGKT, I take my responsibility extremely seriously. The well-being and safety of my workforce is my utmost priority in all aspects of our business. Safety is driven top-down with the Management taking direct Ownership for planning, execution and monitoring."





From left to right: Leong Kien Keong, Foo Chek Lee, Christopher Fenton (representing Paul Ha), Omar Mat Piah, Mohd Hafizi Rusydin, Michael Yap, John Arkinstall, HT Ong



Safety & Health Award for Site Personnel, Mohd Hafizi Rusydin Bin Mohd Rahim

Hafizi Rusydin is working at Kajima on the AEON Nila Project and is a Certified Safety and Health Officer from NIOSH. Through his efforts and dedication to Health and Safety this project site has been awarded the NCOSH 2018 Safety Award and achieved a five-star rating in SHASSIC Assessment from CIDB.

For improvement of health, Hafizi has enhanced the already high safety standards within Kajima. Some examples are that he established a Mosquito & Larvae Task Force to eliminate any potential mosquito breeding grounds to combat dengue fever at the workplace.

Furthermore, in recognizing outstanding commitment and contribution of staff and workers to Health and Safety at the project site, he has initiated and developed a 'Monthly Safety Ambassador' program to reward deserving personnel.

For compliance with Legal and Other Requirements, he has established an internal worker's screening program at the workplace to ensure that all workers comply with the statutory requirements of government agencies like CIDB, DOSH, IMM etc. He also

participates and works closely with the authorities and government agencies to ensure that his project site is a safe and healthy workplace. The Safety and Health awards would not be possible if not for the following sponsors, which the Lighthouse Club of Kuala Lumpur wishes to extend its heartiest appreciation for their support:

- Gold Sponsors;**
 1. Freyssinet PSC
 2. Bachy Soletanche



- Silver Sponsors;**
 1. HSL Construction
 2. Infra Segi



- Bronze Sponsors;**
 1. Al-Ambia
 2. SJEE Engineering



The Lighthouse Club Kuala Lumpur and MBAM will continue to promote Safety and Health by acknowledging good practices and achievements. While the award winners become Health and Safety ambassadors for the Construction Industry, LHC KL and MBAM are committed to continue with the selection and presentation of these awards in the future.

Kuala Lumpur News

All our events are posted on Facebook: <https://www.facebook.com/LighthouseClubKL>

The Lighthouse Club of Kuala Lumpur Annual AGM was held on Thursday 3rd May 2018, where a new committee and auditors were elected.

As per 3rd May 2018 the Lighthouse Club KL has 92 members.

LHC KL next Get Together of 2018 will take place the first Thursday of the month. The next one will take place on 7th June 2018 at Havana Changkat Bukit Bintang. While the venues for our Get Togethers on as well on 5th July and 2nd August 2018 are still to be decided.

The Lighthouse Club 2018 AGM

The 2018 AGM of the Lighthouse Club of Kuala Lumpur (LHC KL) took place at the Magnificent Fish & Chips Bar in Changkat Bukit Bintang on Thursday, May 3.

There was a fantastic turnout, and the members mingled as they munched on finger food in the form of fish fingers, fried calamari rings and fries, courtesy of the bar.

The AGM was conducted by the Vice-President, Anthony Edwards. The AGM adopted the minutes of meeting of the past AGM as well as approving the President's Report and Treasurer's Report. Michael McKenzie and Michael Curthoys were appointed as Auditors for the upcoming financial year, whilst the following members were elected to serve the Committee in the 2018/2019 term:

President:	Nigel Stanley
Vice President:	Anthony Edwards
Secretary:	Bert de Munck
Assistant Secretary:	Karthini Mahendranathan
Treasurer:	Ester Halim
Committee Members:	Ian Pughsley, Niloofar Sheidaie, Tatiana Polevshchikova, Tricia Sheu

Following the election of the Committee, Isaac Sunder Rajan, on behalf of the Chartered Association of Building Engineers (CABE), presented the proceeds from a conference jointly organised by CABE and LHC KL which took place on 19th January 2018. The proceeds which amounted to RM11,099.08 were received by Roderick Noble on behalf of the LHC KL.

We believe that the new Committee, which is in the capable hands of Nigel Stanley, will continue its excellent work that has been carried out in previous years under Rod Noble.

This includes the Committee's goal of revising our Constitution to bring it up to date with the evolution of LHC KL. Broadly, the goals of the proposed amendments are to bring the Constitution in line with the purposes of the other regional Lighthouse Clubs. We are greatly indebted to Dato Bill Davidson, a well-known and respected lawyer in the construction industry for his heroic efforts in leading this venture.



Grooving Manila Style!



The heat is certainly on in Manila! To bring in the start of summer, LHCM held their 2nd Annual Summer Soiree on Saturday 21st April 2018. The pool-side event was sponsored by Asia Pacific Pension, TKHS, and HMR. Guests were entertained by expat band “NASIRA” who donated their time and played seriously good classic rock music to keep everyone dancing late into the balmy evening. A live auction, hosted by HMR, and a raffle helped to raise funds for LHCM Scholars, with equivalent of about USD1,500 raised.

Selection of scholars for the 14 scholarship places available for the 2018-2019 School Year is in full swing. Applications closed on 7th of May 2018, and 15 applicants are undergoing final assessment, prior to review by the education committee, and selection of the new scholars, which will be completed this month. The club looks forward to welcoming a new batch of young scholars.

Next event for LHCM will be a Wine and Cheese Evening which will be held on 21st June 2018, in Makati, sponsored by Gerflor, the Flooring Group. Details will be announced on our Facebook Page.




 in partnership with 

 invite you to get cool and join us for a

Summer Soiree

SATURDAY, APRIL 21, 2018
 7:00pm to 11:00pm
 City Club, Alphaland Makati

A Live Band to Rock the night!

Ticket Price : 1,900
 For Ticket Reservation email :
lighthouseclubmanila@gmail.com
 or call Mobile No. 09054089289

Sponsored by:





Macau Branch Attracting Robust Support

Lighthouse Club-Macau is now in its 13th year of existence. The Annual General Meeting for 2017/2018 was held prior to the social gathering in March which was sponsored by Top Builder Group Limited and was attended by over 120 members and guests.

The Lighthouse Club – Macau Benevolent Fund has since its establishment in 2006 provided over HK\$ 1.8 million in benevolent support to family members resulting from 53 cases involving the death or serious injury to the family breadwinner. These cases all arose from accidents on construction sites in Macau. Further information can be found on <http://lighthouseclubmacau.com/benevolence/>

The Benevolent Fund is totally reliant upon funds raised at social events and the generosity of the Lighthouse Club members and guests. Particular thanks are extended to Min Da Construction & Engineering Co. Ltd who held their annual golf day at the Orient Golf Club in Henquin on 22nd April 2018 and for a 3rd consecutive year donated MOP 250,000 to Lighthouse Club-Macau.

The social gathering for April 2018 was held on Wednesday 11th in Four Seasons – Bar Azul and was sponsored by Modern Concrete Drill Cut (Macau) Co., Ltd., this was followed on 27th April by the Lighthouse Club-Macau Annual Dinner in the Sheraton Feast Restaurant in Sands Cotai Central. Entertainment at the Annual Diner this year included Can-Can dancers from Parisian-Macau courtesy of Mr. Kamy Tabar of T Marble.





Singapore Developer Invests in Major New Marina

Text by: Chris Husted

PHUKET: The owner and operator of the ONE°15 Marina at Sentosa Cove in Singapore has bought a 60% stake in a Thai company that already has construction permits to build a \$579 million 171-berth marina with adjoining 66-room hotel on 24 rai near the Phuket Deep Sea Port at Ao Makham, on Phuket's southeast coast.

The Singapore developer, SUTL Enterprise Limited, announced yesterday (Feb 22) that the company had entered into a conditional sale and purchase agreement to acquire a 60% stake in Makham Bay Marina Co Ltd (MBM), which has its registered office in Bangkok, for S\$5.6mn (B133.5mn).

“MBM has construction permits and development rights for a proposed marina to be located at Makham Bay, Phuket, Thailand, for which it holds the land side and accompanying water area body for a 30-year leasehold period,” said the announcement.

The project's total construction cost is estimated to be S\$24.3mn (B579,296,120.80).

As part of the agreement, SUTL will be involved in the design, construction, development, operation and maintenance of an exclusive, world-class integrated marina club and its intended marina facilities.

“The integrated marina club is positioned as a nautical lifestyle resort equipped with yacht chartering for nautical sports and recreation programs, spa & wellness area and hotel room facilities to cater to both members and the general public,” said the announcement.

The project will bear the ONE°15 brand, the statement confirmed. The facilities will feature a 171-berth marina, which can accommodate super-yachts up to 200 feet and 25 hard-stand spaces with 80 dry-stack storage. The hospitality component will include 66 hotel rooms including four three-bedroom villas, a spa, a gym, a lifestyle pool, meeting rooms, banquet hall and multiple F&B outlets.

Other facilities such as boat brokers' offices, dive operators, yacht charter companies, retail shops and other nautical lifestyle related outlets are also part of the development.

“When complete, the Project will be the only integrated marina club in the southern part of Phuket, among the island's most luxurious resorts. In addition, members-only facilities will be provided as part of the overall development to service up to 2,000 members. This is in line with the Group's vision of focusing and promoting the marina and yachting tourism lifestyle,” said SUTL in the announcement.

“It is also close to popular destination such as Phi Phi Islands, which may excite many yachters and holiday makers. I believe the location coupled with the added attributes of ONE°15, which has become synonymous with high-end amenities and the warm hospitality of a world-class integrated marina brand, will serve to boost Phuket's marine industry to the next level.”

The ONE°15 Marina Sentosa Cove, Singapore was the first marina built by SUTL. The Phuket project will be the seventh marina to bear the ONE°15 brand.

Most recently, in October last year, the SUTL clinched a contract to manage a marina in Taihu Lake, Suzhou, China, under the ONE°15 brand.

In addition, SUTL has an agreement with UEM Sunrise Bhd to incorporate a joint venture company to develop a public marina, a private marina and a superyacht marina in Puteri Harbour of Iskandar Puteri in Iskandar Malaysia, Johor. All will be branded ONE°15, the company noted in its announcement.

SCL (SINGAPORE) CONSTRUCTION LAW CONFERENCE 2018

"COLLABORATION AND TECHNOLOGY IN CONSTRUCTION LAW & PRACTICE- WHERE TO NEXT ?"

Wednesday, 12 September 2018, 9.00 a.m. to 7.00 p.m.
Legends Ballroom, Hotel Fort Canning, 11 Canning Walk Singapore 178881



About this Conference

Technology is disrupting a wide range of industries, and the construction industry is no exception. This year's SCL (Singapore) Annual Conference will explore the impact of technology to date, as well as consider possible transformations that are still to come. It will discuss how forms of contracting are adapting to change through a move to more collaborative models, and - by popular demand! - include a recap of key legal developments from the past year.

This Conference will feature 4 main sessions:

- Technology in Construction Practice
- Collaborative Contracting - Aspiration, Myth or Reality?
- Updates on Developments in Construction Law in Singapore
- Use of Technology for Construction Dispute Resolution

This Conference aims to bring together legal practitioners and construction industry stalwarts from around Asia to discuss the changing face of the construction industry.

Who Should Attend

- Architects, developers, contractors, engineers, project managers, consultants, managing agents, management corporations and other professionals involved in the construction industry who deal with legal, regulatory and contractual issues
- Construction consultants
- Law, building & construction academics and students
- In-house counsel & legal officers working in the construction industry
- Lawyers

Organised by:



Lanyard Sponsor

NAVIGANT

Gold Sponsor

**driver
trett**

Silver Sponsor

LAW IN ORDER
Where work flows.

LIMITED PLACES! For more details or to register, click [HERE!](#)

For sponsorship & exhibition opportunities, please contact June Tan at secretariat@scl.org.sg

News from the Singapore Fellowship

Pinsent Masons MPillay (PMMP) were delighted to host the May drinks evening for the club at Drinks & Co on 10th May.

As per usual for the Singapore chapter, it was a great evening, well attended and enjoyed by members and guests from all facets of the construction industry. PMMP staff, Jon Howes (also our LHC President), Sean Hardy (our LHC welfare officer), Boon Tat Yeo and Joanna Seetoh were on hand to show their firm's support. As a law firm, PMMP has a particular specialty for construction and infrastructure so they take great pride in their association with the LHC charity.

The monthly drinks are always a good laugh and serve as a fantastic way for us to catch up with colleagues and friends in the industry over a beer but more importantly to serve as a reminder of our club's purpose, to assist the victims of accident or illness within the industry. In Singapore, the safety record for this industry is largely better than some of our neighbouring countries but a high number of accidents and some fatalities still occur every year so our club needs all the support we can give it in order to continue to provide the assistance to those amongst us who need it most."

8build are very pleased to have sponsored the April 2018 Singapore Get-Together in the busy social enclave of 'Club Street' located very close to the Central Business District. The venue in an old shop house on a pedestrian friendly street provided the LHC the opportunity to showcase pop up banners on the road outside of the venue which created some good awareness of the charity to passers-by. This was further helped with the overspill of members drinking outside the Bar on one of Singapore's infamous '5 foot ways'. Our guests and staff who attended had fun meeting like-minded people from our very diverse industry and had a chance to better understand how the charity operates through the LHC Committee Members who were present. We feel privileged to have supported this event and look forward to further supporting the LHC through our Asia offices in Singapore and Hong Kong. As a Main Contractor specialising in fit out construction we feel the LHC is very much aligned with what we do and we are very pleased to be able to support as Corporate Members.



Viewing your project from a different perspective...

Aspect Asia has a wealth of experience in providing specialist skills in the commercial management of projects and in the resolution of a wide range of construction disputes.



- ▲ Commercial and contractual advice
- ▲ Preparation, defence and management of claims for time and costs



- ▲ Expert Witness services
- ▲ Dispute Management



- ▲ Forensic Planning and Delay Analysis
- ▲ Commercial and Project Management
- ▲ Quantity Surveying



Contact : Nick Adams

Aspect Consulting Asia Ltd

Units A & B, 10/F, Neich Tower, 128 Gloucester Road, Wan Chai, Hong Kong

Tel: +852 2827 6068 Fax: +852 2827 6168 E-mail: info@aspectasia.com.hk

Website: www.aspectasia.com.hk

News from Oceania



Brisbane News

The Brisbane chapter has kicked off 2018 with some very well attended monthly Get Togethers. We would like to thank our recent sponsors:

- Jan: dts Builders
- Feb: Anonymous sponsor
- Apr: WHA Consulting
- May: Holding Redlich

Our May Get Together, kindly hosted by Holding Redlich was the second of our newly branded Event Evenings, with a presentation by Kirsty Smith on “The end of the project – what could possibly go wrong? 3 common issues: global claims, security and final certificates”. This went extremely well. Our feedback has been that these informational evenings are a welcome occasional change to the usual format.

If you have a specialist topic and would like to host an Event Evening, please get in touch with us at info@lighthouseclubaus.org – we’d love to hear from you!

The Brisbane committee are full steam ahead with planning for our annual ball, which will be held at Brisbane City Hall on Saturday 1st September 2018. Tickets are available now here: <https://www.trybooking.com/VVBA> and we would absolutely love to see you there! Our Ball last year was a tremendous success and we’d love your help to make it so next year, too.

Perth News

Perth continues to see good turnouts at the events. Thanks to sponsors TBH, Clifford Chance, Navigant, Law in Order and Jackson McDonald for their recent support.

April saw our Speed Networking event jointly organised with the Society of Construction Law and sponsored by Law in Order. The event was held in the Perth offices of Clifford Chance, and saw 50 people each spend time networking with one another for a maximum of 3 minutes. Judging by the noise levels it was a phenomenal success! The event’s success was down to the diverse cross-section of the community that was attracted.

The Perth Annual event is currently being planned for August – watch this space and our website for more information.

Melbourne News

Some recent moves by committee members into Melbourne have strengthened the leadership team, and the ‘re-launch’ of the Lighthouse Club in Melbourne is well on the way. Some of the events tentatively planned for the next few months include:

- A talk on the current use of BIM in the industry;
- A general talk on the construction market from a government official;
- A discussion about AI in construction; and
- A mock arbitration.

We welcome comments on our proposed events. Any expressions of interest should be sent to info@lighthouseclubaus.org

Adelaide News

After a brief hiatus due to personal issues, we’re pleased that the Adelaide chapter will soon be reopening for business. Please check our website for details, and we look forward to seeing you there.



APRBVT Funds Bangkok Schools Project

Text & Photos: Janey Rogers



For many years The Lighthouse Club Bangkok (LCB) has been involved with the provision of construction site schools in Bangkok along with its association with Father Joe Maier of the Mercy Centre and the Human Development Foundation. Raising funds for these schools has been the sole purpose of every event LCB has run, usually in the form of Golf Tournaments and, of course, by members' donations.

On a visit to Bangkok in late 2016, the, then Asia Pacific Region (APR), Committee were invited to LCB's monthly get-together and during the evening there was mention of how difficult it was to continually fund what is, almost, a never-ending beneficiary.

Fast forward to May 2018 and LCB have become the latest recipient of funds from the Asia Pacific Region Benevolent Trust (APRBVT) after deciding to become members of Lighthouse Club International (LHCI). This was after several months of communication between the previous APR, now International, Committee, LCB and the Trustees of the APRBVT. LCB, along with the Clubs in Vietnam and Cambodia, have no legal status in their respective countries so joining LHCI allows them to be "official".

With almost all of the due diligence carried out, Steve Tennant visited Bangkok in January and was taken to a couple of the schools. More recently in May, Janey Rogers visited 3 of the schools and provided "The Lighthouse" with this article and photographs:

"Construction has been booming in Bangkok. Those empty shells of projects left after the 1998

crash, which were still dotted all over the city in the early to mid-2000s, have all but disappeared. On every construction site, there are families living, sometimes in fairly reasonable conditions, with their satellite dishes perched on roofs feeding in their favourite nightly soap operas; sometimes in not so favourable and, frankly, squalid squatter camps. Mum and Dad are working all day, and their children are running amok and at risk from everything on a typical construction site. That is, until the Lighthouse Club Bangkok set up its construction schools.

The 3 schools I visited were Ekkamai 23, CES and Bangya Preak. Arriving at Ekkamai 23, I was greeted with enthusiastic "Sawadees" from the dozen or so children, whose ages ranged from 2 to 12. One teacher was charged with making sure these youngsters had enough to occupy them and from the looks of the tiny school, it seemed that there were plenty of educational toys, books etc. One or two more diligent pupils were busy with their alphabet letters and there was evidence of English lessons too. I handed out new pencils to all of the children, kindly provided by Hong Kong Chairlady, Cordia Yu. It was hard to imagine that these children couldn't leave their corrugated iron fenced "home".

The next stop was CES school. This was on a bigger camp site, which was protected by security and looked very neat and tidy. The school is a more permanent structure than that of the wooden school at Ekkamai. CES is concrete and metal with certainly more protection from the elements when the monsoon rains come pouring down. Unfortunately, on arrival, it was empty as it was lunchtime and, I was told, the children always go home for lunch.





The third school was Bangya Preak. Here, there were around 15 children, ages ranging from 3 to 16. The teacher, Khun Sutnan, actually stays on camp Monday to Friday, only going to her own home at weekends, such is her devotion to educating these children. Another round of smiling faces, polite “wais” and “Sawadees” and even a “Hello, where do you come from?” in English from one of the youngsters who, I was told, was Cambodian. The only drawback about Bangya Preak school is that there appears to be termite infestation affecting the wooden structure so the school is going to have to be demolished and rebuilt as soon as possible.

There are times in life when you want to do so much but feel so helpless. I asked if the children were ever taken on trips outside the camp, to the Zoo or other places. The answer, sadly, was no. Because some of the parents are mostly without up to date identity documentation, it’s too risky for these children to ever leave the camps. That was something very hard to comprehend.

Life is tough but there were still plenty of smiles from the children and the teachers in the schools visited.

The final stop was to the Mercy Centre and I was introduced to Father Joe who happened to be on his way out as I was coming in. To be thanked for just being present felt embarrassing and humbling when so much work is being carried out to make people’s lives better and all I was doing was turning up to take some photographs. The Mercy Centre is based in Khlong Toei and has been helping disadvantaged families for many years. The actual centre itself was built 18 years ago and its constructor, John Cook, had just passed away two days prior to my visit.

All that we do, as Lighthouse Club members far and wide, in our various lives within the construction industry means absolutely nothing if we are unable to put back something to make somebody’s life better. If you imagine your child being left to roam around a site where the hazards are too numerous to mention then these schools are a lifeline. All credit to LCB who have been supporting them for so long.

If anybody wants more information on the above, then please contact the writer at info@lighthouseclubintl.com.



One Bangkok Building for the Future

One Bangkok is a new global landmark destination – a fully-integrated district in the heart of the city. Once completed, it will be synonymous with Thailand and enhance the country’s stature on the world stage.

One Bangkok sets new standards in terms of design, quality, connectivity and sustainability to be the most prestigious corporate address in the city. A vibrant lifestyle destination, it combines hospitality, retail, art & cultural experiences, together with the city’s finest residences. One Bangkok incorporates the unique essence of Thailand and Bangkok’s rich history, combining a deep understanding of local social and cultural context with new experiences of urban living.

The development philosophy focuses on people-centric principles, environmental sustainability, and smart-city living to create a new way of urban living not yet seen in Bangkok. Designed from the ground up to be green, smart, safe, and with nearly half of the site’s footprint designated as public realm, One Bangkok will be accessible and inclusive, inspiring new forms of public participation and creativity.



Now under construction, One Bangkok invites you to imagine the future. The future begins today. The future begins here.

<http://onebangkok.com/en/About/vision>

THE ACADEMY OF EXPERTS



The Academy of Experts is a professional body for Expert Witnesses of all disciplines including Accountants, Construction Experts, Doctors, Engineers, Surveyors and many others.

As well as being a unique source of accredited Experts our training programme has helped thousands of Experts around the world to become better Expert Witnesses.

Members are vetted by our experienced panel before being accepted as an accredited member of the Academy gaining the prestigious AMAE, MAE and FAE accreditations.

EXPERT WITNESS TRAINING FOR CONSTRUCTION EXPERTS

ASIA - NOVEMBER 2018

Courses include:

- Report writing
- The role of the Expert Witness
- Undergoing cross-examination

Lighthouse Members Special Offer:
Discount Code 'LH1805'

www.academyofexperts.org/training



@tae_experts

+44 20 7430 0333
+852 3010 1269
admin@academy-experts.org



Engineering with passion

ATAL Engineering Group (ATAL), founded in 1977, is a leading electrical & mechanical (E&M) engineering group in Hong Kong, serving customers in Greater China and around the world. We provide multi-disciplinary and integrated E&M engineering and technology services from design, manufacturing, installation, operation to maintenance. We endeavor to attain total customer satisfaction through engineering excellence, professionalism and quality service.

ATAL Engineering Group

Tel: (852) 2561 8278 | info@atal.com | www.atal.com

Let's talk.

Not just an invitation, but the way we work best.

Plus 3 helps put your construction projects back on track and back on budget, across Asia. So give us a call and let's talk.



Find out more at www.plus3.com.my.
Plus 3 in Malaysia and in Hong Kong.

Malaysia
Plus Three Consultants (M) Sdn Bhd
Contact: Michael McIver
Suite B-3A-12, Block B, Plaza Mont' Kiara,
No. 2, Jalan Kiara, Mont' Kiara, 50480 Kuala Lumpur.
Tel : +6 03 6201 0996 E-mail : kl@plus3.com.my

Hong Kong
Plus Three Consultants (HK) Ltd
Contact: Stephen Tennant
Suite 901, Level 9, The Hong Kong Club Building,
3A Chater Road, Central, Hong Kong
Tel:+852 2851 2528 E-mail: hk@plus3.com.my

Lighthouse Club International Corporate Members

BKAsiaPacific




俊和發展集團
CHUN WO DEVELOPMENT HOLDINGS LIMITED

CLYDE & CO

DGA
INTERNATIONAL EXPERTS

HK > A

KING & WOOD
MALLESONS
金杜律師事務所



PMDL  ARCHITECTURE
INTERIORS
MASTERPLANNING

Willis Towers Watson 



**BE PART
OF IT**

Membership of Lighthouse Club International is available by contacting the Membership Secretary at info@lighthouseclubintl.com. Corporate memberships are available at the following levels:

Platinum

Diamond

Gold

Silver

Bronze

Benefits include:

- Corporate logo feature in "The Lighthouse" quarterly magazine
- Logo displayed at all events organized by Lighthouse Club International and local branch events where nominees are based
- Advertising discounts

Individual membership is also available.

Forthcoming Events



Thursday 5

Kuala Lumpur Branch Get-together

Friday 6

Hong Kong Branch Monthly Get-together

Friday 6

UK Summer Ball, Artillery Garden Marquee,
The Honourable Artillery
Company, London

Wednesday 11

Bangkok Members Get Together
The Clubhouse Bar & Grill, Sukhumvit Soi 23,
from 7:00 pm - 9:00 pm

Wednesday 11

Singapore Branch Monthly Get-together

Wednesday 18

Macau Branch Monthly Social
Café Deco, The Venetian Macao,
from 6:30pm

Thursday 19

Cambodia Members Monthly Get-Together

Thursday 19

Brisbane Chapter Monthly Get Together

Tuesday 24

Adelaide Chapter Monthly Get-Together

Wednesday 25

Myanmar Members Monthly Get-together

Thursday 26

Perth Chapter Monthly Get-Together

Friday 27

Bangkok Members Late Lunch
Chesa, Sukhumit Soi 20,
from 3:00pm to 5:00pm



Thursday 2

Kuala Lumpur Branch Get-together

Friday 3

Hong Kong Branch Monthly Get-together

Wednesday 8

Macau Branch Monthly Social

Thursday 16

Manila Branch Get-Together & Quiz Night

Thursday 16

Brisbane Chapter Monthly Get-together

Thursday 16

Singapore Branch Monthly Get-together

Friday 24

Bangkok Members Late Lunch

Tuesday 28

Adelaide Chapter Monthly Get-Together

Wednesday 29

Myanmar Members Monthly Get-together

Thursday 30

Perth Chapter Monthly Get-Together

Friday 31

Singapore Annual Charity Golf Day
Orchid Country Club, from 11:00am to 9.30pm





SEP

Saturday 1

Brisbane Branch Annual Ball

Thursday 6

Kuala Lumpur Branch Get-together
Havana Changkat Bukit Bintang,
from 6.30pm to 9.30pm

Friday 7

Hong Kong Branch Monthly Get-together

Wednesday 12

Macau Branch Monthly Social

Wednesday 12

Bangkok Members Get-Together
The Clubhouse Bar & Grill, Sukhumvit Soi 23,
from 7:00 pm - 9:00 pm

Thursday 13

Singapore Branch Monthly Get-together

Thursday 20

Brisbane Chapter Monthly Get-together

Thursday 20

Singapore Branch Monthly Get-together

Friday 21

Manila Branch Wine & Cheese Night

Tuesday 25

Adelaide Chapter Monthly Get-together

Wednesday 26

Myanmar Members Monthly Get-together

Thursday 27

Perth Chapter Monthly Get-Together

Friday 28

Bangkok Members Late Lunch



**Follow our Facebook
for event updates
and photo sharing**

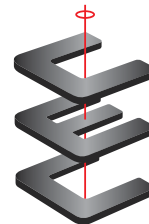




保障職安缺你不可

YOU ARE A VITAL LINK

ZERO INCIDENT



大陸工程公司
CONTINENTAL
ENGINEERING CORP

A MEMBER OF CONTINENTAL HOLDINGS

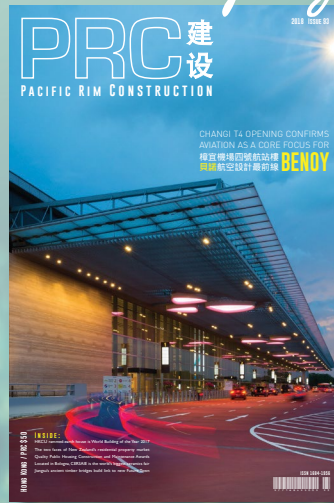
100% committed to serving the local building industry

ROF Media is the Hong Kong media group focused solely on building and construction. We create high-quality customised publications for a broad range of leading businesses. Since 2002 we have been providing effective solutions targeting high net worth individuals for our clients' tailor-made marketing materials, in print and online.

Reports



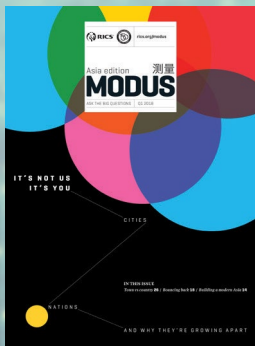
Magazines



READ THESE BOOKS ONLINE NOW!



Newsletters



Books



Catalogues



SCAN HERE

for more of our custom publishing services

ROF Media

info@rofmedia.com
www.rofmedia.com

ENGINEERED FROM THE GROUND-UP TO PERFORM BETTER



STRUTS & WALERS | BRACES & FRAMES | HYDRAULIC PROPS | EDGE PROTECTION

CE Certified Ground Shoring

Introducing Ground Shoring solutions from RMD Kwikform

Designed to meet the highest international standards

Designed to meet the highest safety requirements

Designed to improve site productivity

Our experience as one of the world's foremost providers of temporary works was the perfect foundation to distil over 200 years of expertise into the ultimate ground shoring solution.

Designed from the ground-up and developed to be better than existing options and tried and tested in the UK market, our ground shoring solutions are now available from RMD Kwikform Hong Kong.

HONG KONG
+852 2415 4882

PHILIPPINES
+632 6966735

AUSTRALIA
+61 (08) 8179 8200

NEW ZEALAND
+64 9 259 0353

www.rmdkwikform.com



Bringing
structures
to life